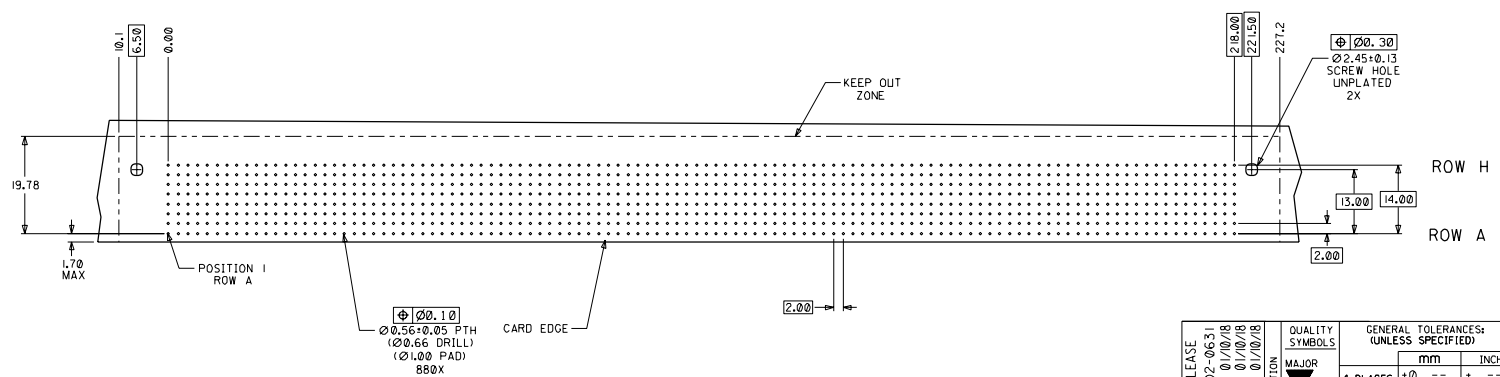
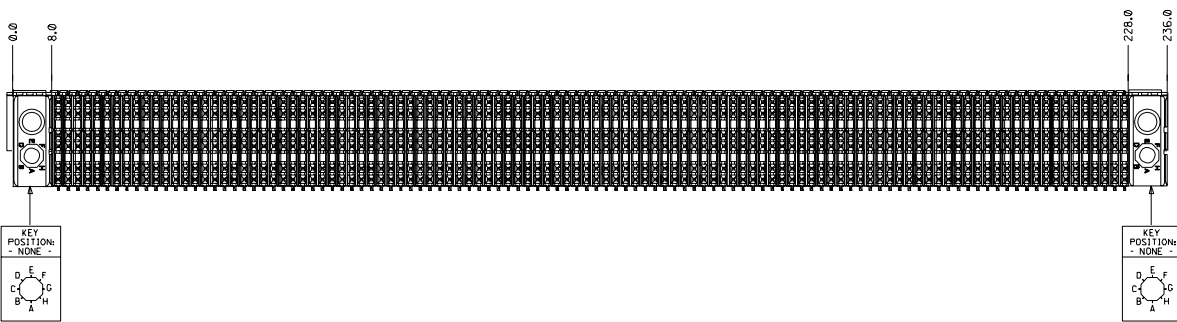


- NOTES: (UNLESS OTHERWISE SPECIFIED)
1. MATERIALS: HOUSING - LIQUID CRYSTAL POLYMER (LCP), GLASS-FILLED, UL94V-0, BLACK.
TERMINALS - HIGH PERFORMANCE COPPER ALLOY, STIFFENER - STAINLESS STEEL.
 2. FINISH: SELECTIVE GOLD (Au) IN CONTACT AREA, 0.00076mm MINIMUM THICKNESS; SELECTIVE TIN/LEAD (Sn/Pb) ON PCB TAILS, NICKEL (Ni) OVERALL.
 3. REFER TO MOLEX PRODUCT SPECIFICATION PS-74031-999 FOR PERFORMANCE SPECIFICATIONS.
 4. REFER TO MOLEX DOCUMENT SD-74681-002 FOR ADDITIONAL DETAIL ON THE HSD SIGNAL WAFER.
 5. REFER TO MOLEX DOCUMENT SD-74037-006 FOR ADDITIONAL DETAIL ON THE GUIDANCE MODULE.
 6. MOUNTING SCREWS WILL BE BAGGED WITH EACH CONNECTOR.
 7. PARTS ARE PACKAGED IN TUBES PER PK-70873-5041.



ITEM	PART NUMBER	DESCRIPTION	QTY
1	74046-0237	STIFFENER	1
2	74681-0001	HSD8 WAFER	110
3	74037-0008	POLARIZING/GUIDE MODULE	2
4	73726-0000	GUIDE MODULE MNTG SCREW	2

DAUGHTERCARD HOLE PATTERN (CONNECTOR SIDE)

INITIAL RELEASE EC NO. UDT2002-0631 DRAWN: ATP 01/10/18 CHK: LAURX 01/10/18 APPR: BIXLER 01/10/18 REV: A	QUALITY SYMBOLS MAJOR: 4 PLACES ±0, -- 2, -- CRITICAL: 3 PLACES ±0, -- 2, -- 2 PLACES ±0, -- 2, -- 1 PLACE ±0, -- 2, --	GENERAL TOLERANCES (UNLESS SPECIFIED) mm INCH ANGULAR: ± 2°	SCALE: 2:1 DESIGN UNITS: mm INCH THIRD ANGLE PROJECTION DRAWN BY & DATE: ATP 01/10/19 CHECKED BY & DATE: LAURX 01/10/19 APPROVED BY & DATE: BIXLER 01/10/19 CAD FILENAME: SD-74680-089 MATERIAL NO.: 74680-0089 DRAWING NO.: SD-74680-089 SHEET NO.: 1 OF 1	DIMENSIONS: mm INCH mm ONLY SHT: 1 REV: 1 REVISION ON CAD ONLY
	TITLE: 8 ROW HSD DAUGHTERCARD ASSEMBLY SALES DRAWING			MOLEX INCORPORATED
	DRAFT WHERE APPLICABLE MUST REMAIN WITHIN DIMENSIONS THIS DRAWING CONTAINS INFORMATION THAT IS PROPRIETARY TO MOLEX INCORPORATED AND SHOULD NOT BE USED WITHOUT WRITTEN PERMISSION.			
	BOARD DGN REV A 96/06/12 LEVEL 6			