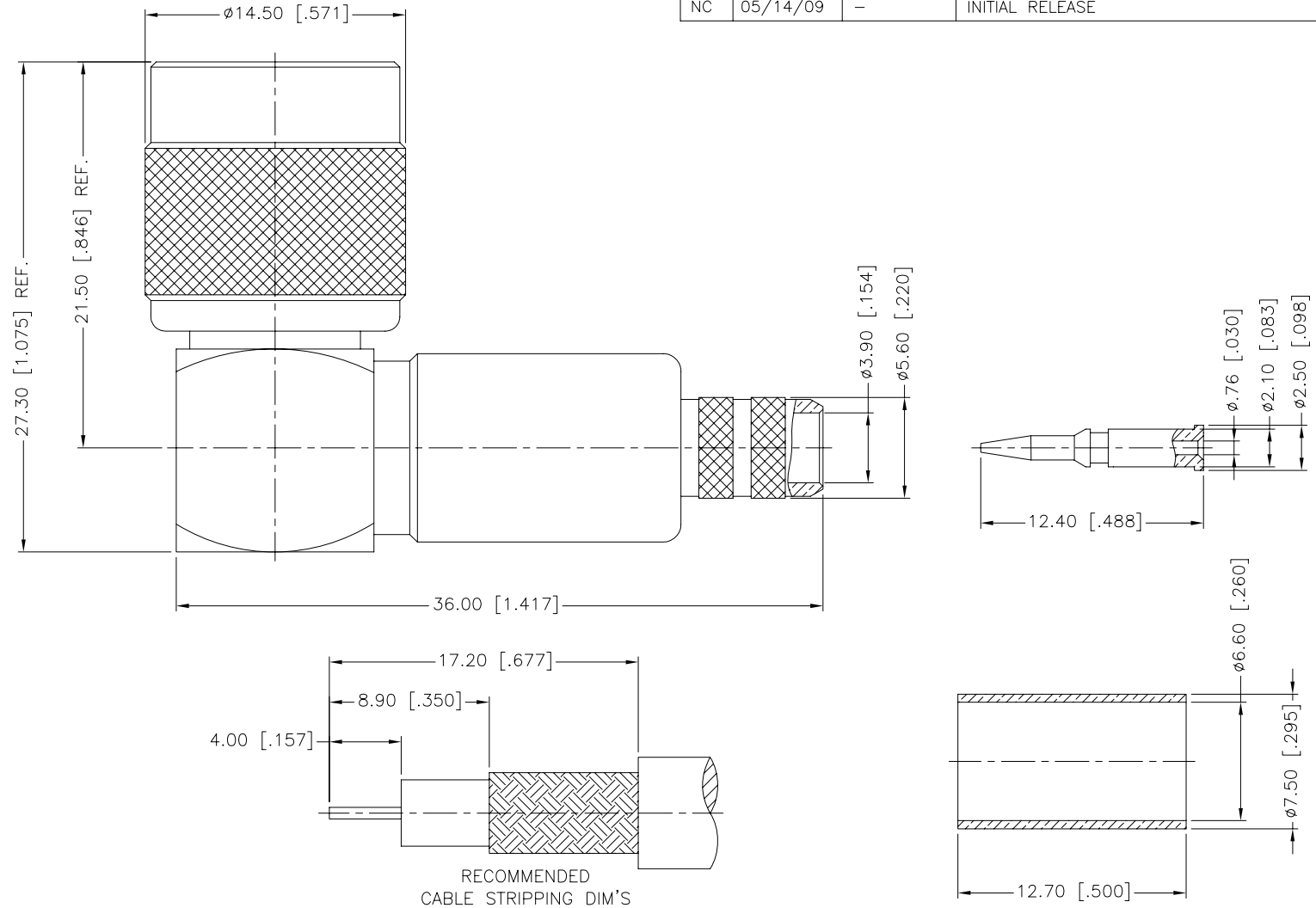


REV.	DATE	ECR NO.	DESCRIPTION
NC	05/14/09	-	INITIAL RELEASE



NOTE:
 1. CRIMPED FERRULE
 HEX CRIMP SIZE .255"
 2. CRIMPED CONTACT PIN
 HEX CRIMP SIZE .068"

14	FERRULE	BRASS	NICKEL	1
13	CONTACT PIN	BRASS	GOLD	1
12	COVER	BRASS	NICKEL	1
11	CONTACT PIN	BRASS	GOLD	1
10	WASHER	BRASS	NICKEL	1
9	RING	DELTRIN	NATURAL	1
8	RETAINER RING	BRASS	NICKEL	1
7	GASKET	RUBBER	RED	1
6	INSULATOR	DELTRIN	NATURAL	1
5	BARREL	BRASS	NICKEL	1
4	CONTACT PIN	PHOSPHOR BRONZE	GOLD	1
3	INSULATOR	DELTRIN	NATURAL	1
2	HOUSING WITH BODY	BRASS	NICKEL	1
1	SHELL	BRASS	NICKEL	1
	DESCRIPTION	MATERIAL	FINISH	QTY

UNLESS OTHERWISE SPECIFIED DIMENSIONS ARE IN MILLIMETERS. DIMENSIONS IN [] ARE IN INCHES AND FOR CUSTOMER REFERENCE ONLY.

UNLESS OTHERWISE SPECIFIED TOLERANCES FOR MILLIMETERS ARE:
 0.5 - 8mm ± 0.20 mm
 8 - 30mm ± 0.40 mm
 30 - 120mm ± 0.50 mm

UNLESS OTHERWISE SPECIFIED TOLERANCES FOR INCHES ARE:
 .020 - .315 = ± 0.007 "
 .315 - 1.180 = ± 0.015 "
 1.180 - 4.724 = ± 0.020 "

DO NOT SCALE DRAWING

APPROVALS	DATE
DRAWN J.CHENG	05/14/09
CHECKED	
ISSUED	
SHEET 1 OF 1	
CAD FILE	C:/CONNEX/122153.DWG

Amphenol Connex			
PART DESCRIPTION			
TNC R/A CRIMP PLUG (FOR RG-59/U CABLE)			
PART NO.			
122153			
DWG. NO.	122153.DWG	REV.	NC
SIZE	A	SCALE	NA