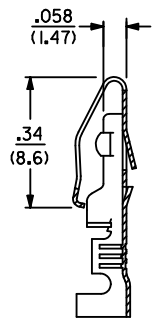
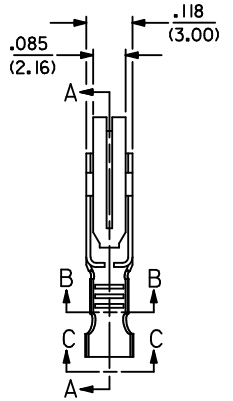


NOTES

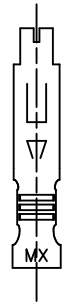
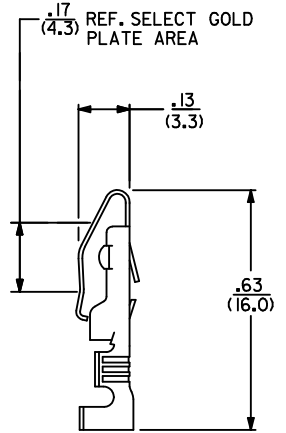
- 1) MATERIAL: BRASS, ALLOY 260, .010/(0.25) THICK.
- 2) FINISH:
 - P555: .000015/(0.00038) MIN. SELECT GOLD OVER .000030/(0.00076) MIN. NICKEL OVERALL.
 - P909: .000100/(0.00254) MIN. HOT TIN DIP.
 - P607: .000050/(0.00127) MIN. SELECT GOLD OVER .000050/(0.00127) MIN. NICKEL OVERALL.
 - P228: .000030/(0.00076) MIN. SELECT GOLD ON CONTACT AREA, .000100/(0.00254) MIN. SELECT MATTE TIN, BOTH OVER .000050/(0.00127) MIN. NICKEL OVERALL.
- 3) PRODUCT SPECIFICATION PS-09-50 APPLIES.
- 4) TERMINAL FOR USE WITH 18-24 AWG WIRE.
- 5) THIS PART CONFORMS TO CLASS B REQUIREMENTS OF COSMETIC SPEC. PS-45499-002 .



SECTION A-A

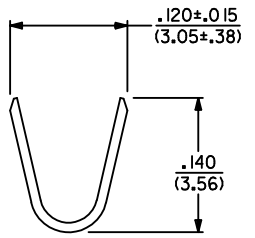


SECTION B-B

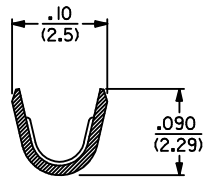


LEGEND

4366-***
 PLATING (SEE NOTE 2) ——— FORM
 ——— BLANK=CHAIN
 ——— L=LOOSE



VIEW C-C



2	D
1	D
SHT.	REV.

CORRECT PLATING EC NO: UCP2012-1821 DRWN: MSTROH 2012/01/04 CHKD: HKIPPER 2012/01/05 APPR: FSMITH 2012/02/02	QUALITY SYMBOLS	GENERAL TOLERANCES (UNLESS SPECIFIED)	DIMENSION STYLE	SCALE	DESIGN UNITS	THIRD ANGLE PROJECTION
	▽=0	mm INCH	IN/MM	4:1	INCH	TERMINAL CRIMP ON
	▽=0	4 PLACES ± --- ± ---	DRAWN BY DATE	ROBERTS 1991/08/15	MATERIAL NO. SEE CHART	
	▽=0	3 PLACES ± --- ± .010	CHECKED BY DATE	PATEL 1991/08/15	DOCUMENT NO. SD-4366	
	2 PLACES ± 0.25 ± .014	APPROVED BY DATE	LENZ 1991/08/15	SHEET NO. 1 OF 2		
	1 PLACE ± 0.35 ± ---	ANGULAR ± 1/2°	THIS DRAWING CONTAINS INFORMATION THAT IS PROPRIETARY TO MOLEX INCORPORATED AND SHOULD NOT BE USED WITHOUT WRITTEN PERMISSION			
		DRAFT WHERE APPLICABLE MUST REMAIN WITHIN DIMENSIONS				

PART NO.	ENG. NO	REF.	PART NO.	ENG. NO		PART NO.	ENG. NO		PART NO.	ENG. NO
08-03-0304	4366-P909L									
08-03-0303	4366-P909									
08-05-0302	4366-P555L	ES-150-*								
08-05-0301	4366-P555	ES-150-*								
08-05-0305	4366-P607	ES-150-*								
50-36-1873	4366-P228	ES-150-*								

COLUMN NO. 1 CON'T. IN COLUMN NO. SHEET NO. COLUMN NO. 2 CON'T. IN COLUMN NO. SHEET NO. COLUMN NO. 3 CON'T. IN COLUMN NO. SHEET NO. COLUMN NO. 4 CON'T. IN COLUMN NO. SHEET NO.

CORRECT PLATING EC NO: UCP2012-1821 DRWN:MMSTROH 2012/01/04 CHKD:HKIPPER 2012/01/05 APPR:FSMLTH 2012/02/02	DESCRIPTION REV	QUALITY SYMBOLS	GENERAL TOLERANCES (UNLESS SPECIFIED)	DIMENSION STYLE	SCALE	DESIGN UNITS	THIRD ANGLE PROJECTION
		▽=0 ▽=0 ▽=0	4 PLACES ± --- ± --- 3 PLACES ± --- ± --- 2 PLACES ± --- ± --- 1 PLACE ± --- ± ---	IN/MM	---	INCH	TITLE TERMINAL CRIMP ON
		ANGULAR ±1/2°	DRAWN BY ROBERTS DATE 1991/08/28 CHECKED BY PATEL DATE 1991/08/28 APPROVED BY LENZ DATE 1991/08/28	MATERIAL NO. SEE CHART	MOLEX INCORPORATED DOCUMENT NO. SD-4366	SHEET NO. 2 OF 2	
		DRAFT WHERE APPLICABLE MUST REMAIN WITHIN DIMENSIONS	THIS DRAWING CONTAINS INFORMATION THAT IS PROPRIETARY TO MOLEX INCORPORATED AND SHOULD NOT BE USED WITHOUT WRITTEN PERMISSION				