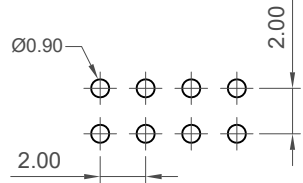
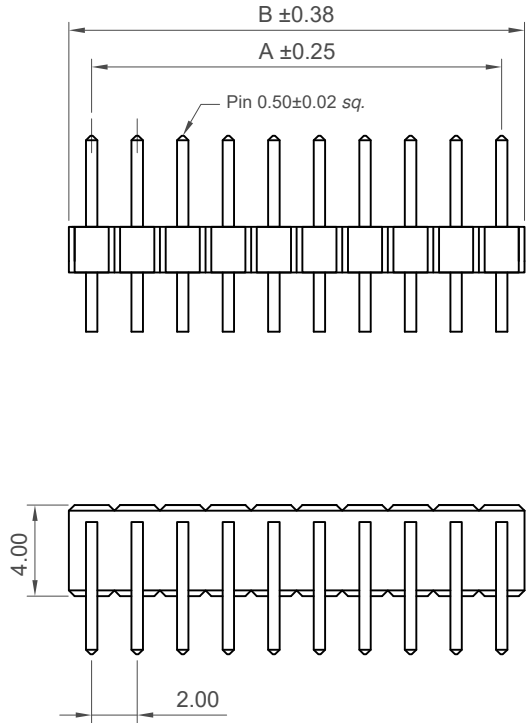
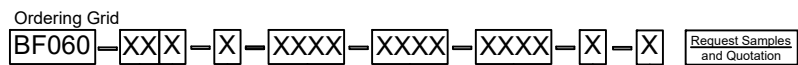
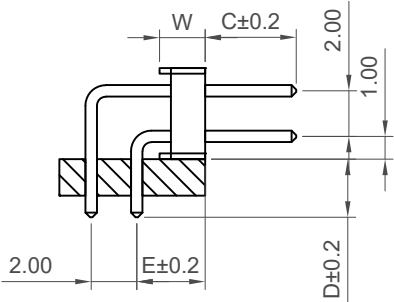
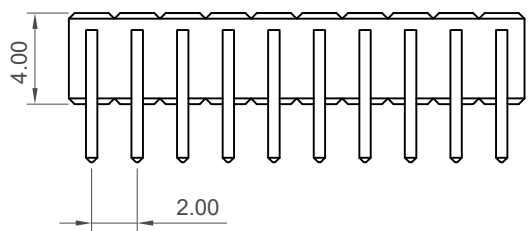


H  
G  
F  
E  
D  
C  
B  
A



Recommended PCB Layout



Ordering Grid  
BF060-XX-X-XXXX-XXXX-XXXX-X-X

No. of Contacts  
04 to 80

Packing Options

- G = Plastic Box (Standard)
- B = Tape & Reel with Cap (08 to 80 contacts)
- C = Tape & Reel with Film
- D = Tube (08 to 80 contacts)
- E = Tube with Cap (08 to 80 contacts)

Insulator Material

- N = Nylon 6T (Standard)
- L = LCP
- P = PBT

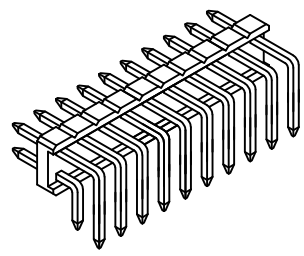
Dimension E (1/100mm)  
(Centre of Pin to Top of Insulator)  
**0305 = 3.05mm (Standard)**  
(Minimum 0175 = 1.75mm for Insulator width 1.5mm)  
(Minimum 0225 = 2.25mm for Insulator width 2.0mm)  
Or specify Custom Stack Height  
eg 0250 = 2.50mm  
(Maximum 0600 = 6.00mm)

Dimension D (1/100mm) (Tail Length)  
**0280 = 2.80mm (Standard)**  
Or specify Custom Tail Length  
eg 0250 = 2.50mm  
(Maximum 0600 = 6.00mm)  
(Minimum 0100 = 1.00mm)

Contact Plating  
**A = Gold Flash All Over (Standard)**  
B = Selective Gold Flash Contact Area/  
Tin On Tail  
C = Tin All Over  
G = 10µ" Gold Contact Area/Tin On Tail  
I = 30µ" Gold Contact Area/Tin On Tail

Dimension W (1/100mm) (Insulator Width)  
**B = 2.00mm (Standard)**  
A = 1.5mm

Dimension C (1/100mm) (Post Length)  
**0400 = 4.00mm (Standard)**  
Or specify Custom Post Length  
eg 0250 = 2.50mm  
(Maximum 1000 = 10.00mm)  
(Minimum 0100 = 1.00mm)



Specifications

Material  
Contact: Copper Alloy  
Insulator:  
Standard: Polyamide, Nylon 6T, UL 94-V0  
Options: Polymer, LCP, UL 94-V0  
Options: Polyester, PBT, UL 94-V0

Plating  
See Ordering Grid

Electrical  
Current Rating: 2 Amp Per Pin  
Insulation Resistance: 1000 MΩ min  
Contact Resistance: 20 mΩ max.  
Dielectric Withstand Voltage: AC 500 V

Mechanical & Environmental  
Operating Temperature: -40°C to +105°C

Soldering Process:  
Nylon 6T (Standard) -  
IR Reflow: 260°C for 10 sec.  
Wave: 230°C for 5-10 sec  
Manual Solder: 350°C for 3-5 sec  
LCP (Option) -  
IR Reflow: 260°C for 10 sec.  
Wave: 250°C for 5-10 sec  
Manual Solder: 350°C for 3-5 sec  
PBT (Option) -  
Manual Solder: 330°C for 3-5 sec  
(Not Suitable for High Temperature Process)

Mates with (Subject to pin length)  
BF065 BF080 BF095 BF100  
BF115 BF120 BF185  
Perfect Planar Mating with  
BF110 BF112

No. of Contacts	Dimensions	
	A	B
4	2.0	4.0
6	4.0	6.0
8	6.0	8.0
10	8.0	10.0
12	10.0	12.0
14	12.0	14.0
16	14.0	16.0
18	16.0	18.0
20	18.0	20.0
22	20.0	22.0
24	22.0	24.0
26	24.0	26.0
28	26.0	28.0
30	28.0	30.0
32	30.0	32.0
34	32.0	34.0
36	34.0	36.0
38	36.0	38.0
40	38.0	40.0
42	40.0	42.0
44	42.0	44.0
46	44.0	46.0
48	46.0	48.0
50	48.0	50.0
52	50.0	52.0
54	52.0	54.0
56	54.0	56.0
58	56.0	58.0
60	58.0	60.0
62	60.0	62.0
64	62.0	64.0
66	64.0	66.0
68	66.0	68.0
70	68.0	70.0
72	70.0	72.0
74	72.0	74.0
76	74.0	76.0
78	76.0	78.0
80	78.0	80.0

Part Number BF060		Product Description 2.00mm Pitch Pin Header, Dual Row, Through Hole, Horizontal	
Drawing Date 31st October 2007			
By CC		Tolerances (Except as Noted)	Units: Metric (mm)
Detail BF060 F PCN		Length X. ± 0.30 XX ± 0.20 XXX ± 0.15 XXX ± 0.10	Angle X° ± 5° XX° ± 2° XXX° ± 1° XXX° ± 0.5°
Revision F4			3rd Angle Projection
Date 11/08/22			



This drawing is confidential and copyright of Global Connector Technology Ltd (GCT). This drawing must not be copied or disclosed without written consent. E & OE

www.gct.co

Not to Scale	Drawn By LYH	Sheet No. 1/1
--------------	-----------------	------------------