

Hexagonal locknut

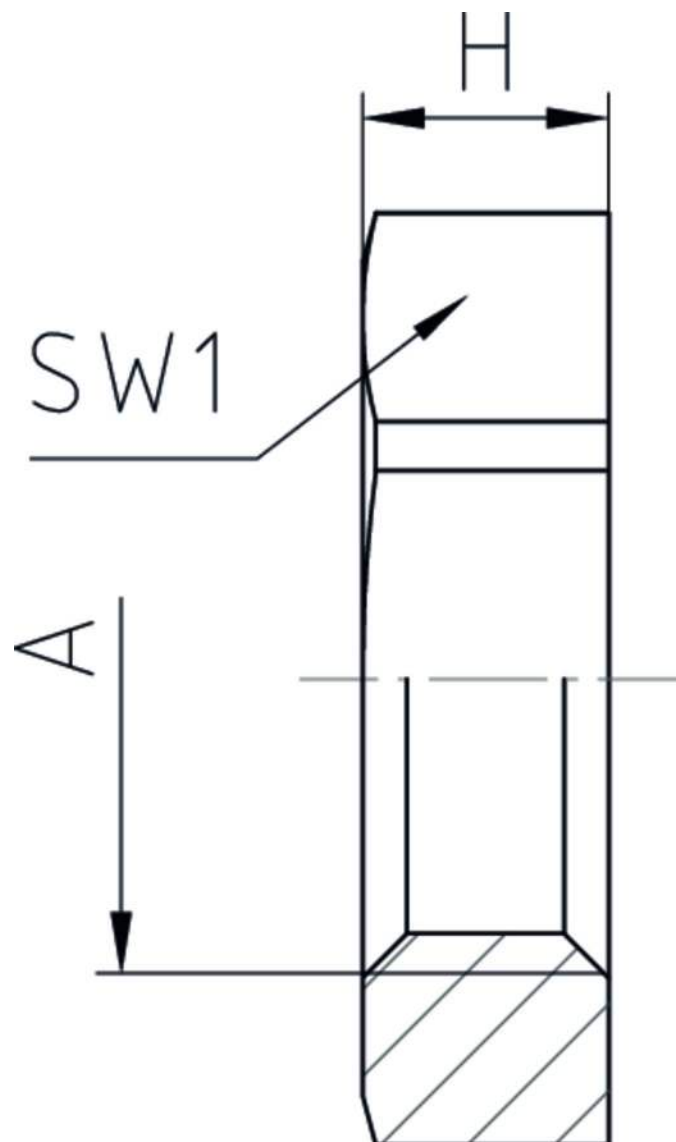
50.2xx PAzzzz

Hexagonal locknut	Polyamide PA6 GF30
Internal thread	metric, as per EN 60423




Properties

Temperature range	-40 °C +100 °C	<ul style="list-style-type: none">for secure tightening of cable glands and accessories
-------------------	-------------------	---




Features



A	SW1	H	 VPE	Part No.
M12x1,5	17	5	100	50.212 PA/SW
M16x1,5	22	5	100	50.216 PA/SW
M20x1,5	27	6	100	50.220 PA/SW
M25x1,5	32	6	100	50.225 PA/SW
M32x1,5	41	7	100	50.232 PA/SW
M40x1,5	50	7	50	50.240 PA/SW
M50x1,5	60	8	50	50.250 PA/SW
M63x1,5	75	8	50	50.263 PA/SW




RAL 7035

A	SW1	H	 VPE	Part No.
M12x1,5	17	5	100	50.212 PA7035
M16x1,5	22	5	100	50.216 PA7035
M20x1,5	27	6	100	50.220 PA7035
M25x1,5	32	6	100	50.225 PA7035
M32x1,5	41	7	100	50.232 PA7035
M40x1,5	50	7	50	50.240 PA7035
M50x1,5	60	8	50	50.250 PA7035
M63x1,5	75	8	50	50.263 PA7035



RAL 7001

A	SW1	H	 VPE	Part No.
M12x1,5	17	5	100	50.212 PA7001
M16x1,5	22	5	100	50.216 PA7001
M20x1,5	27	6	100	50.220 PA7001
M25x1,5	32	6	100	50.225 PA7001
M32x1,5	41	7	100	50.232 PA7001
M40x1,5	50	7	50	50.240 PA7001
M50x1,5	60	8	50	50.250 PA7001
M63x1,5	75	8	50	50.263 PA7001

Sizes M50x1,5 and larger without fibre glass reinforcement