

DESCRIPTION	APPROVED BY/DATE	REV
	C. Westub 8-2-90	3
ECO-09-026495	AEG / 07DEC09	4

SAFETY ORGANIZATION(S):

THIS FILTER HAS BEEN FORMALLY RECOGNIZED, CERTIFIED OR APPROVED BY THE LISTED AGENCY. THEREFORE, ALL TEST/REQUIREMENTS SPECIFIED IN THE LATEST REVISION OF THE FOLLOWING AGENCY STANDARDS HAVE BEEN MET:

UL RECOGNIZED: UL 1283
 OPERATING SPECIFICATIONS:
 LINE VOLTAGE/CURRENT: 3.0 AMP., 120/250 VAC

LINE FREQUENCY: 50-60Hz
 MAX. CASE RISE @ RATED CURRENT: 40°C
 MAX. LEAKAGE CURRENT, EACH LINE TO GROUND: .83 mA at 250V 50 Hz
 OPERATING AMBIENT TEMP. RANGE: -10°C TO +40°C @ RATED CURRENT, I_r

IN AN AMBIENT, T_a, HIGHER THAN 40°C, THE MAXIMUM OPERATING CURRENT, I_o, IS AS FOLLOWS:

$$I_o = I_r \sqrt{\frac{85 - T_a}{45}}$$

RELIABILITY SPECIFICATIONS:

STORAGE TEMPERATURE: -40°C TO +85°C
 HUMIDITY: 21 DAYS @ 40°C 95% RH
 CURRENT OVERLOAD TEST: 6 TIMES RATED CURRENT FOR 8 SECONDS

TEST SPECIFICATIONS:

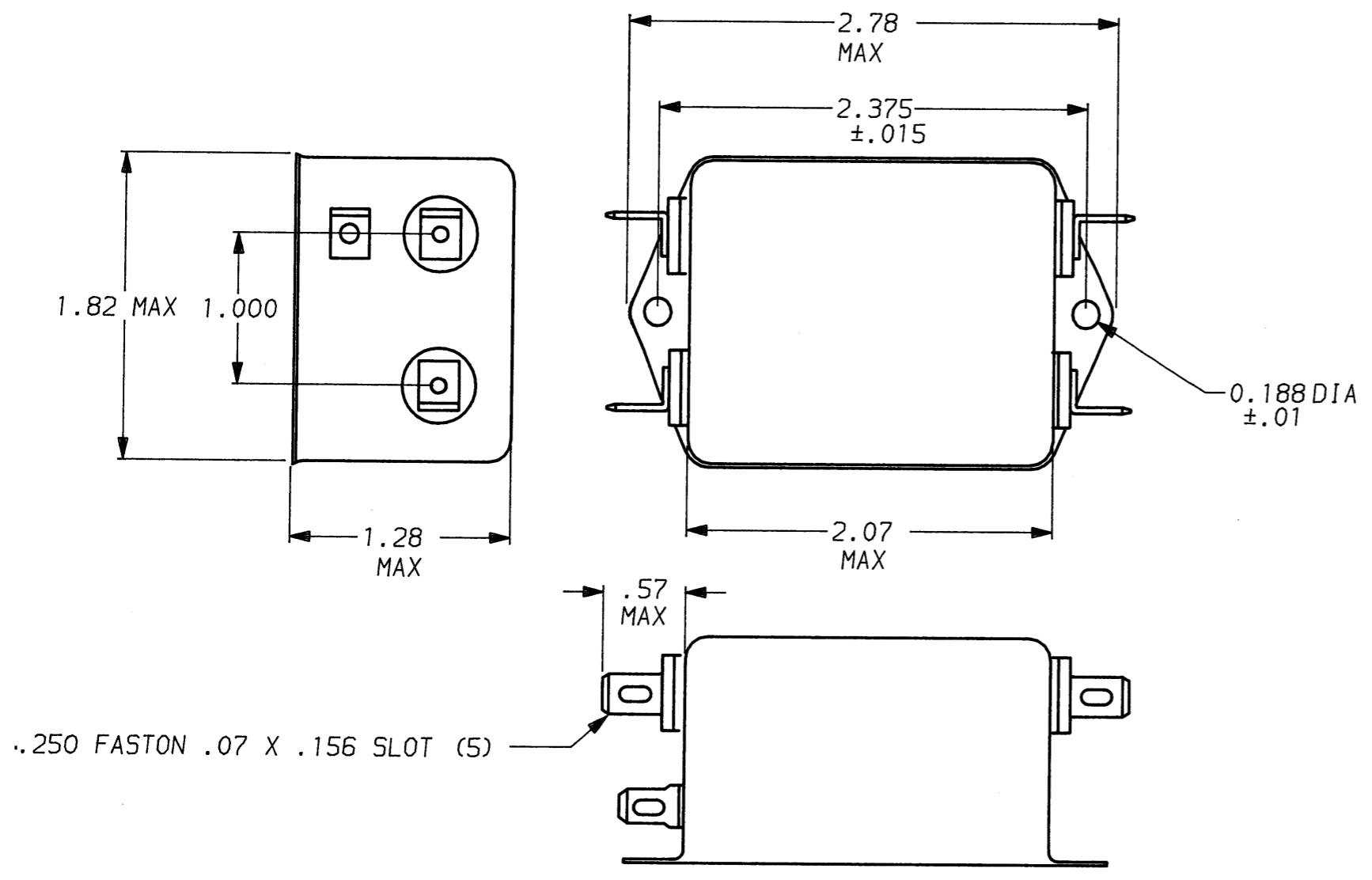
INDUCTANCE: 1.05 mH NOMINAL
 CAPACITANCE: (MEASURED @ 1 KHz, 0.25 VAC MAX., 25°C ±1°C)
 LINE TO GROUND: .011µF ±20%
 LINE TO LINE: .813µF ±20%
 DISCHARGE RESISTOR: 330 KΩ
 LINE/GROUND AND LINE/LINE: 6000 MΩ (MIN) AT 100 VDC
 INSULATION RESISTANCE (W/O DISCHARGE RESISTOR): 20°C AND 50% RH

RECOMMENDED RECEIVING INSPECTION HIPOT:

LINES TO GROUND: 2250 VDC FOR 1 MINUTE
 LINE TO LINE: 1450 VDC FOR 1 MINUTE

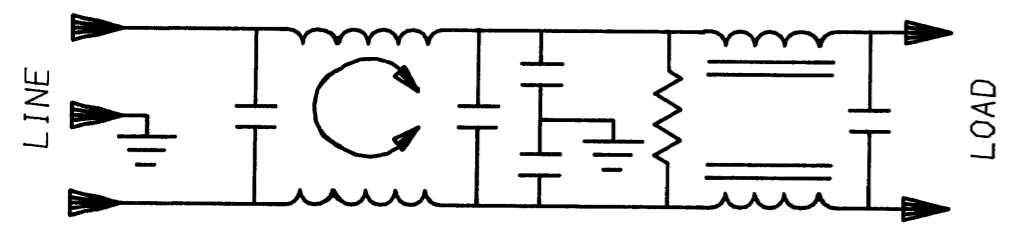
FILTER APPROVAL:

THE BEST WAY TO SELECT AND QUALIFY A FILTER IS FOR YOUR ENGINEERING TO TEST THE UNIT IN YOUR EQUIPMENT.



⚠️ OBSOLETE PARTS: OBSOLETE CIS STREAMLINING PER D.RENAUD/D.SINISI

6609040-1
 1609040-1 OBSOLETE ⚠️



50Ω - 50Ω (MINIMUM) INSERTION LOSS										
FREQUENCY MHz	.15	.2	.5	1	2	5	10	20	30	
COMMON dB	15	18	30	43	55	65	65	65	65	
DIFF. dB	25	35	65	65	65	60	55	52	50	

This document is proprietary to CORCOM INC. and is not to be reproduced nor used for manufacturing purposes except on CORCOM's order or prior written consent.

TOLERANCE EXCEPT AS NOTED
 DECIMAL: .XXX .XX .X ANGLES ± 1°
 ENGLISH: ±.025
 METRIC: ± —
 MATERIAL: AS SUPPLIED
 FINISH: AS SUPPLIED



POWER LINE FILTER

SCALE: NTS	DATE: 7-31-90	DRG. NO.:	REV.:
DRW. BY: CFW	ORIGINATOR: CFW	3V1A.04	