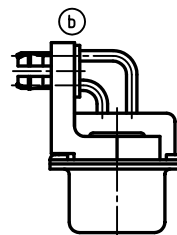
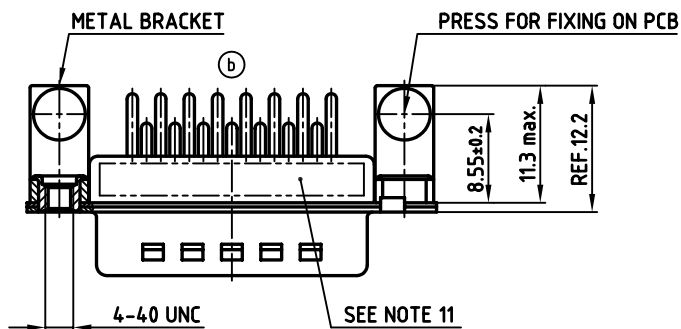
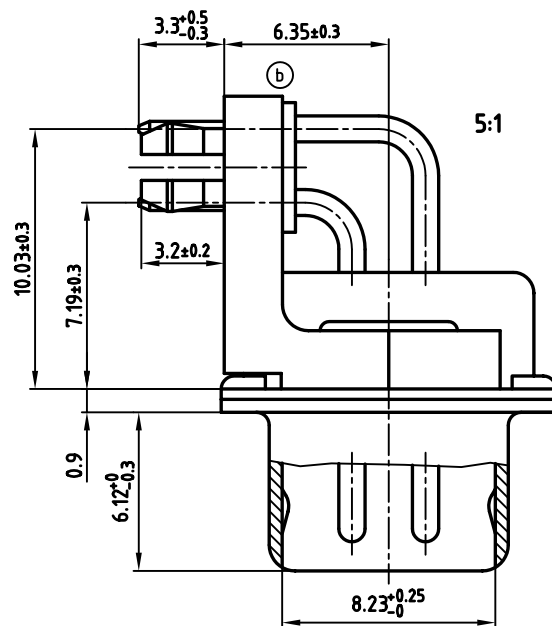
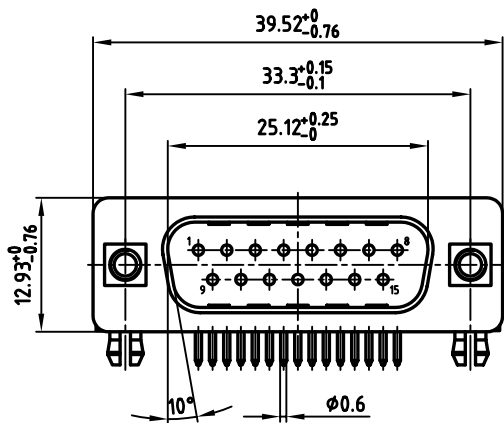
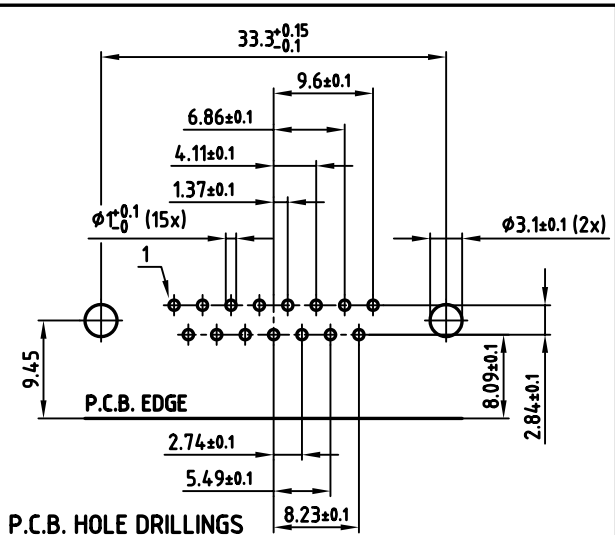


used for: D-SUB FILTER



Directive 2002/95/EC
RoHS
Compliant



NOTES:

1. METALSHELLS: STEEL; min. 315µm TIN over 40-80µm NICKEL
2. INSULATORS: PBT GF UL 94 V-0, BLACK
3. CONTACTS: COPPER ALLOY
PLATING: 8µm HARD GOLD OVER min. 50µm NICKEL
4. METAL BRACKET: ZINC DIE CAST; 300µm COPPER/40-120µm NICKEL/120-200µm TIN
5. THREADED INSERT: COPPER ALLOY; min. 200µm TIN over 80µm NICKEL
6. PCB-SNAP: COPPER ALLOY; min. 200µm TIN over 80µm NICKEL
PCB-HOLE: Ø3.1±0.1; PCB THICKNESS 1.6mm
7. P.C.B. HOLE DRILLINGS ON SHEET 2
8. CAPACITANCE: CONTACTS 1-6, 8, 9, 11-13 = 180pF ±20%
CONTACTS 7, 10, 14, 15 = ≤ 20pF
9. DIELECTRIC WITHSTANDING VOLTAGE: 424 VDC
10. MAXIMUM TORQUE VALUE FOR THREAD: 6 in.LB
11. CONNECTOR IS PART MARKED: FDC2XPTAM39S181A CONEC ABC

APPROVAL # FREIGABE # DEBLOCAGE # AUTORIZACION # APPROVAL

CUSTOMER APPROVAL DATE:

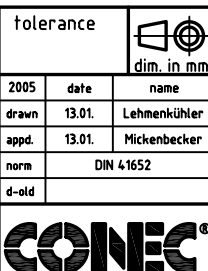
NAME: TITLE:

COMPANY NAME:

APPROVAL # FREIGABE # DEBLOCAGE # AUTORIZACION # APPROVAL

THIS DRAWING MAY NOT BE COPIED OR REPRODUCED IN ANY WAY, AND MAY NOT BE PASSED ON TO A THIRD PARTY, WITHOUT WRITTEN PERMISSION. OWNERSHIP AND COPYRIGHT OF CONEC GMBH DO NOT ALTER CAD DRAWING BY HAND

Customer Specific Product			tolerance		scale: 2:1 (5:1)
			2005	date	material: SEE NOTES
			drawn	13.01.	name
			appd.	13.01.	Lehmenkühler
			norm	DIN 41652	
			d-old		
4 x b	Ä 2753	17.07.2007	Lehmen	title:	
a	Origin	D-SUB FILTER MALE 90°			
rev. description date name			15pos. 0.318inch		
			with threaded insert, metal bracket, snap		
			dwg no: AutoCAD 2006 DIN-A		
			24K1A592 3		
			part no: FDC2XPTAM39S181A sh: 1/1		



scale: 2:1 (5:1)

material: SEE NOTES

title: D-SUB FILTER MALE 90°

15pos. 0.318inch

with threaded insert, metal bracket, snap

dwg no: AutoCAD 2006 DIN-A

24K1A592 3

part no: FDC2XPTAM39S181A sh: 1/1