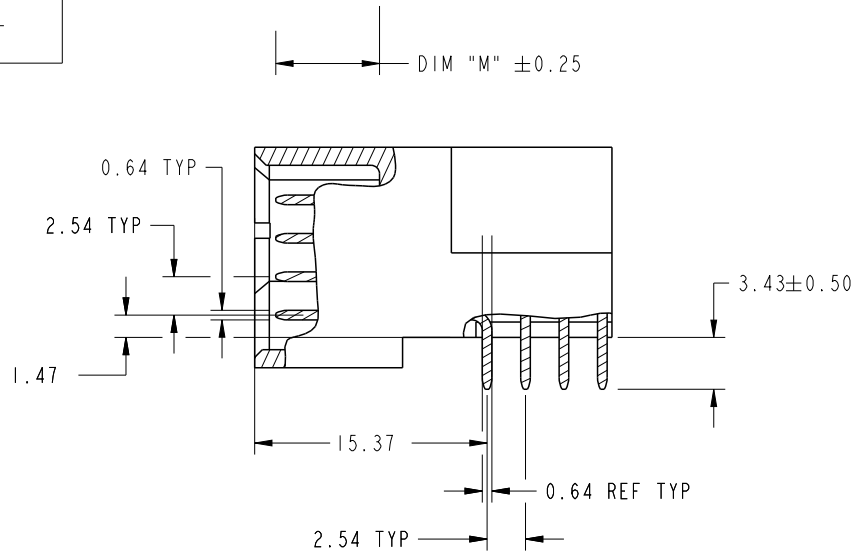


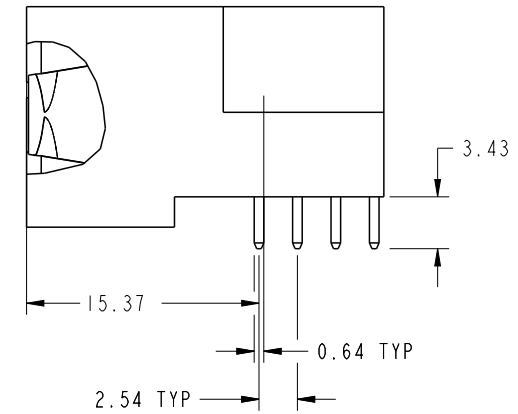
CODE	DIM "M" MATING LENGTH	CONTACT TYPE
U	[6.86]	SIGNAL
T	[6.86]	SIGNAL
S	[6.86]	SIGNAL
R	[6.86]	SIGNAL
PA	[N/A]	POWER
HA	[N/A]	HOLD-DOWN

spec ref	*	dr	Shi Guang	2012/04/24	projection	MM	size	A4	scale	1:1
tolerance std	TOLERANCES UNLESS OTHERWISE SPECIFIED	eng	Ruan MT	2016/06/01			ecn no	-		
SEE NOTE		chr	Fancy Zhang	2016/05/31				product family	PwrBlade	rel level
surface	linear	0.X	±0.5	Amphenol FCi	part no	51939-669		rev	A	
		0.XX	±0.25		description	5ACP + 24S + 5ACP				
		0.XXX	±0.1		cat. no.	-	Product - Customer Drw	sheet 1 of 4		
	angular	0°	±2°							

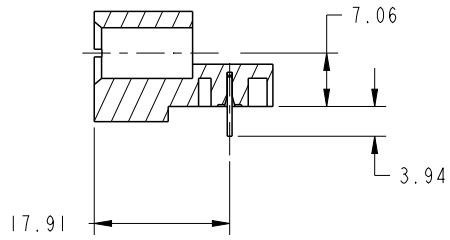
PRODUCT NUMBER  
51939-669--  
NOTE: 3



BROKEN-OUT SECTION A-A  
SCALE 2:1



BROKEN-OUT SECTION B-B  
SCALE 2:1



SECTION C-C

spec ref	*	dr	Shi Guang	2012/04/24	projection	MM	size	A4	scale	1:1
tolerance std	TOLERANCES UNLESS OTHERWISE SPECIFIED	eng	Ruan MT	2016/06/01		←→	ecn no	-	rel level	Released
SEE NOTE		chr	Fancy Zhang	2016/05/31						
		appr	Pei-Ming Zheng	2016/06/01	product family	PwrBlade				
surface	linear	0.X	±0.5	Amphenol FCi	title	5ACP + 24S + 5ACP	dwg no	51939-669	rev	A
		0.XX	±0.25							
		0.XXX	±0.1							
	angular	0°	±2°	cat. no.	-	Product - Customer Drw	sheet 2 of 4			

Creo File - REV E - 2016-02-12

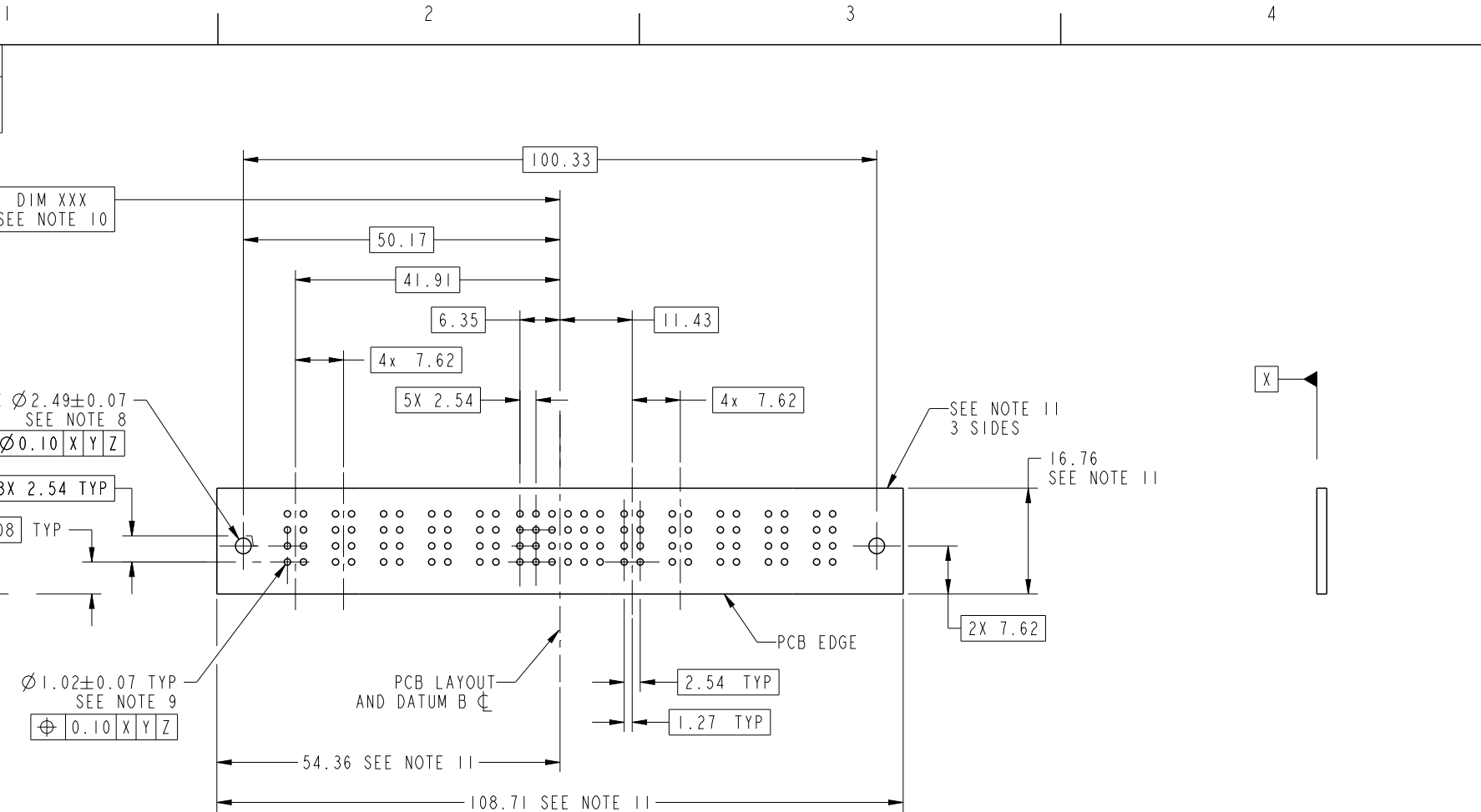
A

B

C

D

PRODUCT NUMBER  
51939-669\_  
NOTE: 3



RECOMMENDED PCB LAYOUT

spec ref	*	dr	Shi Guang	2012/04/24	projection	MM ←→	size	A4	scale	1:1													
tolerance std	TOLERANCES UNLESS OTHERWISE SPECIFIED	eng	Ruan MT	2016/06/01			ecn no	-															
SEE NOTE		chr	Fancy Zhang	2016/05/31			product family	PwrBlade	rel level	Released													
surface	<table border="1"> <tr> <td>linear</td> <td>0.X</td> <td>±0.5</td> </tr> <tr> <td></td> <td>0.XX</td> <td>±0.25</td> </tr> <tr> <td></td> <td>0.XXX</td> <td>±0.1</td> </tr> <tr> <td>angular</td> <td>0°</td> <td>±2°</td> </tr> </table>	linear	0.X	±0.5		0.XX	±0.25		0.XXX	±0.1	angular	0°	±2°	appr	Pei-Ming Zheng	2016/06/01	5ACP + 24S + 5ACP		dwg no	51939-669		rev	A
linear		0.X	±0.5																				
	0.XX	±0.25																					
	0.XXX	±0.1																					
angular	0°	±2°																					
		Amphenol FCi		RIGHT ANGLE SOLDER HEADER		cat. no.		Product - Customer Drw		sheet 3 of 4													

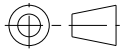
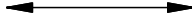

PRODUCT NUMBER  
51939-669--  
NOTE: 3

NOTES:

1. DIMENSIONS AND TOLERANCES ARE IN ACCORDANCE WITH ASME Y14.5M, 1994 UNLESS OTHERWISE SPECIFIED.

CONNECTOR NOTES:

- 2. HOUSING MATERIAL: UL 94 V-0 GLASS FILLED HIGH-TEMP THERMOPLASTIC  
POWER CONTACT MATERIAL: COPPER ALLOY  
SIGNAL PIN MATERIAL: COPPER ALLOY
  - 3. SEE ITEM 1 & 2 IN PRINT 10064183 FOR PLATING SPEC OF 51939-669 AND 51939-669LF RESPECTIVELY.
  - 4. MANUFACTURER'S NAME, DATE CODE AND OPTIONAL P/N TO APPEAR ON THIS SURFACE. THE P/N CAN BE OMITTED IF THERE IS NOT ENOUGH SPACE ON THIS SURFACE.
  - 5. PRODUCT SPECIFICATION GS-12-149.  
APPLICATION SPECIFICATION BUS-20-067.
  - 6. PACKAGED IN TRAYS.
- PCB NOTES:
- 7. ALL HOLE DIAMETERS ARE FINISHED HOLE SIZE.
  - 8. MOUNTING HOLES, WHERE APPLICABLE, ARE UNPLATED.
  - 9.  $\varnothing 1.151 \pm 0.025$  DRILLED HOLES PLATED WITH  
0.008 MIN SnPb OR Sn OVER 0.03  
TO 0.08 Cu PLATING TO ACHIEVE  
 $\varnothing 1.02 \pm 0.07$  HOLE.
  - 10. "DIM XXX" TO BE DETERMINED BY THE CUSTOMER.
  - 11. CONNECTOR KEEP-OUT ZONE.

spec ref *		dr	Shi Guang	2012/04/24	projection 	MM 	size	A4	scale	1:1
tolerance std		eng	Ruan MT	2016/06/01			ecn no	-		
SEE NOTE		chr	Fancy Zhang	2016/05/31			rel level	Released		
TOLERANCES UNLESS OTHERWISE SPECIFIED		appr	Pei-Ming Zheng	2016/06/01	product family	PwrBlade				
surface 	linear	0.X	$\pm 0.5$	Amphenol FCi	title	5ACP + 24S + 5ACP	dwg no	51939-669	rev	A
		0.XX	$\pm 0.25$							
		0.XXX	$\pm 0.1$							
angular	0°	$\pm 2^\circ$	cat. no.	-	Product - Customer Drw	sheet 4 of 4				