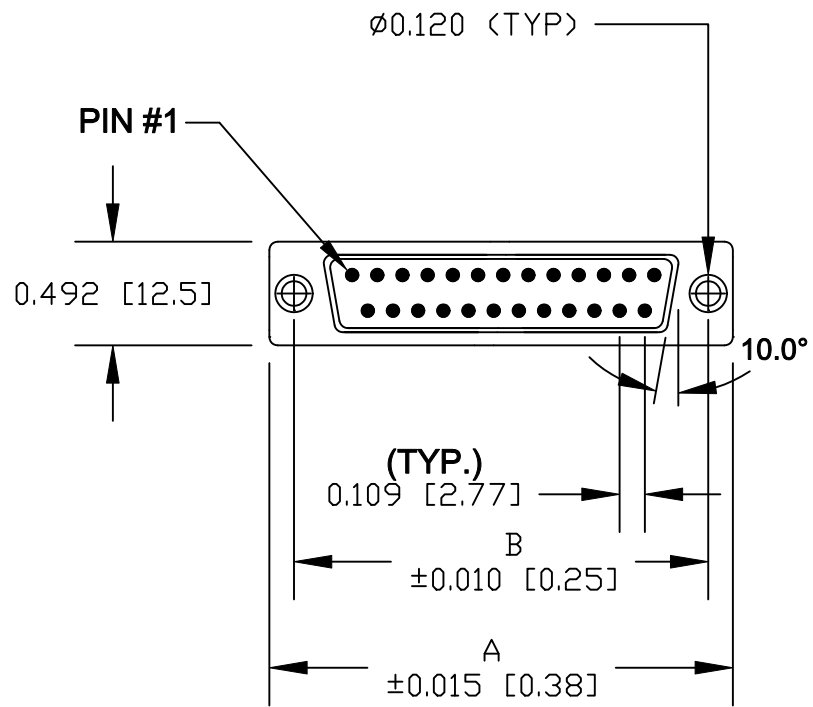
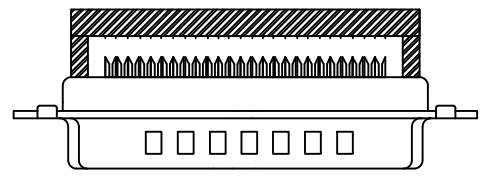
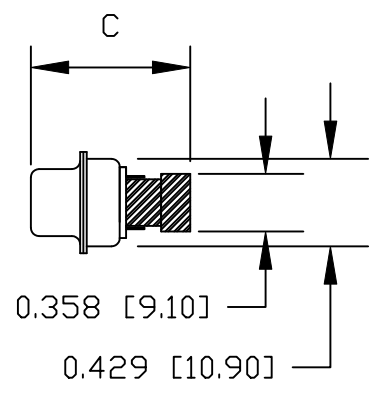


# 25 POSITION SHOWN FOR REFERENCE



### TERMINATED



	A	B	C CLOSED	C OPEN
9	1.213	0.984	0.610	0.728
	30.81	25.00	15.50	18.50
15	1.541	1.312	0.610	0.728
	39.14	33.33	15.50	18.50
25	2.087	1.852	0.610	0.728
	53.00	47.04	15.50	18.50
37	2.729	2.500	0.610	0.728
	69.32	63.50	15.50	18.50

**RoHS COMPLIANT**

### SPECIFICATIONS:

#### MATERIALS:

- SHELL: STEEL, TIN PLATED
- INSULATOR: UL 94V-0 RATED POLYESTER, GLASFILLED, BLACK
- CONTACTS: COPPER ALLOY

#### ELECTRICAL:

- CURRENT RATING: 1.5 AMP
- CONTACT RESISTANCE: 10 mOHMS MAX
- INSULTOR RESISTANCE: 5000 MOHMS MIN
- VOLTAGE: 500V AC FOR 1 MINUTE
- TEMPERATURE: -55°C TO +125°C

**184AYYY-192LYY1**

SERIES \_\_\_\_\_

POSITIONS \_\_\_\_\_

009 \_\_\_\_\_

015 \_\_\_\_\_

025 \_\_\_\_\_

037 \_\_\_\_\_

GENDER \_\_\_\_\_

1 = MALE

2 = FEMALE

TERMINATION \_\_\_\_\_

9 = IDC

SHELL PLATING \_\_\_\_\_

2 = TIN

HARDWARE OPTIONS \_\_\_\_\_

00 = NO HARDWARE

01 = .065 4-40 CLINCH NUT BOARD SIDE

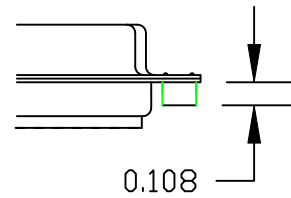
PLATING OPTIONS \_\_\_\_\_

1 = GOLD FLASH


**ACCEPTS: 28 AWG STRANDED .050" CENTER FLAT RIBBON CABLE**

	THESE DRAWINGS AND SPECIFICATIONS ARE THE PROPERTY OF NorComp AND SHALL NOT BE REPRODUCED, COPIED OR USED AS THE BASIS FOR THE MANUFACTURE OF SALE OF APPARATUS WITHOUT WRITTEN PERMISSION.		DRAWN: <b>M. SIGMON</b>	DATE: <b>04-05-11</b>
			CHECKED:	DATE:
<h1>NorComp</h1>	SCALE: 1:1	SHEET 1	OF 2	REV 1
	DWG NO. <b>184AYYY-192LYY1</b>			

CLINCH-NUTS ARE 4-40 INTERNAL THREADS



01X ..... .108" (BOARD SIDE) - CN1

	THESE DRAWINGS AND SPECIFICATIONS ARE THE PROPERTY OF NorComp AND SHALL NOT BE REPRODUCED, COPIED OR USED AS THE BASIS FOR THE MANUFACTURE OF SALE OF APPARATUS WITHOUT WRITTEN PERMISSION.		DRAWN: M. SIGMON	DATE: 04-05-11	
			CHECKED:	DATE:	
<h1>NorComp</h1>			SCALE:	SHEET 2 OF 2	REV 1
			DWG NO. 184AYYY-192LYY1		