

6

5

4

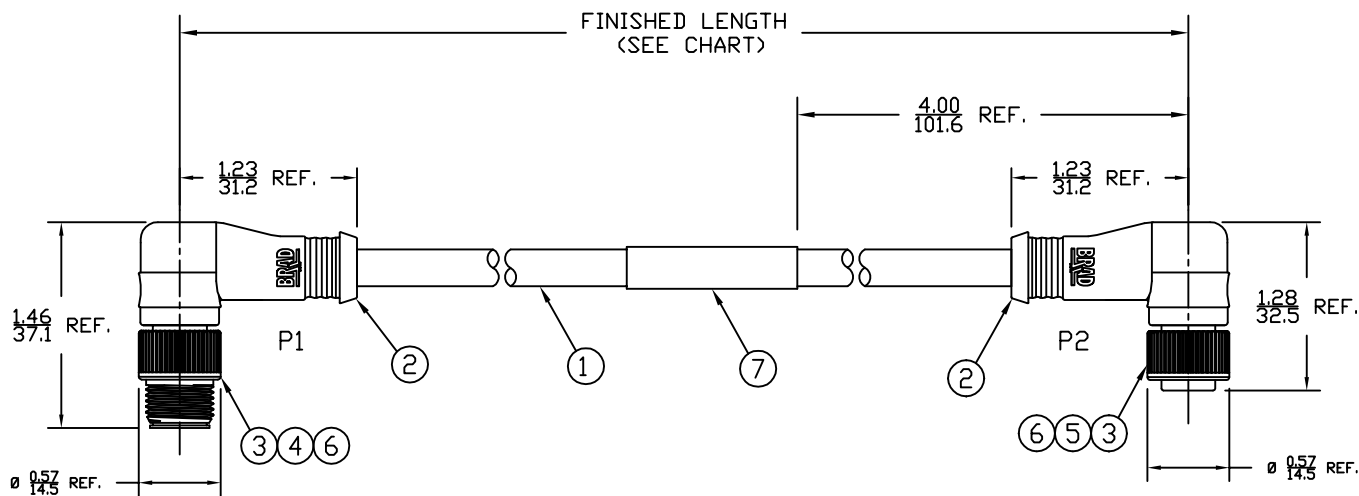
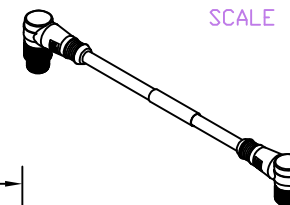
3

2

1

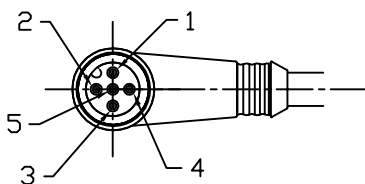
PART NUMBER	ENGINEERING NO.	LENGTH ± TOLERANCE
1300280183	DNDF33A-M010	3' 3" +2.19"/-0" [1M +55.6/-0 mm]
1300280249	DNDF33A-M030	9' 10" +3.50"/-0" [3M +88.9/-0 mm]
1300280185	DNDF33A-M050	16' 5" +6.50"/-0" [5M +165.1/-0 mm]

AUX VIEW
SCALE 1:4

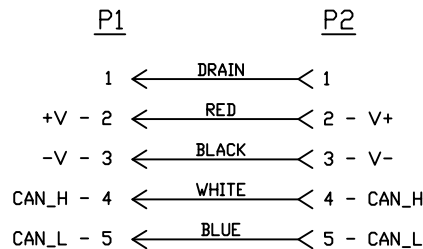


NOTES:

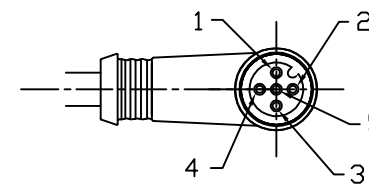
- 1) MATERIAL: SEE TABLE
- 2) FINISHES: SEE TABLE
- 3) CABLE: #22/2, 24/2 + DRAIN, DEVICENET THIN HIGH FLEX EACH PAIR: SHIELDED, TWISTED OVERALL: SHIELDED, TPE
- 4) ELECTRICAL DATA:
MAX. VOLTAGE: 250V AC/DC
MAX. CURRENT 4A
- 5) ENVIRONMENTAL:
PROTECTION IP67
TEMPERATURE RANGE: -20°C TO 80°C
- 6) WRAP LABEL IS MARKED WITH P/N, DATE CODE, VOLTAGE & AMPERAGE.
- 7) ASSEMBLY IS RoHS COMPLIANT.



MALE- FACE VIEW



SCHEMATIC



FEMALE- FACE VIEW

ITEM	QTY.	DESCRIPTION	MATERIAL	FINISH
7	1	LABEL	PLASTIC FILM	BLACK/YELLOW
6	2	INSERT	NYLON	BLACK
5	5	SOCKET CONTACT	COPPER ALLOY	GOLD PLATED
4	5	PIN CONTACT	COPPER ALLOY	GOLD PLATED
3	2	M12 COUPLING NUT	ZINC DIE-CAST	BLACK
2	2	OVERMOLD	TPE	GRAY
1	1	DEVICENET CABLE	TPE JACKET	GRAY

SD RELEASE EC NO: WNA2010-0076 DRWN: VOU CHKD: BWOODMAN APPR: JFMURPHY 2009/08/10	8/5/09	DESCRIPTION REV
	QUALITY SYMBOLS	
	▽=0	
	▽C=0	
A		

GENERAL TOLERANCES (UNLESS SPECIFIED)	
	INCH
4 PLACES	±.005
3 PLACES	±.010
2 PLACES	±.015
1 PLACE	±.020
ANGULAR ±1/2°	
DRAFT WHERE APPLICABLE MUST REMAIN WITHIN DIMENSIONS	

DIMENSION STYLE IN/MM	
DRAWN BY VOU	DATE 2009/07/30
CHECKED BY BWOODMAN	DATE 2009/07/31
APPROVED BY	DATE
MATERIAL NO. SEE CHART	
SIZE A	

SCALE 3:4	DESIGN UNITS INCH	THIRD ANGLE PROJECTION
TITLE M12 DEVICENET CABLE ASSY 5P MALE/FEM 90/90 #22/2 24/2 TPE -THIN FLX		
MOLEX INCORPORATED		
DOCUMENT NO. SD-130028-006		SHEET NO. 1 OF 1
THIS DRAWING CONTAINS INFORMATION THAT IS PROPRIETARY TO MOLEX INCORPORATED AND SHOULD NOT BE USED WITHOUT WRITTEN PERMISSION		

6

5

4

3

2

1

E

E

D

D

C

C

B

B

A

A