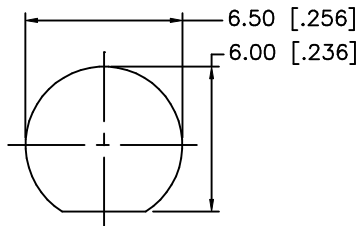
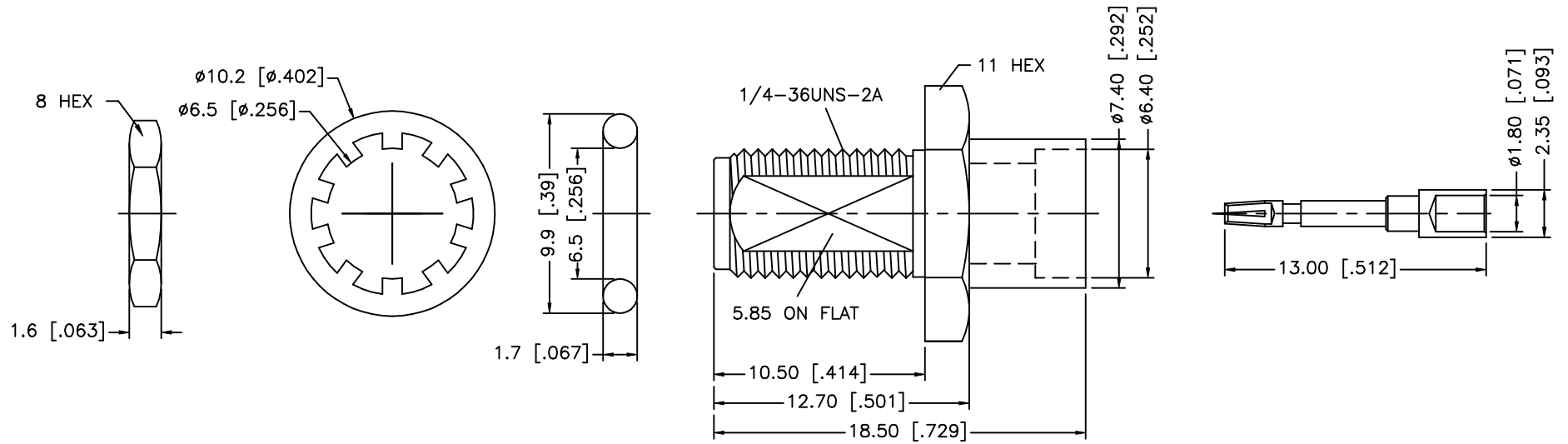
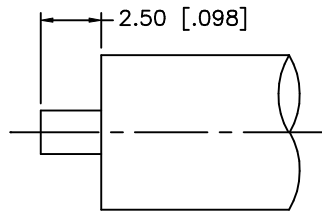


REV.	DATE	DESCRIPTION
NC	06/12/02	INITIAL RELEASE



RECOMMENDED MOUNTING HOLE



RECOMMENDED CABLE STRIPPING DIM'S

CRIMP NOTES:

1. SOLDER CENTER CONTACT
2. MAX. PANEL THICKNESS = 2.4mm

8				UNLESS OTHERWISE SPECIFIED DIMENSIONS ARE IN MILLIMETERS	APPROVALS	DATE	<h1>Amphenol - Connex</h1> <h2>CONNECTOR CORPORATION</h2> <p>TITLE: SMA DIRECT SOLDER BULKHEAD JACK (.250 SEMI RIGID CABLE)</p>					
7					DRAWN	G.R.S.					06/12/02	
6	HEX NUT	BRASS	GOLD		CHECKED							
5	LOCK WASHER	BRASS	GOLD		ISSUED							
4	GASKET	RUBBER	RED	UNLESS OTHERWISE SPECIFIED TOLERANCES FOR INCHES ARE: .XXX = ± 0.005" .XX = ± 0.010" .X = ± 0.020"			SIZE	FSCM NO.	DWG. NO.	REV.		
3	CONTACT PIN	BER. COPPER	GOLD					A	99001	132346.DWG	NC	
2	INSULATOR	TEFLON	NATURAL									
1	BODY	BRASS	GOLD									
	DESCRIPTION	MATERIAL	FINISH	DO NOT SCALE DRAWING			SCALE	NA	PART NO.	132346	SHEET	1 OF 1