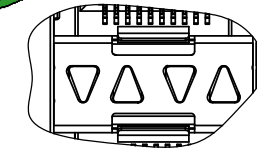
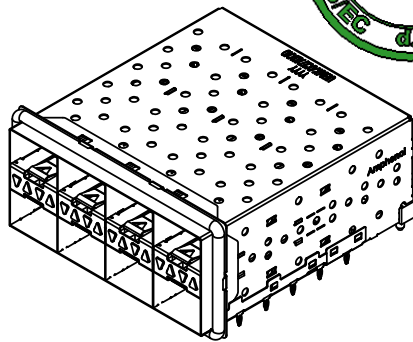
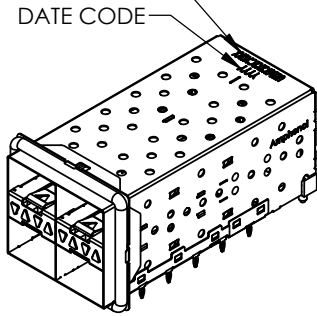




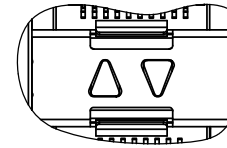
REVISIONS					
REV.	ECN	DESCRIPTION	DATE	APPROVED	
A	-	PROPOSAL	SEP01/11	A.G.	

PART NUMBER
(LAST DIGIT INDICATING
PACKAGING TYPE, NOT
PRINTED ON THE PART)

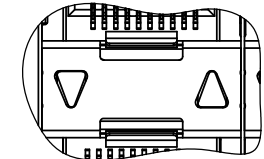
DATE CODE



UE86-KX427-10XX1
(4 LIGHT PIPES PER 2X1)



UE86-KX427-20XX1
(2 INNER LIGHT PIPES PER 2X1)



UE86-KX427-30XX1
(2 OUTER LIGHT PIPES PER 2X1)

LIGHT PIPE CONFIGURATIONS

MATERIAL: (RoHS COMPLIANT)

CAGE - PRESS FIT:
COPPER ALLOY
PLATING:
NICKEL 2.54 µm MIN.
CONNECTOR - PRESS FIT:
PLASTIC HOUSING:
LCP, FLAMMABILITY RATING UL94-V0.
CONTACTS:
PHOSPHOR BRONZE
PLATING OPTION:
SEE AMPHENOL PART NUMBER
CONFIGURATION FOR OPTIONS.

LIGHT PIPE:
CLEAR POLYCARBONATE, FLAMMABILITY
RATING UL94-V0.

PACKAGING:
TRAY PACKAGING.
TEMPERATURE RANGE:
-40°C TO +85°

AMPHENOL PART NUMBER CONFIGURATION

UE86 - K X 4 2 7 - X 0 X X 1

NUMBER OF PORTS

- 1 = 2X1
- 2 = 2X2
- 4 = 2X4
- 6 = 2X6
- 8 = 2X8

LIGHT PIPE CONFIGURATION

- 1 = 4 LIGHT PIPES PER 2X1
- 2 = 2 INNER LIGHT PIPES PER 2X1
- 3 = 2 OUTER LIGHT PIPES PER 2X1

PACKAGING

- 1 = TRAY

CAGE PLATING

- 2 = NICKEL

PRESS FIT CONNECTOR PLATING

- 3 = 0.76 µm MIN. GOLD ON MATING AREA
3.81-7.62 µm MATTE TIN ON TERMINATION
- 6 = 0.38 µm MIN. GOLD ON MATING AREA
3.81-7.62 µm MATTE TIN ON TERMINATION

DO NOT SCALE DRAWING

THIS DOCUMENT CONTAINS PROPRIETARY INFORMATION AND SUCH INFORMATION MAY NOT BE DISCLOSED TO OTHERS FOR ANY PURPOSE OR USED FOR MANUFACTURING PURPOSES WITHOUT PERMISSION FROM AMPHENOL CANADA CORP.

UNLESS OTHERWISE SPECIFIED
DIMENSIONS ARE IN MILLIMETERS
TOLERANCES ARE:

DECIMALS ANGLES
X.X ± 0.25 ± 1°
X.XX ± 0.15

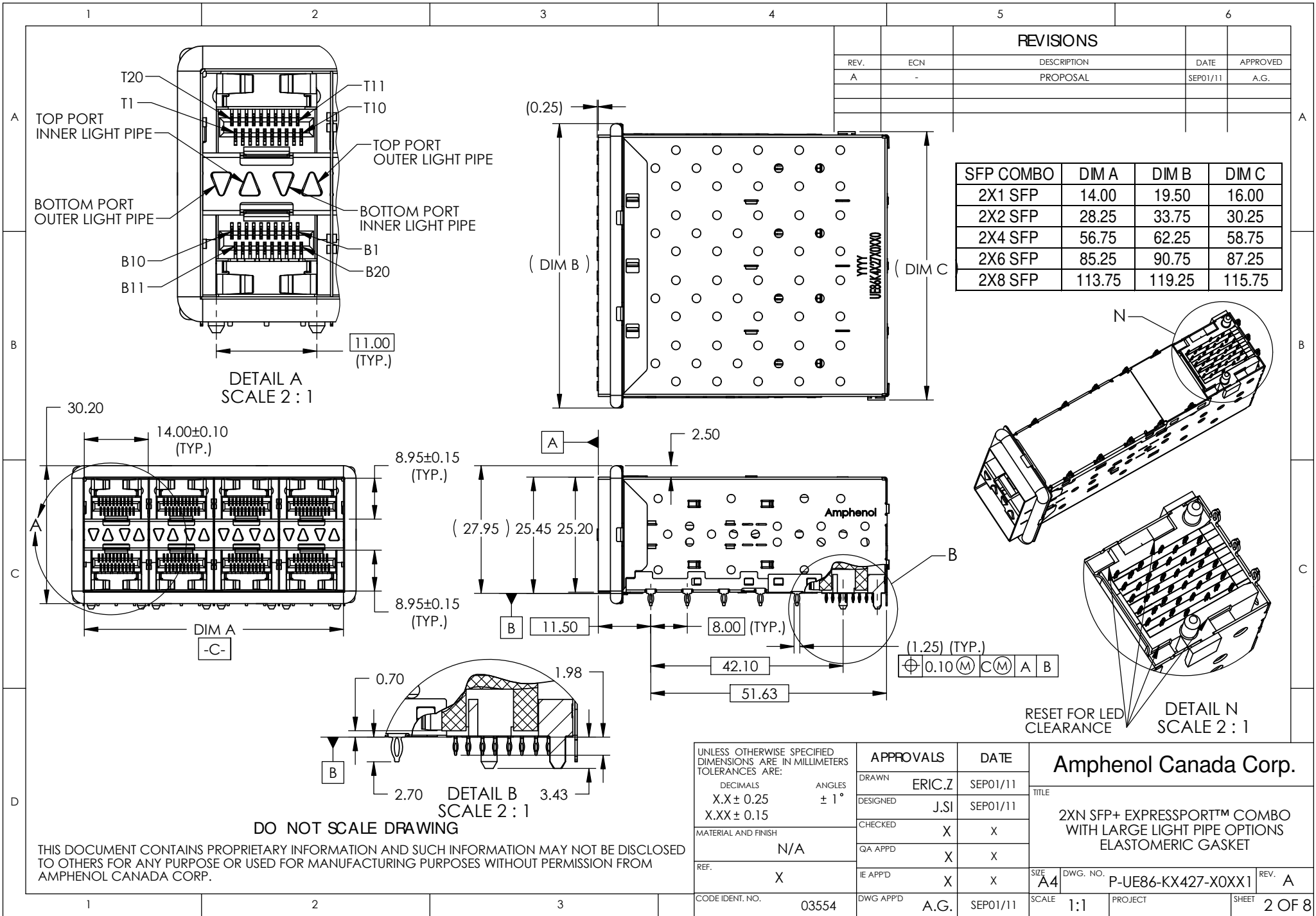
MATERIAL AND FINISH
N/A

REF. X

CODE IDENT. NO. 03554

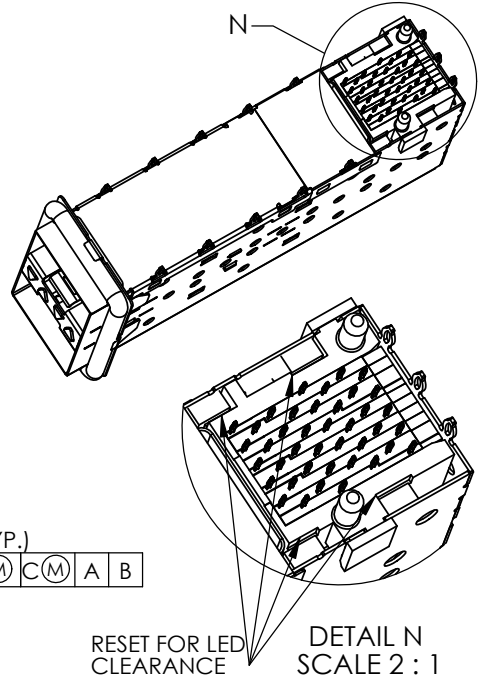
APPROVALS		DATE
DRAWN	ERIC.Z	SEP01/11
DESIGNED	J.SI	SEP01/11
CHECKED	X	X
QA APPD	X	X
IE APPD	X	X
DWG APPD	A.G.	SEP01/11

Amphenol Canada Corp.		
TITLE	2XN SFP+ EXPRESSPORT™ COMBO WITH LARGE LIGHT PIPE OPTIONS ELASTOMERIC GASKET	
SIZE	DWG. NO.	REV.
A4	P-UE86-KX427-X0XX1	A
SCALE	PROJECT	SHEET
2:3		1 OF 8



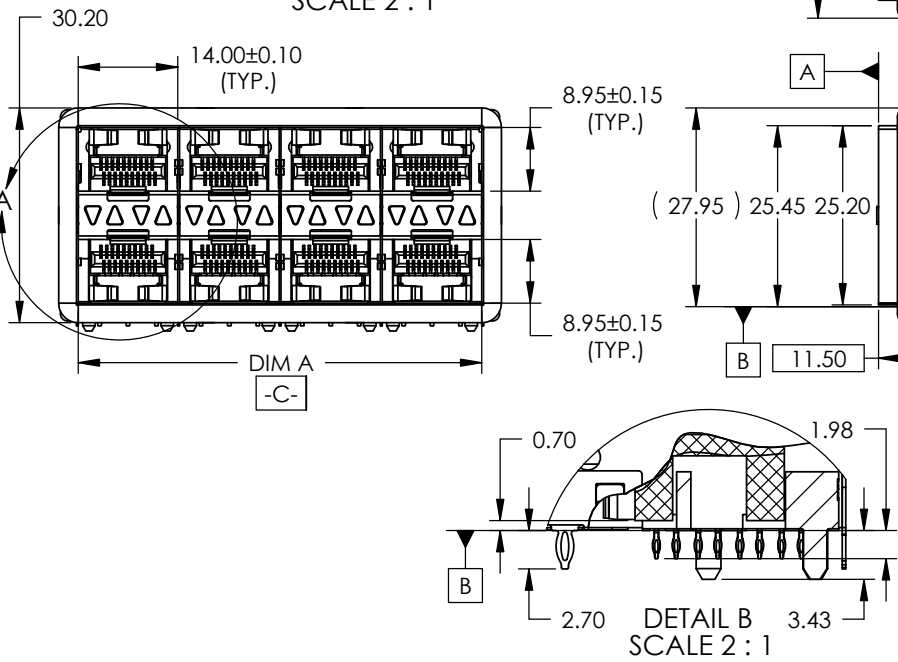
REVISIONS				
REV.	ECN	DESCRIPTION	DATE	APPROVED
A	-	PROPOSAL	SEP01/11	A.G.

SFP COMBO	DIM A	DIM B	DIM C
2X1 SFP	14.00	19.50	16.00
2X2 SFP	28.25	33.75	30.25
2X4 SFP	56.75	62.25	58.75
2X6 SFP	85.25	90.75	87.25
2X8 SFP	113.75	119.25	115.75

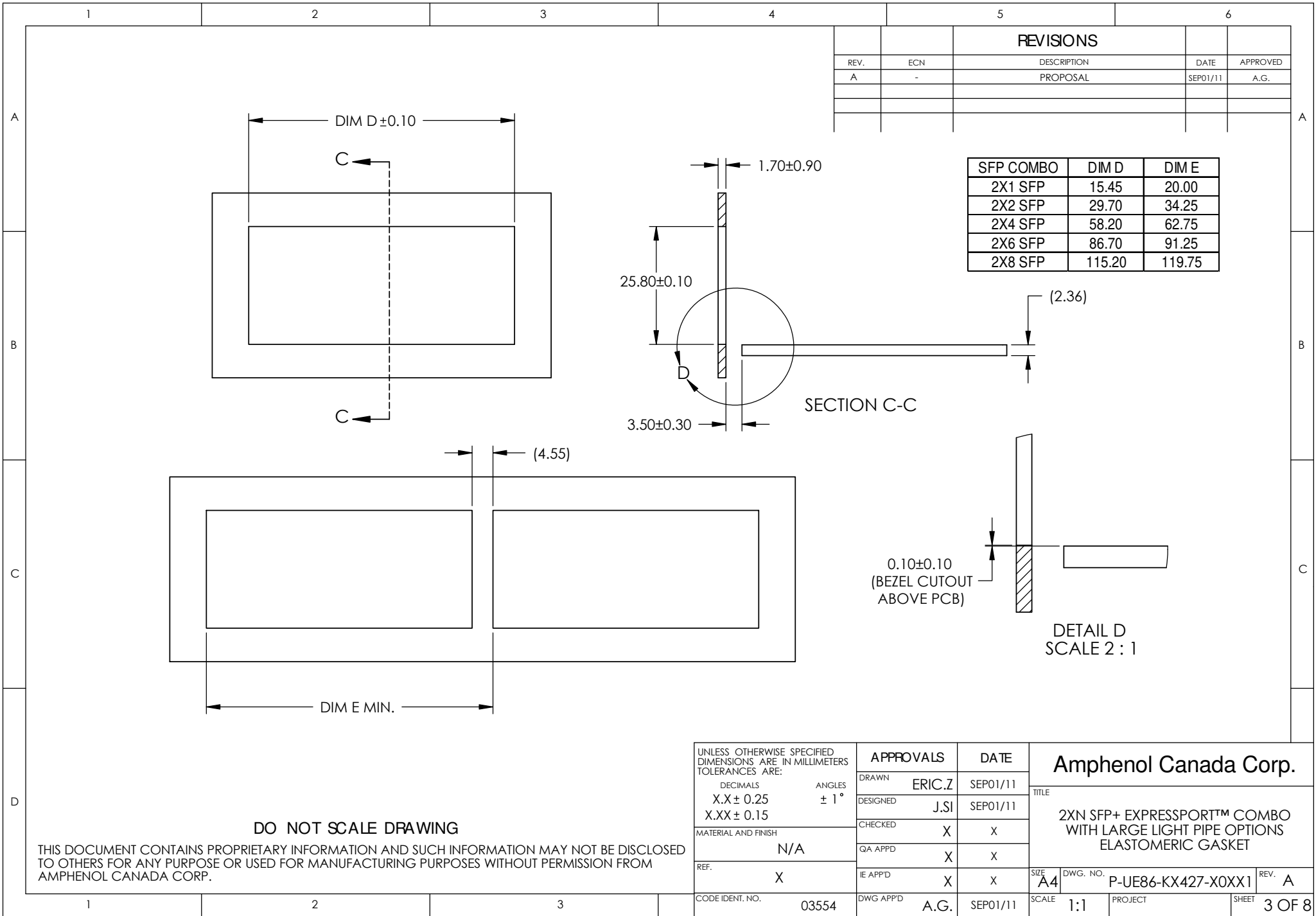


UNLESS OTHERWISE SPECIFIED DIMENSIONS ARE IN MILLIMETERS TOLERANCES ARE:		APPROVALS		DATE	
DECIMALS	ANGLES	DRAWN	ERIC.Z	SEP01/11	
X.X ± 0.25	± 1°	DESIGNED	J.SI	SEP01/11	
X.XX ± 0.15		CHECKED	X	X	
MATERIAL AND FINISH	N/A	QA APPD	X	X	
REF.	X	IE APPD	X	X	
CODE IDENT. NO.	03554	DWG APPD	A.G.	SEP01/11	

Amphenol Canada Corp.		
TITLE	2XN SFP+ EXPRESSPORT™ COMBO WITH LARGE LIGHT PIPE OPTIONS ELASTOMERIC GASKET	
SIZE	DWG. NO.	REV.
A4	P-UE86-KX427-X0XX1	A
SCALE	PROJECT	SHEET
1:1		2 OF 8

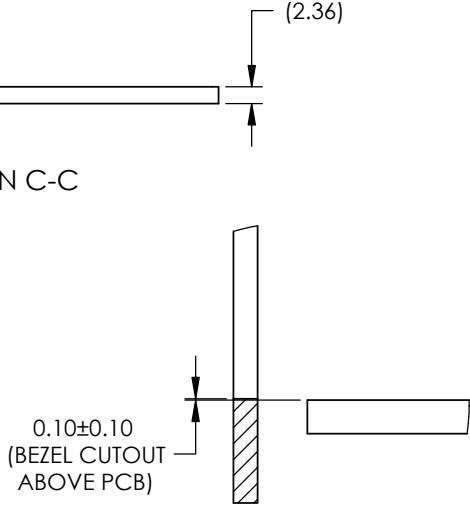


THIS DOCUMENT CONTAINS PROPRIETARY INFORMATION AND SUCH INFORMATION MAY NOT BE DISCLOSED TO OTHERS FOR ANY PURPOSE OR USED FOR MANUFACTURING PURPOSES WITHOUT PERMISSION FROM AMPHENOL CANADA CORP.



REVISIONS				
REV.	ECN	DESCRIPTION	DATE	APPROVED
A	-	PROPOSAL	SEP01/11	A.G.

SFP COMBO	DIM D	DIM E
2X1 SFP	15.45	20.00
2X2 SFP	29.70	34.25
2X4 SFP	58.20	62.75
2X6 SFP	86.70	91.25
2X8 SFP	115.20	119.75



DETAIL D
SCALE 2 : 1

UNLESS OTHERWISE SPECIFIED DIMENSIONS ARE IN MILLIMETERS TOLERANCES ARE:		APPROVALS		DATE
DECIMALS	ANGLES	DRAWN	ERIC.Z	SEP01/11
X.X ± 0.25	± 1°	DESIGNED	J.SI	SEP01/11
X.XX ± 0.15		CHECKED	X	X
MATERIAL AND FINISH	N/A	QA APP'D	X	X
REF.	X	IE APP'D	X	X
CODE IDENT. NO.	03554	DWG APP'D	A.G.	SEP01/11

Amphenol Canada Corp.				
TITLE				
2XN SFP+ EXPRESSPORT™ COMBO WITH LARGE LIGHT PIPE OPTIONS ELASTOMERIC GASKET				
SIZE	DWG. NO.	REV.		
A4	P-UE86-KX427-X0XX1	A		
SCALE	PROJECT	SHEET		
1:1		3 OF 8		

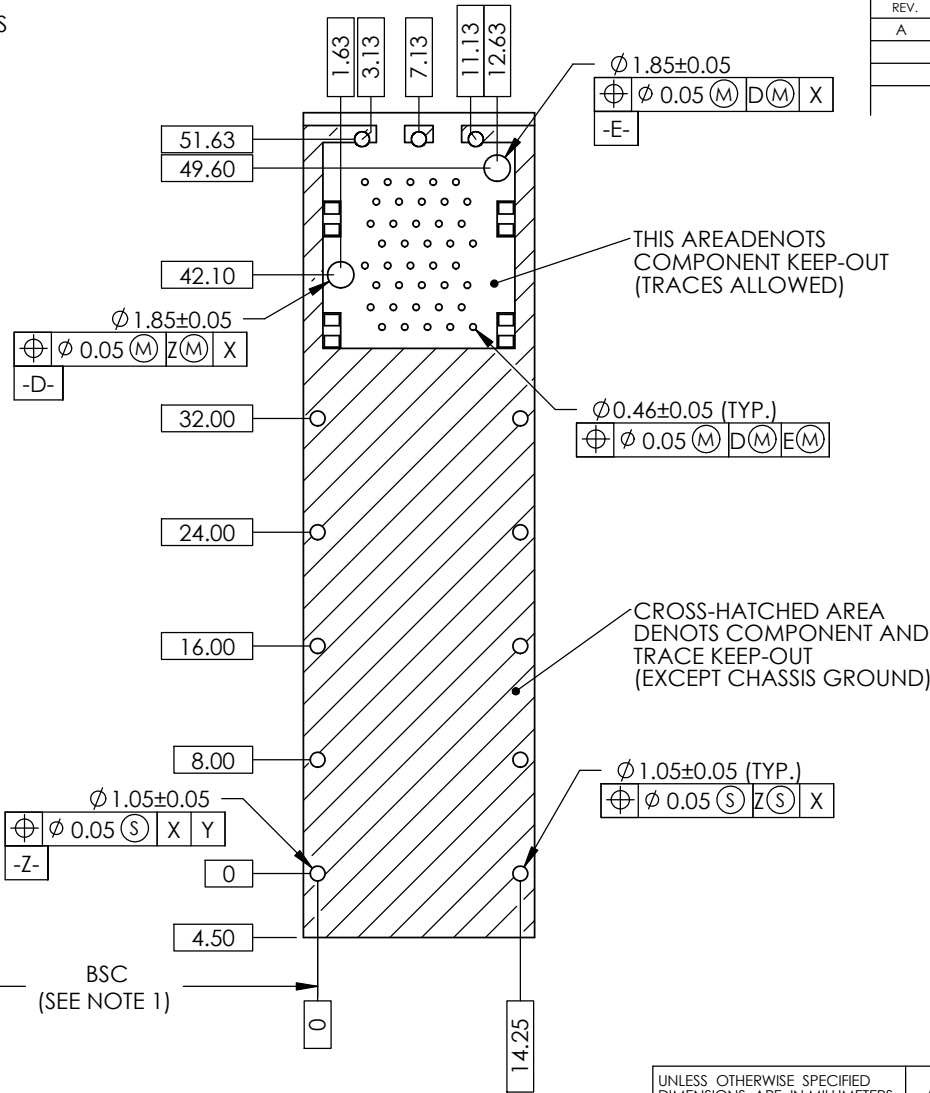
DO NOT SCALE DRAWING

THIS DOCUMENT CONTAINS PROPRIETARY INFORMATION AND SUCH INFORMATION MAY NOT BE DISCLOSED TO OTHERS FOR ANY PURPOSE OR USED FOR MANUFACTURING PURPOSES WITHOUT PERMISSION FROM AMPHENOL CANADA CORP.

NOTES:

1. DATUM AND BASIC DIMENSIONS ESTABLISHED BY CUSTOMER.

2. 1.05 mm DIAMETER HOLES ARE CHASSIS GROUND 13 HOLES).



REVISIONS				
REV.	ECN	DESCRIPTION	DATE	APPROVED
A	-	PROPOSAL	SEP01/11	A.G.

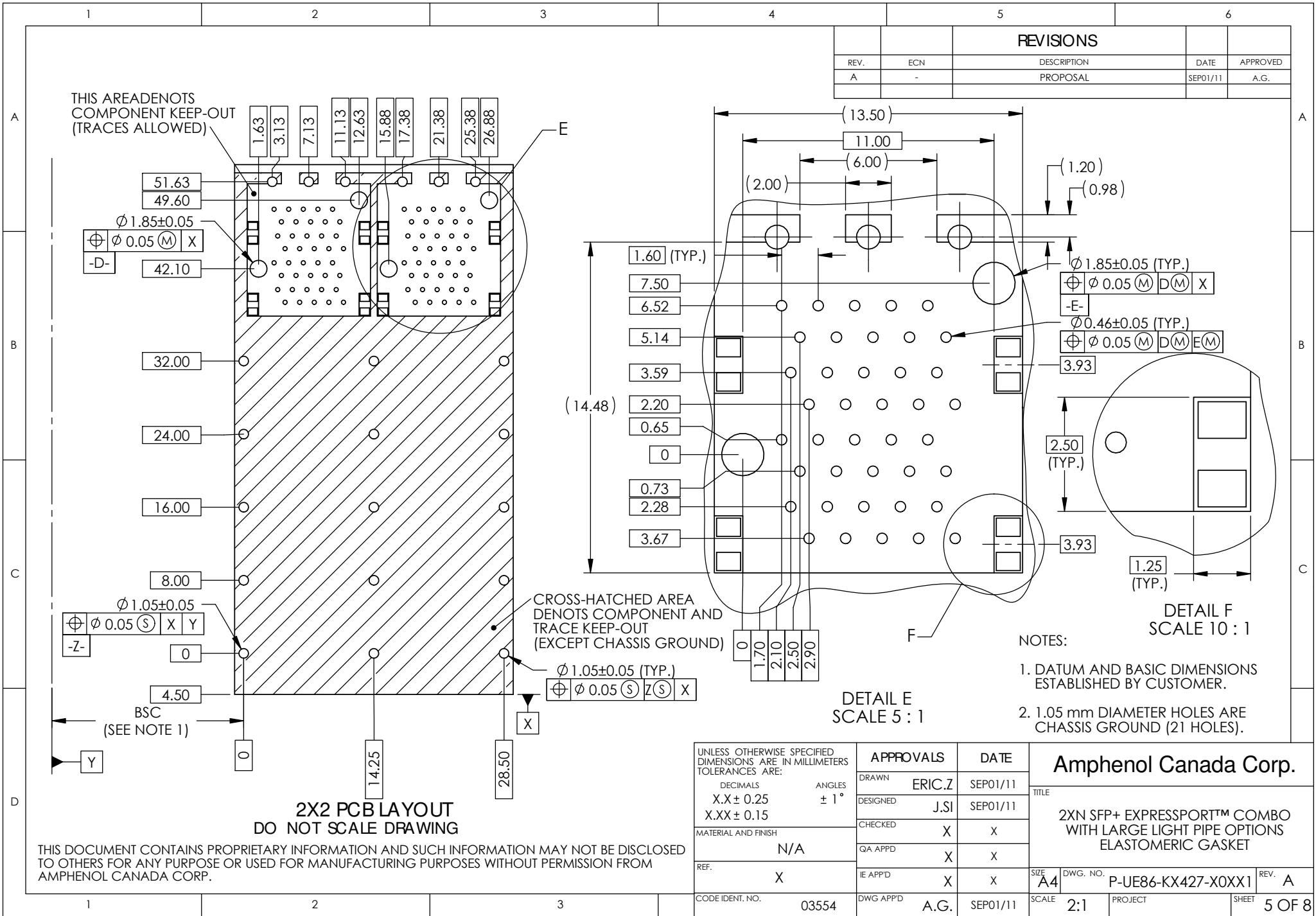
2X1 PCB LAYOUT

DO NOT SCALE DRAWING

THIS DOCUMENT CONTAINS PROPRIETARY INFORMATION AND SUCH INFORMATION MAY NOT BE DISCLOSED TO OTHERS FOR ANY PURPOSE OR USED FOR MANUFACTURING PURPOSES WITHOUT PERMISSION FROM AMPHENOL CANADA CORP.

UNLESS OTHERWISE SPECIFIED DIMENSIONS ARE IN MILLIMETERS TOLERANCES ARE: DECIMALS X.X ± 0.25 X.XX ± 0.15 MATERIAL AND FINISH N/A REF. X CODE IDENT. NO. 03554	APPROVALS		DATE
	DRAWN ERIC.Z	SEP01/11	
	DESIGNED J.SI	SEP01/11	
	CHECKED X	X	
	QA APP'D X	X	
	IE APP'D X	X	
	DWG APP'D A.G.	SEP01/11	

Amphenol Canada Corp.			
TITLE			
2XN SFP+ EXPRESSPORT™ COMBO WITH LARGE LIGHT PIPE OPTIONS ELASTOMERIC GASKET			
SIZE A4	DWG. NO. P-UE86-KX427-X0XX1	REV. A	
SCALE 1:1	PROJECT	SHEET 4 OF 8	



REVISIONS				
REV.	ECN	DESCRIPTION	DATE	APPROVED
A	-	PROPOSAL	SEP01/11	A.G.

THIS AREA DENOTES COMPONENT KEEP-OUT (TRACES ALLOWED)

CROSS-HATCHED AREA DENOTES COMPONENT AND TRACE KEEP-OUT (EXCEPT CHASSIS GROUND)

2X2 PCB LAYOUT
DO NOT SCALE DRAWING

THIS DOCUMENT CONTAINS PROPRIETARY INFORMATION AND SUCH INFORMATION MAY NOT BE DISCLOSED TO OTHERS FOR ANY PURPOSE OR USED FOR MANUFACTURING PURPOSES WITHOUT PERMISSION FROM AMPHENOL CANADA CORP.

NOTES:

1. DATUM AND BASIC DIMENSIONS ESTABLISHED BY CUSTOMER.
2. 1.05 mm DIAMETER HOLES ARE CHASSIS GROUND (21 HOLES).

DETAIL F
SCALE 10 : 1

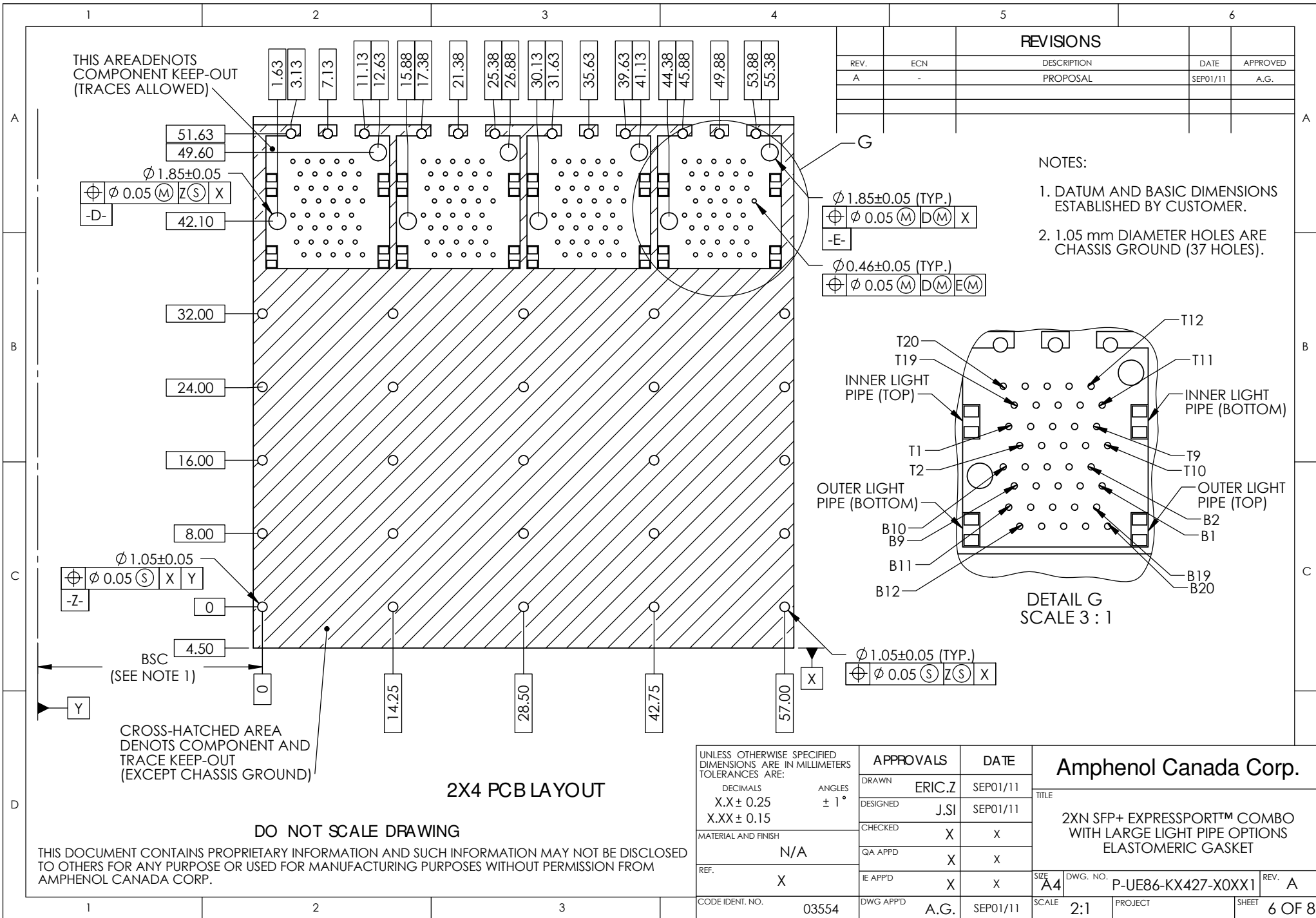
DETAIL E
SCALE 5 : 1

UNLESS OTHERWISE SPECIFIED DIMENSIONS ARE IN MILLIMETERS TOLERANCES ARE:

DECIMALS	ANGLES
X.X ± 0.25	± 1°
X.XX ± 0.15	
MATERIAL AND FINISH	N/A
REF.	X
CODE IDENT. NO.	03554

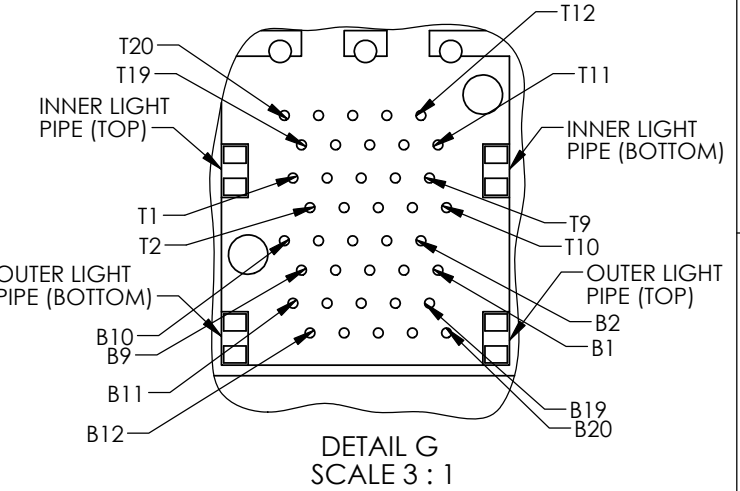
APPROVALS		DATE
DRAWN	ERIC.Z	SEP01/11
DESIGNED	J.SI	SEP01/11
CHECKED	X	X
QA APPD	X	X
IE APPD	X	X
DWG APPD	A.G.	SEP01/11

Amphenol Canada Corp.	
TITLE	2XN SFP+ EXPRESSPORT™ COMBO WITH LARGE LIGHT PIPE OPTIONS ELASTOMERIC GASKET
SIZE	A4
DWG. NO.	P-UE86-KX427-X0XX1
REV.	A
SCALE	2:1
PROJECT	
SHEET	5 OF 8



REVISIONS				
REV.	ECN	DESCRIPTION	DATE	APPROVED
A	-	PROPOSAL	SEP01/11	A.G.

- NOTES:
- DATUM AND BASIC DIMENSIONS ESTABLISHED BY CUSTOMER.
 - 1.05 mm DIAMETER HOLES ARE CHASSIS GROUND (37 HOLES).



$\phi 1.05 \pm 0.05$ (TYP.)	$\phi 0.05$ (S) (Z) (S) (X)
-----------------------------	-----------------------------

THIS AREADENOTS COMPONENT KEEP-OUT (TRACES ALLOWED)

$\phi 1.85 \pm 0.05$	$\phi 0.05$ (M) (Z) (S) (X)
-D-	

$\phi 1.05 \pm 0.05$	$\phi 0.05$ (S) (X) (Y)
-Z-	

BSC (SEE NOTE 1)	4.50
------------------	------

CROSS-HATCHED AREA DENOTS COMPONENT AND TRACE KEEP-OUT (EXCEPT CHASSIS GROUND)

2X4 PCB LAYOUT

DO NOT SCALE DRAWING

THIS DOCUMENT CONTAINS PROPRIETARY INFORMATION AND SUCH INFORMATION MAY NOT BE DISCLOSED TO OTHERS FOR ANY PURPOSE OR USED FOR MANUFACTURING PURPOSES WITHOUT PERMISSION FROM AMPHENOL CANADA CORP.

UNLESS OTHERWISE SPECIFIED DIMENSIONS ARE IN MILLIMETERS TOLERANCES ARE:	DECIMALS	ANGLES
	$X.X \pm 0.25$	$\pm 1^\circ$
	$X.XX \pm 0.15$	
MATERIAL AND FINISH	N/A	
REF.	X	
CODE IDENT. NO.	03554	

Amphenol Canada Corp.	
TITLE	2XN SFP+ EXPRESSPORT™ COMBO WITH LARGE LIGHT PIPE OPTIONS ELASTOMERIC GASKET
SIZE	A4
DWG. NO.	P-UE86-KX427-X0XX1
REV.	A
SCALE	2:1
PROJECT	
SHEET	6 OF 8

NOTES:

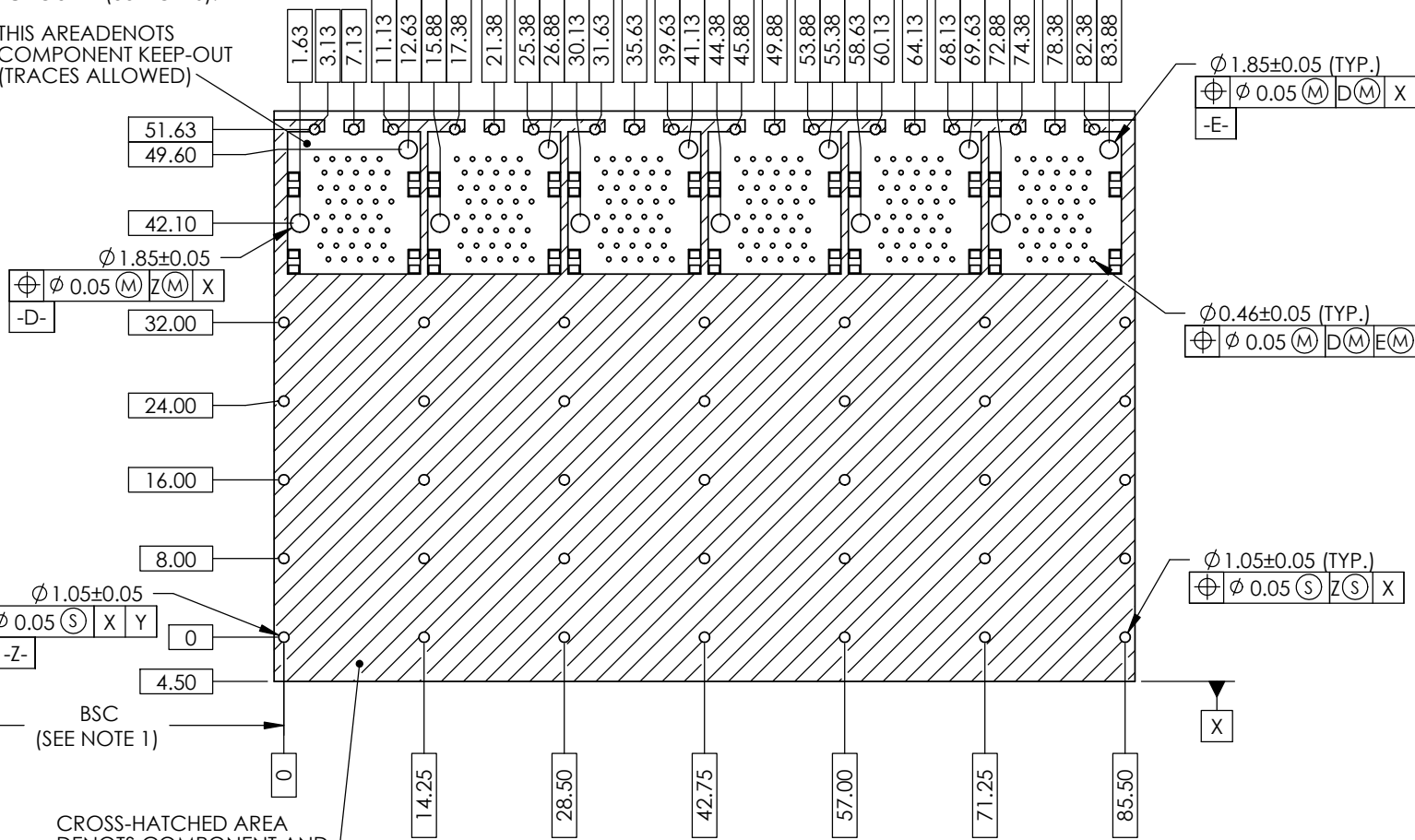
1. DATUM AND BASIC DIMENSIONS ESTABLISHED BY CUSTOMER.

2. 1.05 mm DIAMETER HOLES ARE CHASSIS GROUND (53 HOLES).

THIS AREA DENOTES COMPONENT KEEP-OUT (TRACES ALLOWED)

REVISIONS

REV.	ECN	DESCRIPTION	DATE	APPROVED
A	-	PROPOSAL	SEP01/11	A.G.



CROSS-HATCHED AREA DENOTES COMPONENT AND TRACE KEEP-OUT (EXCEPT CHASSIS GROUND)

2X6 PCB LAYOUT

DO NOT SCALE DRAWING

THIS DOCUMENT CONTAINS PROPRIETARY INFORMATION AND SUCH INFORMATION MAY NOT BE DISCLOSED TO OTHERS FOR ANY PURPOSE OR USED FOR MANUFACTURING PURPOSES WITHOUT PERMISSION FROM AMPHENOL CANADA CORP.

UNLESS OTHERWISE SPECIFIED DIMENSIONS ARE IN MILLIMETERS TOLERANCES ARE:

DECIMALS ANGLES
 X.X ± 0.25 ± 1°
 X.XX ± 0.15

MATERIAL AND FINISH

N/A

REF. X

CODE IDENT. NO. 03554

APPROVALS		DATE
DRAWN	ERIC.Z	SEP01/11
DESIGNED	J.SI	SEP01/11
CHECKED	X	X
QA APPD	X	X
IE APPD	X	X
DWG APPD	A.G.	SEP01/11

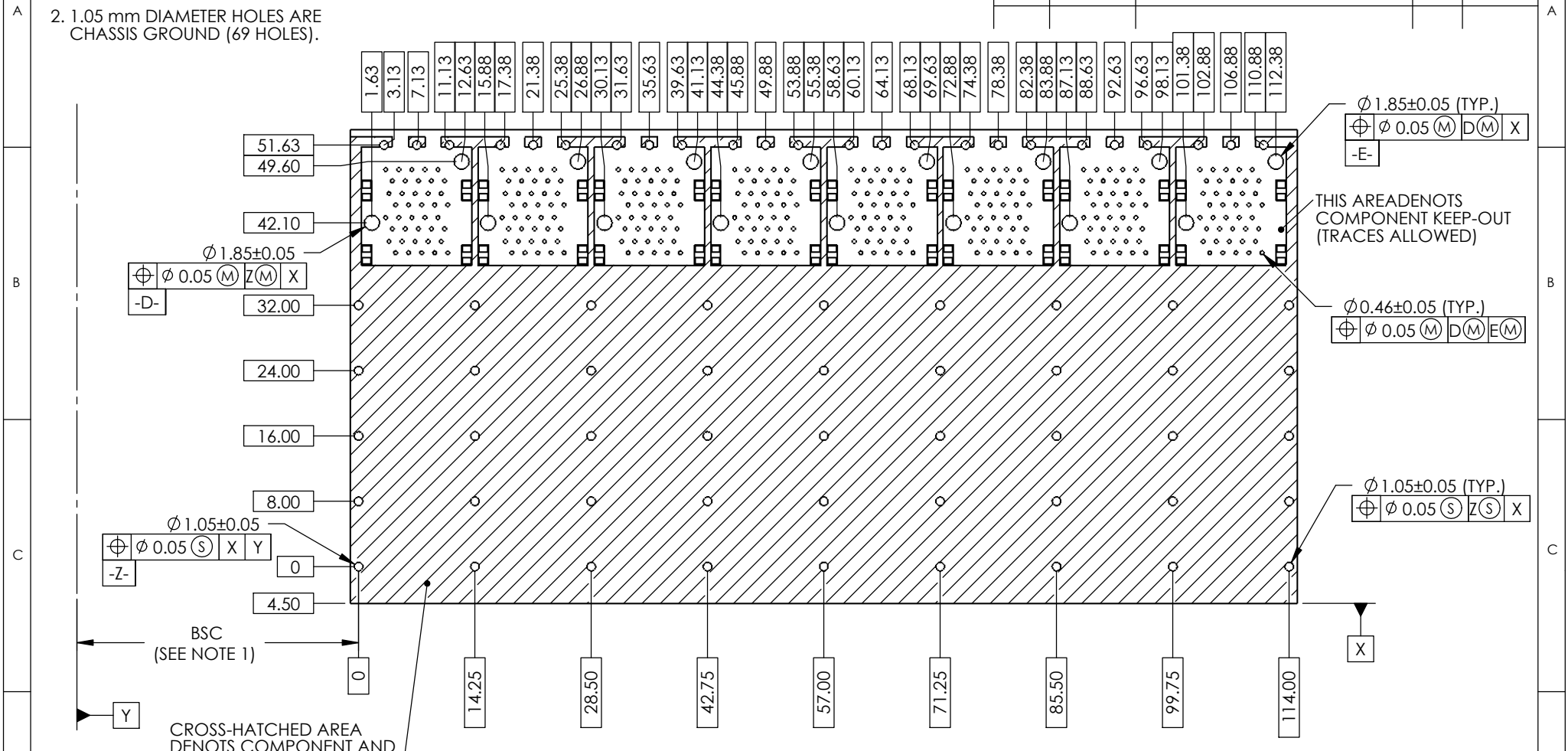
Amphenol Canada Corp.		
TITLE		
2XN SFP+ EXPRESSPORT™ COMBO WITH LARGE LIGHT PIPE OPTIONS ELASTOMERIC GASKET		
SIZE	DWG. NO.	REV.
A4	P-UE86-KX427-X0XX1	A
SCALE	PROJECT	SHEET
3:2		7 OF 8

NOTES:

1. DATUM AND BASIC DIMENSIONS ESTABLISHED BY CUSTOMER.
2. 1.05 mm DIAMETER HOLES ARE CHASSIS GROUND (69 HOLES).

REVISIONS

REV.	ECN	DESCRIPTION	DATE	APPROVED
A	-	PROPOSAL	SEP01/11	A.G.



CROSS-HATCHED AREA DENOTS COMPONENT AND TRACE KEEP-OUT (EXCEPT CHASSIS GROUND)

2X8 PCB LAYOUT

DO NOT SCALE DRAWING

THIS DOCUMENT CONTAINS PROPRIETARY INFORMATION AND SUCH INFORMATION MAY NOT BE DISCLOSED TO OTHERS FOR ANY PURPOSE OR USED FOR MANUFACTURING PURPOSES WITHOUT PERMISSION FROM AMPHENOL CANADA CORP.

UNLESS OTHERWISE SPECIFIED DIMENSIONS ARE IN MILLIMETERS TOLERANCES ARE:		APPROVALS		DATE	Amphenol Canada Corp.	
DECIMALS	ANGLES	DRAWN	ERIC.Z	SEP01/11		
X.X ± 0.25	± 1°	DESIGNED	J.SI	SEP01/11	TITLE	
X.XX ± 0.15		CHECKED	X	X	2XN SFP+ EXPRESSPORT™ COMBO WITH LARGE LIGHT PIPE OPTIONS ELASTOMERIC GASKET	
MATERIAL AND FINISH	N/A	QA APPD	X	X	SIZE	DWG. NO.
REF.	X	IE APPD	X	X	A4	P-UE86-KX427-X0XX1
CODE IDENT. NO.	03554	DWG APPD	A.G.	SEP01/11	SCALE	1:1
					PROJECT	
					SHEET	8 OF 8