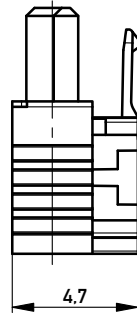
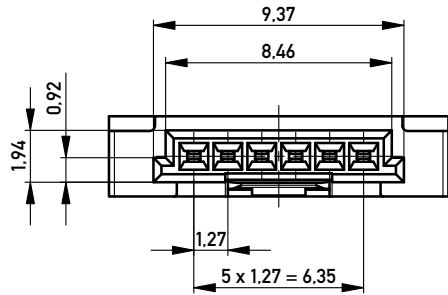
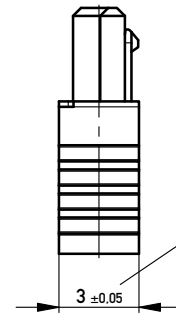


Kabelführung: schwarz  
cable guide: black



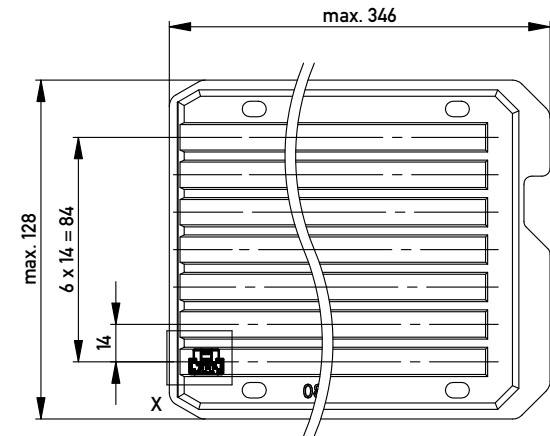
mit aufgesetzter  
Kabelführung  
(Anlieferungszustand)  
with cable guide mounted  
(state at time of supply)



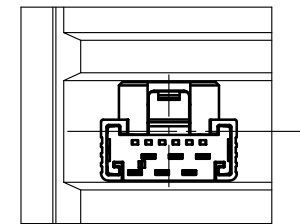
Kabelführung verpresst  
(cable guide pressed on)

Funktionsrelevantes  
Prüfmerkmal  
siehe Verarbeitungsspezifikation  
MiniBridge ERNI Electronics GmbH



Verpackt in Tray - tray packaging  
Verpackungseinheit 168 Stück - packaging unit 168 pcs



Einzelheit X - detail X  
M 2:1



ohne Hilfsmittel lösbar  
without tool unlockable

Information:		Tolerances	 All Dimensions in mm	Scale 5:1
All rights reserved. Only for Information. To ensure that this is the latest version of this drawing, please contact one of the ERNI companies before using.		Subject to modification without prior notice. Drawing will not be updated.		Designation <b>F 1.27 SRC A IDC 06-pin</b> <b>d=1,07 AWG 24/26 Friction Lock</b>
 www.ERNI.com		<b>224399</b>		I A3
c	19.05.2015	Class		SRCA
Index	Date			

Copyright by ERNI GmbH  
Proprietary notice pursuant to ISO 9006 to be observed.