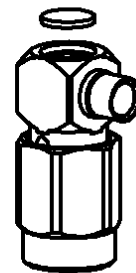
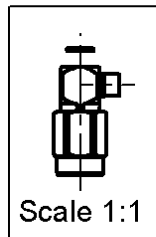
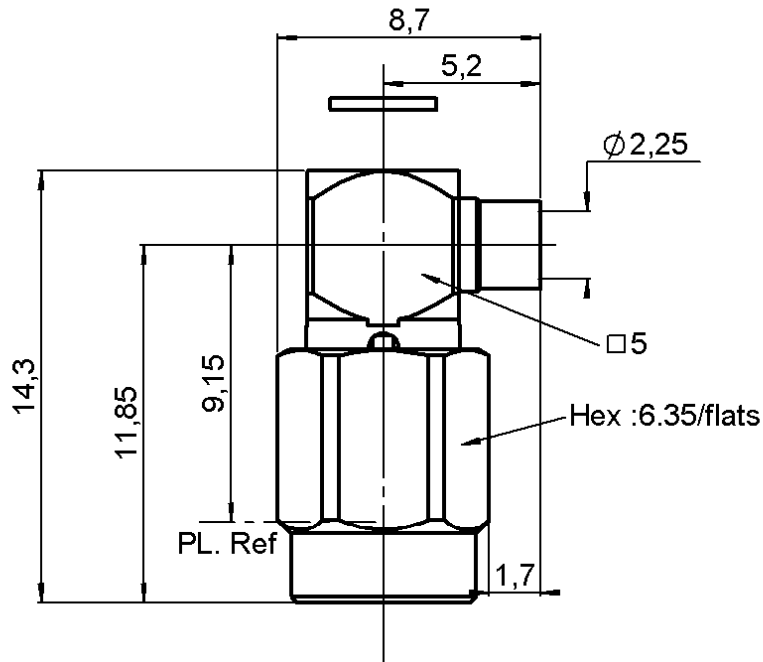


RIGHT ANGLE PLUG SOLDER TYPE

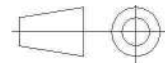
R121.153.000

CABLE .085

Series : SSMA



All dimensions are in mm.



| COMPONENTS | MATERIALS | PLATING (µm) |
|----------------|-------------------------|------------------------|
| BODY | BERYLLIUM COPPER, BRASS | NICKEL 2 |
| CENTER CONTACT | BERYLLIUM COPPER | GOLD 2.5 OVER NICKEL 2 |
| OUTER CONTACT | - | - |
| INSULATOR | PTFE | - |
| GASKET | SILICONE RUBBER | - |
| OTHERS PARTS | STAINLESS STEEL | PASSIVATED |
| - | - | - |
| - | - | - |

Issue : 0928 E

In the effort to improve our products, we reserve the right to make changes judged to be necessary.



RIGHT ANGLE PLUG SOLDER TYPE

R121.153.000

CABLE .085

Series : SSMA

PACKAGING

| Standard | Unit | Other |
|----------|------|-------------------|
| 1 | | Contact us |

SPECIFICATION

ELECTRICAL CHARACTERISTICS

| | | |
|---------------------------------|---------------|-----------------------------|
| Impedance | | 50 Ω |
| Frequency | | 0-12.4 GHz |
| VSWR | 1.10 + | 0,0100 x F(GHz) Maxi |
| Insertion loss | | .03 √F(GHz) dB Maxi |
| RF leakage | - (| AD - F(GHz)) dB Maxi |
| Voltage rating | | 250 Veff Maxi |
| Dielectric withstanding voltage | | 750 Veff mini |
| Insulation resistance | | 5000 MΩ mini |

CABLE ASSEMBLY

| Stripping | a | b | c | d | e | f |
|-----------|------|------|------|------|------|------|
| mm | 2,00 | 0,00 | 0,00 | 0,00 | 0,00 | 0,00 |

Assembly instruction : **Solder 02**

Recommended cable(s)
RG 405
KS 1

Characteristics indicated on this data sheet are those that can be achieved with the highest performance cable. Intrinsic limitations of the cable may diminish the performance of the assembly

Cable retention

- pull off **200** N mini
- torque **NA** N.cm

MECHANICAL CHARACTERISTICS

| | | |
|----------------------------|-----------|-----------|
| Center contact retention | | |
| Axial force – Mating end | 22 | N mini |
| Axial force – Opposite end | 22 | N mini |
| Torque | NA | N.cm mini |

TOOLING

| Part Number | Description | Hexagon |
|--------------|-----------------|---------|
| . | . | . |
| R282.118.010 | SSMA TOOLBOX | |

| | | |
|--------------------|---------------|------|
| Recommended torque | | |
| Mating | 80 | N.cm |
| Panel nut | NA | N.cm |
| Clamp nut | NA | N.cm |
| A/F clamp nut | 0,0000 | mm |

OTHER CHARACTERISTICS

| | | |
|-------------|---------------|-------------|
| Mating life | 1000 | Cycles mini |
| Weight | 2,3000 | g |

ENVIRONMENTAL

| | | |
|-----------------------|-----------------|-----------|
| Operating temperature | -65/+115 | ° C |
| Hermetic seal | NA | Atm.cm3/s |
| Panel leakage | NA | |

Issue : 0928 E

In the effort to improve our products, we reserve the right to make changes judged to be necessary.

