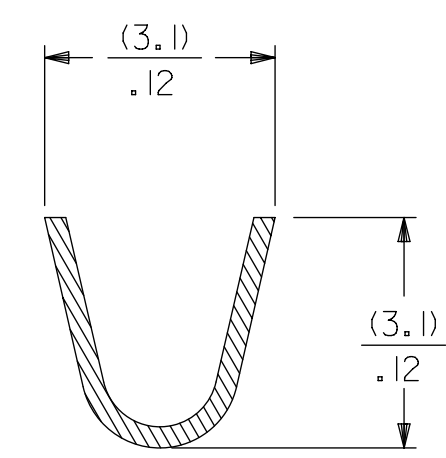
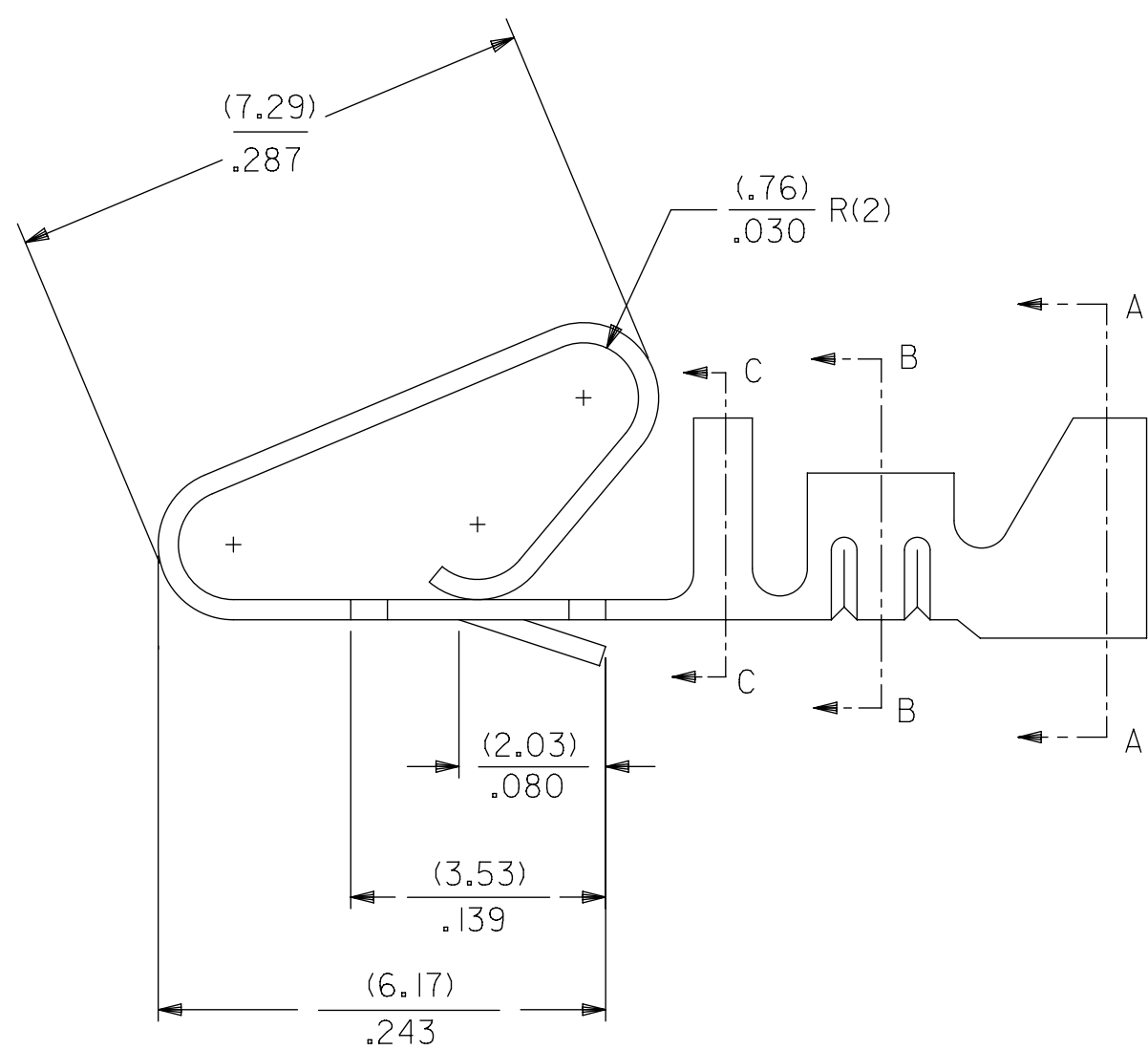
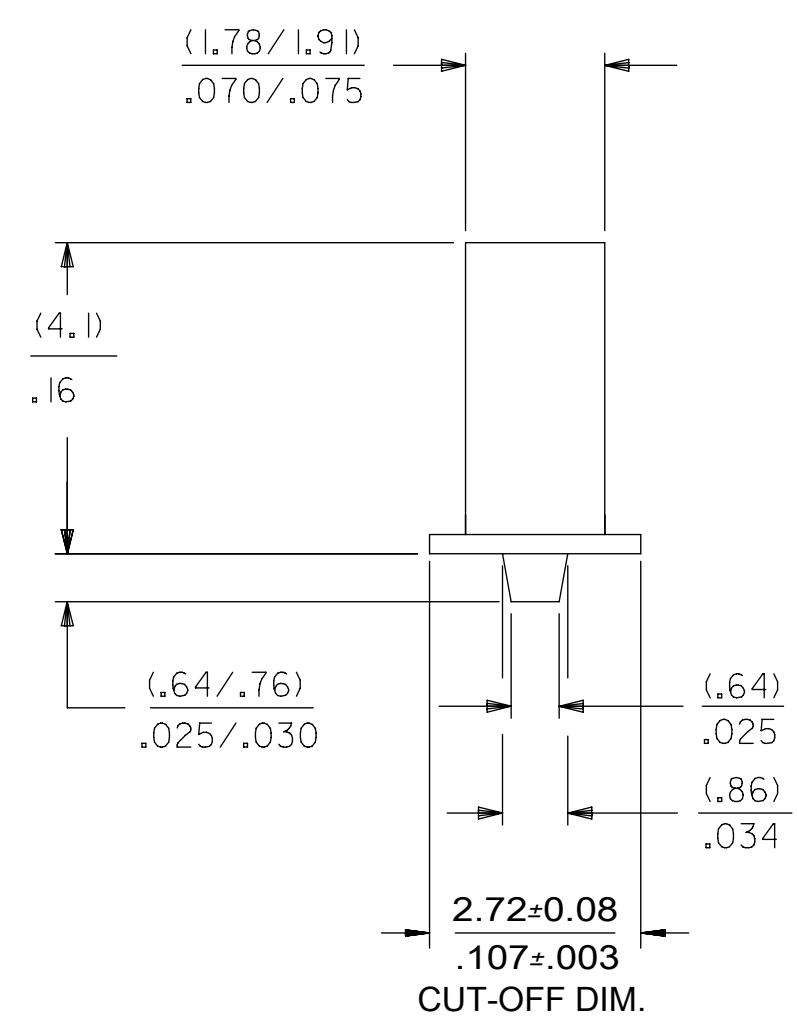
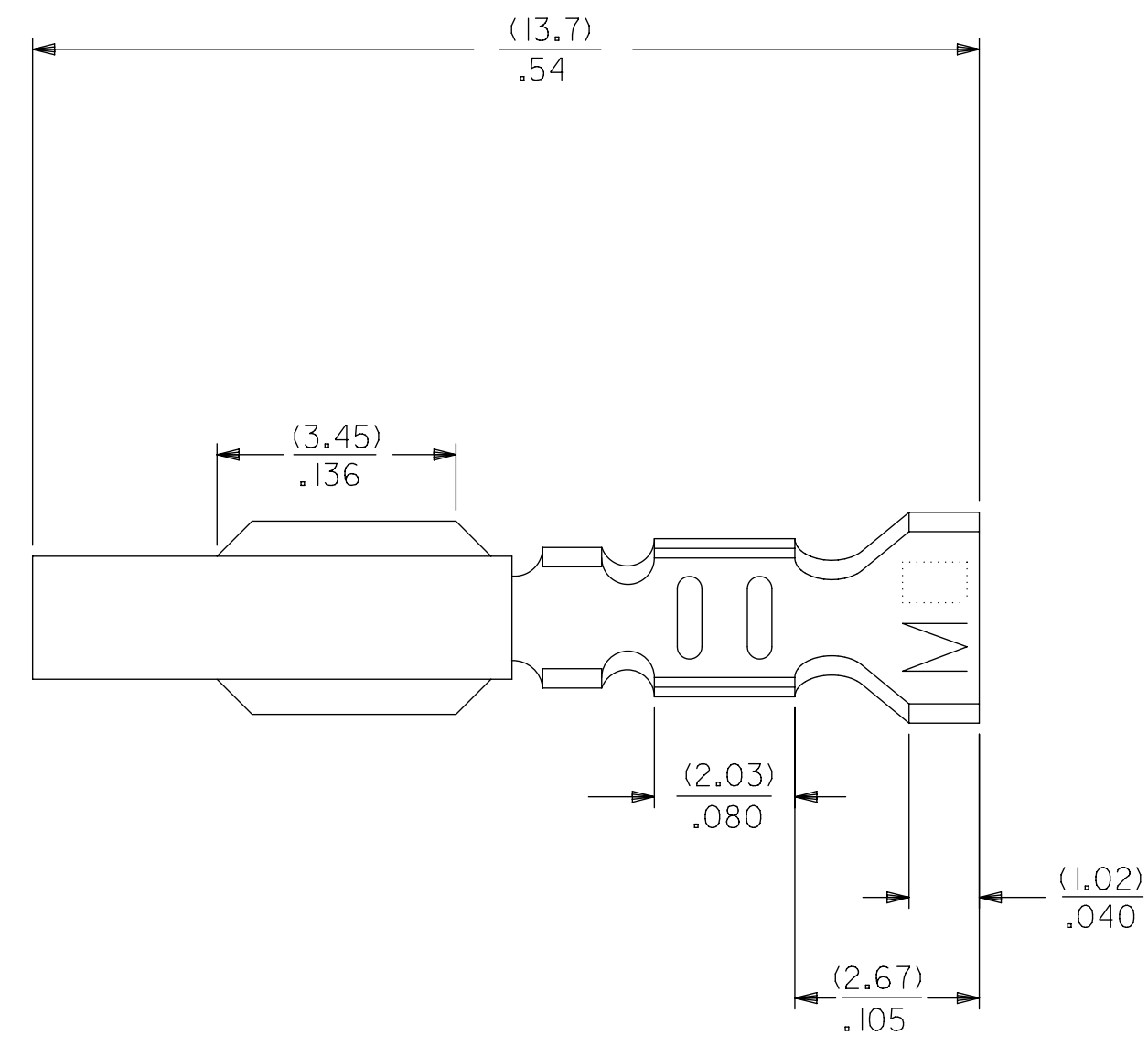
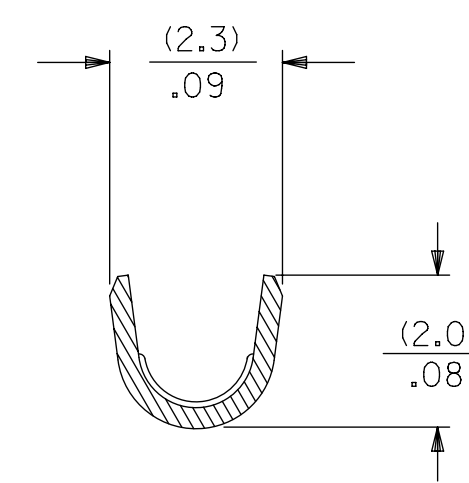


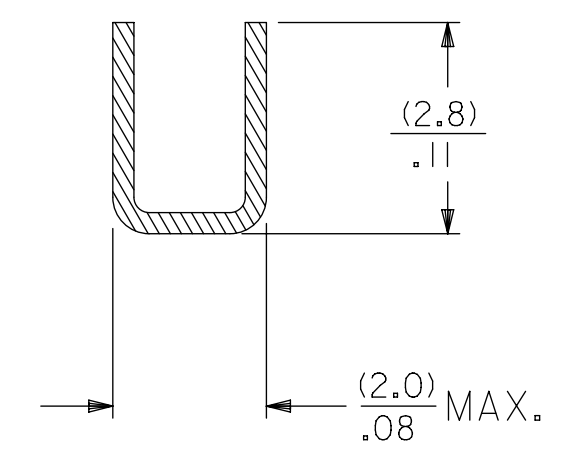
CHAIN FORM
SCALE 5:1



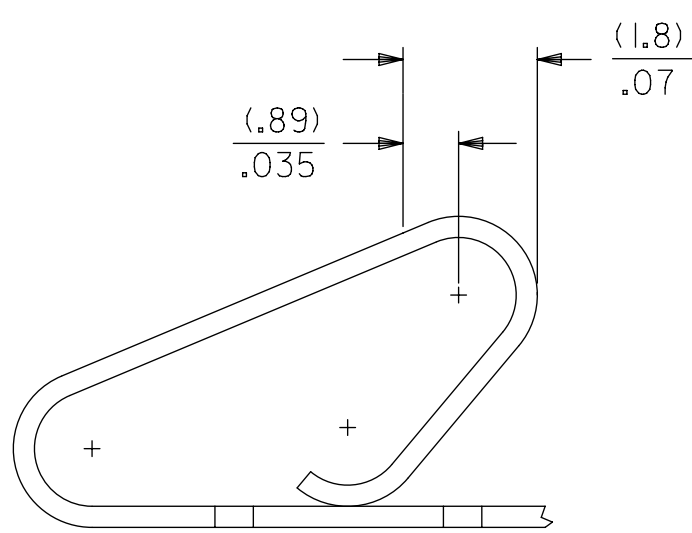
SECTION A-A



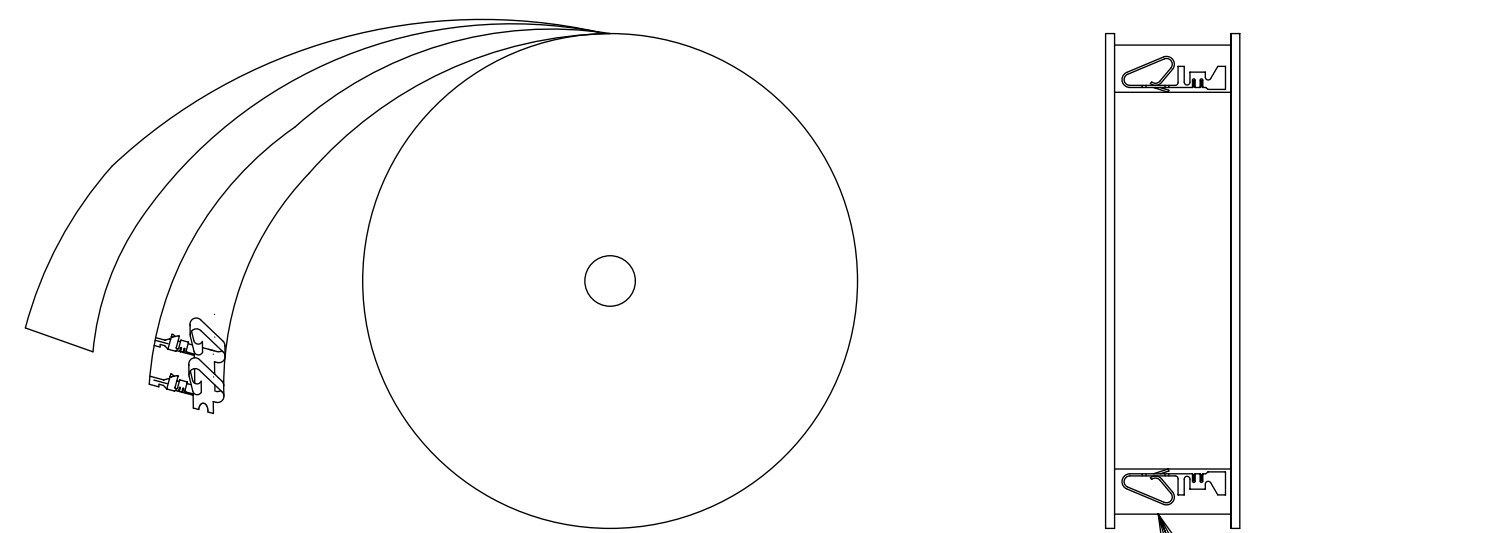
SECTION B-B



SECTION C-C



POST-PLATED SELECT GOLD LOCATION



WINDING DETAIL "B"

LEGEND

8818-* *-(*) *
 MATERIAL
 (.27)/.0106 THK.
 BLANK= BRASS
 A= PHOS BRONZE
 OPTION CODE
 BLANK=AS SHOWN
 WINDING SPEC
 BLANK=CHAIN, PER WINDING DETAIL "B"
 L=LOOSE
 PLATING
 SEE NOTE 2

EDP NO.	ENGINEERING NO.
	8818-(555)
	8818-(555)L
08-50-0008	8818-(P909)
08-50-0023	8818-(P909)L
40-01-1181	8818-(999)
40-01-1182	8818-A(999)
08-65-0128	8818-A(555)
08-65-0129	8818-A(555)L
08-52-0131	8818-A(P909)
08-52-0132	8818-A(P909)L
08-58-0135	8818-A(550)
08-58-0136	8818-A(550)L

- NOTES:
- MATERIAL: SEE LEGEND
 - FINISH:
 - (P909) OVERALL HOT TIN DIP: (0.00254)/.000100 MIN.
 - (550) SELECT GOLD: (0.00038)/.000015 MIN.
 - OVERALL GOLD FLASH: (0.00005)/.000002 MIN.
 - OVERALL NICKEL UNDERPLATE: (0.00076)/.000030 MIN.
 - (555) SELECT GOLD: (0.00038)/.000015 MIN.
 - OVERALL NICKEL UNDERPLATE: (0.00076)/.000030 MIN.
 - PRODUCT SPECIFICATION: PS-08-50
 - PACKAGING SPECIFICATION:
 - LOOSE TERMINALS: PER PK-2759-001
 - CHAIN FORM TERMINALS: PER PK-2759-002
 - CRIMP ACCEPTS 18-22 GA. WIRE WITH (2.79)/.110 MAX. INSULATION DIA.
 - DIMENSIONS GIVEN ACROSS CENTERLINES ARE SYMMETRICAL ABOUT THOSE CENTERLINES WITHIN HALF THE TOTAL TOLERANCE
 - TERMINAL FOR USE IN 41695 SERIES HOUSINGS
 - THIS PART CONFORMS TO CLASS B REQUIREMENTS OF COSMETIC SPECIFICATION PS-45499-002

THIS DRAWING CONTAINS INFORMATION THAT IS PROPRIETARY TO MOLEX ELECTRONIC TECHNOLOGIES, LLC AND SHOULD NOT BE USED WITHOUT WRITTEN PERMISSION									
SYMBOLS		DIMENSION UNITS		SCALE		CURRENT REV DESC: NOTE 4 UPDATED			
▽ = 0	▽ = 0	MM/IN	1:1						
▽ = 0	▽ = 0	GENERAL TOLERANCES (UNLESS SPECIFIED)							
▽ = 0	▽ = 0		MM	INCH					
▽ = 0	▽ = 0	4 PLACES ±	±			EC NO: 605479			
▽ = 0	▽ = 0	3 PLACES ±	± 0.01			DRWN: SS06 2018/09/12			
▽ = 0	▽ = 0	2 PLACES ±	0.25 ± 0.014			CHK'D: ISHWARG 2018/10/05			
▽ = 0	▽ = 0	1 PLACE ±	0.36 ±			APPR: ISHWARG 2018/10/05			
▽ = 0	▽ = 0	0 PLACES ±	±			INITIAL REVISION:			
▽ = 0	▽ = 0	ANGULAR TOL ± 0.5°				DRWN: JJS 1993/02/02			
▽ = 0	▽ = 0	DRAFT WHERE APPLICABLE MUST REMAIN WITHIN DIMENSIONS				APPR: LENZ 1993/02/02			
THIRD ANGLE PROJECTION		DRAWING		SERIES		MATERIAL NUMBER			
D-SIZE		8818		SEE CHART		CUSTOMER			
GENERAL MARKET		1 OF 1							

molex

CRIMP STYLE
KK TYPE, .156 CENTERS W/ANTIFISHOOKING
FEATURE

PRODUCT CUSTOMER DRAWING

DOCUMENT NUMBER	DOC TYPE	DOC PART	REVISION
SD-8818	PSD	001	H2