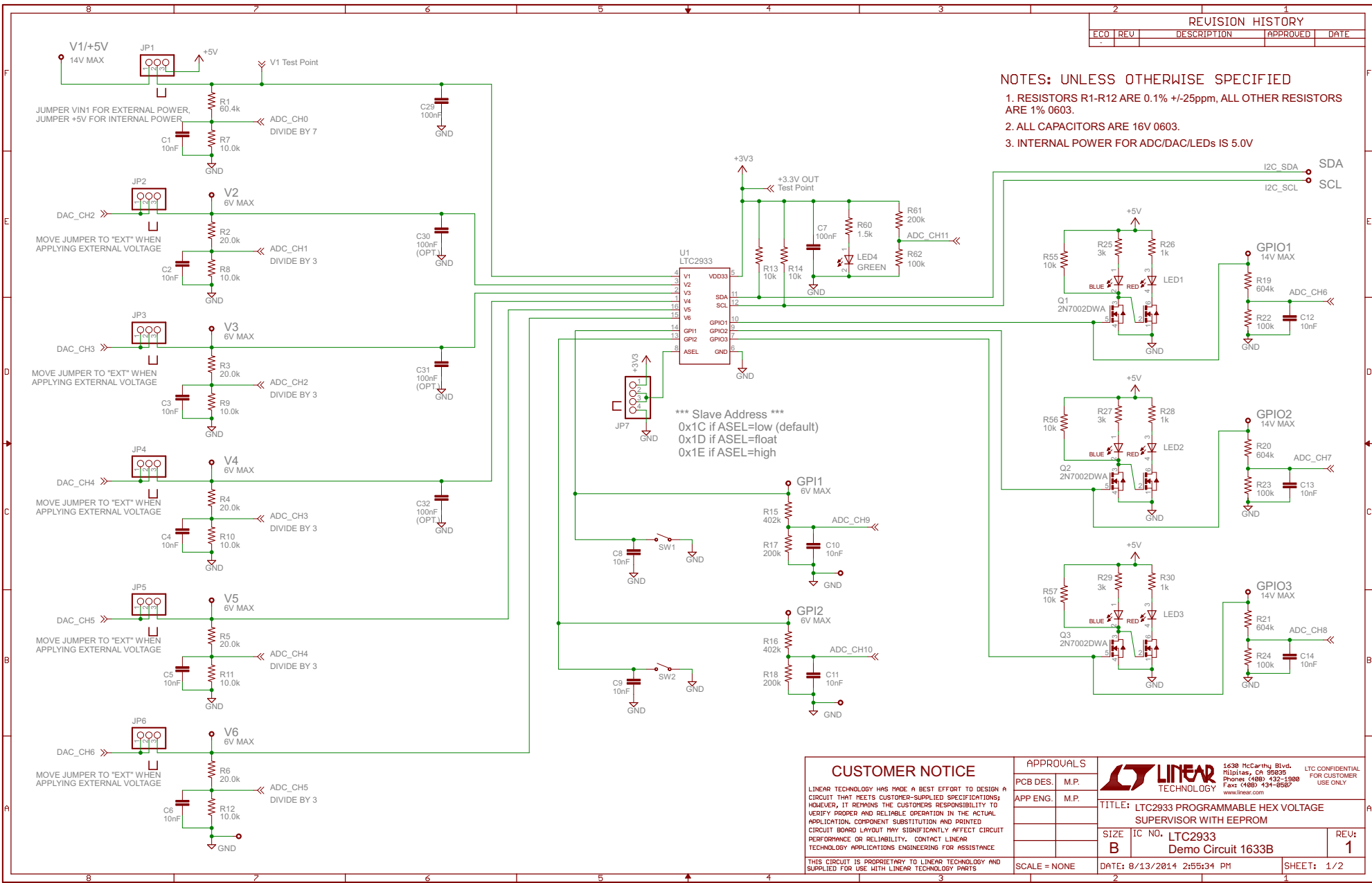


REVISION HISTORY			
ECO	REV	DESCRIPTION	DATE

- NOTES: UNLESS OTHERWISE SPECIFIED
1. RESISTORS R1-R12 ARE 0.1% +/-25ppm, ALL OTHER RESISTORS ARE 1% 0603.
 2. ALL CAPACITORS ARE 16V 0603.
 3. INTERNAL POWER FOR ADC/DAC/LEDs IS 5.0V



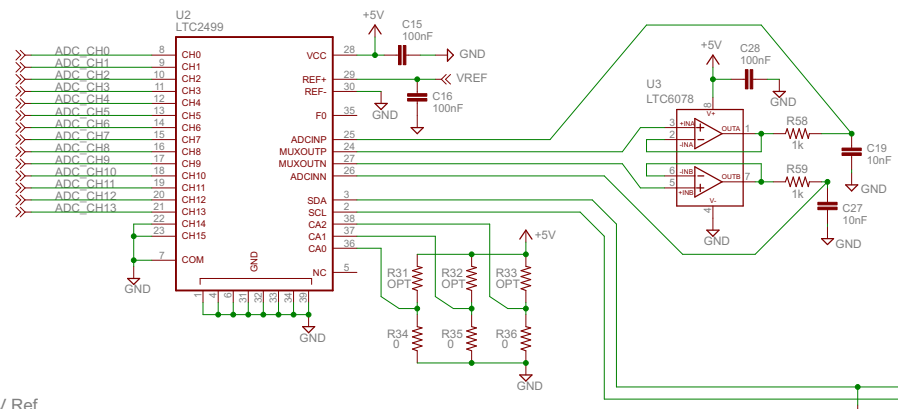
*** Slave Address ***
 0x1C if ASEL=low (default)
 0x1D if ASEL=float
 0x1E if ASEL=high

CUSTOMER NOTICE		APPROVALS			1638 McCarty Blvd. Milpitas, CA 95035 Phone: (408) 432-1980 Fax: (408) 434-9987 www.linear.com	LTC CONFIDENTIAL FOR CUSTOMER USE ONLY	
LINEAR TECHNOLOGY HAS MADE A BEST EFFORT TO DESIGN A CIRCUIT THAT MEETS CUSTOMER-SUPPLIED SPECIFICATIONS; HOWEVER, IT REMAINS THE CUSTOMER'S RESPONSIBILITY TO VERIFY PROPER AND RELIABLE OPERATION IN THE ACTUAL APPLICATION. COMPONENT SUBSTITUTION AND PRINTED CIRCUIT BOARD LAYOUT MAY SIGNIFICANTLY AFFECT CIRCUIT PERFORMANCE OR RELIABILITY. CONTACT LINEAR TECHNOLOGY APPLICATIONS ENGINEERING FOR ASSISTANCE.	THIS CIRCUIT IS PROPRIETARY TO LINEAR TECHNOLOGY AND SUPPLIED FOR USE WITH LINEAR TECHNOLOGY PARTS.	PCB DES.	M.P.				TITLE: LTC2933 PROGRAMMABLE HEX VOLTAGE SUPERVISOR WITH EEPROM
SCALE = NONE		DATE: 8/13/2014 2:55:34 PM		SHEET: 1/2			

REVISION HISTORY			
ECO	REV	DESCRIPTION	DATE

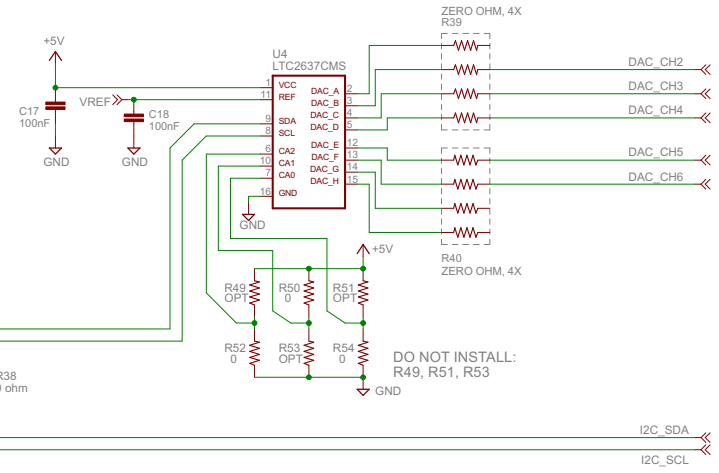
*** Slave Address 0x14 (default) ***
CA2=low, CA1=low, CA0=low

ADC Section

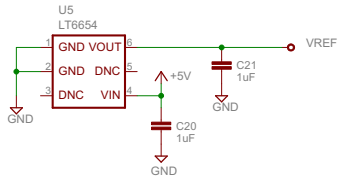


DAC Section

*** Slave Address 0x22 (default) ***
CA2=low, CA1=high, CA0=low



4.096V Ref

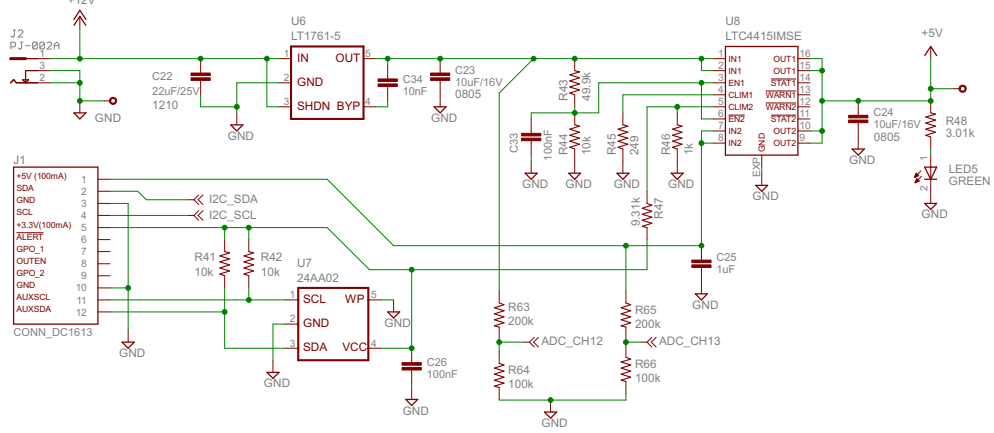


DO NOT INSTALL:
R31, R32, R33

DO NOT INSTALL:
R49, R51, R53

5V LDO to power board
when +12V power present

Diode-OR



NOTES: UNLESS OTHERWISE SPECIFIED:

1. ALL RESISTORS ARE 1% 0603.
2. ALL CAPACITORS ARE 16V 0603.
3. INTERNAL POWER FOR ADC/DAC/LEDs IS 5.0V

CUSTOMER NOTICE		APPROVALS			1538 McCarthy Blvd. Milpitas, CA 95035 Phone (408) 432-1980 Fax (408) 434-9557 www.linear.com	LTC CONFIDENTIAL FOR CUSTOMER USE ONLY
LINEAR TECHNOLOGY HAS MADE A BEST EFFORT TO DESIGN A CIRCUIT THAT MEETS CUSTOMER-SUPPLIED SPECIFICATIONS; HOWEVER, IT REMAINS THE CUSTOMER'S RESPONSIBILITY TO VERIFY PROPER AND RELIABLE OPERATION IN THE ACTUAL APPLICATION. COMPONENT SUBSTITUTION AND PRINTED CIRCUIT BOARD LAYOUT MAY SIGNIFICANTLY AFFECT CIRCUIT PERFORMANCE OR RELIABILITY. CONTACT LINEAR TECHNOLOGY APPLICATIONS ENGINEERING FOR ASSISTANCE.		PCB DES.	M.P.			
THIS CIRCUIT IS PROPRIETARY TO LINEAR TECHNOLOGY AND SUPPLIED FOR USE WITH LINEAR TECHNOLOGY PARTS		APP ENG.	M.P.	SIZE B	IC NO. LTC2933	REV: 1
SCALE = NONE		DATE: 8/13/2014 2:55:34 PM		SHEET: 2/2		