

6

5

4

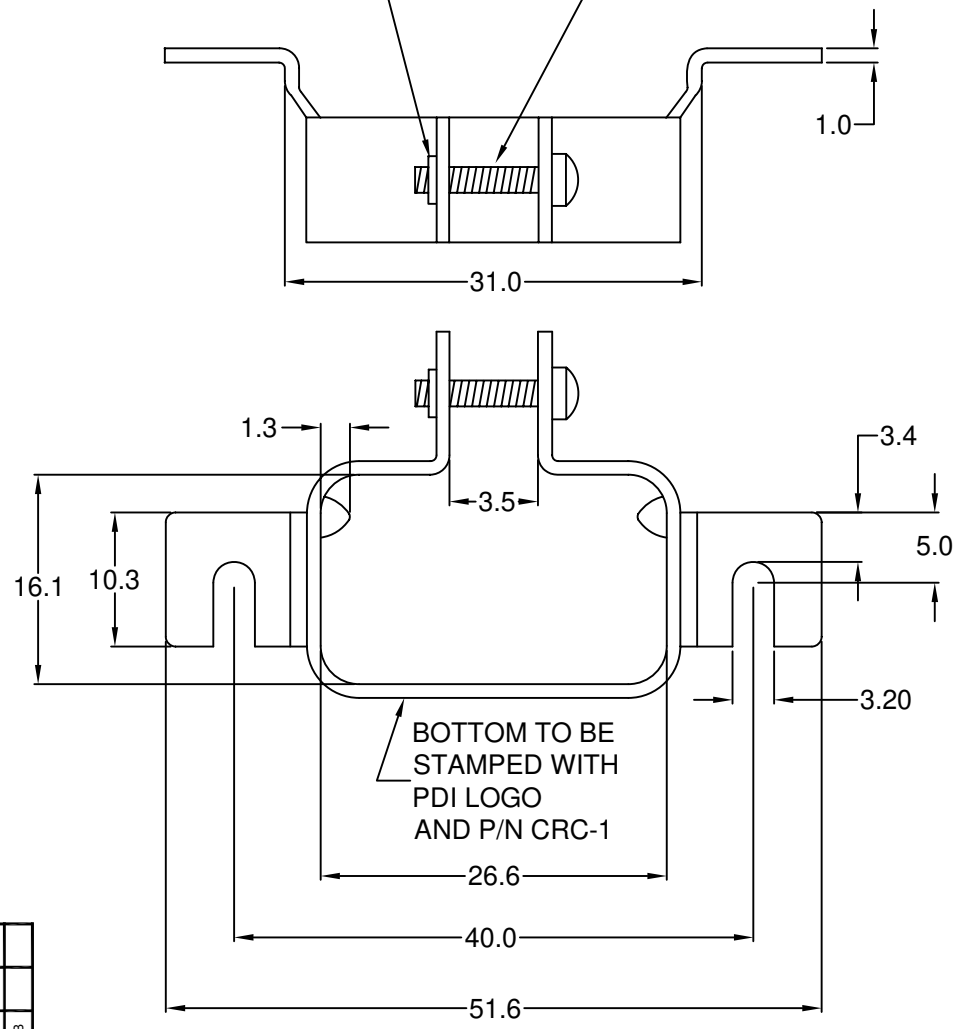
3

2

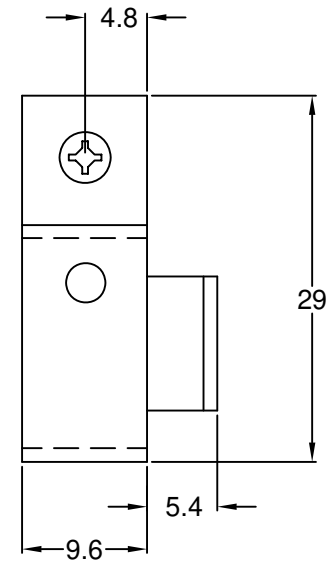
1

THREADED DIMPLE

SCREW, 6-32 x .496" LONG  
BLACK OXIDE



BOTTOM TO BE  
STAMPED WITH  
PDI LOGO  
AND P/N CRC-1



RoHS  
COMPLIANT

NOTES:  
Material: Steel, 1.0mm THK.  
Finish: black oxide finish

BREAK AND DEBURR ALL EDGES

REV	DATE	CHANGE	CHNG				CHK				APPR						
			SLS	TD	SS	JJ	TD	SS	TD	PB	TD	SS	TD	PB			
A	1/89	ADDED 3.5mm RAD.															
B	7/17/00	REVISED															
C	01/02/02	REVISED DRAWING															
D	7/24/02	SCREW IS 4-40x1/2"; DIMPLE															
E	3/24/05	SCREW IS 6-32 X .375"															
F	10/26/09	SCREW LENGTH .496"															

TOLERANCE UNLESS OTHERWISE SPECIFIED	
X	± 1
X.X	± 0.4
X.XX	± 0.20

**Power Dynamics, Inc.**  
Phone: 973 560-0019 Whippany, New Jersey Fax: 973 560-0076

PART: IEC CONNECTOR RETAINING CLAMP  
FOR IEC 60320 C13

DRAWN BY	SLS	DATE:	7/11/97
CHECK BY	TD	DATE:	9/27/99
APPR BY	JJ	DATE:	9/27/99

PART #: <b>CRC-1</b>		ALL DIMENSIONS FOR REFERENCE ONLY DIMENSIONS ARE IN MILLIMETERS	SHEET 1 of 1 REV: <b>F</b>
SIZE:	A		
SCALE:	NTS		