

# FHTxx<sup>\*1)</sup> P5Gy<sup>\*2)</sup>

e.g. FHT09P5G1

\*1) xx No. of contacts 09, 15, 25 or 37

\*2) y for performance classes 1, 2 or 3

(contact cycle for G1/G2/G3 = 500/200/50)

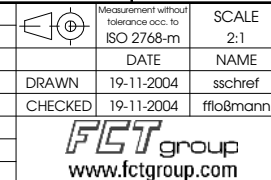
| xx | A (mm) | B (mm) | C (mm) | *øE (mm) | *H (mm) | *J (mm) |
|----|--------|--------|--------|----------|---------|---------|
| 09 | 30,8   | 16,9   | 25     | ø 1      | 9,4     | 2,54    |
| 15 | 39,1   | 25,2   | 33,3   |          |         |         |
| 25 | 53     | 38,9   | 47,04  |          |         |         |
| 37 | 69,3   | 55,3   | 63,5   |          |         |         |

\*PCB hole patterns, øE, H, J on supplement AM0024

| No. | St. | Part           | Type                 | Description/Material | Surface plating/Colour/Class |
|-----|-----|----------------|----------------------|----------------------|------------------------------|
| 4   | 2   | Clinch nut     | FT 4-40 / Steel      |                      | tin plated                   |
| 3   | xx  | Signal contact | P5 / Brass           |                      | G1/G2/G3                     |
| 2   | 1   | Shell          | Steel                |                      | tin plated                   |
| 1   | 1   | Insulator      | PCT (-55°C - +150°C) |                      | natural                      |

| REV. | DATE | CH.-NO. | ORIGINAL: DIN A3-DRAWING AS A FILE | REPLACEMENT FOR: | PAGES |
|------|------|---------|------------------------------------|------------------|-------|
| 1    |      |         |                                    |                  | 1     |

COMMENT: ALL RIGHTS ARE RESERVED BY US FOR THIS DRAWING. WITHOUT OUR PRIOR CONSENT, IT IS NOT TO BE REPRODUCED OR TRANSMITTED IN ANY FORM OR BY ANY MEANS, AND IT ALSO MAY NOT BE IMPROPERLY USED BY THE RECEIVER, OR A THIRD PARTY.



SCALE 2:1  
TITLE D-Sub Miniature Connector  
DWG.NO. FHTxxP5Gy  
REV. 1