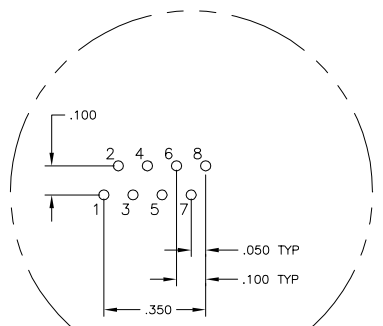
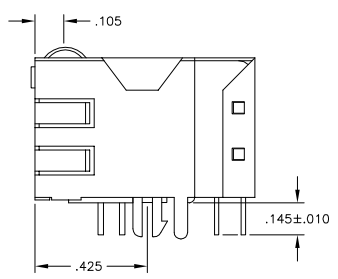
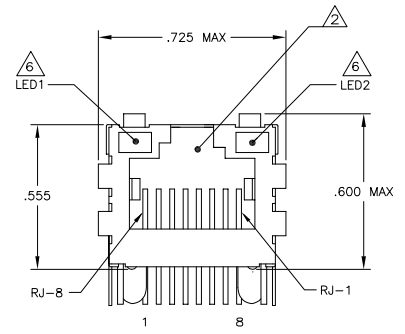
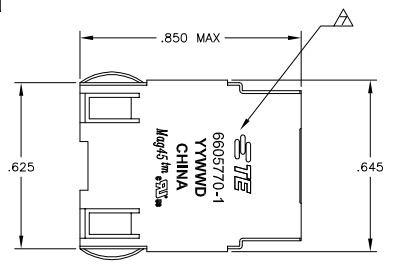
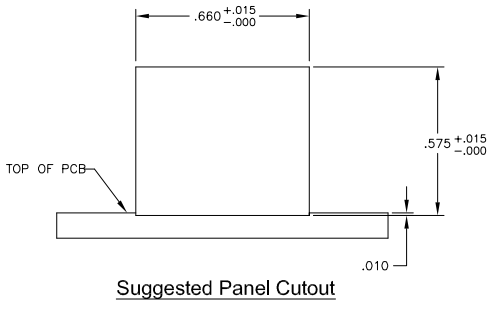


LOC	DATE	REVISIONS	DATE	BY	APP
AA	22				
B		REV PER ECO-08-030026	14OCT2008	VL	TX
B1		REVISED PER ECO-09-024827	10NOV09	KK	AEG
C		ECO-11-015766	30MAY2011	EL	LR

MECHANICAL:

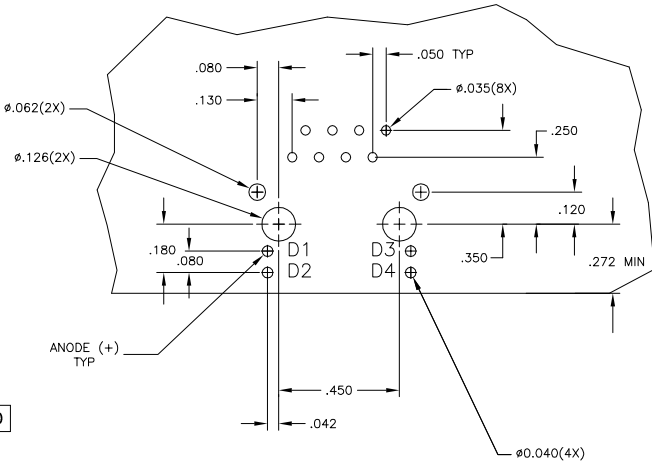
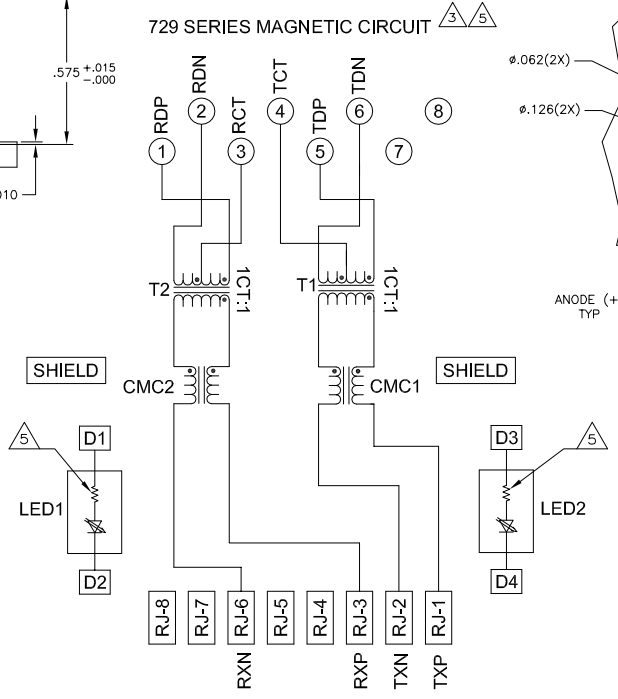


Pin Designations



Suggested Panel Cutout

729 SERIES MAGNETIC CIRCUIT



Suggested PCB Layout (Component Side)

- ⚠️ **MATERIALS:**
 - HOUSING - THERMOPLASTIC PET POLYESTER FLAMMABILITY RATING UL 94V-0.
 - SHIELD - .010" THICK, C26800 BRASS PREPLATED WITH 30μINCH MIN SEMI-BRIGHT NICKEL, SOLDER TABS POST DIPPED WITH 100μINCH MIN SAC SOLDER.
 - MOD JACK CONTACTS - 0.0157" x 0.018" PHOSPHOR BRONZE, 50μINCH MIN OVERALL NICKEL UNDERPLATE, WITH SELECT 50μINCH MIN HARD GOLD FINISH PLATE. SOLDER TAILS WITH 100μINCH MIN MATTE TIN AND/OR SAC SOLDER DIP.
 - LIGHT EMITTING DIODE(LED) - DIFFUSED EPOXY LENS, .020" x .020" CARBON STEEL WIREFRAME LEADS PRE-PLATED WITH 80μINCH SILVER OVER 40μINCH NICKEL UNDERPLATE OVER 40μINCH COPPER UNDERPLATE, POST-PLATED WITH 100μINCH MIN MATTE TIN AND/OR SAC SOLDER DIP OR PURE TIN SOLDER DIP.
- ⚠️ RJ45 JACK CAVITY CONFORMS TO FCC RULES AND REGULATIONS PART 68, SUB PART F.
- ⚠️ **MAGNETICS**
 - APPLICATION: 10 BASE-T
 - IMPEDANCE: 100 OHMS
 - TURNS RATIO (CHP:CABLE): TX = 1:1, RX = 1:1
 - TRANSMIT OPEN CIRCUIT INDUCTANCE (OCL): 14.0μH MIN @ 100kHz, 0.1VRMS
 - LEAKAGE INDUCTANCE (ILL): 0.40μH MAX @ 100kHz, 0.1VRMS
 - INTERWINDING CAPACITANCE (CWW): 15pF MAX @ 100kHz, 0.1VRMS
 - ISOLATION VOLTAGE: 2250VDC (MAX) FOR 60 SECONDS WITH A RISE TIME OF 500V/SEC.
- 4. OPERATING TEMPERATURE: FROM 0°C TO +70°C.
- ⚠️ INDICATED CONNECTIONS ARE FOR NIC CONFIGURATION.
- ⚠️ THE 250 OHM RESISTOR IS INCLUDED IN THE LEDS. LEDS ARE DRIVEN WITH 5V VOLTAGE AND THE MAX OPERATING CURRENT IS 20mA. LED COLOR: DOMINANT WAVELENGTH (λD): GREEN 568 nm TYP @ VF=5V FORWARD CURRENT (IF): GREEN 12mA TYP @ VF=5V DOMINANT WAVELENGTH (λD): YELLOW 588 nm TYP @ VF=5V FORWARD CURRENT (IF): YELLOW 13mA TYP @ VF=5V
- ⚠️ TE CONNECTIVITY LOGO, PART NUMBER, DATE CODE, COUNTRY OF ORIGIN AND AGENCY APPROVAL MARKING IN APPROXIMATE LOCATION SHOWN.
- 8. THESE PARTS ARE RECOMMENDED FOR WAVE SOLDERING PROCESS, PREHEAT TEMPERATURE IS 120°C TO 160°C, 120 SECONDS TO 180 SECONDS, PEAK WAVE SOLDERING TEMPERATURE IS 260°C MAX, 10 SECONDS MAX.
- ⚠️ **OBSOLETE PARTS:** OBSOLETE CIS STREAMLINING PER D.RENAUD/D.SINISI

OBsolete	GREEN	GREEN	6605770-1
	LED1	LED2	PART NUMBER

DIMENSIONS:		DRAWING SPEC:		APPROVALS:		REVISIONS:	
0 P.C.	± .010	DATE	10/22/08	BY	VL	REV	1
1 P.C.	± .010	DATE	10/22/08	BY	KK	REV	2
2 P.C.	± .010	DATE	10/22/08	BY	KK	REV	3
3 P.C.	± .010	DATE	10/22/08	BY	KK	REV	4
4 P.C.	± .010	DATE	10/22/08	BY	KK	REV	5
5 P.C.	± .010	DATE	10/22/08	BY	KK	REV	6
6 P.C.	± .010	DATE	10/22/08	BY	KK	REV	7
7 P.C.	± .010	DATE	10/22/08	BY	KK	REV	8
8 P.C.	± .010	DATE	10/22/08	BY	KK	REV	9
9 P.C.	± .010	DATE	10/22/08	BY	KK	REV	10
10 P.C.	± .010	DATE	10/22/08	BY	KK	REV	11
11 P.C.	± .010	DATE	10/22/08	BY	KK	REV	12
12 P.C.	± .010	DATE	10/22/08	BY	KK	REV	13
13 P.C.	± .010	DATE	10/22/08	BY	KK	REV	14
14 P.C.	± .010	DATE	10/22/08	BY	KK	REV	15
15 P.C.	± .010	DATE	10/22/08	BY	KK	REV	16
16 P.C.	± .010	DATE	10/22/08	BY	KK	REV	17
17 P.C.	± .010	DATE	10/22/08	BY	KK	REV	18
18 P.C.	± .010	DATE	10/22/08	BY	KK	REV	19
19 P.C.	± .010	DATE	10/22/08	BY	KK	REV	20
20 P.C.	± .010	DATE	10/22/08	BY	KK	REV	21
21 P.C.	± .010	DATE	10/22/08	BY	KK	REV	22
22 P.C.	± .010	DATE	10/22/08	BY	KK	REV	23
23 P.C.	± .010	DATE	10/22/08	BY	KK	REV	24
24 P.C.	± .010	DATE	10/22/08	BY	KK	REV	25
25 P.C.	± .010	DATE	10/22/08	BY	KK	REV	26
26 P.C.	± .010	DATE	10/22/08	BY	KK	REV	27
27 P.C.	± .010	DATE	10/22/08	BY	KK	REV	28
28 P.C.	± .010	DATE	10/22/08	BY	KK	REV	29
29 P.C.	± .010	DATE	10/22/08	BY	KK	REV	30
30 P.C.	± .010	DATE	10/22/08	BY	KK	REV	31
31 P.C.	± .010	DATE	10/22/08	BY	KK	REV	32
32 P.C.	± .010	DATE	10/22/08	BY	KK	REV	33
33 P.C.	± .010	DATE	10/22/08	BY	KK	REV	34
34 P.C.	± .010	DATE	10/22/08	BY	KK	REV	35
35 P.C.	± .010	DATE	10/22/08	BY	KK	REV	36
36 P.C.	± .010	DATE	10/22/08	BY	KK	REV	37
37 P.C.	± .010	DATE	10/22/08	BY	KK	REV	38
38 P.C.	± .010	DATE	10/22/08	BY	KK	REV	39
39 P.C.	± .010	DATE	10/22/08	BY	KK	REV	40
40 P.C.	± .010	DATE	10/22/08	BY	KK	REV	41
41 P.C.	± .010	DATE	10/22/08	BY	KK	REV	42
42 P.C.	± .010	DATE	10/22/08	BY	KK	REV	43
43 P.C.	± .010	DATE	10/22/08	BY	KK	REV	44
44 P.C.	± .010	DATE	10/22/08	BY	KK	REV	45
45 P.C.	± .010	DATE	10/22/08	BY	KK	REV	46
46 P.C.	± .010	DATE	10/22/08	BY	KK	REV	47
47 P.C.	± .010	DATE	10/22/08	BY	KK	REV	48
48 P.C.	± .010	DATE	10/22/08	BY	KK	REV	49
49 P.C.	± .010	DATE	10/22/08	BY	KK	REV	50
50 P.C.	± .010	DATE	10/22/08	BY	KK	REV	51
51 P.C.	± .010	DATE	10/22/08	BY	KK	REV	52
52 P.C.	± .010	DATE	10/22/08	BY	KK	REV	53
53 P.C.	± .010	DATE	10/22/08	BY	KK	REV	54
54 P.C.	± .010	DATE	10/22/08	BY	KK	REV	55
55 P.C.	± .010	DATE	10/22/08	BY	KK	REV	56
56 P.C.	± .010	DATE	10/22/08	BY	KK	REV	57
57 P.C.	± .010	DATE	10/22/08	BY	KK	REV	58
58 P.C.	± .010	DATE	10/22/08	BY	KK	REV	59
59 P.C.	± .010	DATE	10/22/08	BY	KK	REV	60
60 P.C.	± .010	DATE	10/22/08	BY	KK	REV	61
61 P.C.	± .010	DATE	10/22/08	BY	KK	REV	62
62 P.C.	± .010	DATE	10/22/08	BY	KK	REV	63
63 P.C.	± .010	DATE	10/22/08	BY	KK	REV	64
64 P.C.	± .010	DATE	10/22/08	BY	KK	REV	65
65 P.C.	± .010	DATE	10/22/08	BY	KK	REV	66
66 P.C.	± .010	DATE	10/22/08	BY	KK	REV	67
67 P.C.	± .010	DATE	10/22/08	BY	KK	REV	68
68 P.C.	± .010	DATE	10/22/08	BY	KK	REV	69
69 P.C.	± .010	DATE	10/22/08	BY	KK	REV	70
70 P.C.	± .010	DATE	10/22/08	BY	KK	REV	71
71 P.C.	± .010	DATE	10/22/08	BY	KK	REV	72
72 P.C.	± .010	DATE	10/22/08	BY	KK	REV	73
73 P.C.	± .010	DATE	10/22/08	BY	KK	REV	74
74 P.C.	± .010	DATE	10/22/08	BY	KK	REV	75
75 P.C.	± .010	DATE	10/22/08	BY	KK	REV	76
76 P.C.	± .010	DATE	10/22/08	BY	KK	REV	77
77 P.C.	± .010	DATE	10/22/08	BY	KK	REV	78
78 P.C.	± .010	DATE	10/22/08	BY	KK	REV	79
79 P.C.	± .010	DATE	10/22/08	BY	KK	REV	80
80 P.C.	± .010	DATE	10/22/08	BY	KK	REV	81
81 P.C.	± .010	DATE	10/22/08	BY	KK	REV	82
82 P.C.	± .010	DATE	10/22/08	BY	KK	REV	83
83 P.C.	± .010	DATE	10/22/08	BY	KK	REV	84
84 P.C.	± .010	DATE	10/22/08	BY	KK	REV	85
85 P.C.	± .010	DATE	10/22/08	BY	KK	REV	86
86 P.C.	± .010	DATE	10/22/08	BY	KK	REV	87
87 P.C.	± .010	DATE	10/22/08	BY	KK	REV	88
88 P.C.	± .010	DATE	10/22/08	BY	KK	REV	89
89 P.C.	± .010	DATE	10/22/08	BY	KK	REV	90
90 P.C.	± .010	DATE	10/22/08	BY	KK	REV	91
91 P.C.	± .010	DATE	10/22/08	BY	KK	REV	92
92 P.C.	± .010	DATE	10/22/08	BY	KK	REV	93
93 P.C.	± .010	DATE	10/22/08	BY	KK	REV	94
94 P.C.	± .010	DATE	10/22/08	BY	KK	REV	95
95 P.C.	± .010	DATE	10/22/08	BY	KK	REV	96
96 P.C.	± .010	DATE	10/22/08	BY	KK	REV	97
97 P.C.	± .010	DATE	10/22/08	BY	KK	REV	98
98 P.C.	± .010	DATE	10/22/08	BY	KK	REV	99
99 P.C.	± .010	DATE	10/22/08	BY	KK	REV	100