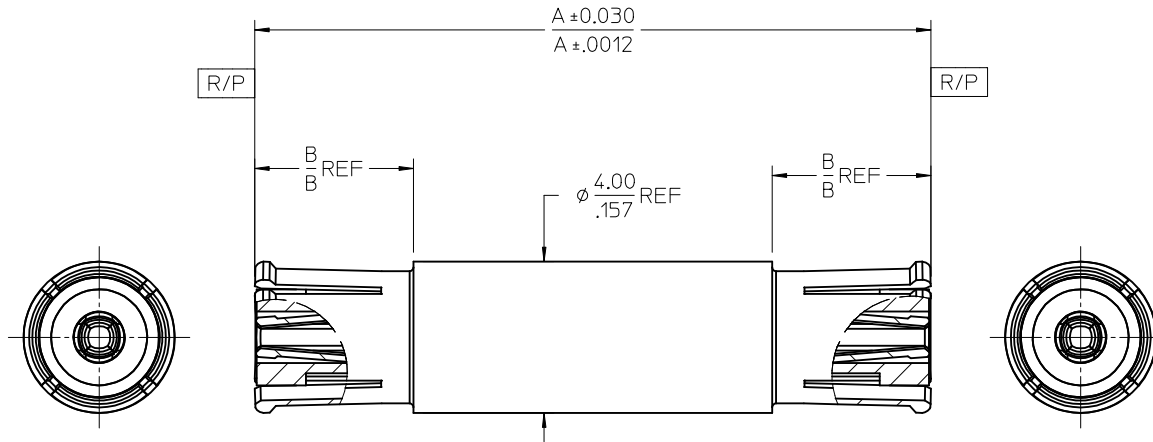
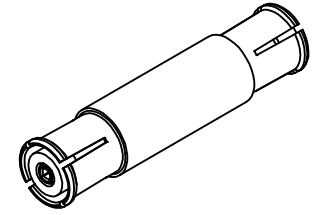


MATERIALS AND FINISHES:

BODY: BERYLLIUM COPPER
PLATED: SEE TABLE

INSULATOR: PTFE

CONTACT: BERYLLIUM COPPER
PLATED: GOLD (8μ-in MIN)
OVER NICKEL PHOSPHOR (80μ-in MIN)



NOTE:

RATED VOLTAGE: 1000 Vrms

ELECTRICAL

1.07 / -30dB	1.09 / -27 dB	1.14 / -24 dB
DC - 2 GHz	2 - 4 GHz	4 - 6 GHz
VSWR / RL		

NOTE: ABOVE DATA ARE FOR INDIVIDUAL CONNECTOR.

73420-5366	TRI-M3	TRAY, 80 PCS
73420-5365	TRI-M3	TRAY, 80 PCS
73420-5364	GOLD (1μ-in MIN) OVER NICKEL PHOSPHOR (80μ-in MIN)	SMALL TRAY, 20 PCS
73420-5363	TRI-M3	SMALL TRAY, 20 PCS
73420-5362	GOLD (8μ-in MIN) OVER NICKEL PHOSPHOR (80μ-in MIN)	TRAY, 54 PCS
73420-5361	GOLD (1μ-in MIN) OVER NICKEL PHOSPHOR (80μ-in MIN)	TRAY, 80 PCS
73420-5360	TRI-M3	TRAY, 80 PCS
PART NO.	DESCRIPTION, BODY FINISH	PACKAGING

73420-5366	15.60/.614	5.00/.197
73420-5365	14.90/.587	4.20/.165
73420-5364	11.35/.447	4.20/.165
73420-5363	17.90/.705	4.20/.165
73420-5362	49.15/1.935	4.20/.165
73420-5361	11.35/.447	4.20/.165
73420-5360	17.90/.705	4.20/.165
PART NO	DIM A (MM/IN)	DIM B (MM/IN)

PS-89675-3760	ELEC/MECH PERFORMANCE
SPECIFICATION	DESCRIPTION

CHG: ADD TOLERANCE TO DIM A IN IZ ZONE. UPD MATERIALS AND FINISHES NOTE. DRWIN:APRAKASH01 2017/07/07 IEC NO: URF-2018-0002 2017/07/07 CHKD:888 2017/07/07 APPR:AROBERTSON 2017/08/16	QUALITY SYMBOLS
	▽=0
	▽=0
	▽=0
REV	DESCRIPTION
A7	

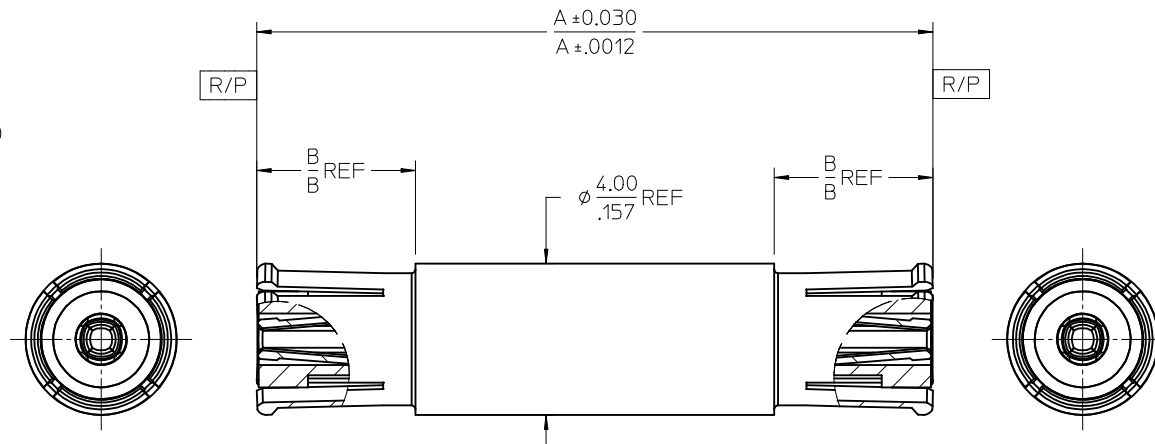
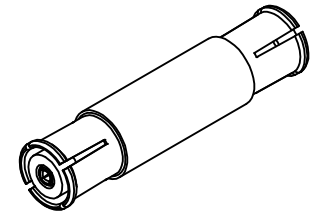
GENERAL TOLERANCES (UNLESS SPECIFIED)	DIMENSION STYLE		SCALE	DESIGN UNITS	THIRD ANGLE PROJECTION
	mm	INCH	MM/IN	METRIC	
4 PLACES ± --- ± ---	DRAWN BY		DATE	TITLE	
3 PLACES ± --- ± .010	RYEH		2012/12/21	SMP-MAX JACK/JACK BULLET	
2 PLACES ± 0.25 ± ---	CHECKED BY		DATE	FEMALE TO FEMALE 4 SLOTS	
1 PLACE ± --- ± ---	JOANNE		2012/12/21	SMPMAX-BULLET	
0 PLACE ± --- ± ---	APPROVED BY		DATE	molex	
ANGULAR ± 2 °		MATERIAL NO.			
DRAFT WHERE APPLICABLE MUST REMAIN WITHIN DIMENSIONS		SEE TABLE		SD-73420-536	1 OF 1
THIS DRAWING CONTAINS INFORMATION THAT IS PROPRIETARY TO MOLEX INCORPORATED AND SHOULD NOT BE USED WITHOUT WRITTEN PERMISSION					

MATERIALS AND FINISHES:

BODY: BERYLLIUM COPPER
 PLATED: SEE TABLE

INSULATOR: PTFE

CONTACT: BERYLLIUM COPPER
 PLATED: GOLD (8μ-in MIN)
 OVER NICKEL PHOSPHOR (80μ-in MIN)



NOTE:

RATED VOLTAGE: 1000 Vrms

ELECTRICAL

1.07 / -30dB	1.09 / -27 dB	1.14 / -24 dB
DC - 2 GHz	2 - 4 GHz	4 - 6 GHz
VSWR / RL		

NOTE: ABOVE DATA ARE FOR INDIVIDUAL CONNECTOR.

73420-5366	TRI-M3	TRAY, 80 PCS
73420-5365	TRI-M3	TRAY, 80 PCS
73420-5364	GOLD (1μ-in MIN) OVER NICKEL PHOSPHOR (80μ-in MIN)	SMALL TRAY, 20 PCS
73420-5363	TRI-M3	SMALL TRAY, 20 PCS
73420-5362	GOLD (8μ-in MIN) OVER NICKEL PHOSPHOR (80μ-in MIN)	TRAY, 54 PCS
73420-5361	GOLD (1μ-in MIN) OVER NICKEL PHOSPHOR (80μ-in MIN)	TRAY, 80 PCS
73420-5360	TRI-M3	TRAY, 80 PCS
PART NO.	DESCRIPTION, BODY FINISH	PACKAGING

73420-5366	15.60/.614	5.00/.197
73420-5365	14.90/.587	4.20/.165
73420-5364	11.35/.447	4.20/.165
73420-5363	17.90/.705	4.20/.165
73420-5362	49.15/1.935	4.20/.165
73420-5361	11.35/.447	4.20/.165
73420-5360	17.90/.705	4.20/.165
PART NO	DIM A (MM/IN)	DIM B (MM/IN)

PS-89675-3760	ELEC/MECH PERFORMANCE
SPECIFICATION	DESCRIPTION

CHG: ADD TOLERANCE TO DIM A IN IZ ZONE. UPD MATERIALS AND FINISHES NOTE. EC NO: URF-2018-0002 DRWIN: PRAKASH01 2017/07/07 CHKD: 888 2017/07/07 APPR: AROBERTSON 2017/08/16	QUALITY SYMBOLS
	∇=0 ∇=0 ∇=0
	DESCRIPTION
	REV: A7

GENERAL TOLERANCES (UNLESS SPECIFIED)	DIMENSION STYLE MM/IN	SCALE	DESIGN UNITS METRIC	THIRD ANGLE PROJECTION
4 PLACES ± --- ± --- 3 PLACES ± --- ± .010 2 PLACES ± 0.25 ± --- 1 PLACE ± --- ± --- 0 PLACE ± --- ± ---	DRAWN BY RYEH DATE 2012/12/21 CHECKED BY JOANNE DATE 2012/12/21 APPROVED BY DATE	TITLE	SMP-MAX JACK/JACK BULLET FEMALE TO FEMALE 4 SLOTS SMPMAX-BULLET molex	
ANGULAR ± 2 °	MATERIAL NO. SEE TABLE	DOCUMENT NO. SD-73420-536	SHEET NO. 1 OF 1	
DRAFT WHERE APPLICABLE MUST REMAIN WITHIN DIMENSIONS THIS DRAWING CONTAINS INFORMATION THAT IS PROPRIETARY TO MOLEX INCORPORATED AND SHOULD NOT BE USED WITHOUT WRITTEN PERMISSION				