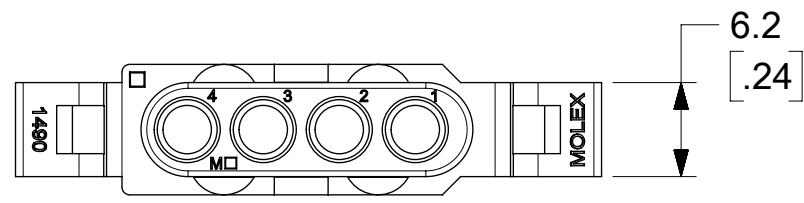
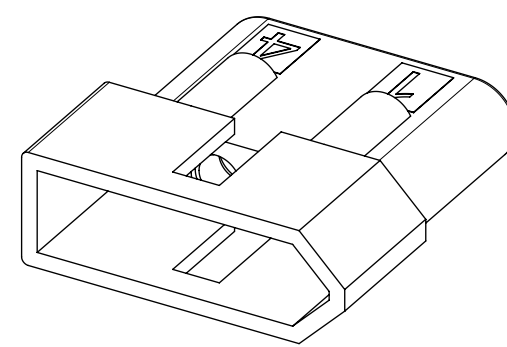
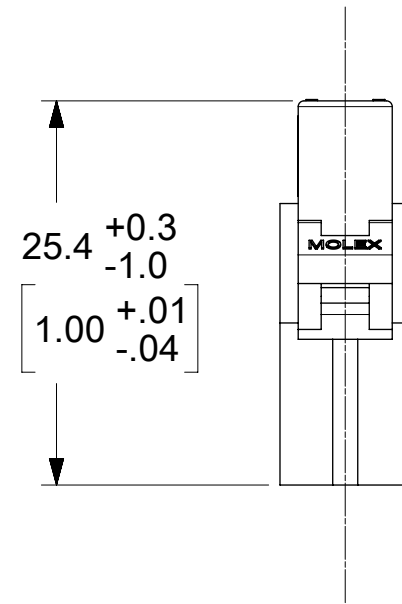
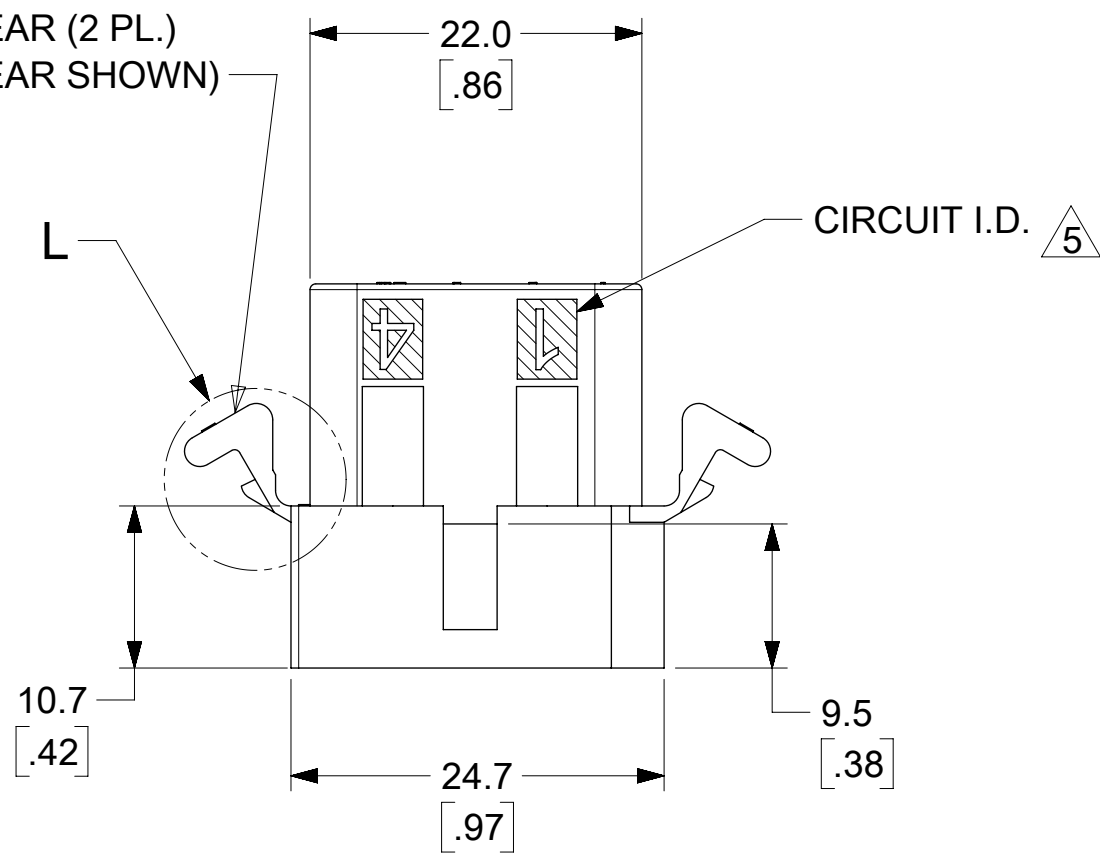


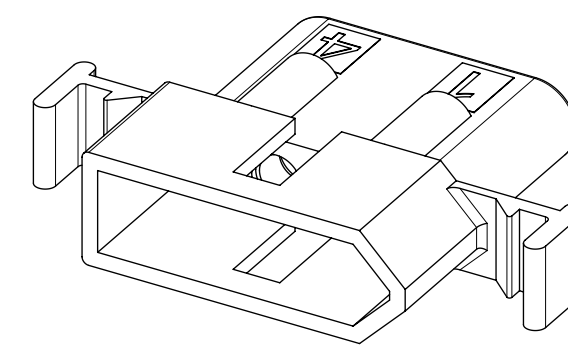
# PLUG



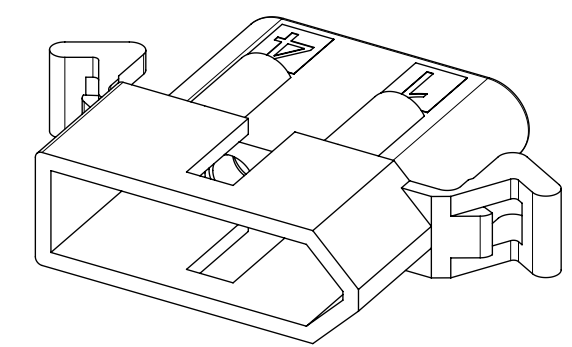
OPTIONAL MOUNTING EAR (2 PL.)  
(PREBENT MOUNTING EAR SHOWN)  
SEE DETAIL K OR L



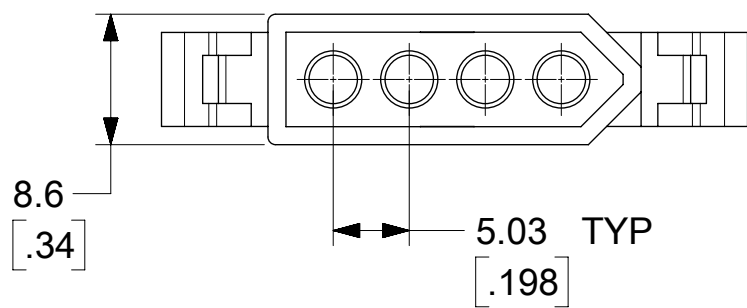
PLUG HOUSING WITHOUT EARS



PLUG HOUSING WITH STANDARD EARS



PLUG HOUSING WITH PREBENT EARS



SYMBOLS	THIS DRAWING CONTAINS INFORMATION THAT IS PROPRIETARY TO MOLEX ELECTRONIC TECHNOLOGIES, LLC AND SHOULD NOT BE USED WITHOUT WRITTEN PERMISSION									
	DIMENSION UNITS		SCALE		CURRENT REV DESC: ADD CAVITY ID					
∇ = 0	MM/IN		2:1		EC NO: 173421 DRWN: MKIPPER 2018/03/07 CHK'D: JBELL 2018/03/12 APPR: FSMITH 2018/03/16					
∇ = 0	GENERAL TOLERANCES (UNLESS SPECIFIED)									
∇ = 0			MM	INCH	INITIAL REVISION: DRWN: CSLAFTER 2017/01/17 APPR: FSMITH 2017/01/29					
S = 0	4 PLACES	±								
∇ = 0	3 PLACES	±		0.01	PRODUCT CUSTOMER DRAWING DOCUMENT NUMBER: 14900000-SD DOC TYPE: PSD DOC PART: 000 REVISION: A1					
∇ = 0	2 PLACES	±	0.25	0.014						
∇ = 0	1 PLACE	±	0.35		MATERIAL NUMBER: SEE CHART CUSTOMER: GENERAL MARKET SHEET NUMBER: 1 OF 3					
∇ = 0	0 PLACES	±								
∇ = 0	ANGULAR TOL ± 0.5°		THIRD ANGLE PROJECTION		DRAWING	SERIES	MATERIAL NUMBER			CUSTOMER
∇ = 0	DRAFT WHERE APPLICABLE MUST REMAIN WITHIN DIMENSIONS				C-SIZE	1490	SEE CHART			GENERAL MARKET

**molex**

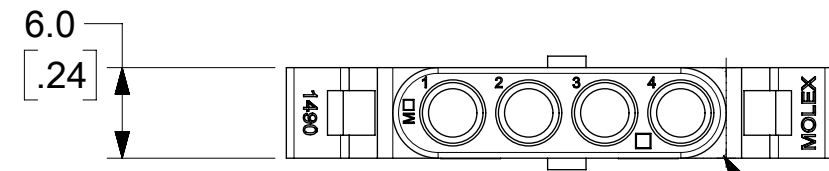
.093/(2.36) HOUSINGS PLUG AND RECEPTACLE

PRODUCT CUSTOMER DRAWING

DOCUMENT NUMBER: 14900000-SD  
DOC TYPE: PSD  
DOC PART: 000  
REVISION: A1

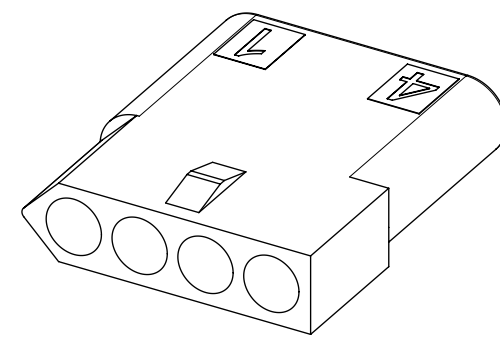
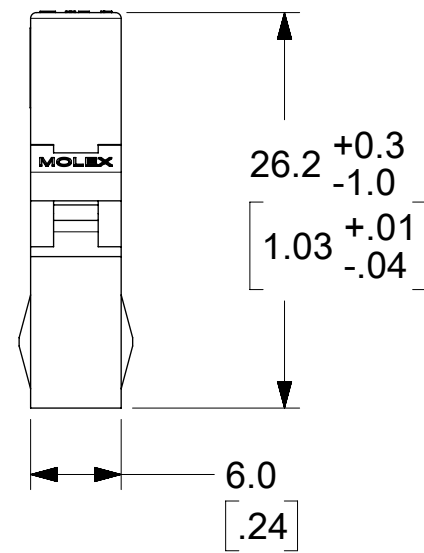
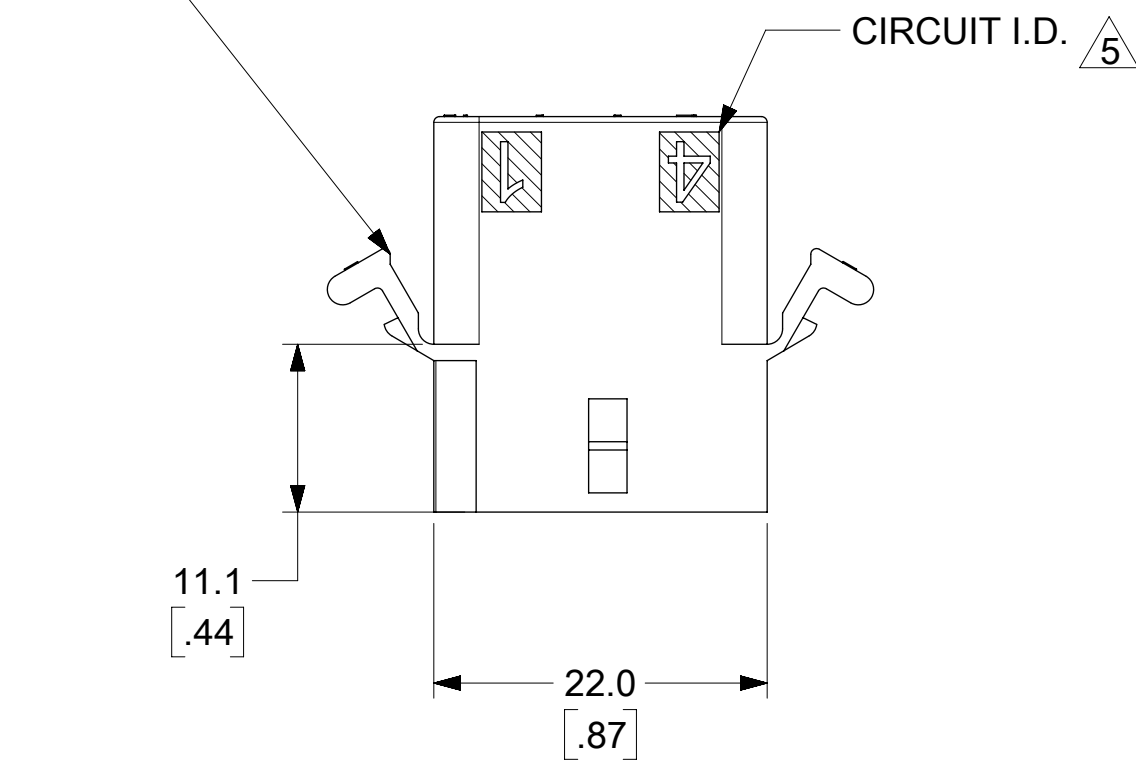
MATERIAL NUMBER: SEE CHART  
CUSTOMER: GENERAL MARKET  
SHEET NUMBER: 1 OF 3

# RECEPTACLE

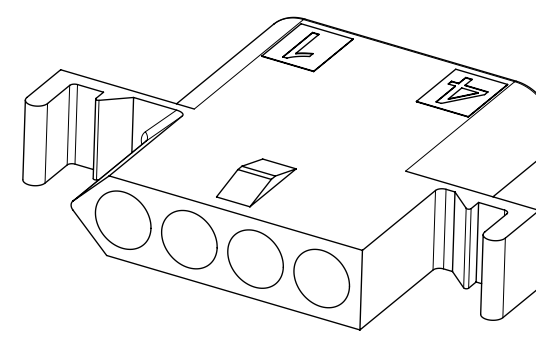


HOUSING MAY HAVE FULL RADIUS OR RADIUSED CORNERS.

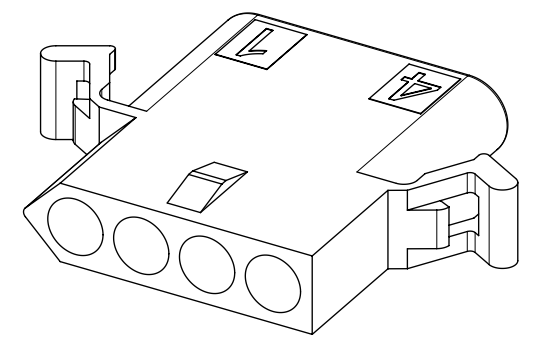
OPTIONAL MOUNTING EAR (2 PL.)  
(PREBENT MOUNTING EAR SHOWN)  
SEE DETAIL K OR L



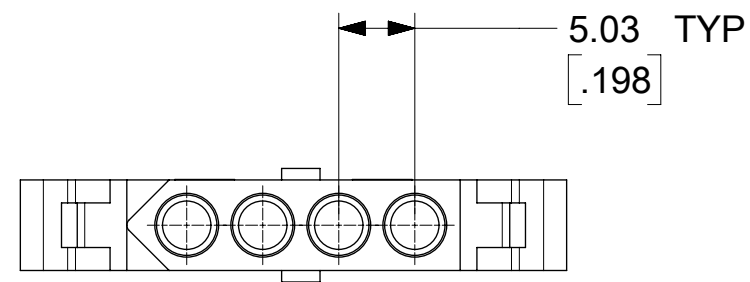
RECEPTACLE HOUSING WITHOUT EARS



RECEPTACLE HOUSING WITH STANDARD EARS



RECEPTACLE HOUSING WITH PREBENT EARS



THIS DRAWING CONTAINS INFORMATION THAT IS PROPRIETARY TO MOLEX ELECTRONIC TECHNOLOGIES, LLC AND SHOULD NOT BE USED WITHOUT WRITTEN PERMISSION													
SYMBOLS		DIMENSION UNITS		SCALE		CURRENT REV DESC: ADD CAVITY ID							
∇ = 0	∇ = 0	MM/IN	2:1			<b>molex</b> .093/(2.36) HOUSINGS PLUG AND RECEPTACLE PRODUCT CUSTOMER DRAWING							
∇ = 0	∇ = 0	GENERAL TOLERANCES (UNLESS SPECIFIED)											
S = 0	∇ = 0	4 PLACES	±	MM	INCH	EC NO: 173421	2018/03/07						
∇ = 0	∇ = 0	3 PLACES	±	±	0.01	DRWN: MKIPPER	2018/03/12						
∇ = 0	∇ = 0	2 PLACES	±	0.25	±	0.014	CHK'D: JBELL	2018/03/16					
∇ = 0	∇ = 0	1 PLACE	±	0.35	±		APPR: FSMITH						
∇ = 0	∇ = 0	0 PLACES	±	±		INITIAL REVISION:							
∇ = 0	∇ = 0	ANGULAR TOL	±	0.5°		DRWN: CSLAFTER	2017/01/17						
∇ = 0	∇ = 0	DRAFT WHERE APPLICABLE MUST REMAIN WITHIN DIMENSIONS		THIRD ANGLE PROJECTION		DRAWING	SERIES	MATERIAL NUMBER	CUSTOMER	DOC TYPE	DOC PART	REVISION	SHEET NUMBER
						C-SIZE	1490	14900000-SD	GENERAL MARKET	PSD	000	A1	2 OF 3

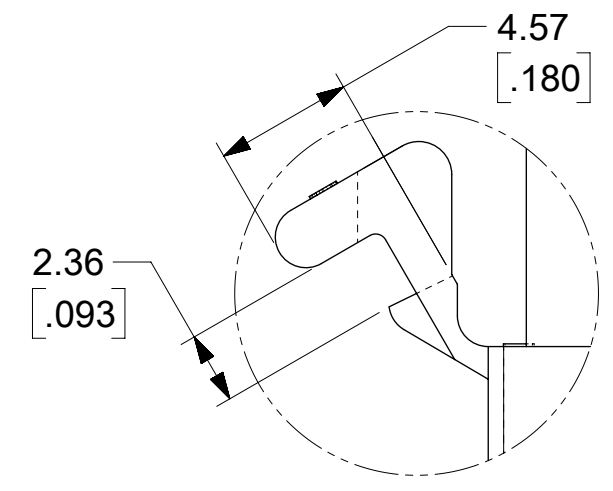
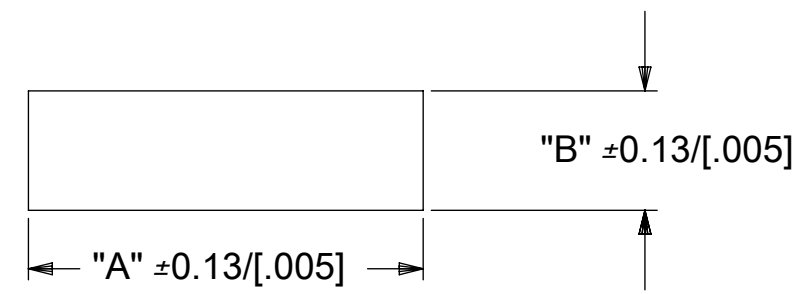
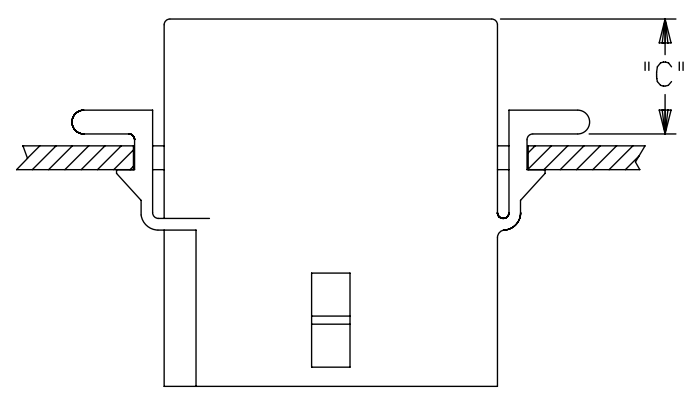
PLUG		RECEPTACLE	
PART NO.	ENG. NO.	PART NO.	ENG. NO.
03-09-2041	1490-P	03-09-1041	1490-R
03-09-2042	1490-P1	03-09-1042	1490-R1
46999-0811	1490-P2	03-09-1043	1490-R2

**LEGEND**

1490 - \*\*\*  
 P = PLUG  
 R = RECEPTACLE

BLANK = WITH STANDARD EARS  
 1 = WITHOUT EARS  
 2 = WITH PREBENT EARS, PER DETAIL L

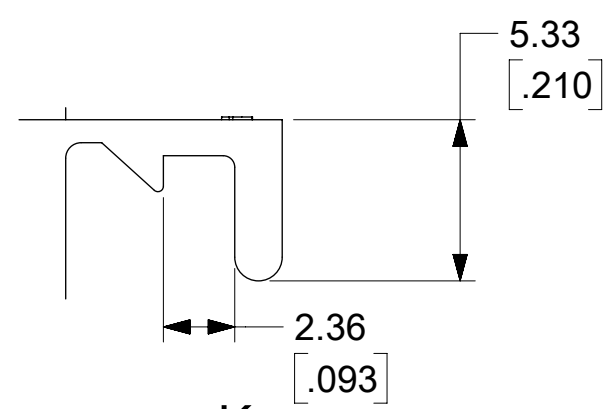
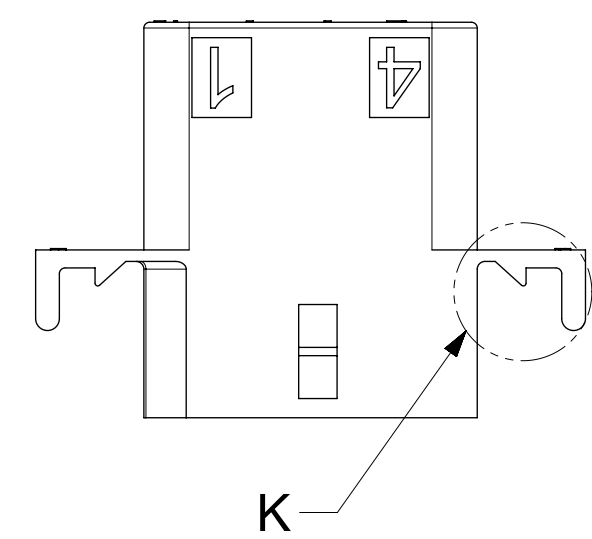
COLOR: BLANK = NATURAL COLOR  
 AM = AMBER BK = BLACK BU = BLUE  
 BN = BROWN GY = GRAY GN = GREEN  
 OR = ORANGE RD = RED YW = YELLOW



DETAIL L  
 SCALE 4:1  
 2.36[.093] PREBENT MOUNTING EAR

HOUSING	DIMENSION "A"	DIMENSION "B"	DIMENSION "C"
PLUG	28.73/[1.131]	9.52[.375]	9.1[.36]
RECEPTACLE	26.36/[1.038]	7.92[.312]	9.4[.37]

- NOTES:
- MATERIAL: NYLON 6/6 94V-2, COLOR: SEE LEGEND
  - FINISH: NOT APPLICABLE
  - PRODUCT SPECIFICATION: PS-43660-9999
  - PACKAGING SPECIFICATION: PK-1490-001
  - ETCHED CIRCUIT I.D. NUMBERS ON HOUSING SIDE MAY OR MAY NOT BE PRESENT.
  - PARTS CONFORM TO CLASS B REQUIREMENTS OF COSMETIC SPECIFICATION PS-45499-002.
  - TEXT ON PART IS FOR REFERENCE ONLY. TEXT AND TEXT LOCATION MAY VARY DEPENDING ON PART NUMBER AND/OR TOOLING.
  - THIS DRAWING REPLACES SD-1490-\*



DETAIL K  
 SCALE 4:1  
 2.36/(.093) STANDARD MOUNTING EAR

<b>SYMBOLS</b> 	THIS DRAWING CONTAINS INFORMATION THAT IS PROPRIETARY TO MOLEX ELECTRONIC TECHNOLOGIES, LLC AND SHOULD NOT BE USED WITHOUT WRITTEN PERMISSION																				
	DIMENSION UNITS: <b>MM/IN</b> SCALE: <b>2:1</b>		CURRENT REV DESC: ADD CAVITY ID																		
	GENERAL TOLERANCES (UNLESS SPECIFIED)		EC NO: 173421 DRWN: MKIPPER 2018/03/07 CHK'D: JBELL 2018/03/12 APPR: FSMITH 2018/03/16																		
	<table border="1"> <tr><th></th><th>MM</th><th>INCH</th></tr> <tr><td>4 PLACES</td><td>±</td><td>±</td></tr> <tr><td>3 PLACES</td><td>±</td><td>± 0.01</td></tr> <tr><td>2 PLACES</td><td>± 0.25</td><td>± 0.014</td></tr> <tr><td>1 PLACE</td><td>± 0.35</td><td>±</td></tr> <tr><td>0 PLACES</td><td>±</td><td>±</td></tr> </table>			MM	INCH	4 PLACES	±	±	3 PLACES	±	± 0.01	2 PLACES	± 0.25	± 0.014	1 PLACE	± 0.35	±	0 PLACES	±	±	INITIAL REVISION: DRWN: CSLAFTER 2017/01/17 APPR: FSMITH 2017/01/29
	MM	INCH																			
4 PLACES	±	±																			
3 PLACES	±	± 0.01																			
2 PLACES	± 0.25	± 0.014																			
1 PLACE	± 0.35	±																			
0 PLACES	±	±																			
DRAFT WHERE APPLICABLE MUST REMAIN WITHIN DIMENSIONS	THIRD ANGLE PROJECTION	DRAWING: <b>C-SIZE</b>	SERIES: <b>1490</b>	<table border="1"> <tr> <td>DOCUMENT NUMBER</td> <td>DOC TYPE</td> <td>DOC PART</td> <td>REVISION</td> </tr> <tr> <td><b>14900000-SD</b></td> <td><b>PSD</b></td> <td><b>000</b></td> <td><b>A1</b></td> </tr> </table>	DOCUMENT NUMBER	DOC TYPE	DOC PART	REVISION	<b>14900000-SD</b>	<b>PSD</b>	<b>000</b>	<b>A1</b>									
DOCUMENT NUMBER	DOC TYPE	DOC PART	REVISION																		
<b>14900000-SD</b>	<b>PSD</b>	<b>000</b>	<b>A1</b>																		
DOCUMENT STATUS: <b>P1</b>	RELEASE DATE: <b>2018/03/16 16:02:49</b>	MATERIAL NUMBER: <b>SEE CHART</b>	CUSTOMER: <b>GENERAL MARKET</b>	SHEET NUMBER: <b>3 OF 3</b>																	