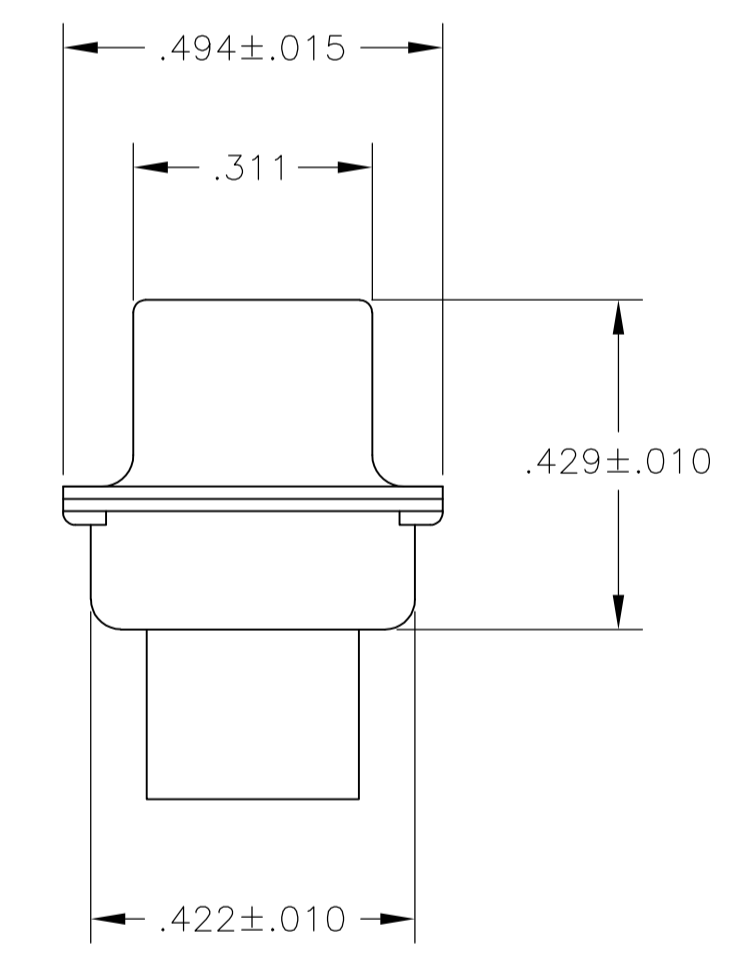
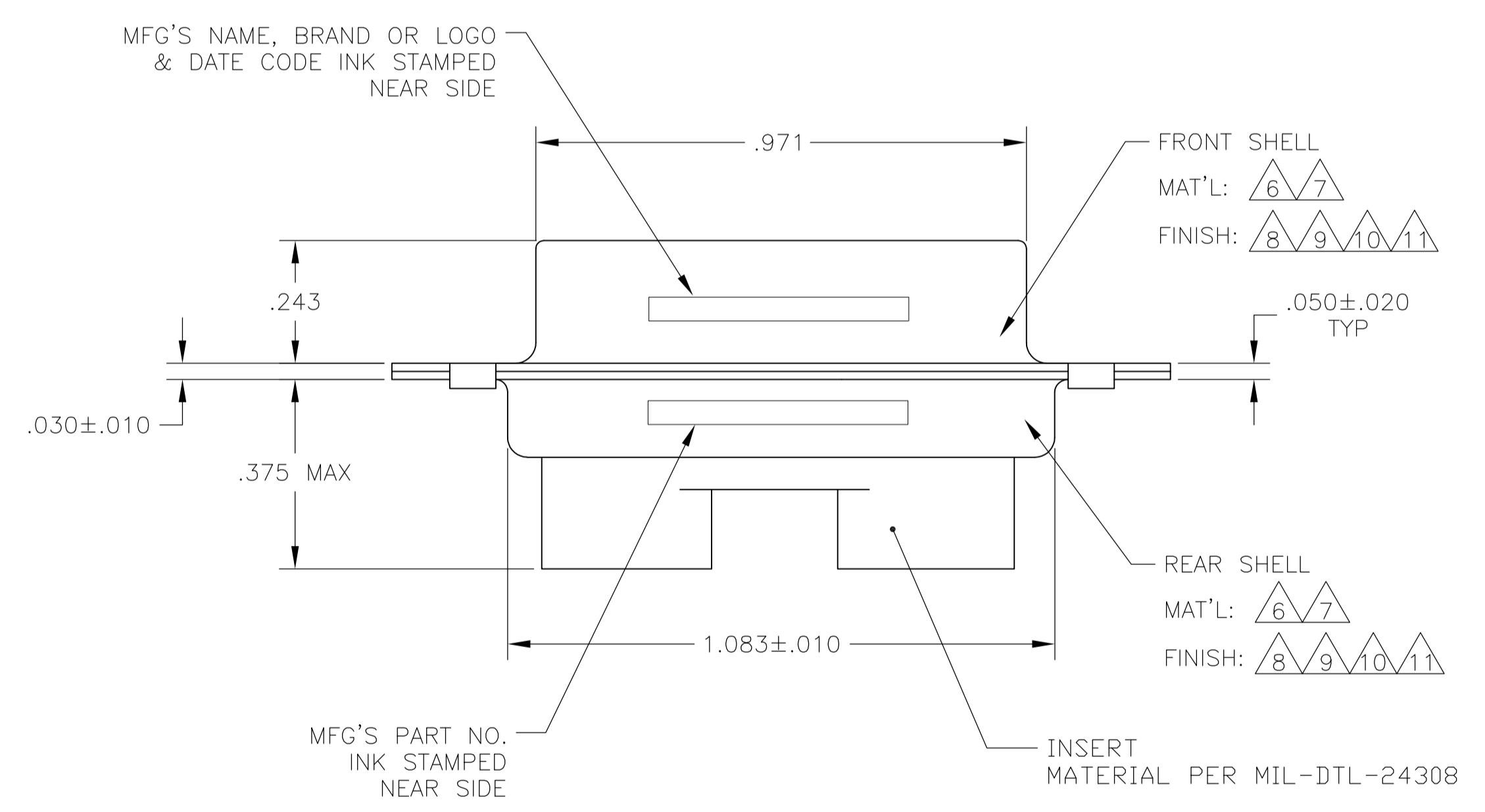
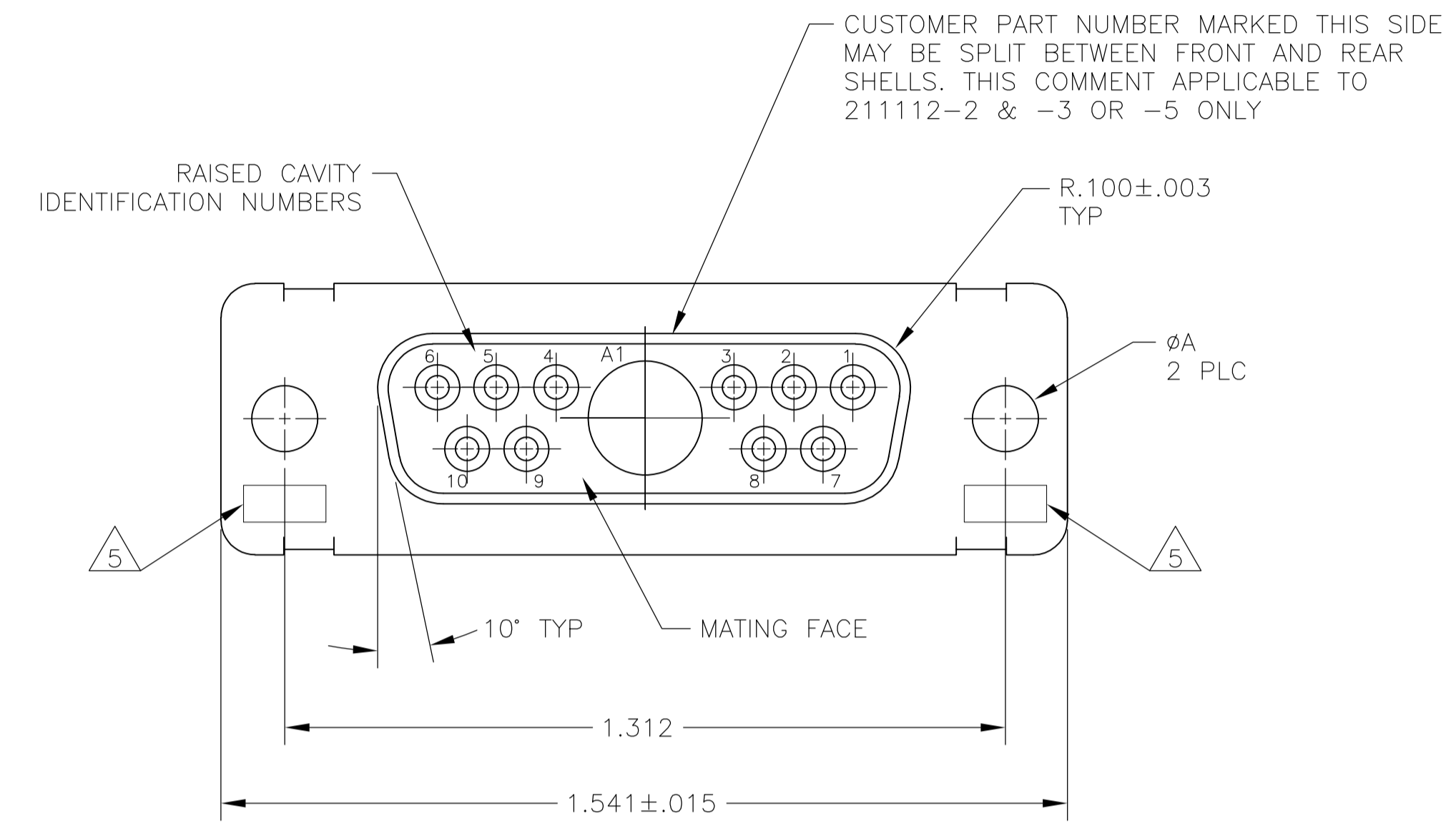


LOC		DIST		REVISIONS			
P	LTR	DESCRIPTION	DATE	DWN	APVD		
U		REV PER ECO-15-016251	13NOV15	KG	CD		



- THIS RECEPTACLE WILL MATE WITH ANY 11C1, SIZE 2 PLUG IN AMPLIMITE SERIES.
 - MAXIMUM WIRE INSULATION TO BE USED WITH THIS RECEPTACLE IS ϕ .068.
 - THIS CONNECTOR ACCEPTS (1) POWER 8, OR COAX SOCKET CONTACT IN POSITION A1, PURCHASED SEPARATELY.
 - THIS CONNECTOR ACCEPTS SIZE 20 SOCKET CONTACTS IN POSITIONS 1 THRU 10, PURCHASED SEPARATELY.
- [5] UL/CSA DESIGNATION STAMPED IN THIS AREA, OPTIONAL.
 - [6] STEEL PER ASTM-A-109.
 - [7] BRASS PER MIL-C-50 AND ASTM-B-36 UNS NO. C26000.
 - [8] CADMIUM PLATED PER QQ-P-416.
 - [9] GOLD PLATED PER MIL-G-45204 TYPE II, GRADE C, CLASS 1 OVER COPPER PER MIL-C-14550, CLASS IV.
 - [10] FINISH: TIN PER ASTM-B-545 .000400 MIN THK OVER COPPER PER AMS2418 .000050 MIN THK.
 - [11] FINISH: ZINC PLATE PER ASTM-B-633 .000200-.000400 THK WITH SUPPLEMENTARY CHROMATE (Cr3+).

[6][10]	.120	-	5-211112-4
[6][11]	.120	-	5-211112-1
[6][10]	.120	-	211112-6
[7][9]	.120	B010942-0038	211112-5
[6][10]	.120	-	211112-4
[7][9]	.154	311P405-9S-B-15	211112-3
[7][9]	.120	311P405-9S-B-12	211112-2
[6][8]	.120	-	211112-1
REMARKS	ϕ A	GSFC P/N	PART NO.

THIS DRAWING IS A CONTROLLED DOCUMENT. **STE** TE Connectivity

DIMENSIONS: INCHES	TOLERANCES UNLESS OTHERWISE SPECIFIED:	DIN T. SHUEY 01NOV88	CHK A. EMADI 21JAN88	APVD A. EMADI 21JAN88	NAME
0. PLC ± -	1. PLC ± -	2. PLC ± -	3. PLC ± .005(0.13)	4. PLC ± -	ANGLES ± σ .30'
MATERIAL	FINISH	SIZE	CAGE CODE	DRAWING NO	RESTRICTED TO
-	-	A1	00779	211112	-
CUSTOMER DRAWING		SCALE	4:1	SHEET	1 OF 1