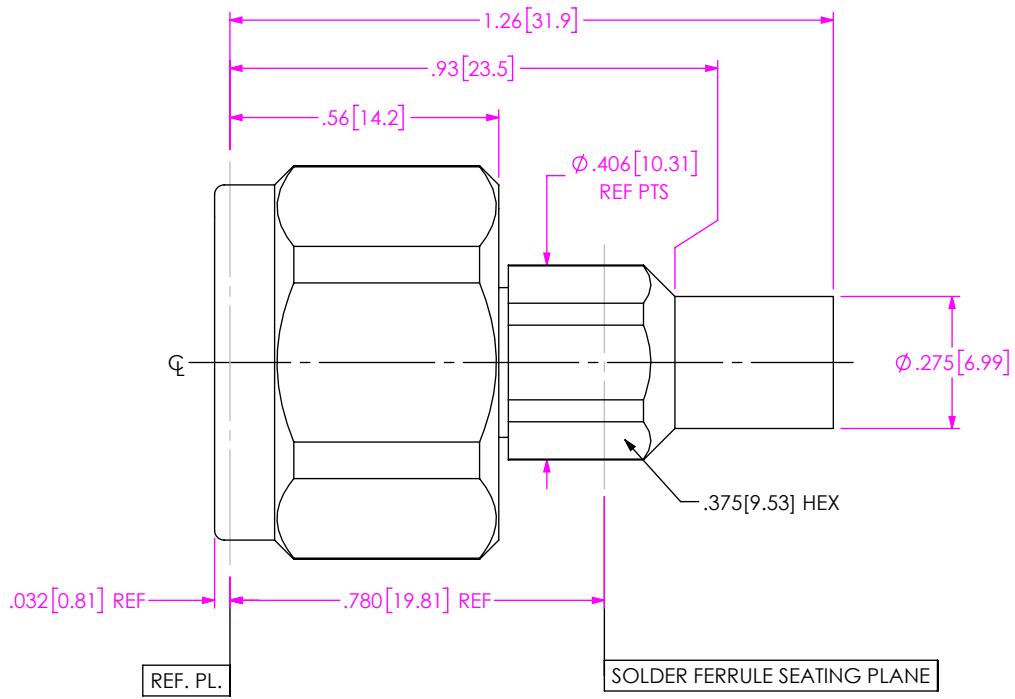


DO NOT SCALE FROM THIS PRINT

DESIGNED & DIMENSIONED IN INCHES[MILLIMETERS]



PRF06-P-C-EP-190-SS

SERIES
-06: NTPE

GENDER
-P: PLUG

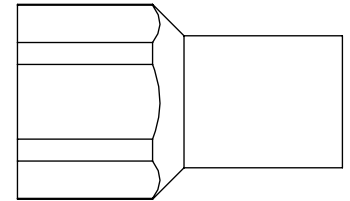
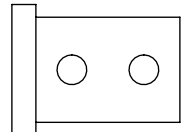
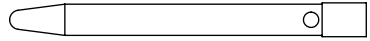
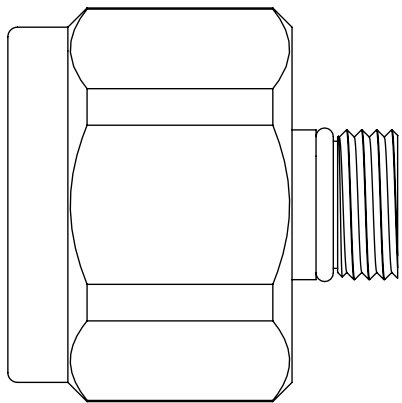
TYPE
-C: CABLE

FINISH
-EP: 50µ" EXTRA HEAVY GOLD CENTER CONTACT, PASSIVATED OUTER CONTACT

TERMINATION
-S: SOLDER CLAMP

ORIENTATION
-S: STRAIGHT

CABLE TYPE
-190: SEMFLEX HP190 CABLE



EXPLODED VIEW
NOT TO SCALE
(FOR CLARITY ONLY)

NOTES:

- MATERIAL:**
 BODY, CLAMP NUT, COUPLING NUT: STAINLESS STEEL
 CONTACT: BERYLLIUM COPPER
 SOLDER FERRULE: BRASS ALLOY
 INSULATORS: PTFE
 O-RINGS: SILICONE RUBBER
- FINISH:**
 BODY, CLAMP NUT, COUPLING NUT: PASSIVATED
 CONTACT, SOLDER FERRULE: 50µ" MIN. GOLD OVER 50µ" MIN. NICKEL PLATE
- PCI P/N: 3178

F:\DWG\MISC\MKTG\PRF06-P-C-EP-190-SS-MKT.SLDDRW

UNLESS OTHERWISE SPECIFIED, DIMENSIONS ARE IN INCHES.
 TOLERANCES ARE:
 DECIMALS ANGLES
 .XX: ±.02[0.5] 1°
 .XXX: ±.005[0.13]
 .XXXX: ±.0005[0.013]

PROPRIETARY NOTE
 * THIS DOCUMENT CONTAINS CONFIDENTIAL AND PROPRIETARY INFORMATION AND ALL DESIGN, MANUFACTURING, REPRODUCTION, USE, PATENT RIGHTS AND SALES RIGHTS ARE EXPRESSLY RESERVED BY SAMTEC, INC. THIS DOCUMENT SHALL NOT BE DISCLOSED, IN WHOLE OR PART, TO ANY UNAUTHORIZED PERSON OR ENTITY NOR REPRODUCED, TRANSFERRED OR INCORPORATED IN ANY OTHER PROJECT IN ANY MANNER WITHOUT THE EXPRESS WRITTEN CONSENT OF SAMTEC, INC.



520 PARK EAST BLVD., NEW ALBANY, IN 47150
 PHONE: 812-944-6733 FAX: 812-948-5047
 e-Mail info@SAMTEC.com code 55322

DO NOT SCALE DRAWING SHEET SCALE: 2.5:1

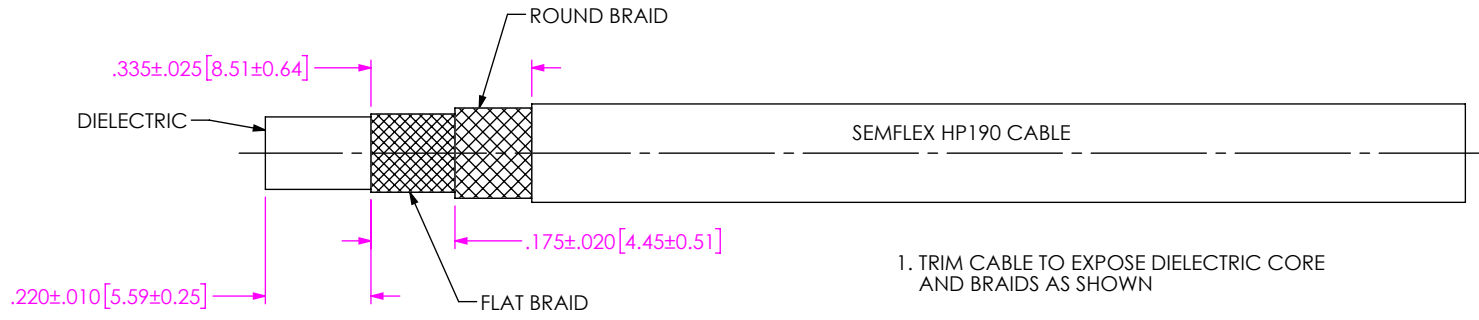
DESCRIPTION: N PLUG (18GHZ), SOLDER CLAMP FOR SEMFLEX HP190 CABLE

DWG. NO. PRF06-P-C-EP-190-SS

BY: CHRISTIAN S. 05/10/2019 SHEET 1 OF 3

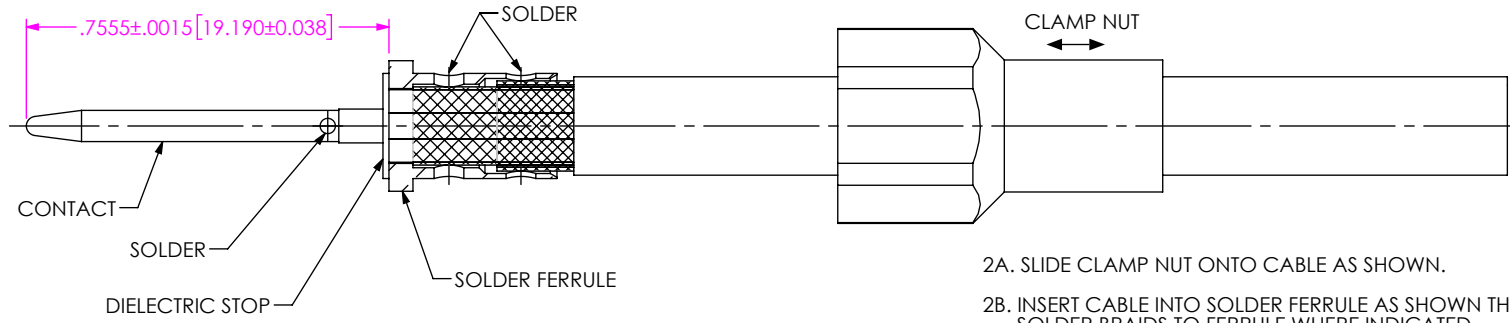
CABLE APPLICATION VIEWS

IN-PROCESS VIEW 1



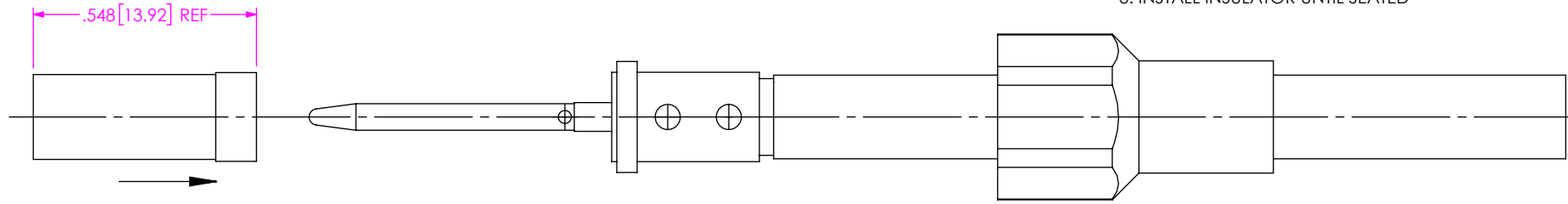
1. TRIM CABLE TO EXPOSE DIELECTRIC CORE AND BRAIDS AS SHOWN

IN-PROCESS VIEW 2



- 2A. SLIDE CLAMP NUT ONTO CABLE AS SHOWN.
- 2B. INSERT CABLE INTO SOLDER FERRULE AS SHOWN THEN SOLDER BRAIDS TO FERRULE WHERE INDICATED.
- 2C. TRIM EXPOSED CABLE DIELECTRIC FLUSH WITH SOLDER FERRULE FACE.
- 2D. SLIDE DIELECTRIC STOP OVER CABLE CENTER CONDUCTOR AGAINST FERRULE FACE AND SOLDER CONTACT FLUSH AGAINST STOP TO DIMENSION SHOWN.

IN-PROCESS VIEW 3



3. INSTALL INSULATOR UNTIL SEATED

PROPRIETARY NOTE
 THIS DOCUMENT CONTAINS CONFIDENTIAL AND PROPRIETARY INFORMATION AND ALL DESIGN, MANUFACTURING, REPRODUCTION, USE, PATENT RIGHTS AND SALES RIGHTS ARE EXPRESSLY RESERVED BY SAMTEC, INC. THIS DOCUMENT SHALL NOT BE DISCLOSED, IN WHOLE OR PART, TO ANY UNAUTHORIZED PERSON OR ENTITY NOR REPRODUCED, TRANSFERRED OR INCORPORATED IN ANY OTHER PROJECT IN ANY MANNER WITHOUT THE EXPRESS WRITTEN CONSENT OF SAMTEC, INC.



520 PARK EAST BLVD, NEW ALBANY, IN 47150
 PHONE: 812-944-6733 FAX: 812-948-5047
 e-Mail info@SAMTEC.com code 55322

DO NOT SCALE DRAWING

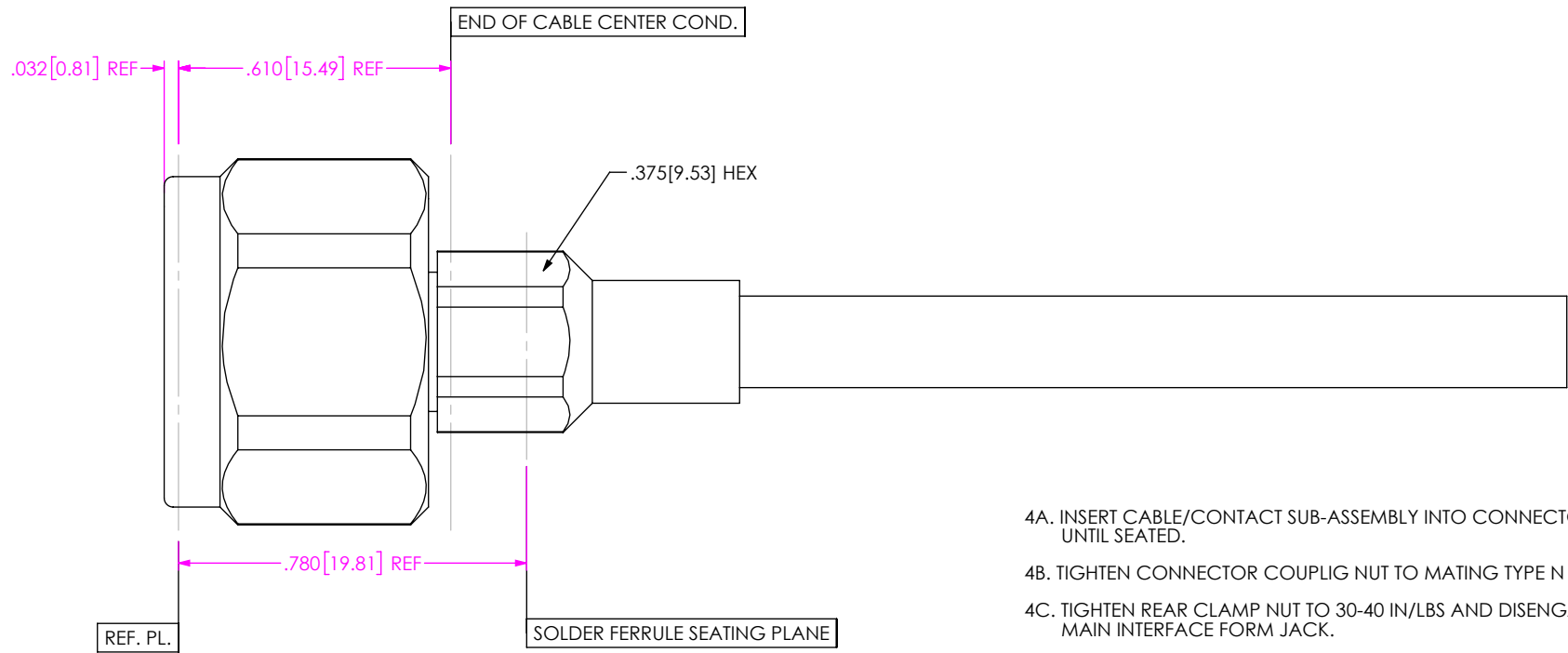
SHEET SCALE: 2.5:1

DESCRIPTION: N PLUG (18GHZ). SOLDER CLAMP FOR SEMFLEX HP190 CABLE

DWG. NO. PRF06-P-C-EP-190-SS

BY:CHRISTIAN S. 05/10/2019 SHEET 2 OF 3

CABLE APPLICATION VIEWS



- 4A. INSERT CABLE/CONTACT SUB-ASSEMBLY INTO CONNECTOR UNTIL SEATED.
- 4B. TIGHTEN CONNECTOR COUPLIG NUT TO MATING TYPE N JACK.
- 4C. TIGHTEN REAR CLAMP NUT TO 30-40 IN/LBS AND DISENGAGE MAIN INTERFACE FORM JACK.

IN-PROCESS VIEW 4

PROPRIETARY NOTE
 THIS DOCUMENT CONTAINS CONFIDENTIAL AND PROPRIETARY INFORMATION AND ALL DESIGN, MANUFACTURING, REPRODUCTION, USE, PATENT RIGHTS AND SALES RIGHTS ARE EXPRESSLY RESERVED BY SAMTEC, INC. THIS DOCUMENT SHALL NOT BE DISCLOSED, IN WHOLE OR PART, TO ANY UNAUTHORIZED PERSON OR ENTITY NOR REPRODUCED, TRANSFERRED OR INCORPORATED IN ANY OTHER PROJECT IN ANY MANNER WITHOUT THE EXPRESS WRITTEN CONSENT OF SAMTEC, INC.



520 PARK EAST BLVD, NEW ALBANY, IN 47150
 PHONE: 812-944-6733 FAX: 812-948-5047
 e-Mail info@SAMTEC.com code 55322

DO NOT SCALE DRAWING

SHEET SCALE: 2.5:1

DESCRIPTION: N PLUG (18GHZ). SOLDER CLAMP FOR SEMFLEX HP 190 CABLE

DWG. NO. PRF06-P-C-EP-190-SS

BY: CHRISTIAN S. 05/10/2019 SHEET 3 OF 3