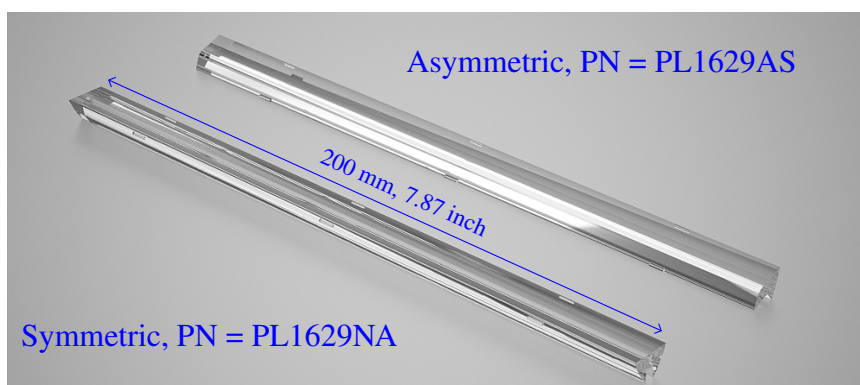
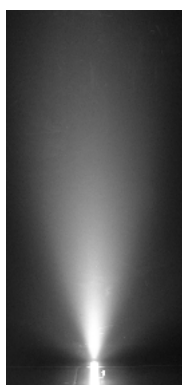




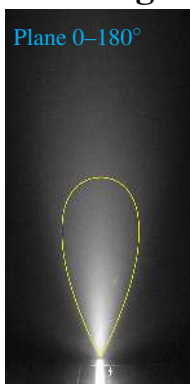
## Symmetric & Asymmetric STRIP Lens

- High Precision **Injection Molded** Strip TIR Lens;
- Available in Symmetric & Asymmetric beams;
- Linear Pins provided for robust mounting into aluminum extruded profile;
- Dimensions  $\approx H \times W \times L = 8.5 \times 12.5 \times 200$  mm; (see drawings for details)
- Optical Grade PMMA; Efficiency > 89%;
- Good Performance and Compatibility for a wide range of LEDs;
- Usable for both white and color LEDs;

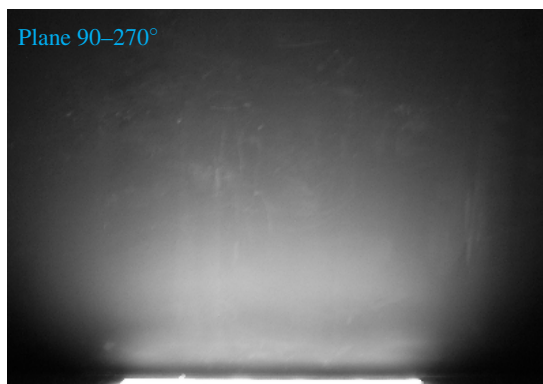


### Real World Images

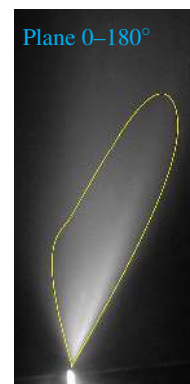
*Symmetric Beam*



Plane 90-270°



Plane 0-180°



*Asymmetric Beam*

### Typical Applications

- Architectural & Decorative;
- Retail & Museum;
- Aircraft Interior;
- Under Cabinet;
- Wall Washing;
- Cove & Corridor;
- Shop Windows.

### Suggested LEDs

Khatod Strip lenses are designed and optimized to suit most of the SMD LEDs (e.g. 335, 5050, 3528, PLCC, ...) used to build long strips, they also exhibit good performance with high brightness LEDs (e.g. Cree XP/XBD/MLE/MLB, Osram Oslon SSL/Black/Square, Lumileds Luxeon R/T/Rebel, Nichia 119/157/123, ...)

