

1

2

3

4

5

6

7

A

A

B

B

C

C

D

D

E

E

F

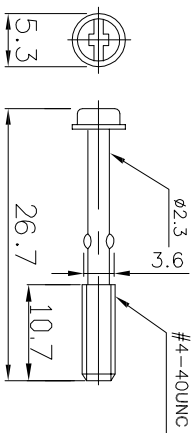
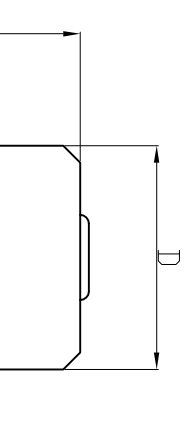
F

G

G

H

H



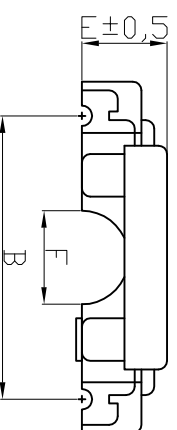
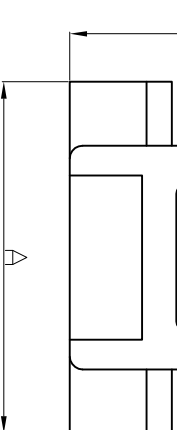
⑤ 09, 15, 25, 37, 50 Pin

The hood consists of two pieces with straight cable entry. The strain relief is inside. After assembly the screws with UNC4-40 thread are secured.

No. of contacts
09, 15, 25, 37, 50

Suitable knurled screws
AGP-RS/G
1Set=2pieces

Instead of the short screws, long thumb screws are separately available.



No. of contacts	Dimensions					
	A	B	C	D	E	F
09	33.0	25.0	45.0	18.0	10.0	7
15	41.3	33.3	45.0	26.3	10.5	10
25	50.0	47.0	45.0	40.0	10.4	10
37	72.5	63.5	45.0	56.5	10.5	14
50	69.5	61.4	44.7	54.3	9.6	14

④ **Material**
ABS

Delivery includes

- 2 half-sheets
- 2 fixing screws
- 4 screws
- 2 strain relief bow
- 2 nuts

RoHS compliant

Scale	1:1
TOLERANCE	
X.X	±0.50
X.XX	±0.30
X.XXX	±0.20
DIM	TOL
X.°	±5°
X.X°	±X°
Angle	TOL

⑥	Correct Dim C	30.6.2016	Winnie
⑥	Add the screw dimension	17.09.2013	Winnie
④	Corrected material	14.12.2010	Dean
③	Added 50 poles	28.12.2009	Dean
②	Zeichnung überarbeitet	09.07.2007	N.Schulz
①	Drawn	12.01.2005	Ken
Id.	Modification	Date	Name

Order Code
AGP - XX - G
1

Customer-No.

ASSMANN WSW-No.

AGP XX G

Drawing-No.

ASS 0293 CO rev06

Replace

Sheet

ASSMANN
WSW/ components

1

2

3

4

5

6

7