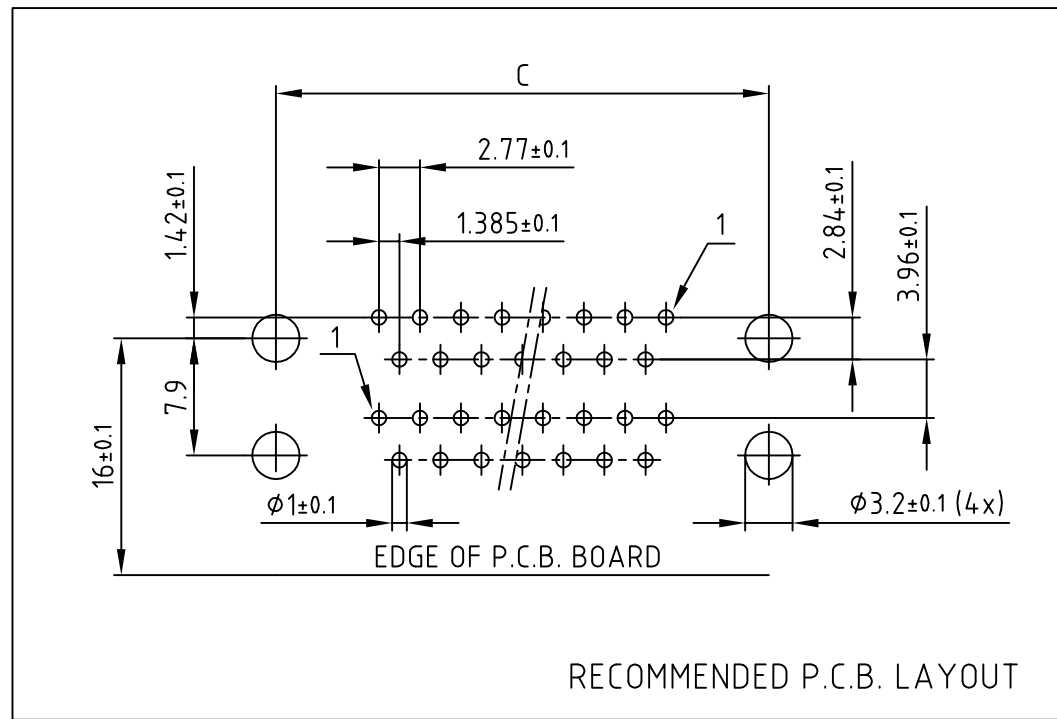
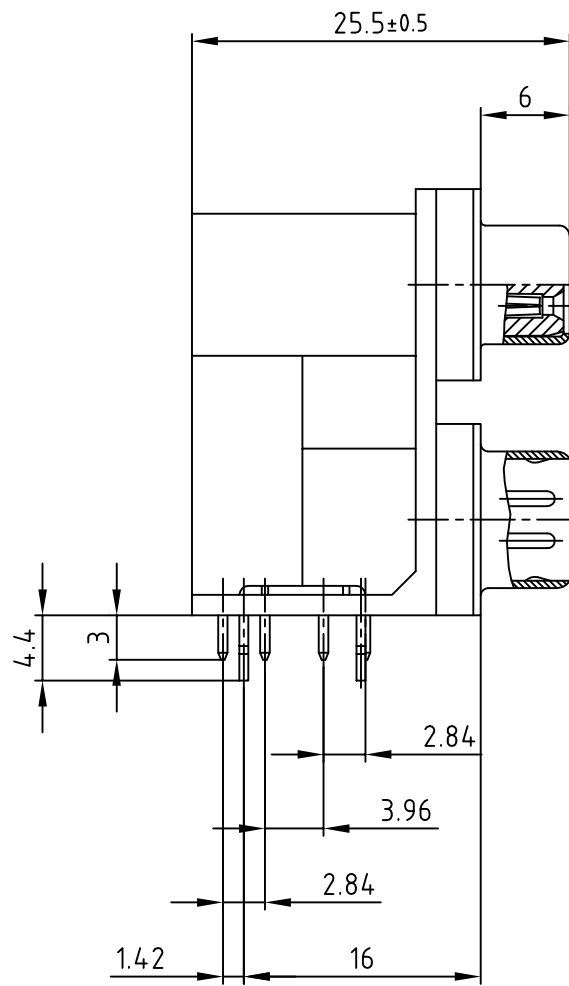
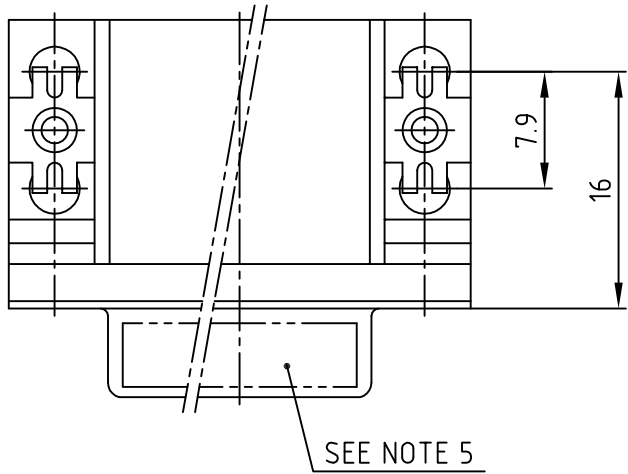
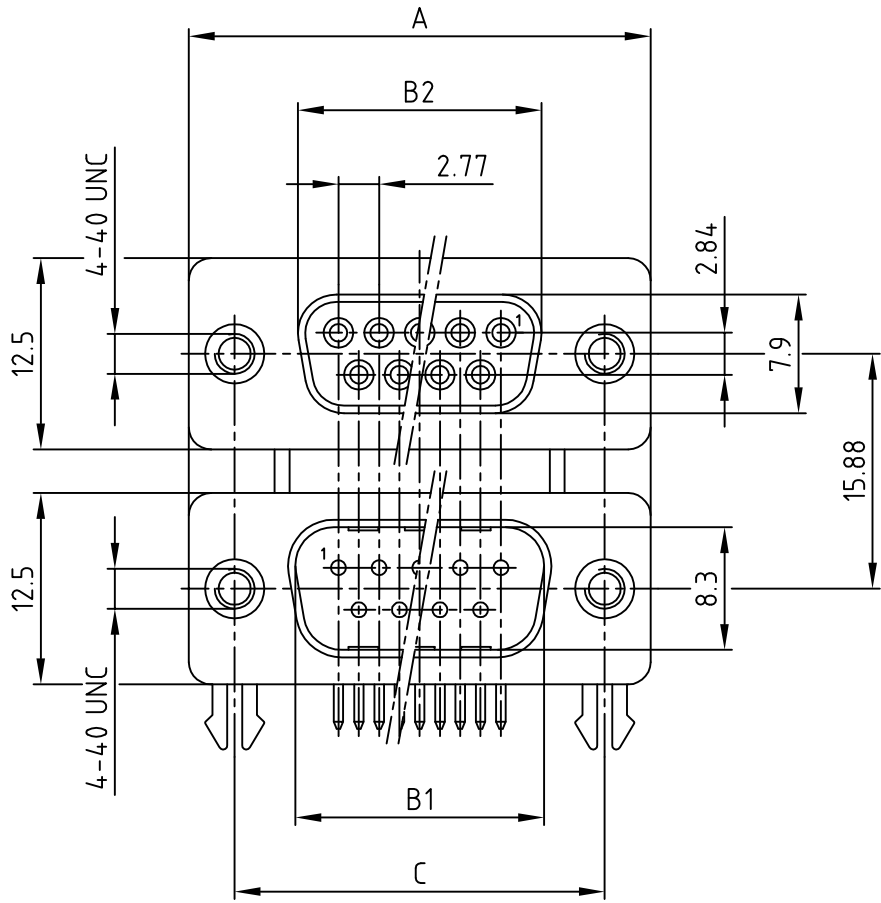


used for: D-SUB DUAL-PORT



| No. of pos. | A     | B1    | B2    | C     | Part NO.     |
|-------------|-------|-------|-------|-------|--------------|
| 2x 9        | 30.80 | 16.92 | 16.30 | 25.00 | DLS1SP5AN21X |
| 2x15        | 39.20 | 25.25 | 24.60 | 33.30 | DLS2SP5AN21X |
| 2x25        | 53.10 | 38.96 | 38.30 | 47.10 | DLS3SP5AN21X |
| 2x37        | 69.40 | 55.42 | 54.80 | 63.50 | DLS4SP5AN21X |

Directive 2002/95/EC RoHS compliant

NOTES:

- METALSHELLS: STEEL; min. 320µin TIN
- INSULATORS: PBT GF UL 94 V-0, BLACK
- CONTACTS: COPPER ALLOY  
PLATING MATING AREA: GOLD FLASH
- MAXIMUM TORQUE VALUE FOR THREAD: 6 in.LB
- CONNECTOR IS PART MARKED: PART-NO. CONEC ABC

|   |        |
|---|--------|
| APPROVAL # FREIGABE # DEBLOCAGE # AUTOR/ZACION # APPROVAL |        |
| CUSTOMER APPROVAL DATE:                                   |        |
| NAME:   | TITLE: |
| COMPANY NAME:   |        |
| APPROVAL # FREIGABE # DEBLOCAGE # AUTOR/ZACION # APPROVAL |        |

THIS DRAWING MAY NOT BE COPIED OR REPRODUCED IN ANY WAY, AND MAY NOT BE PASSED ON TO A THIRD PARTY WITHOUT WRITTEN PERMISSION.  
OWNERSHIP AND COPYRIGHT OF CONEC GmbH  
DO NOT ALTER CAD DRAWING BY HAND

| 1 x b | Ä3442       | 28.09.2009 | Petker |
|-------|-------------|------------|--------|
| a     | Origin      |            |        |
| rev.  | description | date       | name   |

|           |            |              |                                  |
|-----------|------------|--------------|----------------------------------|
| tolerance |            | scale:       | 2:1                              |
|           | dim. in mm | material:    | SEE NOTES                        |
| 2004      | date       | name         | title:                           |
| drawn     | 18.05.     | Lehmenkühler | DUAL-PORT 15.88mm                |
| appd.     | 18.05.     | Mickenbecker | Female / Male 2x9pos. - 2x37pos. |
|           | norm       |              | with 4-40 UNC insert and clip    |
|           | d-old      |              | dwg no:                          |
|           |            |              | AutoCAD 2004                     |
|           |            |              | DIN-A                            |
|           |            |              | 3                                |
|           |            |              | sh:1/1                           |
|           |            |              | part no: SEE TABLE               |

