

This document is the property of Amphenol Corporation and is delivered on the express condition that is not to be disclosed, reproduced or used, in whole or in part, for manufacture or sale by anyone other than Amphenol Corporation without its prior consent, and that no right is granted to disclose or to use any information in this document.

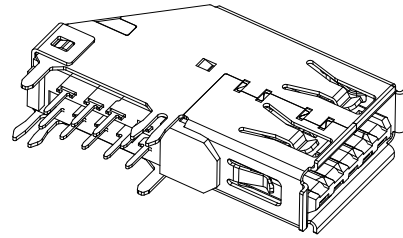
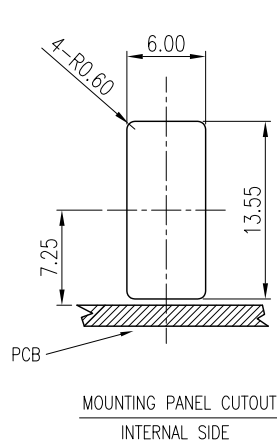
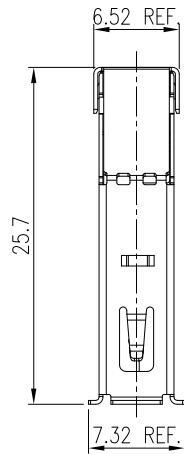
The marking on this product doesn't contain environmental hazardous materials per Material Specification 55-00259 for Sony GP compliant or per directive 2011/65/EU for RoHS compliant.



ORIGINAL



REVISIONS				
SYM	ECN No.	DESCRIPTION	DATE	APPROVED
A	NE-17305	NON-RELEASE REVISION	12/13/2017	Arron Lin



P/N: GSB31D1 X X X 1H2HR

PLATING OPTIONS

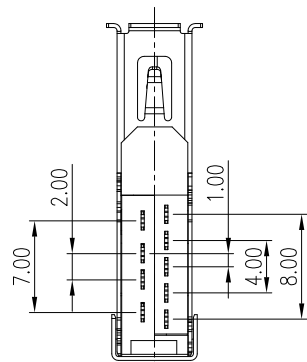
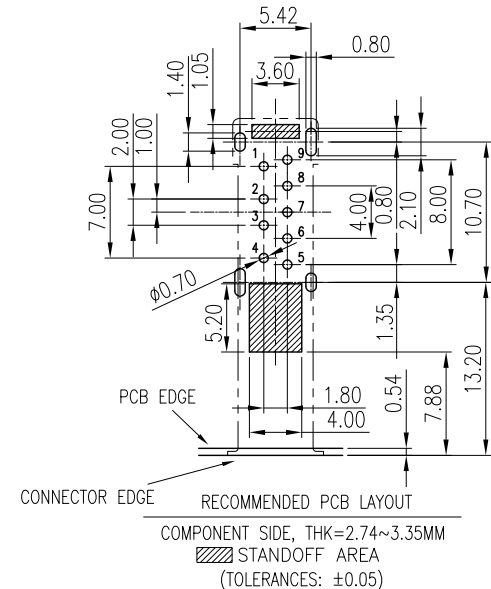
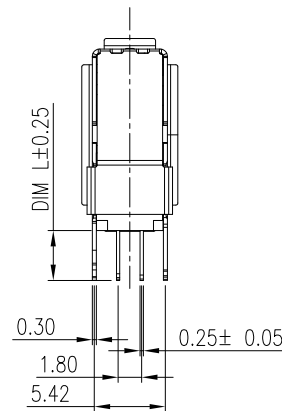
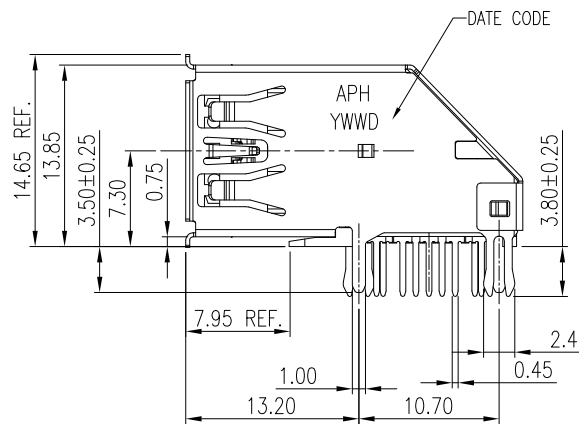
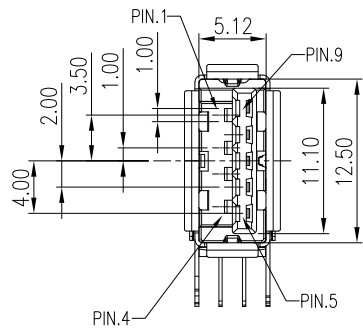
1. GOLD FLASH
2. 15u" GOLD
3. 30u" GOLD

- COLOR OPTIONS
0. BLUE
  6. BLACK

DIM L  
4: 3.80mm

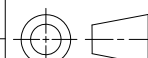
NOTES:

1. MATERIAL:  
HOUSING: HIGH TEMPERATURE THERMAL PLASTIC, PA10T, UL94V-0. COLOR: OPTIONS  
TERMINAL 3.0: BRASS.  
TERMINAL 2.0: PHOSPHOR BRONZE.  
SHELL: STEEL.
2. FINISH:  
TERMINAL:  
CONTACT AREA: SELECTIVE GOLD PLATING;  
SOLDERING AREA: MATTE TIN PLATING 100 μ" THICKNESS MIN.;  
UNDER PLATING: NICKEL PLATING 50 μ" THICKNESS MIN.OVERALL.  
SHELL:  
ELECTROLESS NICKEL PLATING 50 μ" THICKNESS MIN.OVERALL.
3. PRODUCT SPECIFICATION REFER TO : PS-7425
4. THE PART CAN WITHSTAND REFLOW PROCESS WITH RECOMMENDED REFLOW PROFILE SHARED IN PRODUCT SPECIFICATION PS-7425.
5. THIS PRODUCT DOESN'T CONTAIN ENVIRONMENTAL HAZARDOUS PER DIRECTIVE 2011/65/EU FOR RoHS COMPLIANT.



Pin Number	Signal Name
1	VBUS
2	D-
3	D+
4	GND
5	SSRX-
6	SSRX+
7	GND_DRAIN
8	SSTX-
9	SSTX+
Shell	Shield

TOLERANCE	APPROVALS	DATE	TITLE	UNIT	SIZE	PART No.
X. X.X ±0.30 X.XX ±0.20 X.XXX ±0.10	DRAWN Debby Hung	12/13/2017	USB 3.0 A TYPE RECEPTACLE UP RIGHT , DIP TYPE (SHELL TAIL=3.8 )	mm	A3	GSB31D1XXX1H2HR
ANGULAR ±1°	CHECKED Sandy Wu	12/13/2017				
UNLESS OTHERWISE SPECIFIED	APPROVED Arron Lin	12/13/2017	UNIT	mm	SIZE	A3
	DWG TYPE CUST DWG	PROJECT CODE OTHER	SCALE	NA	SHEET	1 OF 2
						DWG No. GSB31D1XXX1H2HR
						REV. A



This document is the property of Amphenol Corporation and is delivered on the express condition that is not to be disclosed, reproduced or used, in whole or in part, for manufacture or sale by anyone other than Amphenol Corporation without its prior consent, and that no right is granted to disclose or to use any information in this document.

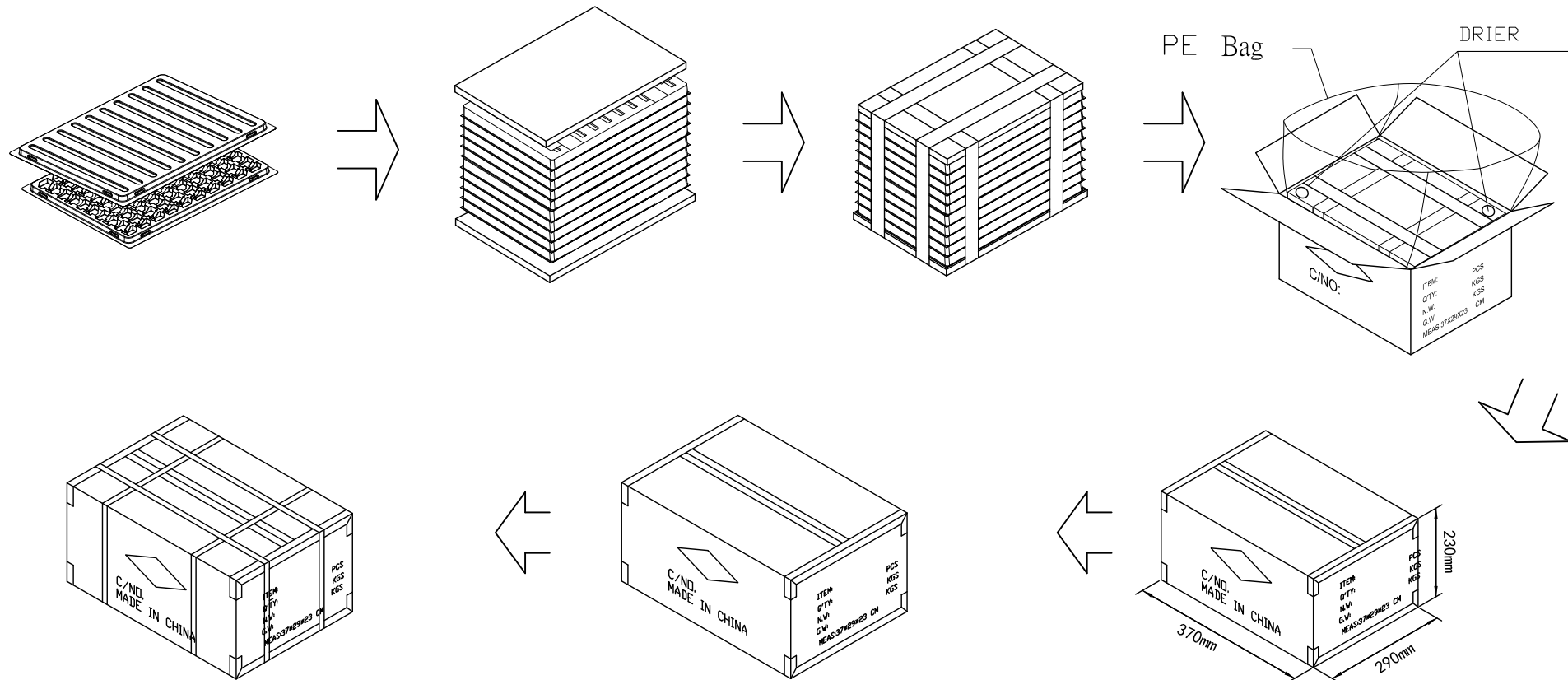
The marking on this product doesn't contain environmental hazardous materials per Material Specification 55-00259 for Sony GP compliant or per directive 2011/65/EU for RoHS compliant.



ORIGINAL



REVISIONS				
SYM	ECN No.	DESCRIPTION	DATE	APPROVED
A	NE-17305	NON-RELEASE REVISION	12/13/2017	Arron Lin



PACKAGING BY TRAY	9.5	6.4	100	20	2000	GSB31D1XXX1H2HR
	G/W KG	N/W KG	PCS/ TRAY	TRAYS/ BOX	QUANTITY (PCS)	PART NUMBER

TOLERANCE	APPROVALS	DATE	TITLE	UNIT	SIZE	PART No.
X. ±0.30	DRAWN Debby Hung	12/13/2017	USB 3.0 A TYPE RECEPTACLE UP RIGHT , DIP TYPE (SHELL TAIL=3.8 )	mm	A3	GSB31D1XXX1H2HR
X.X ±0.20	CHECKED Sandy Wu	12/13/2017				
X.XX ±0.10	APPROVED Arron Lin	12/13/2017		SCALE NA	SHEET 2 OF 2	DWG No. GSB31D1XXX1H2HR
ANGULAR ±1°	DWG TYPE CUST DWG	PROJECT CODE OTHER		REV. A		
UNLESS OTHERWISE SPECIFIED						