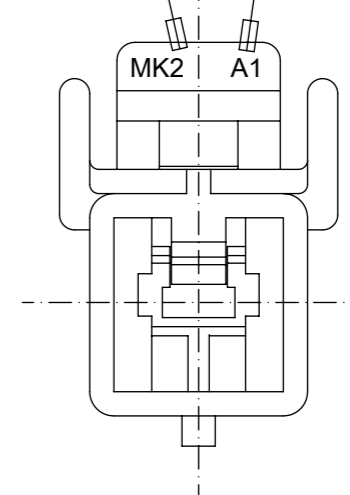


NOTES

1. HOUSING COLOR: SEE TABLE
2. MATING HOUSING: 35150-0100
3. APPLICABLE TERMINAL: 35746-0*10
4. APPLICABLE TPA: 35182-019*

TRADE MARK
(MK2)

CAVITY NO.
(A1,A2,A3...)



PRE-RELEASE
REFERENCE
USE ONLY

NO	PRODUCT		MATERIAL	
	PART NO	MATERIAL NO	COLOR	DESCRIPTION
1	35151-0110	351510110	NATURAL	PBT (UL94V-0)
2	35151-0112	351510112	RED	
3	35151-0114	351510114	BLUE	
4	35151-0119	351510119	NATURAL	PBT/PC

THIS DRAWING CONTAINS INFORMATION THAT IS PROPRIETARY TO MOLEX ELECTRONIC TECHNOLOGIES, LLC AND SHOULD NOT BE USED WITHOUT WRITTEN PERMISSION											
SYMBOLS		DIMENSION UNITS		SCALE		CURRENT REV DESC:					
▽ = 0		mm		4:1		molex .070 W/W PLUG HOUSING-1P PRODUCT CUSTOMER DRAWING					
▽ = 0		GENERAL TOLERANCES (UNLESS SPECIFIED)									
▽ = 0		ANGULAR TOL ± 1.0°									
▽ = 0		4 PLACES ±		±		EC NO: 617086					
▽ = 0		3 PLACES ±		±		DRWN: SCHONG03 2019/05/12					
▽ = 0		2 PLACES ±		±		CHK'D: JBJIN 2019/05/16					
▽ = 0		1 PLACE ±		± 0.3		APPR: YSKIM02 2019/05/16					
☒ = 0		0 PLACES ±		±		INITIAL REVISION:					
■ = 0		DRAFT WHERE APPLICABLE MUST REMAIN WITHIN DIMENSIONS				THIRD ANGLE PROJECTION		DRAWING		SERIES	
▽ = 0		THIRD ANGLE PROJECTION		DRAWING		SERIES		MATERIAL NUMBER		CUSTOMER	
		A3-SIZE		35151		SEE TABLE		GENERAL MARKET		1 OF 1	

DOCUMENT STATUS	RELEASE DATE
-----------------	--------------