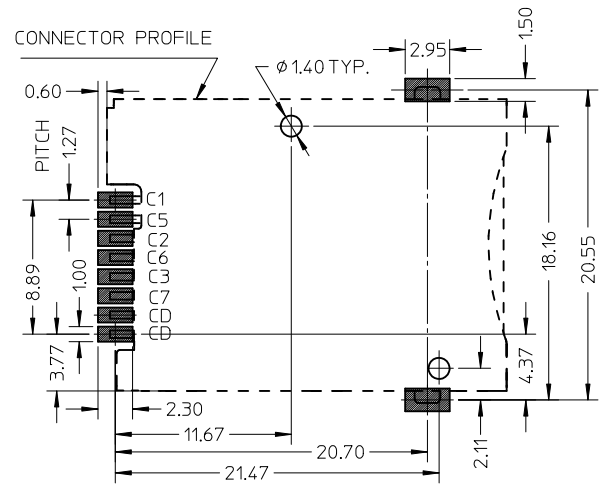
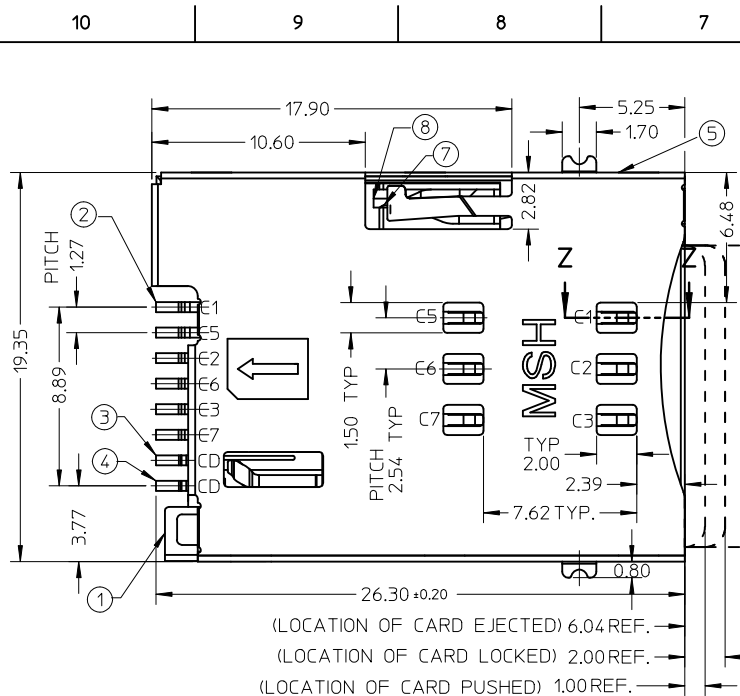


- NOTES:
- 1 FINISH:
 - 1-1 TERMINAL :
 - 50~200µ NICKEL UNDER PLATED
 - 15µ GOLD PLATING ON CONTACT AREA
 - 3µ MIN GOLD FLASH ON SOLDERING AREA
 - 1-2 SHELL :
 - 50~200µ NICKEL UNDER PLATED
 - 3µ MIN GOLD FLASH ON SOLDERING AREA
 - 1-3 DETECT PIN :
 - 50~200µ NICKEL UNDER PLATED
 - 3µ MIN GOLD PLATING ON CONTACT AREA
 - 3µ MIN GOLD PLATING ON SOLDERING AREA
 - 2 SOLDER TAIL COPLANARITY: 0.08MM MAX.
 - 3 TERMINAL TIP MUST SINK INTO HOUSING
 - 4 PRODUCT COMPLIANT TO ROHS DIRECTIVE 2002/95/EC AND ELV DIRECTIVE 2000/53/EC
 - 5 DETECT SWITCH: INSERT CARD=ON (NORMAL=OPEN)
 - 6 SPRING RISE UP DURING PUSH-PUSH PERIOD
 - 7 PACKAGE DRAWING: PK-47553-001
 - 8 PRODUCT SPECIFICATION: PS-47553-201

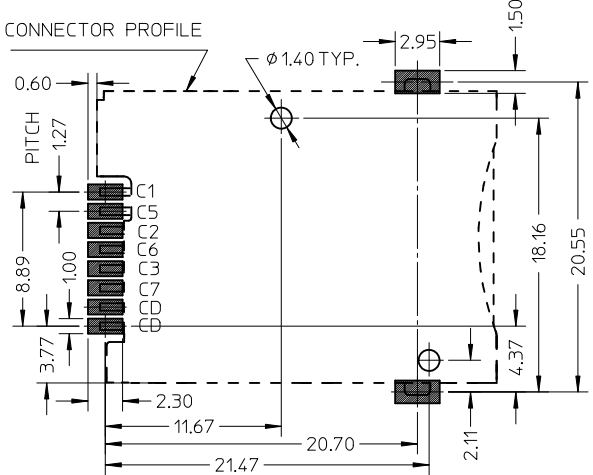
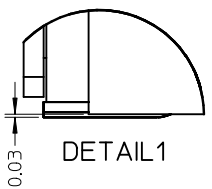
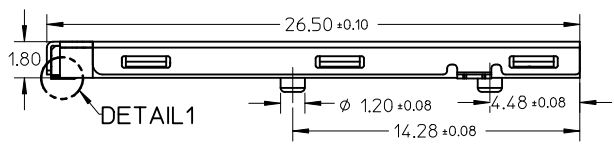
CARD INSERTED		WITHOUT CARD	
NO.	DESCRIPTION	Q'TY	MATERIAL
1	HOUSING	1	HIGH TEMPERATURE THERMOPLASTIC
2	TERMINAL	6	COPPER ALLOY
3	DETECT PIN LOWER	1	COPPER ALLOY
4	DETECT PIN UPPER	1	COPPER ALLOY
5	SHELL	1	STAINLESS STEEL
6	COIL SPRING	1	PIANO WIRE
7	HEART CAM	1	HIGH TEMPERATURE THERMOPLASTIC
8	CAM PIN	1	STAINLESS STEEL



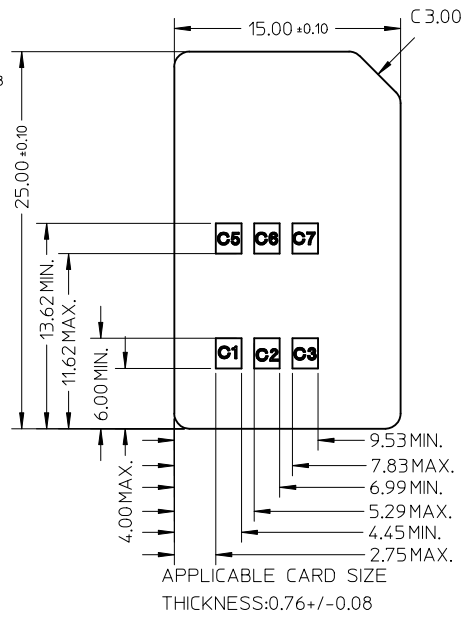
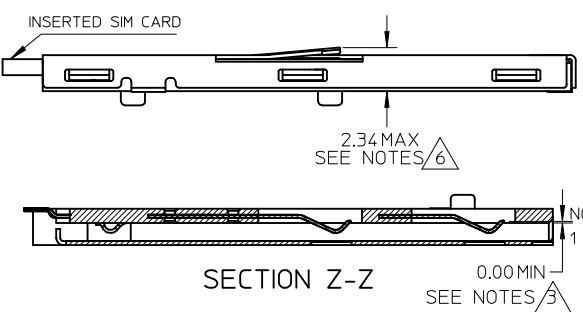
NEW DIM TOL CTRL EC NO: DRW/KHL/IM CHKD: JIAN02 APPR: 2011/05/27	QUALITY SYMBOLS ▽=0 ◁=0	GENERAL TOLERANCES (UNLESS SPECIFIED) <table border="1"> <tr> <th></th> <th>mm</th> <th>INCH</th> </tr> <tr> <td>4 PLACES</td> <td>±---</td> <td>±---</td> </tr> <tr> <td>3 PLACES</td> <td>±---</td> <td>±---</td> </tr> <tr> <td>2 PLACES</td> <td>± 0.15</td> <td>±---</td> </tr> <tr> <td>1 PLACE</td> <td>±---</td> <td>±---</td> </tr> <tr> <td colspan="3">ANGULAR ±---</td> </tr> </table>		mm	INCH	4 PLACES	±---	±---	3 PLACES	±---	±---	2 PLACES	± 0.15	±---	1 PLACE	±---	±---	ANGULAR ±---			DIMENSION STYLE MM ONLY	SCALE NTS	DESIGN UNITS METRIC	THIRD ANGLE PROJECTION
		mm	INCH																					
	4 PLACES	±---	±---																					
	3 PLACES	±---	±---																					
2 PLACES	± 0.15	±---																						
1 PLACE	±---	±---																						
ANGULAR ±---																								
DRAWN BY LHSHEH 2007/07/09	DATE 2007/07/09	CHECKED BY XUXIANG 2007/08/30	DATE 2007/08/30	TITLE PUSH PUSH 6 PINS SIM WITH DETECT PIN&POST SALES DRAWING	MOLEX INCORPORATED	SHEET NO. 1 OF 1																		
APPROVED BY HWWANG 2007/08/30	DATE 2007/08/30	MATERIAL NO. 475532001	DOCUMENT NO. SD-47553-201	THIS DRAWING CONTAINS INFORMATION THAT IS PROPRIETARY TO MOLEX INCORPORATED AND SHOULD NOT BE USED WITHOUT WRITTEN PERMISSION																				
DRAFT WHERE APPLICABLE MUST REMAIN WITHIN DIMENSIONS	SIZE A3																							



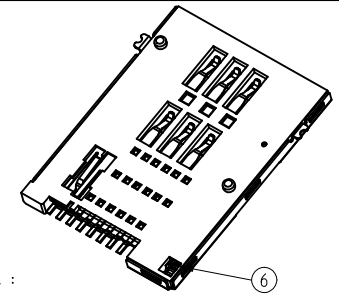
(LOCATION OF CARD EJECTED) 6.04 REF.
 (LOCATION OF CARD LOCKED) 2.00 REF.
 (LOCATION OF CARD PUSHED) 1.00 REF.



RECOMMENDED PCB LAYOUT
 TOLERANCE +/-0.05MM



APPLICABLE CARD SIZE
 THICKNESS: 0.76 +/- 0.08



- NOTES:
- FINISH:
 - 1-1 TERMINAL :
 - 50~200μ NICKEL UNDER PLATED
 - 15μ GOLD PLATING ON CONTACT AREA
 - 3μ MIN GOLD FLASH ON SOLDERING AREA
 - 1-2 SHELL :
 - 50~200μ NICKEL UNDER PLATED
 - 3μ MIN GOLD FLASH ON SOLDERING AREA
 - 1-3 DETECT PIN :
 - 50~200μ NICKEL UNDER PLATED
 - 3μ MIN GOLD PLATING ON CONTACT AREA
 - 3μ MIN GOLD PLATING ON SOLDERING AREA
 - SOLDER TAIL COPLANARITY: 0.08MM MAX.
 - TERMINAL TIP MUST SINK INTO HOUSING
 - PRODUCT COMPLIANT TO ROHS DIRECTIVE 2002/95/EC AND ELV DIRECTIVE 2000/53/EC
 - DETECT SWITCH: INSERT CARD=ON (NORMAL=OPEN)
 - PACKAGE DRAWING: PK-47553-001
 - PRODUCT SPECIFICATION: PS-47553-201



NO.	DESCRIPTION	Q'TY	MATERIAL
1	HOUSING	1	HIGH TEMPERATURE THERMOPLASTIC
2	TERMINAL	6	COPPER ALLOY
3	DETECT PIN LOWER	1	COPPER ALLOY
4	DETECT PIN UPPER	1	COPPER ALLOY
5	SHELL	1	STAINLESS STEEL
6	COIL SPRING	1	PIANO WIRE
7	HEART CAM	1	HIGH TEMPERATURE THERMOPLASTIC
8	CAM PIN	1	STAINLESS STEEL

NEW DIM TOL CTRL EC NO: DRW/KHL/IM CHKD: JIAN02 APPR: REV	2011/05/27	DESCRIPTION	QUALITY SYMBOLS
			▽=0 ∇=0

GENERAL TOLERANCES (UNLESS SPECIFIED)	mm	INCH
	4 PLACES ± ---	± ---
	3 PLACES ± ---	± ---
	2 PLACES ± 0.15	± ---
1 PLACE ± ---	± ---	
ANGULAR ± ---°		
DRAFT WHERE APPLICABLE MUST REMAIN WITHIN DIMENSIONS		

DIMENSION STYLE MM ONLY	
DRAWN BY LHSHEN	DATE 2007/07/09
CHECKED BY XUXIANG	DATE 2007/08/30
APPROVED BY HWWANG	DATE 2007/08/30
MATERIAL NO. 475532001	
SIZE A3	THIS DRAWING CONTAINS INFORMATION THAT IS PROPRIETARY TO MOLEX INCORPORATED AND SHOULD NOT BE USED WITHOUT WRITTEN PERMISSION

SCALE NTS	DESIGN UNITS METRIC	THIRD ANGLE PROJECTION
TITLE PUSH PUSH 6 PINS SIM WITH DETECT PIN&POST SALES DRAWING		
MOLEX MOLEX INCORPORATED		
DOCUMENT NO. SD-47553-201	SHEET NO. 1 OF 1	