

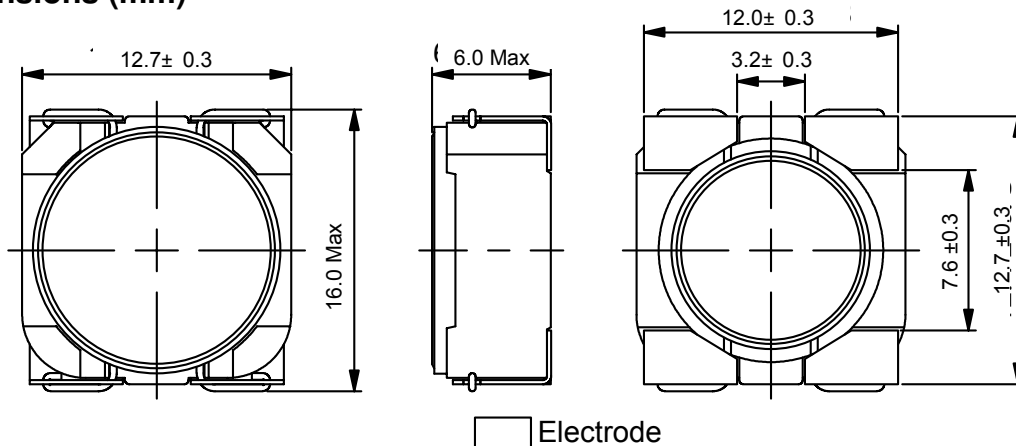
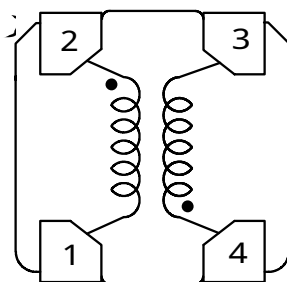
Type: CLS125

**◆ Product Description**

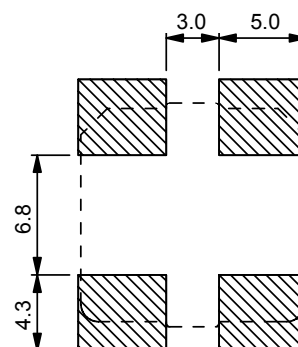
- 4 Terminal pins' type gives a flexible design as inductors or transformers.
- Can also be used as a coupled inductor, two single inductors connected in parallel, as 1:1 transformer or as an autotransformer when connected in series.
- Core material: Ferrite.
- Custom design is available.


**◆ Feature**

- Max. Operating frequency: 1MHz.
- 2 in 1 Coils for high efficiency up-down DC-DC converters.(SEPIC, Zeta, Cuk converter).
- Storage temperature range: -40°C~+105°C.
- Operating temperature range: -40°C~+105°C (including coil's self-heat).
- Product weight: 3.48g(Ref.).
- Ideally used in the power supply for DSC, Note PC, DVC and W-LED backlighting.
- RoHS Compliance.

**◆ Dimensions (mm)**

**◆ Schematics (Bottom)**


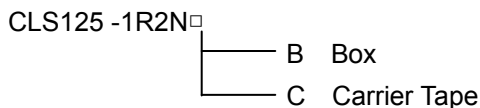
“•” indicates polarity.

**◆ Land Pattern (mm)**


Type: CLS125

**◆ Specification**

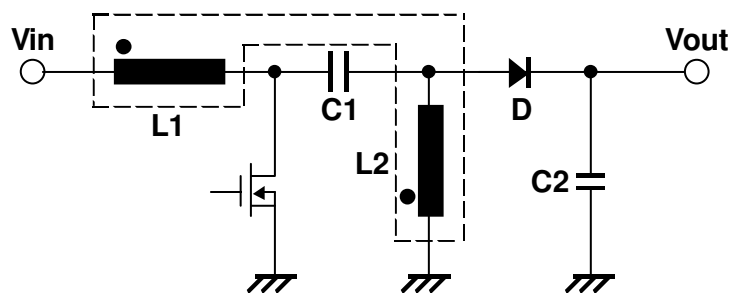
Part No.	Stamp	Inductance [ Within ]	D.C.R. [Max.] (mΩ) (at 20°C)※ 1		Saturation Current ( A ) ※ 2				Temperature Rise current (A) ※ 3	
			(2-1)	(4-3)	In parallel		In series		In parallel	In series
					at 20°C	at 100°C	at 20°C	at 100°C		
CLS125-1R2N□	1R2	1.2μH±30%	9.7(8.1)	10.2(8.7)	13.0	12.0	6.8	6.0	10.30	4.65
CLS125-2R0N□	2R0	2.0μH±30%	11.0(9.5)	12.8(10.7)	10.2	8.8	5.3	4.6	9.84	4.10
CLS125-3R0N□	3R0	3.0μH±30%	13.7(11.5)	15.8(13.2)	8.5	7.4	4.5	3.8	8.80	4.08
CLS125-5R6N□	5R6	5.6μH±30%	21.8(18)	25.0(20.9)	6.4	5.5	3.0	2.6	6.90	3.25
CLS125-7R0N□	7R0	7.0μH±30%	24(20)	28(24)	5.7	4.8	2.9	2.5	6.60	2.88
CLS125-110N□	110	11μH±30%	42(36)	50(42)	5.5	4.0	2.2	1.8	4.62	2.20
CLS125-150N□	150	15μH±30%	54(45)	64(54)	4.8	3.9	1.8	1.5	4.30	1.92
CLS125-230N□	230	23μH±30%	80(67)	96(80)	2.9	2.7	1.7	1.4	3.35	1.53
CLS125-380N□	380	38μH±30%	115(176)	140(118)	2.6	2.2	1.3	1.1	2.80	1.30
CLS125-500N□	500	50μH±30%	170(176)	210(145)	2.2	2.0	0.9	0.8	2.16	1.00
CLS125-750N□	750	75μH±30%	365(220)	315(264)	1.8	1.5	0.8	0.7	1.78	0.80
CLS125-111N□	111	110μH±30%	325(273)	400(335)	1.4	1.3	0.7	0.6	1.50	0.72

**※ Description Of Part Name**


※ 1. ( ) typical value.

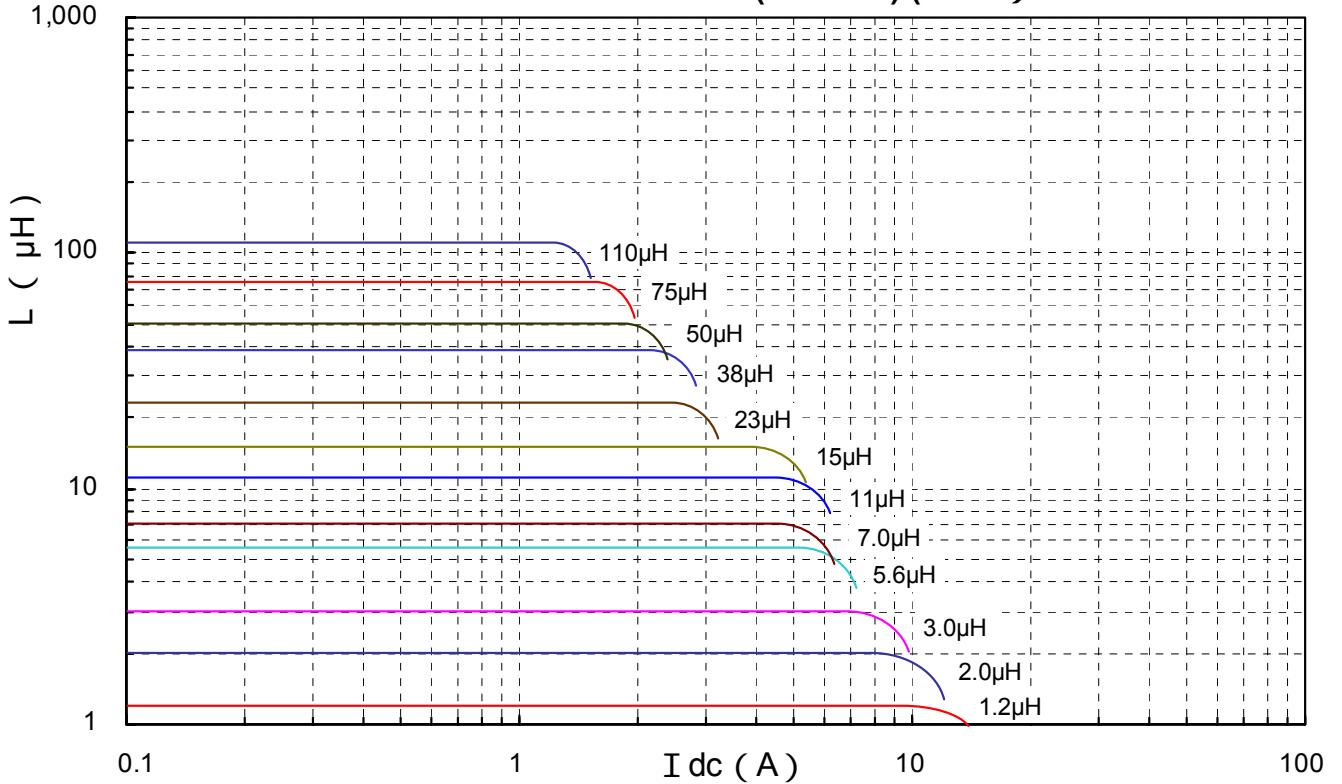
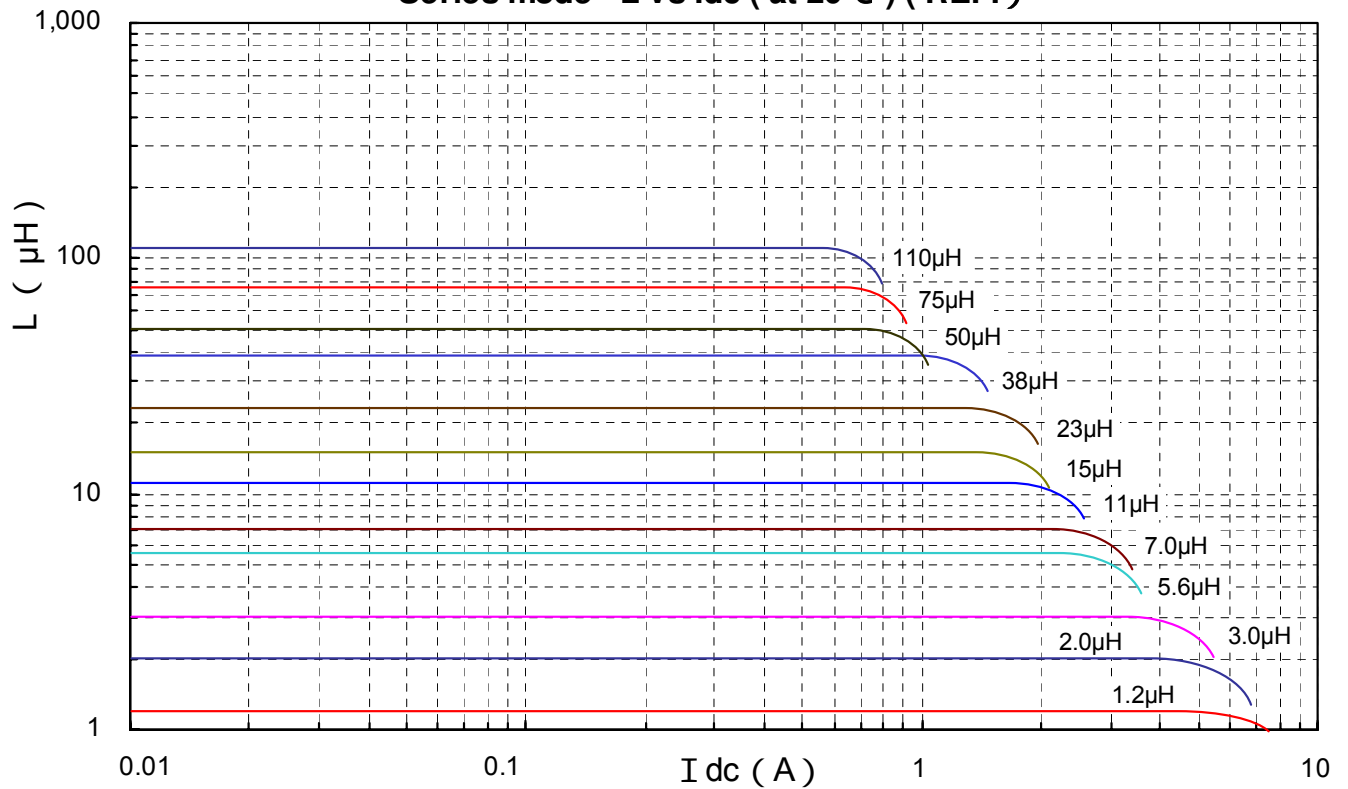
※ 2. Saturation Current: The DC current at which the inductance decreases to 90% of it's nominal value.

 ※ 3. Temperature rise current: The DC current at which the temperature rise is  $\Delta t = 40^{\circ}\text{C}$ . ( $T_a = 20^{\circ}\text{C}$ ).

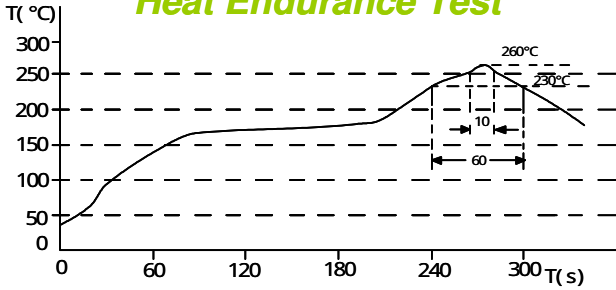
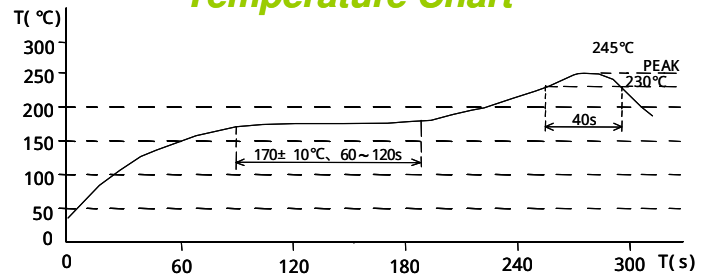
**◆ Typical SEPIC Schematic**


Type: CLS125

## ◆ Typical L Vs Current ( REF. )

 Parallel mode L vs I<sub>dc</sub> ( at 20°C ) ( REF. )

 Series mode L vs I<sub>dc</sub> ( at 20°C ) ( REF. )


Type: CLS125

**◆ Recommendation Reflow Condition**
**Heat Endurance Test**

**Temperature Chart**

**◆ Packaging with Embossed Tape and Reel**

Qty.: 500pcs/reel

