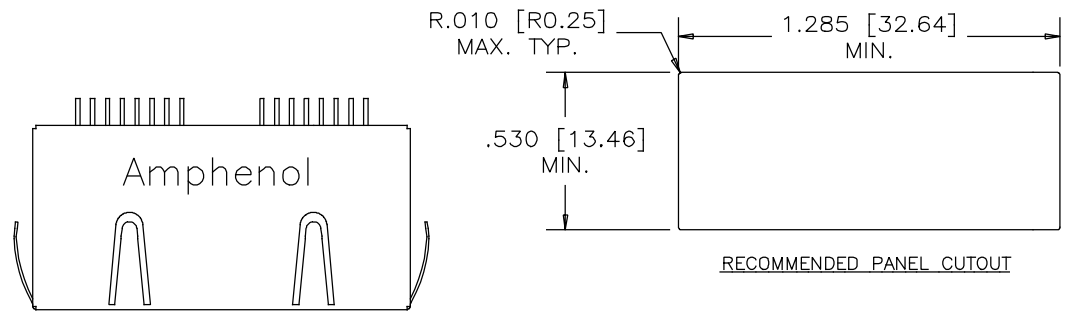


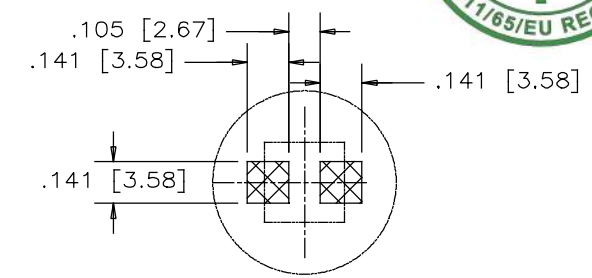
REVISIONS				
SYM	ZONE	ECN, ERN NO.	DATE	APPRD.
A		PROPOSAL	OCT 31/12	L.C.
B		CORRECT DRAWING	SEP 27/16	L.C.



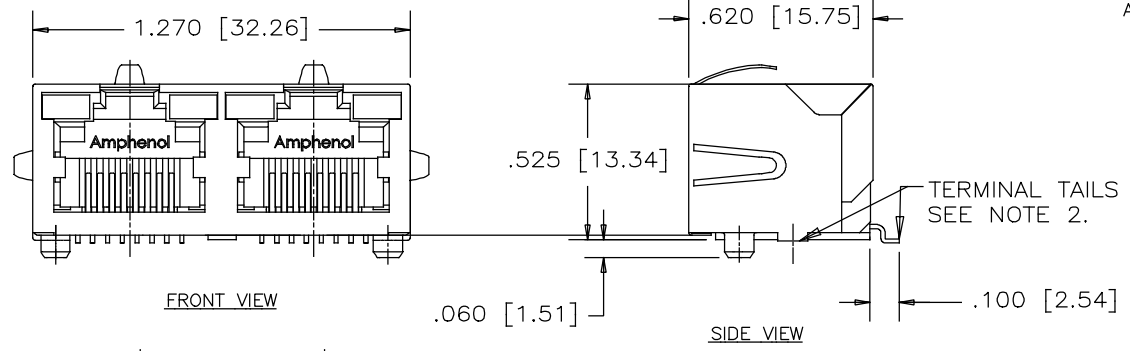
1. THIS LIGHT PIPE IS INTENDED FOR POST REFLOW INSERTION INTO THE CONNECTOR ASSEMBLY.  
 2. LIGHT PIPE TO BE PURCHASED SEPARATELY BY CUSTOMER



ASSEMBLY LIGHT PIPE SKETCH VIEW



DETAIL 'A' (ENLARGED)  
 SMT LED SOLDER PAD  
 (SMT LED TO BE PROVIDED BY THE CUSTOMER)



NOTES:  
 1. MATERIALS:  
 HOUSING:

ENGINEERING THERMOPLASTIC  
 FLAMMABILITY RATING UL 94V-0  
 COLOR: BLACK

CONTACTS:  
 PLATING:

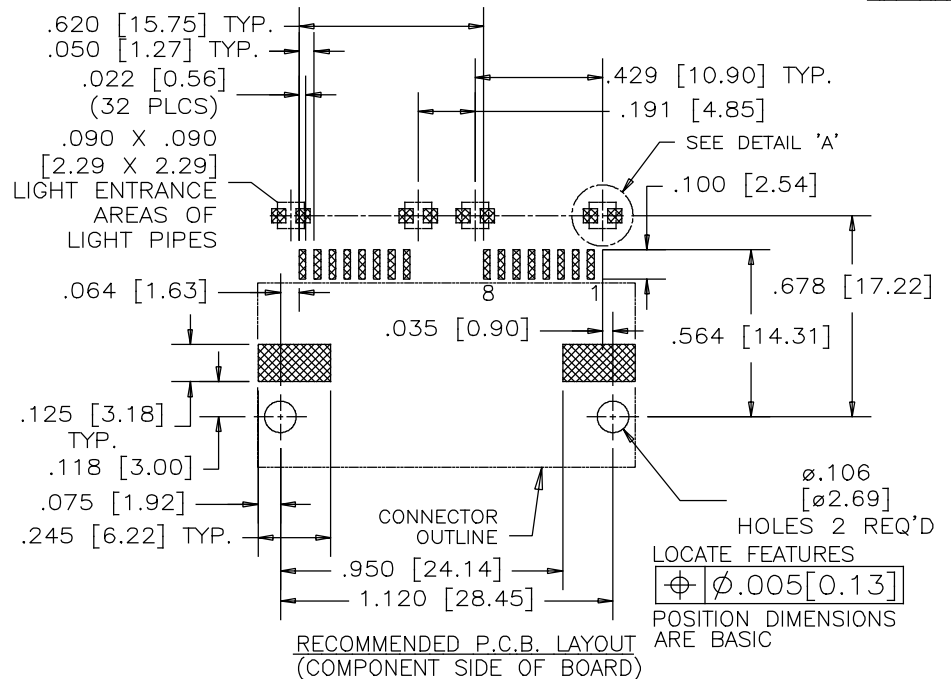
PHOSPHOR BRONZE  
 20 u" [0.63 MICRONS] MIN. GOLD ON MATING SURFACES.  
 50 u" [1.27 MICRONS] MIN. NICKEL UNDERPLATE.  
 100 u" [2.54 MICRONS] MIN. MATTE-TIN OR GOLD FLASH ON CONTACT TAILS.

SHIELD: COPPER ALLOY PLATED NICKEL

2. COPLANARITY SPECIFICATION:

WITH THE MODULAR JACK SITTING ON A LEVEL SURFACE, THE MAXIMUM GAP BETWEEN THE LEVEL SURFACE OF SHIELD TAB AND ALL TERMINAL TAILS IS .004 [0.10].

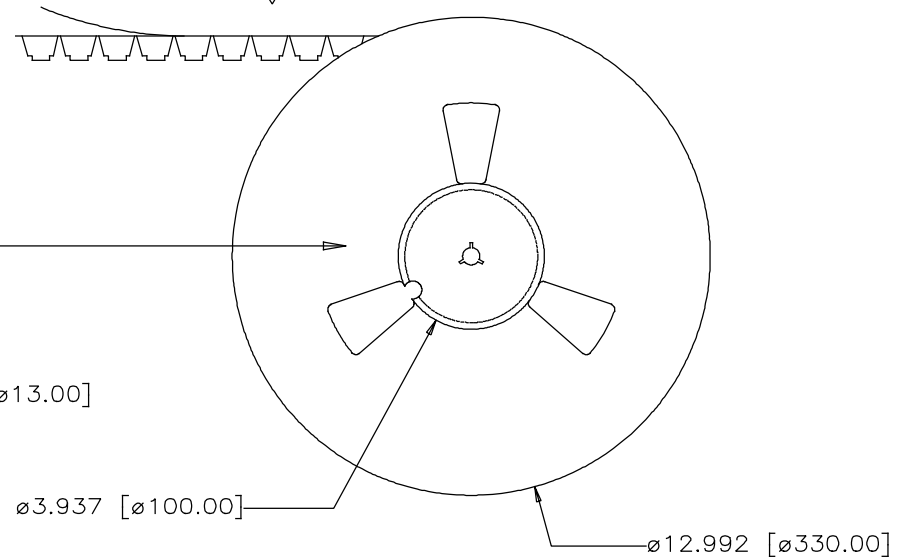
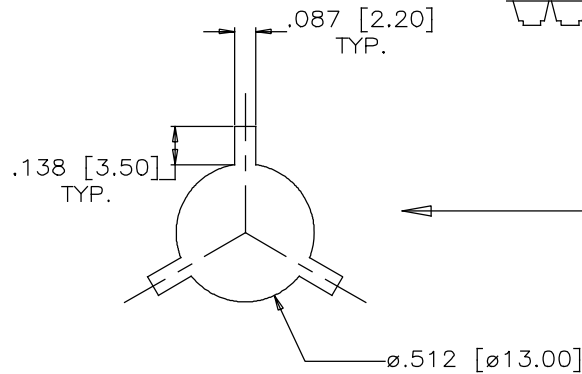
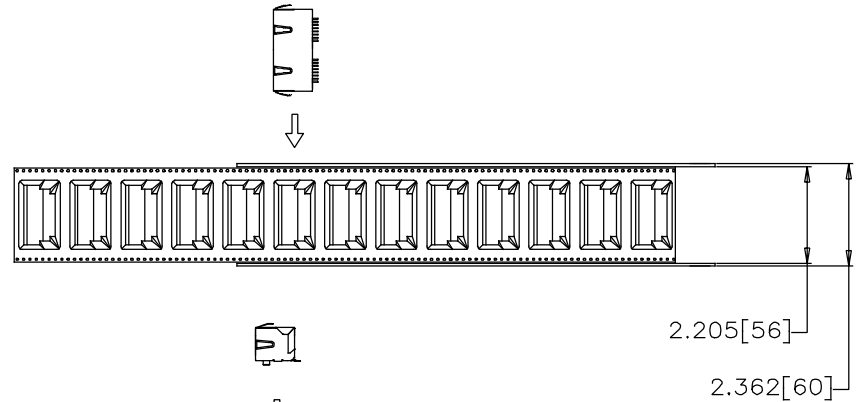
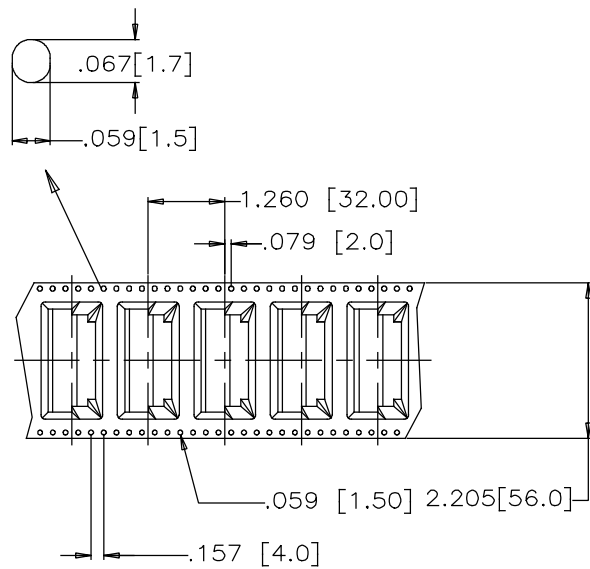
PART NUMBER: RJSSE-5582-02T



THIS DOCUMENT CONTAINS PROPRIETARY INFORMATION AND SUCH INFORMATION MAY NOT BE DISCLOSED TO OTHERS FOR ANY PURPOSE OR USED FOR MANUFACTURING PURPOSES WITHOUT WRITTEN PERMISSION FROM AMPHENOL CANADA CORP.

MATERIAL	DRAWN	AMY.Z	DATE	OCT31/12	Amphenol Canada Corp.		
	DESIGNED						
FINISH	CHECKED	L.CHAN	OCT31/12	TITLE			
	I. E. APPRD.			2 PORT, SURFACE MOUNT, RJ45 ,MODULAR JACK, 8P8C,SHIELDED WITH FLAT BOTTOM TABS, WITH LIGHT PIPE HOLE-ROHS COMPLIANT			
	Q. A. APPRD.			DWG	DRAWING NO.	REV.	
	DWG. APPRD.			C	P-RJSSE-5582-02T	B	
	ENG. REL. NO.			SCALE	3/1	WT.	
	REF.			DIMENSIONS ARE IN INCHES [mm]	CODE ID. NO.	03554	SHEET 1 OF 1

REVISIONS				
SYM	ZONE	ECN, ERN NO.	DATE	APPRD.
A		PROPOSAL	OCT31/12	L.CHAN
B		CORRECT DRAWING	SEP27/16	L.CHAN



PACKAGING NOTES:

- ONE REEL SHOULD HOLD 100 CONNECTORS.
- 10 EMPTY CAVITIES FOR BOTH TOP AND BOTTOM OF THE CARRIER.
- A FULLY LOADED CARTON SHOULD CONTAIN 5 REELS (500 PCS) OF CONNECTOR.
- LIGHT PIPES WILL BE PACKED IN SEPARATE TRAYS

MATERIAL	DRAWN	AMY,Z	DATE	OCT31/12	Amphenol Canada Corp.		
	DESIGNED						
FINISH	CHECKED	L.CHAN	DATE	OCT31/12	TITLE 2 PORT, SURFACE MOUNT, RJ45 ,MODULAR JACK, 8P8C,SHIELDED WITH FLAT BOTTOM TABS, WITH LIGHT PIPE HOLE-ROHS COMPLIANT		
	I. E. APPRD.						
	Q. A. APPRD.						
	DWG. APPRD.						
	ENG. REL. NO.		DWG	DRAWING NO.	P-RJSSE-5582-02T	REV.	B
	REF.		C				
	DIMENSIONS ARE IN INCHES [mm]	CODE ID. NO.	03554	SCALE	WT. -----	SURF. -----	SHEET 2 OF 2

THIS DOCUMENT CONTAINS PROPRIETARY INFORMATION AND SUCH INFORMATION MAY NOT BE DISCLOSED TO OTHERS FOR ANY PURPOSE OR USED FOR MANUFACTURING PURPOSES WITHOUT WRITTEN PERMISSION FROM AMPHENOL CANADA CORP.