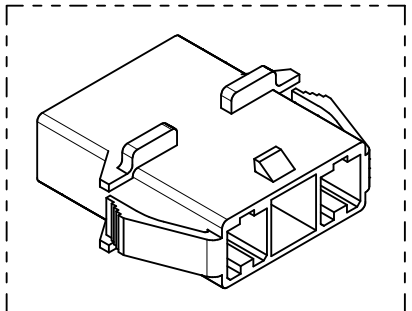
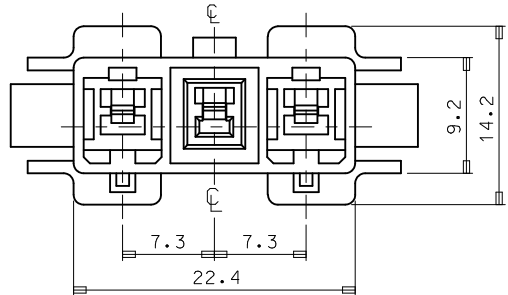


CIRCUIT NO.

Ⓒ TOOL NO & CAVITY NO  
(TOOL:A.B. CAV:1.2..)

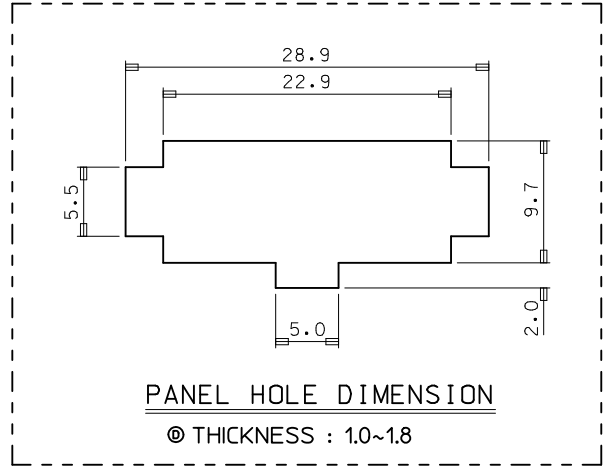
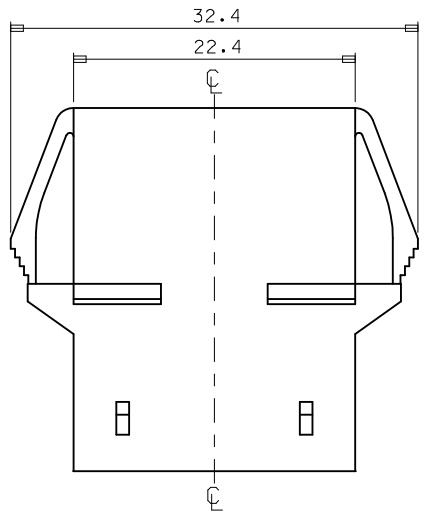
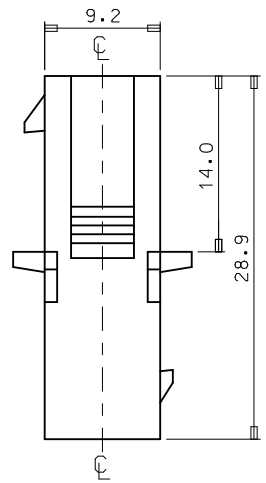
**VIEW "A"**

TRADE MARK  
(MK2)



**NOTES.**

1. MATERIAL & COLOR : SEE TABLE
2. MATED HOUSING : 35151-031\*
3. APPLICABLE TERMINAL : 35745-0\*10 (1 CIRCUIT)  
35746-0\*10 (2 CIRCUIT)  
35747-0\*10 (3 CIRCUIT)
4. APPLICABLE T.P.A : 35150-039\*
5. PRODUCT SPECIFICATION : PS-35150-003



**PANEL HOLE DIMENSION**

Ⓒ THICKNESS : 1.0~1.8

NO	PRODUCT		MATERIAL
	PART NO	COLOR	DESCRIPTION
1	35150-0310	NATURAL	POLYESTER (PBT) (UL94V-0)
2	35150-0314	BLUE	
3	35150-0319	NATURAL	
4	35150-2319	RED	PC/PET (UL94V-0)
5	35150-3319	YELLOW	
6	35150-4319	BLUE	

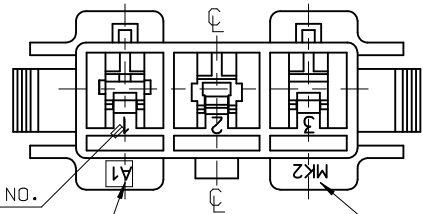
REVISED	EC NO: KOR2010-0092	2010/01/14
	DRWN: JHPARK01	2010/01/14
	CHKD: WY. YANG	2010/01/14
	APPR: YUNSIKKIM	2010/01/14

QUALITY SYMBOLS	DESCRIPTION
▽=0	
∇=0	

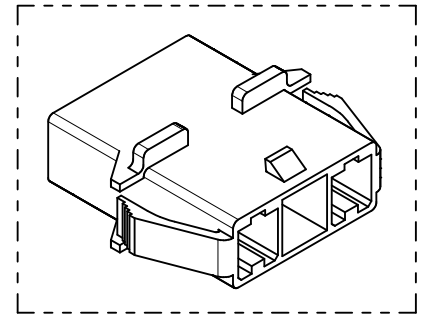
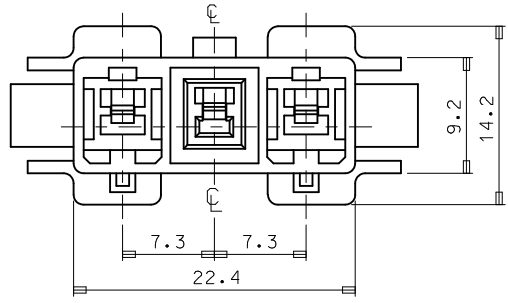
GENERAL TOLERANCES (UNLESS SPECIFIED)	
	mm INCH
4 PLACES	± --- ± ---
3 PLACES	± --- ± ---
2 PLACES	± --- ± ---
1 PLACE	± 0.3 ± ---
ANGULAR ± 1 °	
DRAFT WHERE APPLICABLE MUST REMAIN WITHIN DIMENSIONS	

DIMENSION STYLE		SCALE	DESIGN UNITS	THIRD ANGLE PROJECTION
MM ONLY		1:1	METRIC	
DRAWN BY	DATE	TITLE		
JS.KANG		7.3 PITCH W/W CONN MALE HSG-3P(W/EAR)		
CHECKED BY	DATE	APPROVED BY		
		DATE		
MATERIAL NO.		DOCUMENT NO.		SHEET NO.
SEE TABLE		SD-35150-031*		1 OF 01

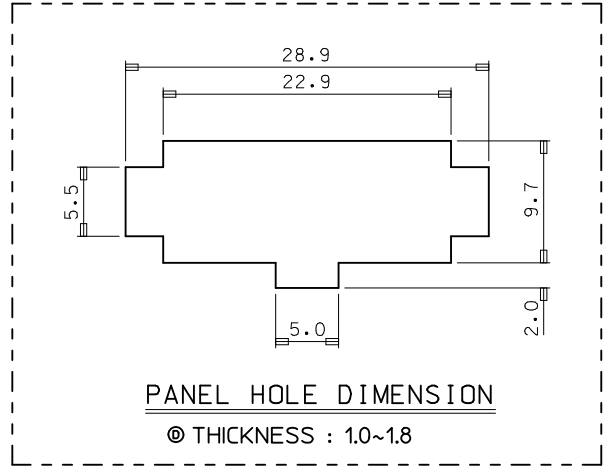
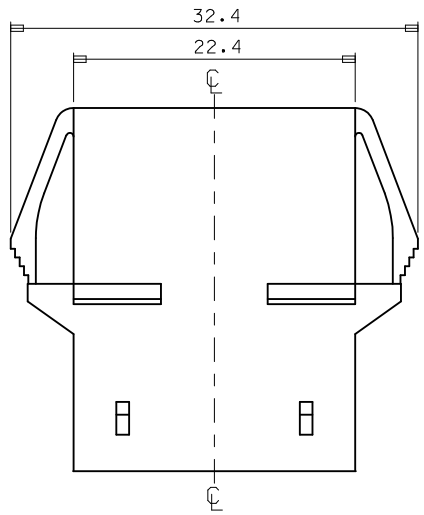
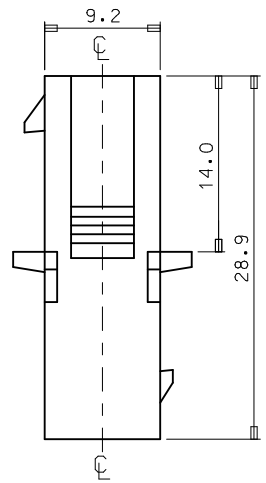
DRAWN BY		DATE	TITLE	
JS.KANG			7.3 PITCH W/W CONN MALE HSG-3P(W/EAR)	
CHECKED BY		DATE	APPROVED BY	
			DATE	
MATERIAL NO.		DOCUMENT NO.		SHEET NO.
SEE TABLE		SD-35150-031*		1 OF 01



**VIEW "A"**  
 CIRCUIT NO.  
 © TOOL NO & CAVITY NO (TOOL:A.B. CAV:1.2.)  
 TRADE MARK (MK2)



- NOTES.**
1. MATERIAL & COLOR : SEE TABLE
  2. MATED HOUSING : 35151-031\*
  3. APPLICABLE TERMINAL : 35745-0\*10 (1 CIRCUIT)  
 35746-0\*10 (2 CIRCUIT)  
 35747-0\*10 (3 CIRCUIT)
  4. APPLICABLE T.P.A : 35150-039\*
  5. PRODUCT SPECIFICATION : PS-35150-003



NO	PRODUCT		MATERIAL
	PART NO	COLOR	DESCRIPTION
1	35150-0310	NATURAL	POLYESTER (PBT) (UL94V-0)
2	35150-0314	BLUE	
3	35150-0319	NATURAL	
4	35150-2319	RED	PC/PET (UL94V-0)
5	35150-3319	YELLOW	
6	35150-4319	BLUE	

<b>REVISED</b>	EC NO: KOR2010-0092	2010/01/14
	DRWN: JHPARK01	2010/01/14
	CHKD: WY. YANG	2010/01/14
	APPR: YUNSIKKIM	2010/01/14

QUALITY SYMBOLS ▽=0 ◻=0	GENERAL TOLERANCES (UNLESS SPECIFIED)		
		mm	INCH
	4 PLACES	± ---	± ---
	3 PLACES	± ---	± ---
	2 PLACES	± ---	± ---
1 PLACE	± 0.3	± ---	
ANGULAR ± 1 °			
DRAFT WHERE APPLICABLE MUST REMAIN WITHIN DIMENSIONS			

DIMENSION STYLE <b>MM ONLY</b>		SCALE <b>1:1</b>	DESIGN UNITS <b>METRIC</b>	THIRD ANGLE PROJECTION
DRAWN BY JS.KANG	DATE	TITLE <b>7.3 PITCH W/W CONN MALE HSG-3P(W/EAR)</b>		
CHECKED BY	DATE	APPROVED BY		
MATERIAL NO. <b>SEE TABLE</b>		DOCUMENT NO. <b>SD-35150-031*</b>		SHEET NO. <b>1 OF 01</b>
THIS DRAWING CONTAINS INFORMATION THAT IS PROPRIETARY TO MOLEX INCORPORATED AND SHOULD NOT BE USED WITHOUT WRITTEN PERMISSION				