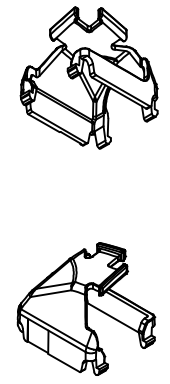
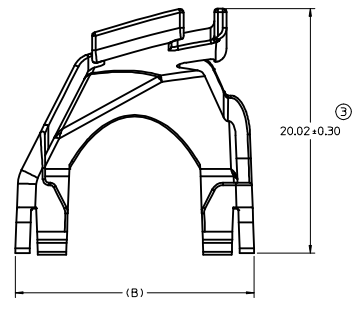
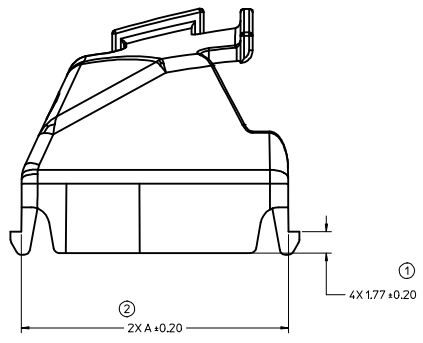
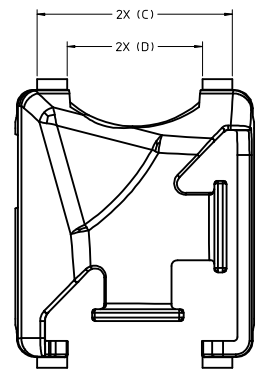


- NOTES: VALID UNLESS OTHERWISE SPECIFIED
- GENERAL:
 - APPLICATION SPECIFICATION SEE: AS-160014-001
 - PRODUCT SPECIFICATION SEE: PS-160014-001
 - PACKAGING SPECIFICATION PER MOLEX DRAWING: PK-31302-266
 - PARTS MUST BE IN COMPLIANCE TO MOLEX CHEMICAL SUBSTANCES FOR PRODUCTS AND PACKAGING SPECIFICATION: ES-40000-5016
 - DATA MUST BE SUBMITTED UNDER THE MOLEX PART NUMBER TO IMDS (COMPANY ID#13255)
 - FLAMMABILITY REQUIREMENT: PER ISO3795 OR GMW3191
 - BURN RATE 100 mm/MIN MAXIMUM
 - MATERIAL MUST BE SELF EXTINGUISHING
 - DESIGN - MATERIALS:
 - MATERIAL: SPS/PA66-GF20
25% MAX REGRIND BY WEIGHT
COLOR: SEE BOM TABLE
 - VOLUME: SEE BOM TABLE (ESTIMATED)
 - DESIGN - GEOMETRY:
 - ALL GRAPHIC DATA IS BASIC (NO TOLERANCE) AND MUST BE TAKEN FROM THE DATA FILE AT ITS LATEST REVISION.
 - PRODUCT DESIGN MODEL NUMBER(S): EM-160030-0001 & EM-160030-0005
 - GEOMETRIC DIMENSIONS AND TOLERANCES PER ASME Y14.5M-2009
 - GENERAL TOLERANCES:
 - LINEAR: PER DIN 16901 - PRECISION ENGINEERING
 - ANGULAR: ±3°
 - EDGES AND UNDIMENSIONED DETAILS PER ISO13715
 - CORNERS SHOWN AS SHARP TO BE R 0.2 MAX.
 - LETTERING SHALL BE 0.15 MAX RAISED IN 0.25 MAX RECESS PAD. THIS INCLUDES RECYCLING CODE, CAVITY ID, VENDOR IDENTIFICATION, AND CUSTOMER MATERIAL NUMBER. (for small parts: LETTERING SHALL BE 0.10 MAX RAISED IN 0.15 MAX RECESS PAD)
 - DESIGN - MANUFACTURING:
 - DRAFT TO BE WITHIN TOLERANCE. PLUS DRAFT - INDICATES A DIMENSION REPRESENTS THE SMALLEST SIZE OF A FEATURE. DRAFT WILL ADD MATERIAL. MINUS DRAFT - INDICATES A DIMENSION REPRESENTS THE LARGEST SIZE OF A FEATURE. DRAFT WILL REMOVE MATERIAL.
 - ALLOWABLE FLASH MAX 0.25 HIGH BY MAX 0.13 THICK.
 - ALLOWABLE SPLIT/PARTING LINE MISMATCH 0.2 MAX.
 - EJECTOR PIN MARKS TO BE FLUSH TO 0.25 MAX DEPRESSED. LOCATION MUST BE APPROVED BY PRODUCT ENGINEERING. EJECTOR PIN MARKS NOT PERMISSIBLE ON OR NEAR DATUM TARGET AREA.
 - ALLOWABLE GATE VESTIGE FLUSH TO 0.25 MAX PROTRUSION. LOCATION MUST BE APPROVED BY PRODUCT ENGINEERING
 - VISUAL DEFECTS SHALL MEET COSMETIC STANDARD PS-45499-002 (Class B)
 - NO EXTERNAL MOLD RELEASE AGENT ALLOWED DURING MANUFACTURING.

BOM TABLE						
MOLEX COMPONENTS PART NO.	COLOR	VOLUME (MMP ± 5%)	DIM "A"	DIM "B"	DIM "C"	DIM "D"
1600300005	DARK GRAY	818.8	21.87	19.54	16.00	11.08
1600300001	STONE GRAY	756.6	19.60	18.74	15.20	10.28

INITIAL RELEASE EC NO: UAU2017-0271 DRAWN: CONDON CHKD: APPR: KDEKOSKI 2016/09/26 2016/09/26	QUALITY SYMBOLS ∇=0 ∇=0 ∇=0	GENERAL TOLERANCES (UNLESS SPECIFIED) mm ANGULAR ±	DIMENSION STYLE MM ONLY	SCALE 5:1	DESIGN UNITS METRIC	THIRD ANGLE PROJECTION	TITLE WIRE DRESS COVER STAK50H	DRAWN BY KDEKOSKI	DATE 2014/12/18	CHECKED BY JCONDON	DATE 2014/12/18	APPROVED BY KDEKOSKI	DATE 2014/12/30	MATERIAL NO. CHARTED	DOCUMENT NO. SD-160030-001	SHEET NO. 1 OF 1
	THIS DRAWING CONTAINS INFORMATION THAT IS PROPRIETARY TO MOLEX INCORPORATED AND SHOULD NOT BE USED WITHOUT WRITTEN PERMISSION															

A	Release for Production SAP # 10797036 JCONDON 09/26/2016
1	INITIAL RELEASE SAP # 10669754 JCONDON 12/18/2014



- NOTES: VALID UNLESS OTHERWISE SPECIFIED
- GENERAL:
 - APPLICATION SPECIFICATION SEE: AS-160014-001
 - PRODUCT SPECIFICATION SEE: PS-160014-001
 - PACKAGING SPECIFICATION PER MOLEX DRAWING: PK-31302-266
 - PARTS MUST BE IN COMPLIANCE TO MOLEX CHEMICAL SUBSTANCES FOR PRODUCTS AND PACKAGING SPECIFICATION: ES-40000-5016
 - DATA MUST BE SUBMITTED UNDER THE MOLEX PART NUMBER TO IMDS (COMPANY ID#13255)
 - FLAMMABILITY REQUIREMENT: PER ISO3795 OR GMW3191
 - BURN RATE 100 mm/MIN MAXIMUM
 - MATERIAL MUST BE SELF EXTINGUISHING
 - DESIGN - MATERIALS:
 - MATERIAL: SPS/PA66-GF20
25% MAX REGRIND BY WEIGHT
COLOR: SEE BOM TABLE
 - VOLUME: SEE BOM TABLE (ESTIMATED)
 - DESIGN - GEOMETRY:
 - ALL GRAPHIC DATA IS BASIC (NO TOLERANCE) AND MUST BE TAKEN FROM THE DATA FILE AT ITS LATEST REVISION.
 - PRODUCT DESIGN MODEL NUMBER(S): EM-160030-0001 & EM-160030-0005
 - GEOMETRIC DIMENSIONS AND TOLERANCES PER ASME Y14.5M-2009
 - GENERAL TOLERANCES:
 - LINEAR: PER DIN 16901 - PRECISION ENGINEERING
 - ANGULAR: ±3°
 - EDGES AND UNDIMENSIONED DETAILS PER ISO13715
 - CORNERS SHOWN AS SHARP TO BE R 0.2 MAX.
 - LETTERING SHALL BE 0.15 MAX RAISED IN 0.25 MAX RECESS PAD. THIS INCLUDES RECYCLING CODE, CAVITY ID, VENDOR IDENTIFICATION, AND CUSTOMER MATERIAL NUMBER. (for small parts: LETTERING SHALL BE 0.10 MAX RAISED IN 0.15 MAX RECESS PAD)
 - DESIGN - MANUFACTURING:
 - DRAFT TO BE WITHIN TOLERANCE. PLUS DRAFT - INDICATES A DIMENSION REPRESENTS THE SMALLEST SIZE OF A FEATURE. DRAFT WILL ADD MATERIAL. MINUS DRAFT - INDICATES A DIMENSION REPRESENTS THE LARGEST SIZE OF A FEATURE. DRAFT WILL REMOVE MATERIAL.
 - ALLOWABLE FLASH MAX 0.25 HIGH BY MAX 0.13 THICK.
 - ALLOWABLE SPLIT/PARTING LINE MISMATCH 0.2 MAX.
 - EJECTOR PIN MARKS TO BE FLUSH TO 0.25 MAX DEPRESSED. LOCATION MUST BE APPROVED BY PRODUCT ENGINEERING. EJECTOR PIN MARKS NOT PERMISSIBLE ON OR NEAR DATUM TARGET AREA.
 - ALLOWABLE GATE VESTIGE FLUSH TO 0.25 MAX PROTRUSION. LOCATION MUST BE APPROVED BY PRODUCT ENGINEERING
 - VISUAL DEFECTS SHALL MEET COSMETIC STANDARD PS-45499-002 (Class B)
 - NO EXTERNAL MOLD RELEASE AGENT ALLOWED DURING MANUFACTURING.

BOM TABLE						
MOLEX COMPONENTS PART NO.	COLOR	VOLUME (MMP ± 5%)	DIM "A"	DIM "B"	DIM "C"	DIM "D"
1600300005	DARK GRAY	818.8	21.87	19.54	16.00	11.08
1600300001	STONE GRAY	756.6	19.60	18.74	15.20	10.28

INITIAL RELEASE EC NO: UAU2017-0271 DRAWN: CONDON CHKD: APPR: KDEKOSKI 2016/09/26 2016/09/26	QUALITY SYMBOLS ∇=0 ∇=0 ∇=0	GENERAL TOLERANCES (UNLESS SPECIFIED) mm ANGULAR ±	DIMENSION STYLE MM ONLY	SCALE 5:1	DESIGN UNITS METRIC	THIRD ANGLE PROJECTION	TITLE WIRE DRESS COVER STAK50H	MATERIAL NO. CHARTED	DOCUMENT NO. SD-160030-001	SHEET NO. 1 OF 1
	DRAWN BY: KDEKOSKI CHECKED BY: JCONDON APPROVED BY: KDEKOSKI DATE: 2014/12/18 DATE: 2014/12/18 DATE: 2014/12/30	4 PLACES 3 PLACES 2 PLACES 1 PLACE 0 PLACE	DRAFT WHERE APPLICABLE MUST REMAIN WITHIN DIMENSIONS	DRAWN BY: KDEKOSKI CHECKED BY: JCONDON APPROVED BY: KDEKOSKI DATE: 2014/12/18 DATE: 2014/12/18 DATE: 2014/12/30	TITLE: WIRE DRESS COVER STAK50H	DESIGN UNITS: METRIC	THIRD ANGLE PROJECTION	MATERIAL NO.: CHARTED	DOCUMENT NO.: SD-160030-001	SHEET NO.: 1 OF 1

A	Release for Production SAP # 10797036 JCONDON 09/26/2016
1	INITIAL RELEASE SAP # 10669754 JCONDON 12/18/2014