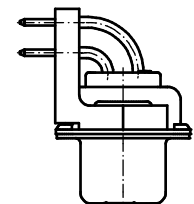
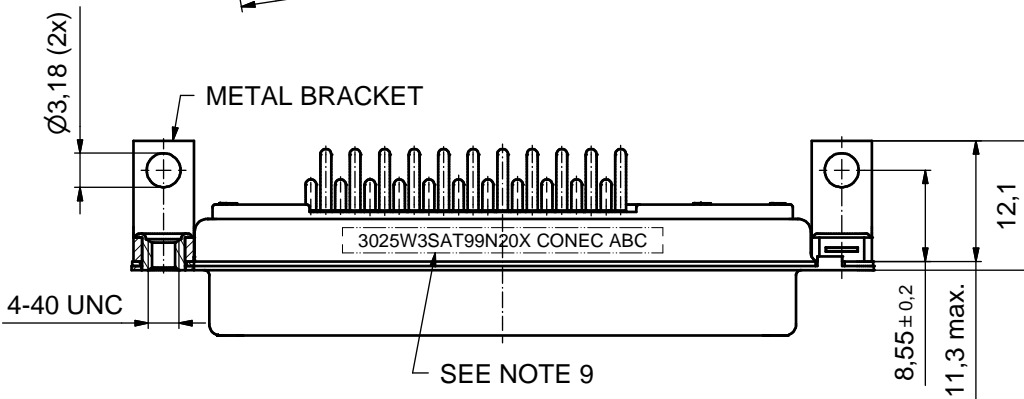
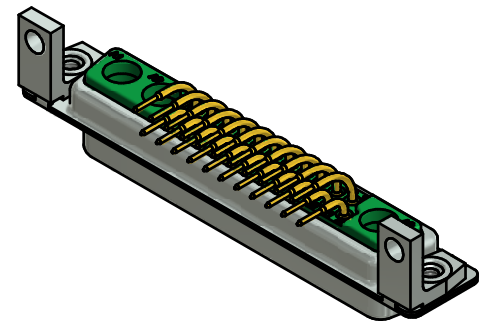
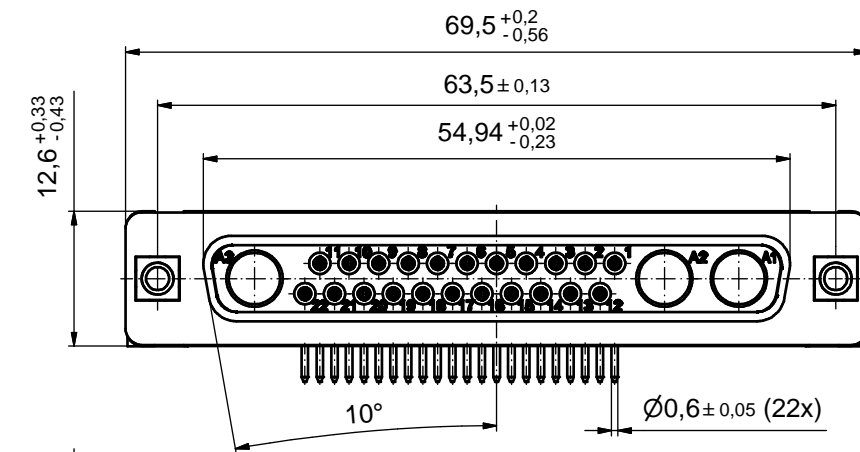
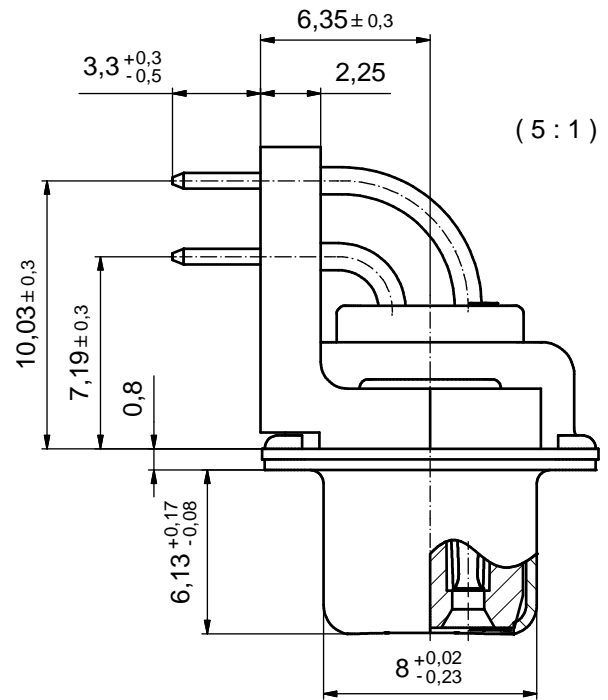


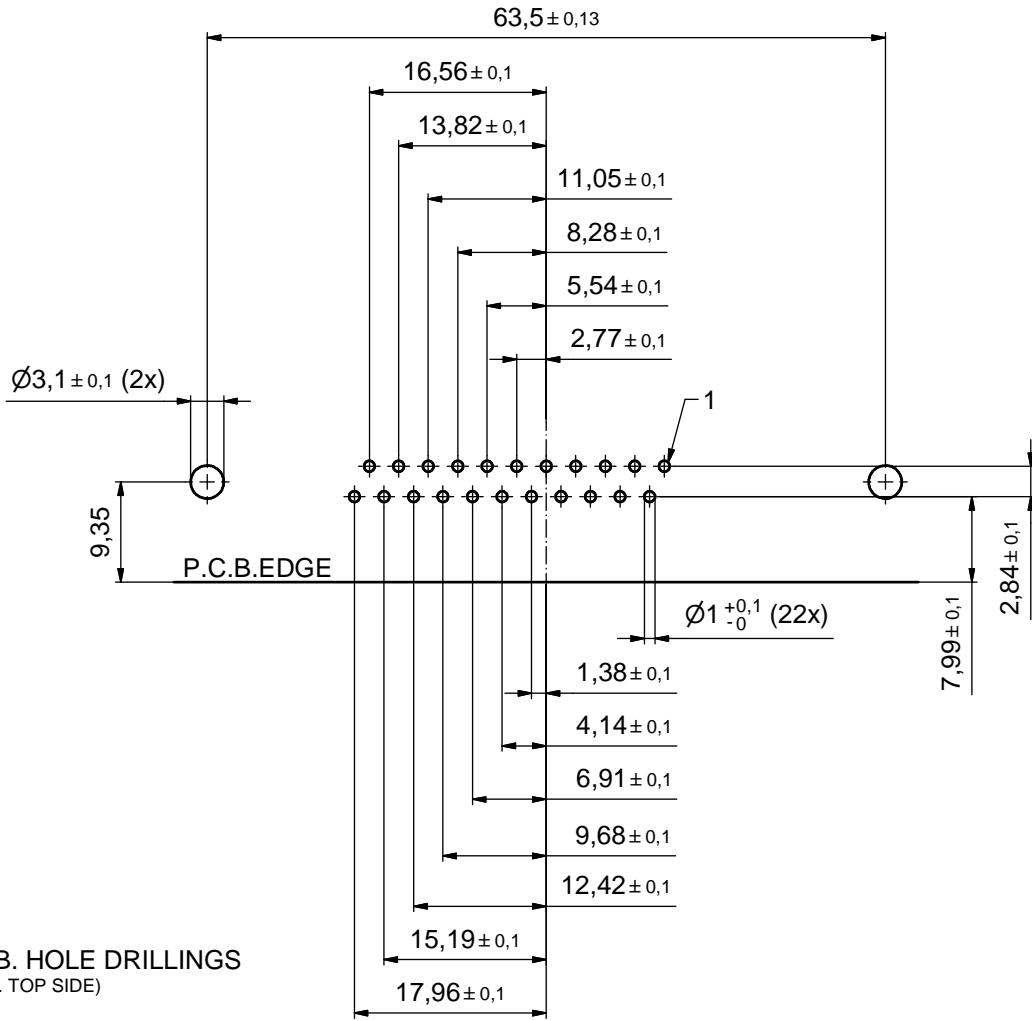
NOTES:

1. METAL SHELLS: STEEL; min. 315µm TIN over 40-80µm NICKEL
2. INSULATORS: PBT GF UL 94 V-0; GREEN
3. SIGNAL CONTACTS: COPPER ALLOY
PLATING: GOLD FLASH over NICKEL
4. NO CONTACTS ON POS. A1 - A3
5. METAL BRACKETS:
ZINC DIE CAST; 300µm COPPER/40-120µm NICKEL/120-200 TIN
6. THREADED INSERTS: COPPER ALLOY; min. 200µm TIN over 80µm NICKEL
7. P.C.B. HOLE DRILLINGS ON SHEET 2
8. MAXIMUM TORQUE VALUE FOR THREAD: 6 in.LB
9. CONNECTOR IS PART MARKED: 3025W3SAT99N20X CONEC ABC



Directive 2002/95/EC RoHS compliant

THIS DRAWING MAY NOT BE COPIED OR REPRODUCED IN ANY WAY, AND MAY NOT BE PASSED ON TO A THIRD PARTY WITHOUT WRITTEN PERMISSION. OWNERSHIP AND COPYRIGHT OF CONEC GmbH DO NOT ALTER CAD DRAWING BY HAND	tolerance		dim. in mm		scale: 2:1 (5:1)	
					material: SEE NOTES	
			date		title:	
			name		D-SUB COMBINATION FEMALE	
			drawn 29.10.13		25W3S	
			appd. 29.10.13		with threaded insert and metal bracket	
			norm		dwg no:	
			d-old		13K1A4496	
	a Original				DIN-A3	
	rev. description date name				sh: 1	
				part no: 3025W3SAT99N20X		



P.C.B. HOLE DRILLINGS
(P.C.B. TOP SIDE)

THIS DRAWING MAY NOT BE COPIED OR REPRODUCED IN ANY WAY, AND MAY NOT BE PASSED ON TO A THIRD PARTY WITHOUT WRITTEN PERMISSION. OWNERSHIP AND COPYRIGHT OF CONEC GmbH DO NOT ALTER CAD DRAWING BY HAND				tolerance		scale: 2:1	
					dim. in mm	material: SEE SHEET 1	
				date	name	title: P.C.B. HOLE DRILLINGS D-SUB COMBINATION FEMALE 90° 25W3S with threaded insert and metal bracket	
				drawn 29.10.13	Schmidt		
				appd. 29.10.13	Lehmenkühler		
				norm			
				d-old		dwg no:	
	a	Original		CONEC [®]		13K1A4496	DIN-A3
	rev.	description	date			name	sh: 2
						part no:	SEE SHEET 1