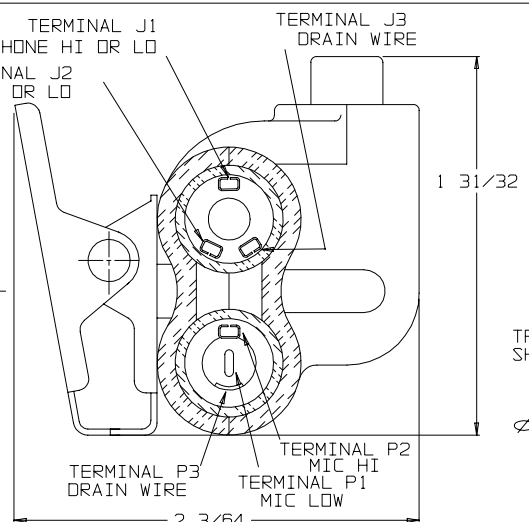
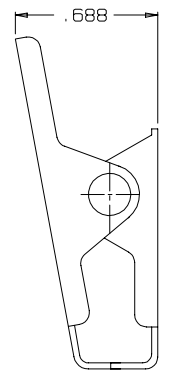
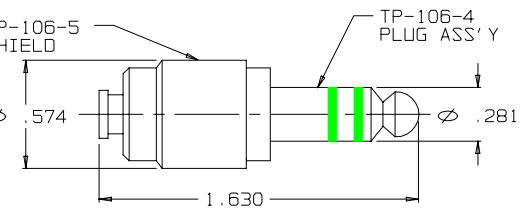
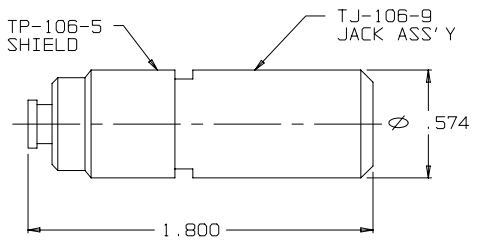


VIEW WITH HALF SHELL REMOVED

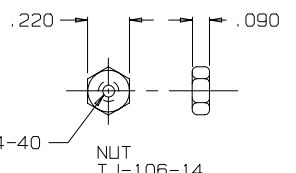


SECTION A-A

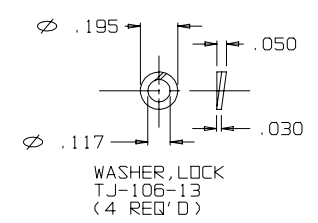
**C TJS-106**



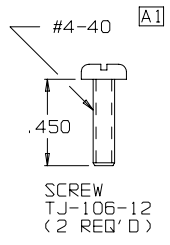
CLIP ASSY  
TJS-104-3A



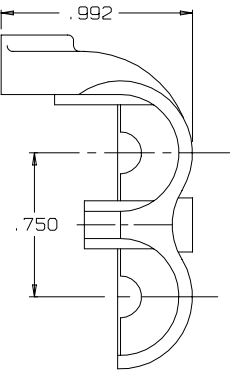
NUT  
TJ-106-14  
(2 REQ'D)



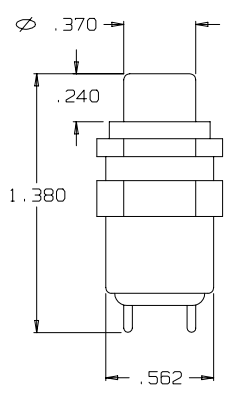
WASHER, LOCK  
TJ-106-13  
(4 REQ'D)



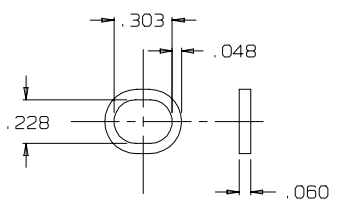
SCREW  
TJ-106-12  
(2 REQ'D)



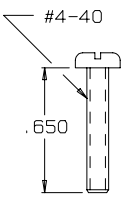
CHANNEL FOR SWITCH LEADS



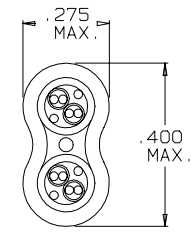
SWITCH  
NX301LB1B



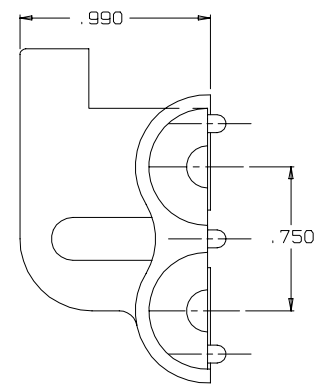
RING, STRAIN RELIEF  
TJ-106-10A



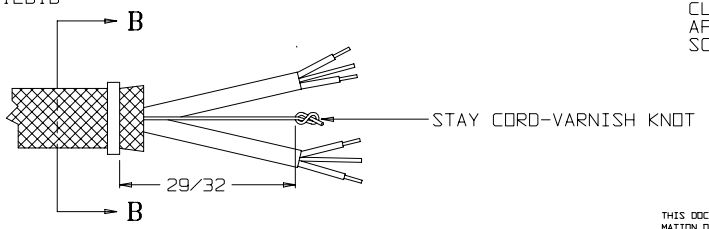
SCREW  
TJS-106-19  
(2 REQ'D)



SECTION B-B  
STRAIN RELIEF CLAMP TJ-106-10A AFTER CRIMPING  
SCALE: 4:1



SHELL, HALF TJS-106-2



STAY CORD-VARNISH KNOT

DWN. BY <i>EWT</i>	DATE 9/16/02	MATERIAL	
CHECKED BY	DATE	FINISH	
APPR. BY	DATE	WEIGHT	SCALE 2:1
UNLESS OTHERWISE SPECIFIED DIMENSIONS ARE IN INCHES TOLERANCES ON FRACTIONS DECIMALS ANGLES		TITLE JACK-TELEPHONE-BIAxIAL SHIELDED (6) CONDUCTOR WITH SWITCH	
DD NOT SCALE DWG. SHEET 1 OF 1		NEXUS STAMFORD, CONN	
		SIZE DWG. NO. C TJS-106	

THIS DOCUMENT CONTAINS PROPRIETARY INFORMATION OF NEXUS, INCORPORATED AND SUCH INFORMATION MAY NOT BE DISCLOSED TO OTHERS FOR ANY PURPOSE OR USED FOR ANY PURPOSE WITHOUT THE WRITTEN CONSENT OF NEXUS.