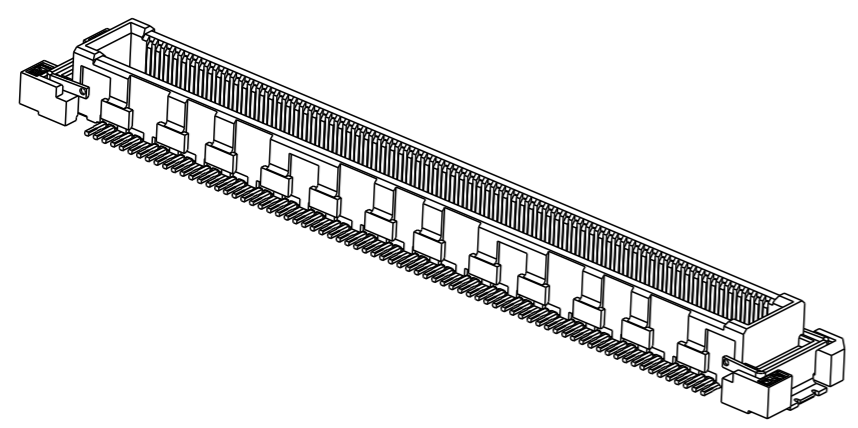
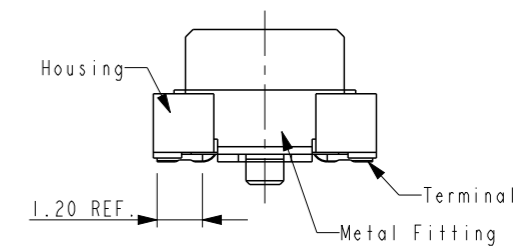
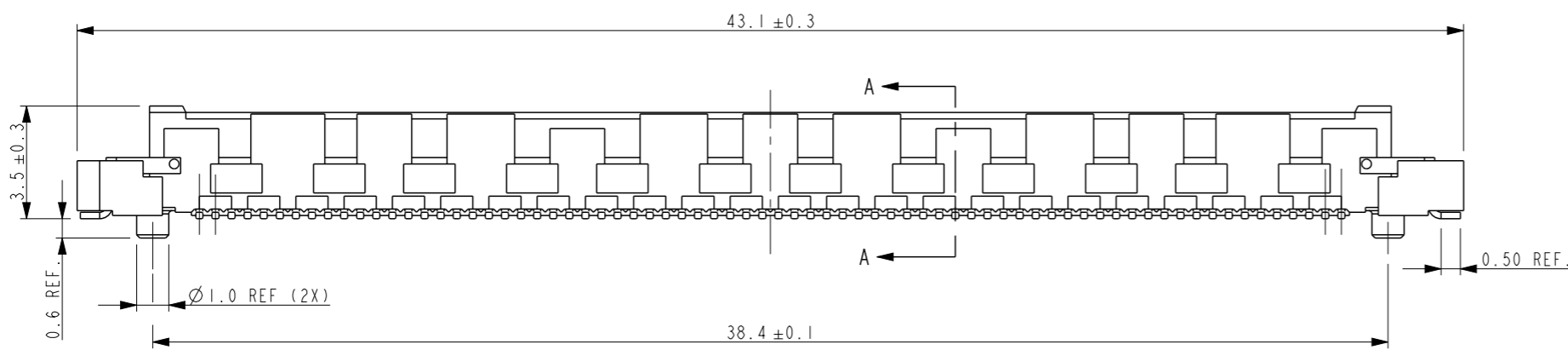
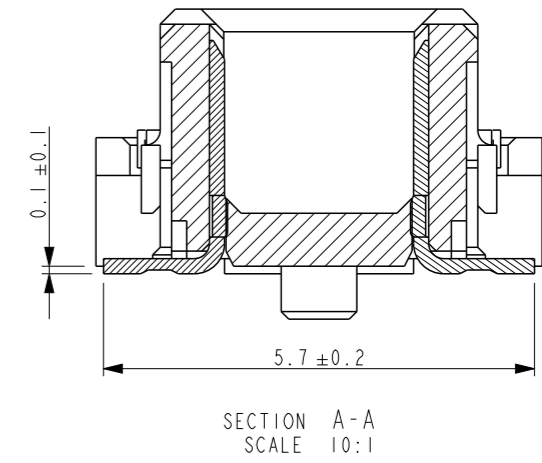
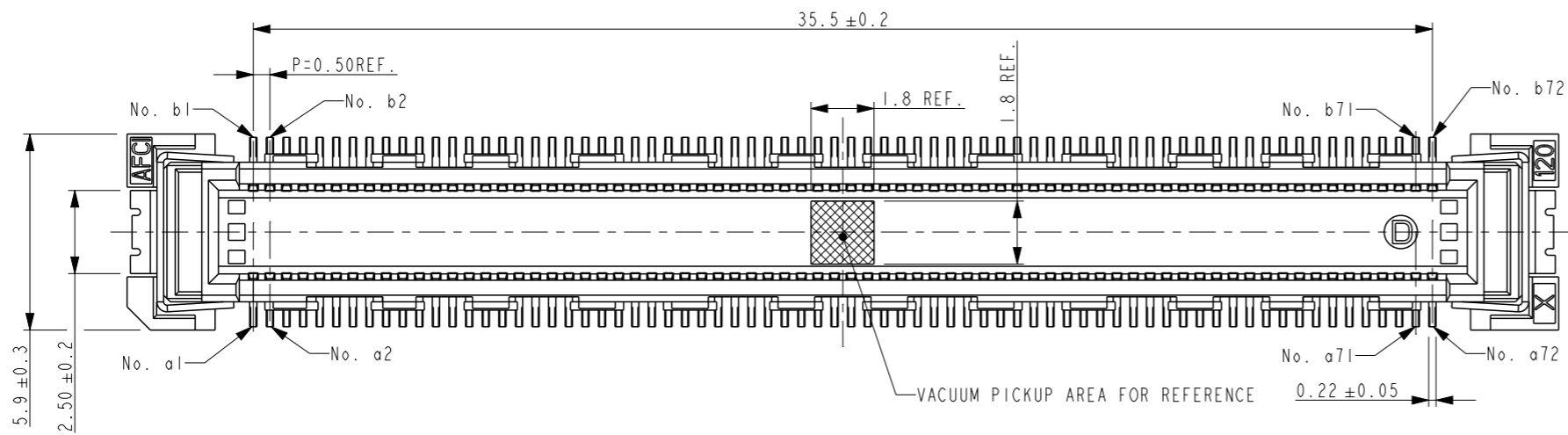


PRODUCT NO.
10147520-144-SHLF



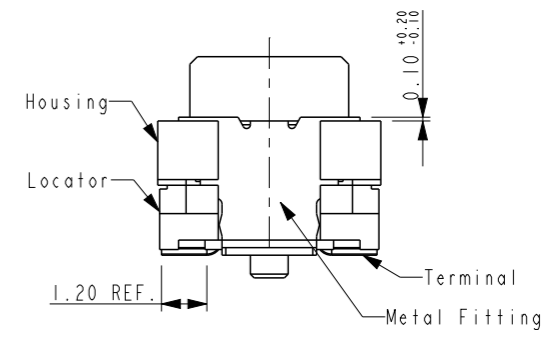
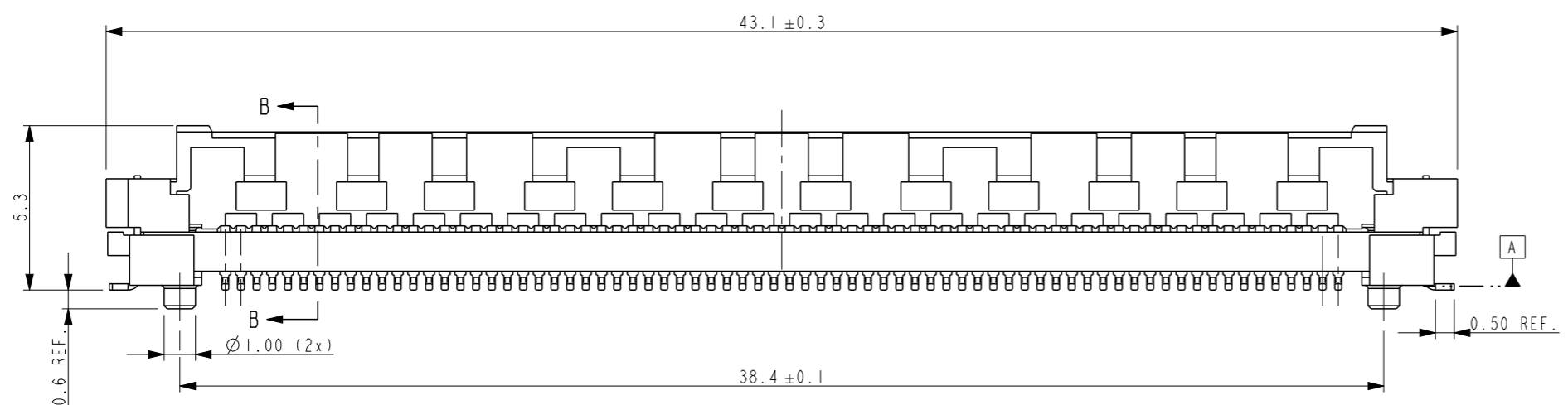
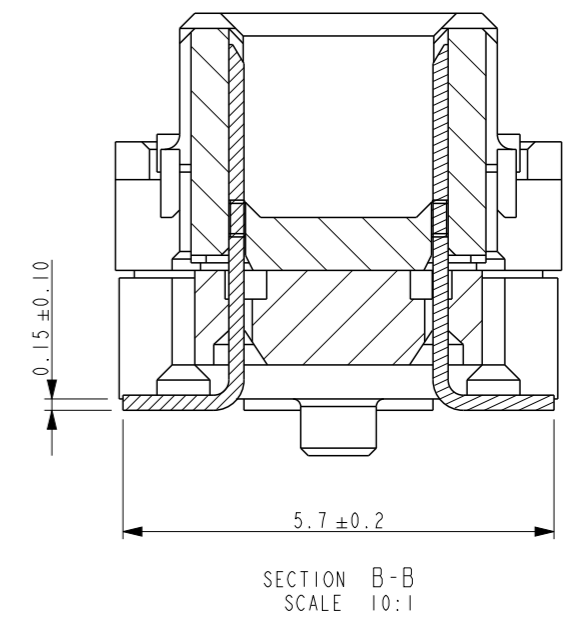
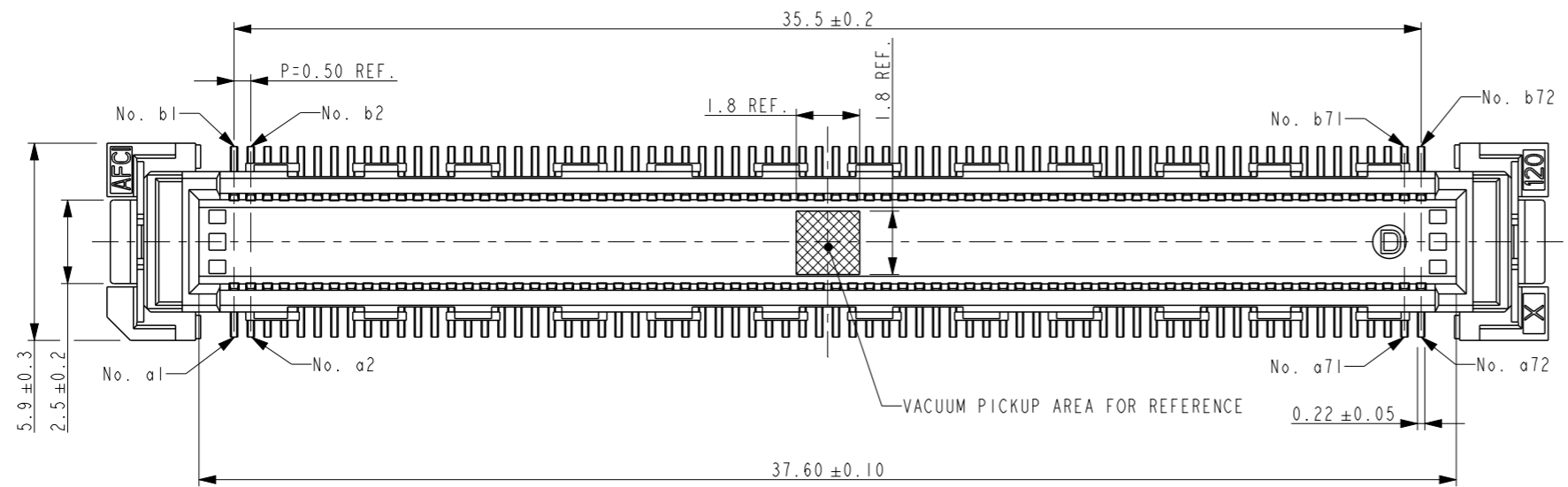
- NOTES:
- MATERIAL:
 - HOUSING: LCP BEIGE, UL94V-0
 - TERMINAL AND METAL FITTING: COPPER ALLOY.
 - PLATING:
 - GOLD FLASH ON SOLDER AREA;
 - 0.76 μM AU ON MATING AREA.
 - PRODUCTION SPECIFICATION GS-12-1529;
 - THIS HOUSING WILL WITHSTAND EXPOSURE TO 260°C PEAK TEMPERATURE FOR 20 SECONDS IN A IR REFLOW SOLDERING APPLICATION;
 - THIS PRODUCT MEETS EUROPEAN UNION DIRECTIVES AND OTHER COUNTRY REGULATIONS AS DESCRIBED IN GS-22-008;
 - SMT LEAD-COPLANARITY: 0.1 MAX.

Amphenol
FCi

© 2016 AFCI

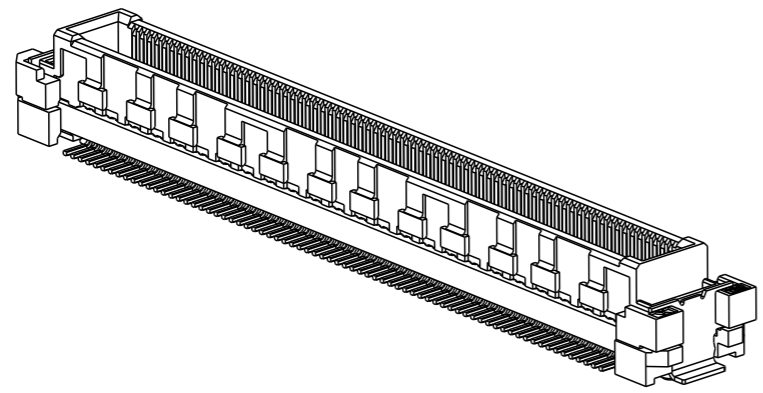
spec ref	*	dr	Li-Qing Lei	2019/05/24	projection	mm	size	A3	scale	5:1
tolerance std	TOLERANCES UNLESS OTHERWISE SPECIFIED	eng	Li-Qing Lei	2019/07/24			ecn no	-	rel level	Released
surface	linear	chr	-	-						
ASME Y14.5	angular	appr	Tim Yao	2019/07/24	cat. no.		Product - Customer Drw		sheet 1 of 3	
	0.X ±0.30									
	0.XX ±0.15									
	0.XXX ±0.05									
	0° ±2°									

PRODUCT NO.
10147520-144-THLF



Amphenol
FCi

© 2016 AFCI



- NOTES:
- MATERIAL:
 - HOUSING AND LOCATOR: LCP BEIGE. UL94V-0
 - TERMINAL AND METAL FITTING: COPPER ALLOY.
 - PLATING:
 - GOLD FLASH ON SOLDER AREA;
 - 0.76 μm AU ON MATING AREA.
 - PRODUCTION SPECIFICATION GS-12-1529;
 - THIS HOUSING WILL WITHSTAND EXPOSURE TO 260°C PEAK TEMPERATURE FOR 20 SECONDS IN A IR REFLOW SOLDERING APPLICATION;
 - THIS PRODUCT MEETS EUROPEAN UNION DIRECTIVES AND OTHER COUNTRY REGULATIONS AS DESCRIBED IN GS-22-008;
 - SMT LEAD-COPLANARITY: 0.1 MAX.

spec ref	*	dr	Li-Qing Lei	2019/05/24	projection	mm	size	A3	scale	5:1
tolerance std	TOLERANCES UNLESS OTHERWISE SPECIFIED	eng	Li-Qing Lei	2019/07/24			ecn no	-	rel level	Released
surface	linear	chr	-	-						
ASME Y14.5	angular	appr	Tim Yao	2019/07/24	product family	Header Connector	dwg no	10147520	rev	A
	0.X ±0.30					0.5P BTB				
	0.XX ±0.15									
	0.XXX ±0.05									
	0° ±2°									
		cat. no.	Product - Customer Drw		sheet 2 of 3					

