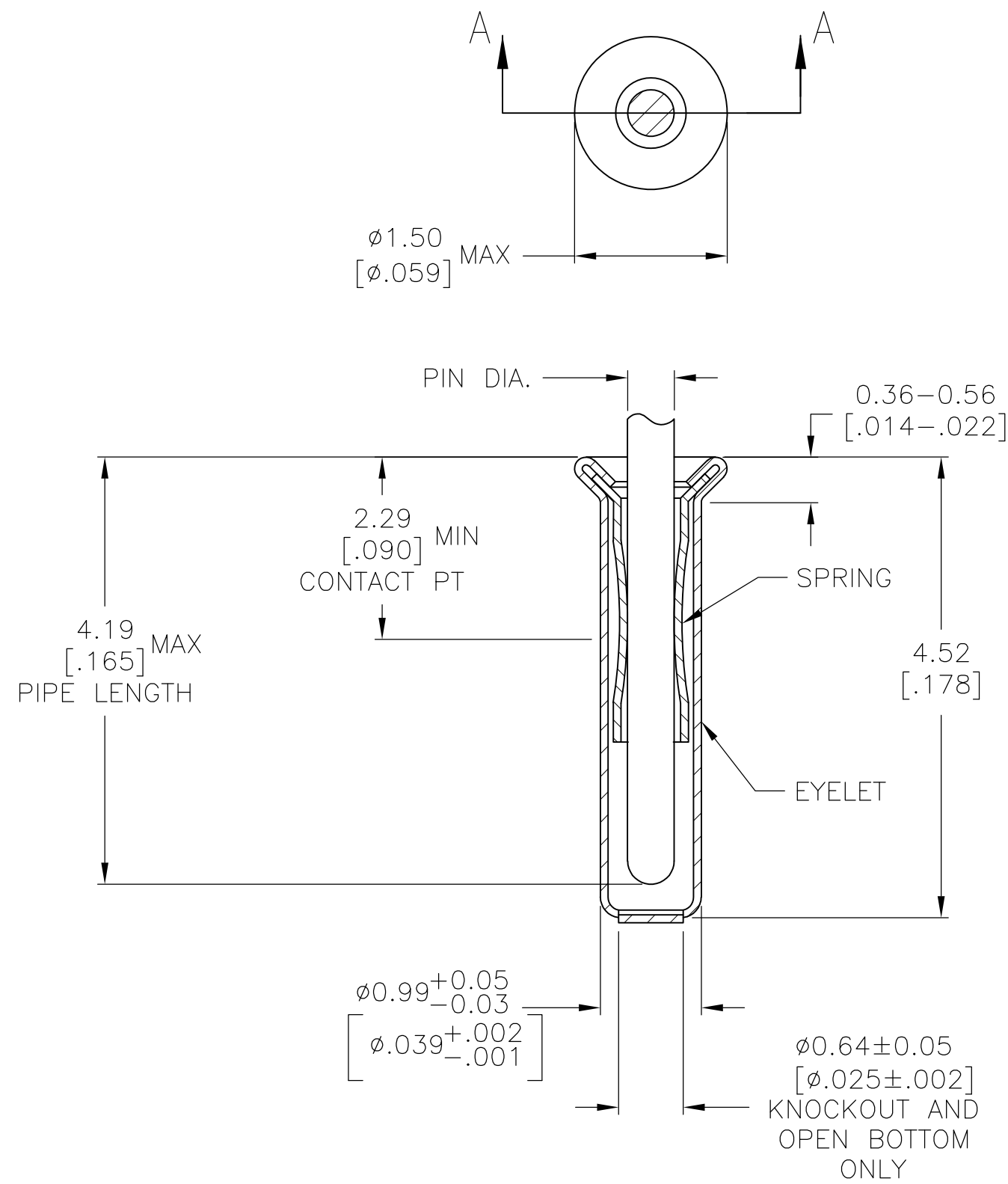


THIS DRAWING IS UNPUBLISHED. RELEASED FOR PUBLICATION
 © COPYRIGHT - By - ALL RIGHTS RESERVED.

| LOC | DIST | REVISIONS | | | | | |
|-----|------|-----------|-----|---------------------------|---------|-----|------|
| FT | 64 | P | LTR | DESCRIPTION | DATE | DWN | APVD |
| | | AA2 | | REVISED PER ECO-11-004835 | 11MAR11 | RK | HMR |



SECTION A-A

- 1. TIN PER MIL-T-10727 OR TIN LEAD .000254 [.000100] MIN THK.
- 2. GOLD PER MIL-G-45204, TYPE II, 0.00076 [.000030] MIN THK OVER NICKEL PER QQ-N-290 0.00028 [.000011] MIN THK ON CONTACT AREA.
- 3. GOLD FLASH PER MIL-G-45204, TYPE II, 0.13μm [.000005] MIN THK. OVER NICKEL PLATE PER QQ-N-290 0.51μm-1.52μm [.000020-.000060] EXT THK.
- 4. RECOMMENDED HOLE SIZE, PLATED OR UNPLATED:
 MACHINE INSERTION: 1.04±0.03 [.041±.001]
 HAND INSERTION: 1.04 ^{+0.10}/_{-0.00} [.041^{+.004}/_{-.000}]
- 5. APPLICATION TOOL PART NUMBER:
 MACHINE NO. 682127-2
 INSERTION HEAD NO. 682039-1
- 6. TO INSURE PROPER SPRING TENSION DO NOT EXCEED A 0.10 [.004] DIFFERENCE IN PIN DIA WHEN CHANGING TO A SMALLER PIN.
- 7. BOTTOM PLUG KNOCKOUT TOOL PART NUMBER 69729 WITH TIP PART NUMBER 69728.
- 8. MATERIAL; SPRING: BERYLLIUM COPPER (QQ-C-533)
 EYELET: COPPER (QQ-C-576)

| SUPSD BY | OBSOLETE | OPEN | 0.33-0.51 [.013-.020] | TIN | GOLD | 2-332095-6 |
|---------------------|----------|-----------------------|-----------------------|------------|--------|------------|
| 1-332095-9 | KNOCKOUT | 0.41-0.48 [.016-.019] | TIN | 2-332095-5 | | |
| | OBSOLETE | CLOSED | | | | 2-332095-4 |
| | OBSOLETE | OPEN | 0.33-0.51 [.013-.020] | GOLD | | 2-332095-3 |
| | | KNOCKOUT | | | | 2-332095-2 |
| | | CLOSED | | | | 2-332095-1 |
| SUPSD BY 2-332095-6 | OBSOLETE | OPEN | 0.33-0.41 [.013-.016] | TIN | | 2-332095-0 |
| | OBSOLETE | KNOCKOUT | 0.33-0.51 [.013-.020] | TIN | | 1-332095-9 |
| SUPSD BY 2-332095-4 | OBSOLETE | CLOSED | | | | 1-332095-8 |
| SUPSD BY 2-332095-3 | OBSOLETE | OPEN | 0.33-0.41 [.013-.016] | GOLD | | 1-332095-7 |
| SUPSD BY 2-332095-2 | OBSOLETE | KNOCKOUT | | | | 1-332095-6 |
| SUPSD BY 2-332095-1 | OBSOLETE | CLOSED | | | | 1-332095-5 |
| | OBSOLETE | CLOSED | 0.33-0.51 [.013-.020] | TIN | TIN | 1-332095-2 |
| SUPSD BY 1-332095-2 | OBSOLETE | CLOSED | 0.33-0.41 [.013-.016] | | | 332095 |
| | | BOTTOM TYPE | RECOMMENDED PIN DIA | EYELET | SPRING | PART NO |
| | | | | FINISH | | |

| | | | | |
|--|---------------------|---------------------|---|-----------------|
| THIS DRAWING IS A CONTROLLED DOCUMENT. | | DWN R.TALLEY 4-5-91 | TE Connectivity | |
| DIMENSIONS: mm [INCHES] | | CHK - | NAME | |
| TOLERANCES UNLESS OTHERWISE SPECIFIED: | | APVD - | MINIATURE SPRING SOCKET ASSEMBLY SERIES 1 | |
| 0 PLC ± - | 1 PLC ± - | PRODUCT SPEC - | SIZE A2 | CAGE CODE 00779 |
| 2 PLC ± - | 3 PLC ± 0.20 [.008] | APPLICATION SPEC - | DRAWING NO C=332095 | RESTRICTED TO - |
| 4 PLC ± - | ANGLES ± - | WEIGHT - | SCALE 20:1 | SHEET 1 OF 1 |
| MATERIAL 8 | FINISH SEE TABLE | CUSTOMER DRAWING | REV AA2 | |