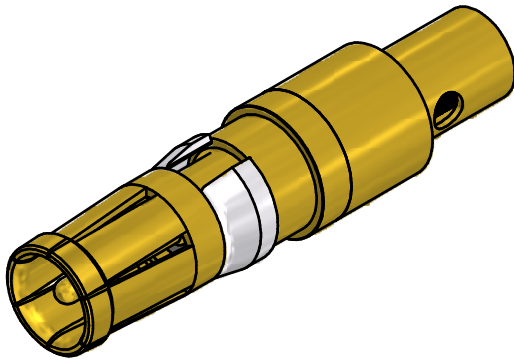
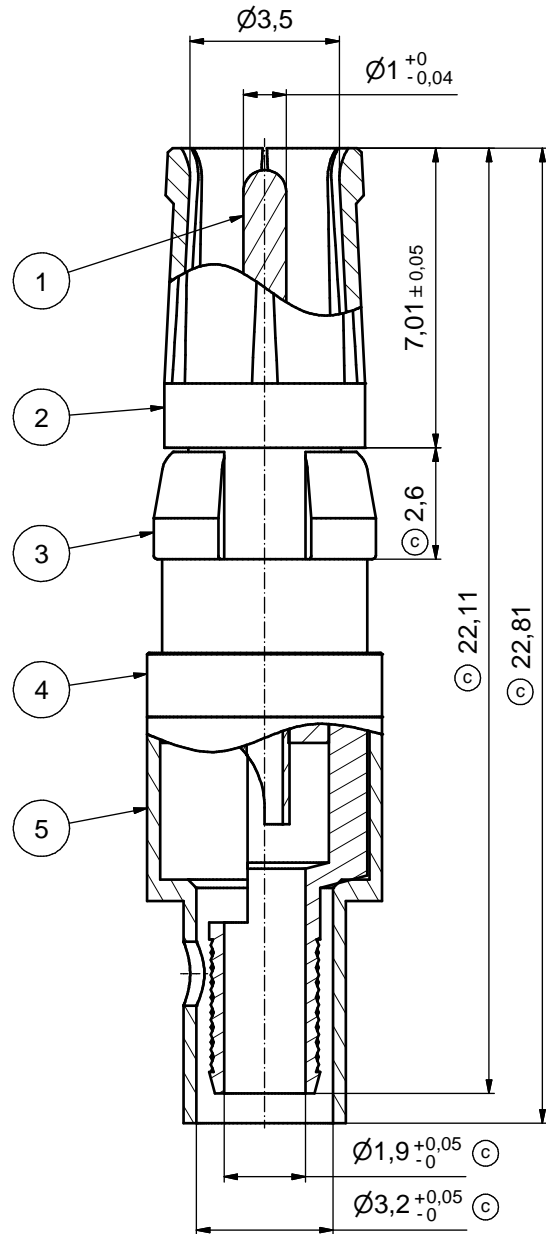
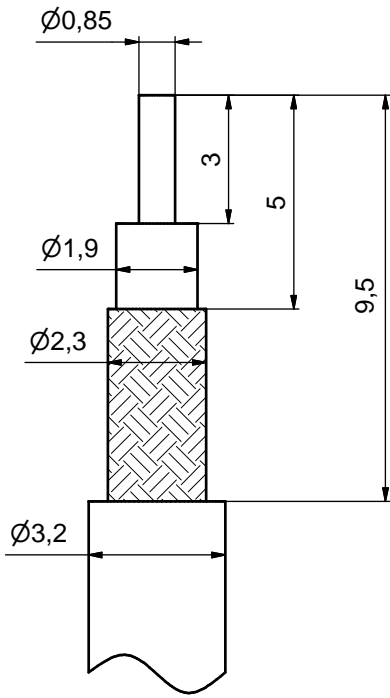


© STRIPPING DIMENSIONS



© ASSEMBLY TOOLING:

1. CENTER CONTACT:
SOLDERED
2. OUTER CONDUCTOR:
SOLDERED OR CRIMPED
USE CRIMP TOOL: 360X10519X
WITH TOOL INSERT: 360X11019X
INSERT CAVITY B: HEX 3.25/.128

Part no.	Finish Pos.1	Finish Pos.2	Finish Pos.3	Finish Pos. 4/5
132J20029X	min. 50µin HARD GOLD over min. 50µin NICKEL	min. 30µin HARD GOLD over min. 50µin NICKEL	NICKEL PLATED	GOLD FLASH over NICKEL
132C20029X	min. 30µin HARD GOLD over min. 50µin NICKEL	min. 30µin HARD GOLD over min. 50µin NICKEL	NICKEL PLATED	GOLD FLASH over NICKEL
132A20029X	GOLD FLASH over NICKEL	GOLD FLASH over NICKEL	NICKEL PLATED	GOLD FLASH over NICKEL

Directive 2002/95/EC RoHS compliant

THIS DRAWING MAY NOT BE COPIED OR REPRODUCED IN ANY WAY, AND MAY NOT BE PASSED ON TO A THIRD PARTY WITHOUT WRITTEN PERMISSION. OWNERSHIP AND COPYRIGHT OF CONEC GmbH DO NOT ALTER CAD DRAWING BY HAND	tolerance		dim. in mm		scale: 8:1	
					material: COPPER ALLOY (Pos. 1 - 5)	
			date	name	title: (b) COAXIAL CONTACT SOCKET 50 OHM	
			drawn	27.04.00	A. Mickenbecker	inner conductor for solder termination
			appd.	27.04.00	E. Mickenbecker	outer conductor for solder or crimp termination
8 x c	Ä4576	11.12.12	HS	d-old	dwg no: 13K2IAQA	
1 x b	Ä2535	18.07.06	Lehmen		DIN-A3	
a	Original				sh: 1	
rev.	description	date	name	part no: see table		

