



L.T.F.

DOB AC Line Voltage LED Boards



Dimmable 20W Linear 296x45mm QLUXDOBAL29620W84LED DOB Series

QLUX DOB



Wattage	20W
Input	120V AC 50/60 Hz
CRI	94+
CCT Options	2400K - 5000K
Custom CCT	Available
Size	296x45mm
Dimming	ELV, Triac
Optional Dimming	0-10V
Beam Angle	160°



RoHS



FEATURES

- Exceeds California Title 24 requirements
- AC line voltage driver on board module;
No external drivers or transformers required
- High efficacy lumen output: >90 lm/W
- Smooth dimming with ELV & Triac dimmers
- Optional 0-10V dimming
- 220-240V, 277V AC input with optional voltage converter
- LM-80 compliant LEDs
- High Color Rendering Index (CRI) 94+

- Tight binning 3 Step Mac Adam Ellipses
- Low heat generation, easy thermal management
- L70 > 60,000 Hours



APPLICATIONS

- New or retrofit OEM fixtures
- Indoor or outdoor applications
- Architectural and commercial
- Flush mount and recessed fixtures



AVAILABLE CONFIGURATIONS

Model Number	Suffix	CRI	CCT
QLUXDOBAL29620W84LED	- 822	80+	2200K
QLUXDOBAL29620W84LED	- 825		2500K
QLUXDOBAL29620W84LED	- 827		2700K
QLUXDOBAL29620W84LED	- 830		3000K
QLUXDOBAL29620W84LED	- 832		3200K
QLUXDOBAL29620W84LED	- 835		3500K
QLUXDOBAL29620W84LED	- 840		4000K
QLUXDOBAL29620W84LED	- 850		5000K

Model Number	Suffix	CRI	CCT
QLUXDOBAL29620W84LED	- 922	90+	2200K
QLUXDOBAL29620W84LED	- 925		2500K
QLUXDOBAL29620W84LED	- 927		2700K
QLUXDOBAL29620W84LED	- 930		3000K
QLUXDOBAL29620W84LED	- 932		3200K
QLUXDOBAL29620W84LED	- 935		3500K
QLUXDOBAL29620W84LED	- 940		4000K
QLUXDOBAL29620W84LED	- 950		5000K

Custom CCT available

[1] Luminous flux and efficacy are typical value, measured by an integrated sphere at 25°C, tolerance: ± 10%;

[2] Ra/CRI is measured with tolerance: ± 2;

[3] Tolerance of power: ± 1W.



L.T.F.

DOB AC Line Voltage LED Boards

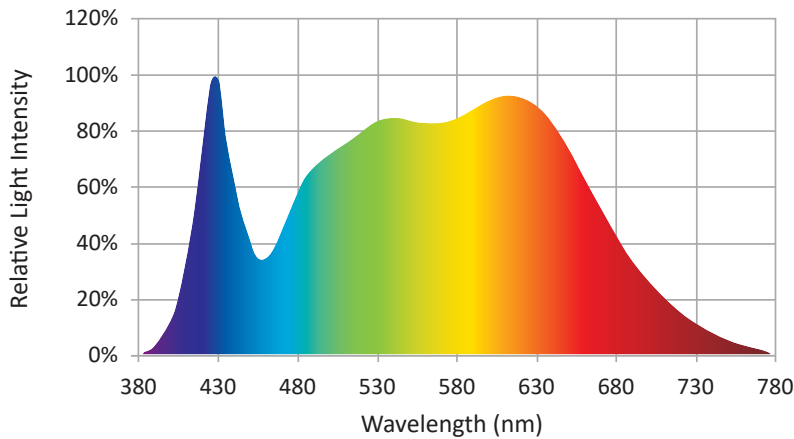


Dimmable 20W Linear 296x45mm QLUXDOBAL29620W84LED DOB Series

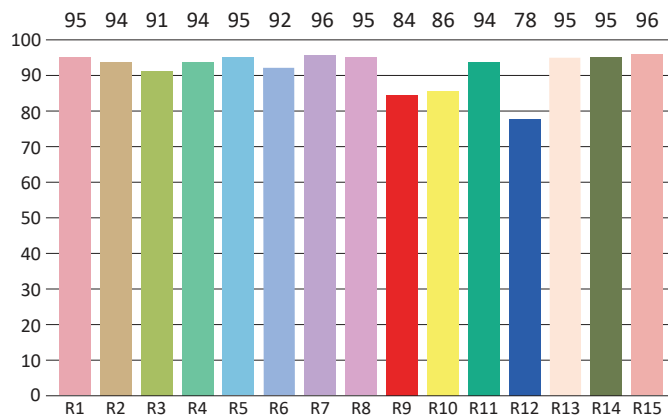
CIE Colorimetric Parameters*	
Chromaticity Coordinates	x=0.3758 y=0.3723
CCT	4097K
Peak Wavelength	448.5nm
Dominant Wavelength	579.1nm
Rendering Index	94.2
Color Ratio	R=19.7%, G=77.8%, B=2.5%
Half Bandwidth	26.4nm
Color Purity	24.5%

* Test result shown based on 4000K CCT, 90 CRI model

SPECTRORADIOMETRIC CHARACTERISTICS



CRI TEST RESULTS



R1=95	R2=94	R3=91	R4=94	R5=95	R6=92	R7=96	R8=95
R9=84	R10=86	R11=94	R12=78	R13=95	R14=95	R15=96	

* Test result shown based on 4000K CCT, 90 CRI model



L.T.F.

DOB AC Line Voltage LED Boards



Dimmable 20W Linear 296x45mm QLUXDOBAL29620W84LED DOB Series

Photometric Parameters*	
Luminous Flux:	2028.051lm
Radiant Power:	7584.6mW
Efficacy:	88.91lm/W

* Test result shown based on 4000K CCT, 90 CRI model

Electric Parameters	
Voltage	U=0.013V
Current	I=0.19A
Power	P=22.8W
Power Factor	PF=0.994

ABSOLUTE MAXIMUM RATINGS (Ta=25°C)

Parameter	Symbol	Value	Unit
Voltage	V in	132	Vac
Operating Temperature	---	-35~+50	°C
LED Solder Temperature	Ts	110	°C
Storage Temperature	Tstg	-40~+100	°C
ESD Sensitivity (HBM)	---	±4000	V
Surge	---	2500	Vac

MECHANICAL SPECIFICATIONS

