

MATERIALS AND FINISHES

COUPLING SLEEVE: BRASS
PLATED NICKEL

BODY: BRASS
PLATED TRI-M3

RETENTION CAP: BRASS
PLATED TRI-M3

INSULATORS: TEFLON

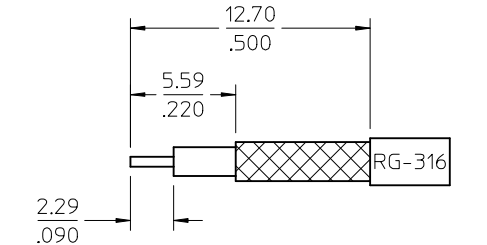
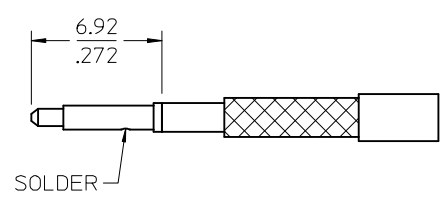
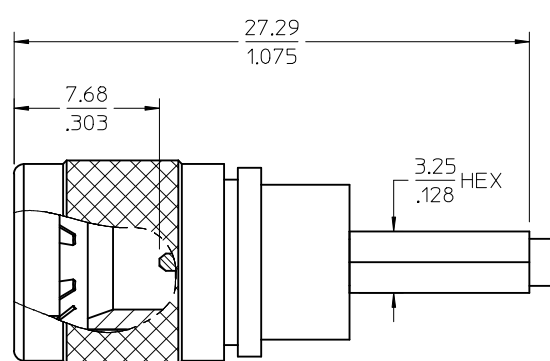
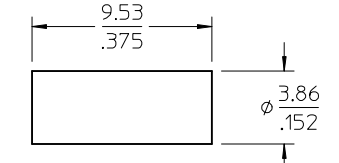
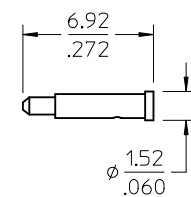
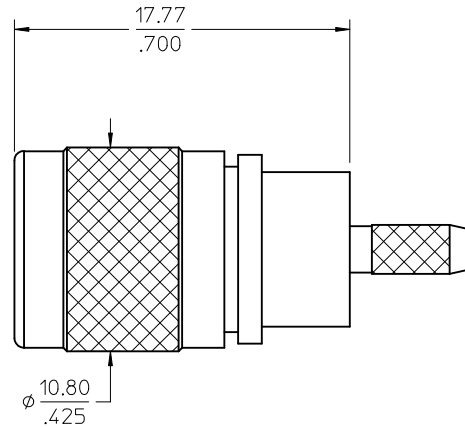
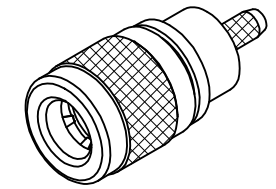
RETENTION SPRING: STAINLESS STEEL
PASSIVATED

GROUND SPRING: BERYLLIUM COPPER
PLATED GOLD

CONTACT: BRASS
PLATED GOLD

OVER HIGH PHOSPHOR NICKEL

CRIMP TUBE: BRASS
PLATED NICKEL



RECOMMENDED CABLE STRIP DIMENSION

73254-0091	ONE PIECE 73254-0090 PER BAG
73254-0090	TRAY
PART NO.	DESCRIPTION

CHG:	UPDATE PACKAGING FOR 73254-0090 PER RF15-E212
EC NO:	URF2015-0658
DRWNR/YEH	2015/05/25
CHKD:	
APPR: YCHENG	2015/05/29
REV	DESCRIPTION
1	

QUALITY SYMBOLS	GENERAL TOLERANCES (UNLESS SPECIFIED)
▽=0	mm INCH
▽=0	4 PLACES ± --- ± ---
▽=0	3 PLACES ± --- ± ---
	2 PLACES ± --- ± ---
	1 PLACE ± --- ± ---
	0 PLACE ± --- ± ---
	ANGULAR ± 2 °
	DRAFT WHERE APPLICABLE MUST REMAIN WITHIN DIMENSIONS

DIMENSION STYLE	SCALE	DESIGN UNITS	THIRD ANGLE PROJECTION
MM/IN	5:1	INCH	
DRAWN BY	DATE	TITLE	
SSS	2003/10/07	QMA PLUG STRAIGHT	
CHECKED BY	DATE	RG316 50 OHMS	
TEF	2003/10/07	QMA-PC, EWR-2187	
APPROVED BY	DATE	molex	
GMH	2003/10/07	SD-73254-009	
MATERIAL NO.	DOCUMENT NO.	SHEET NO.	
SEE TABLE		1 OF 1	

SIZE	THIS DRAWING CONTAINS INFORMATION THAT IS PROPRIETARY TO MOLEX INCORPORATED AND SHOULD NOT BE USED WITHOUT WRITTEN PERMISSION		
------	---	--	--