

THIS DRAWING IS UNPUBLISHED.

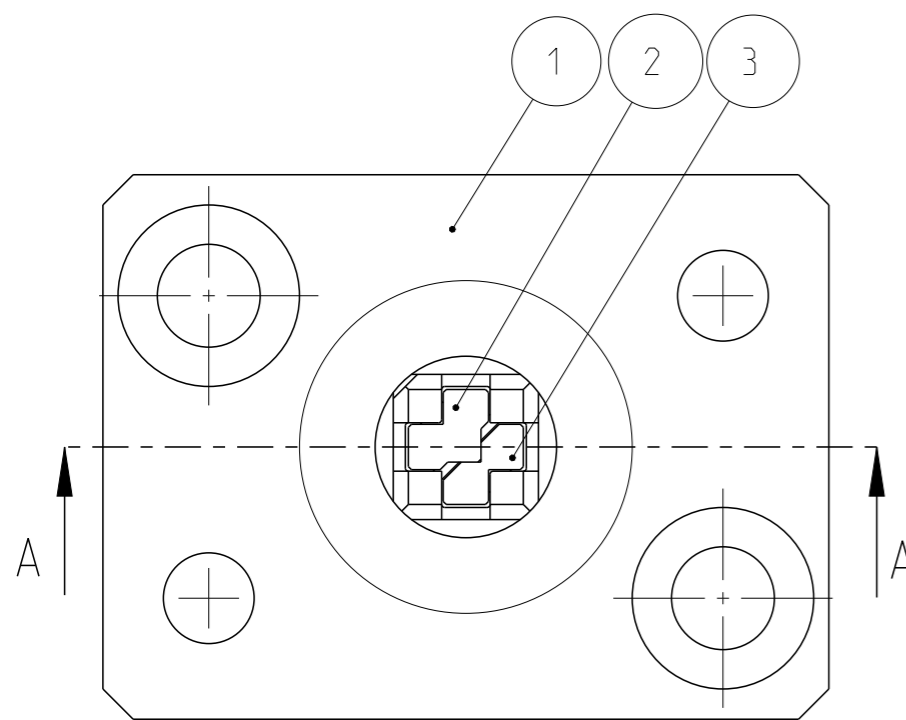
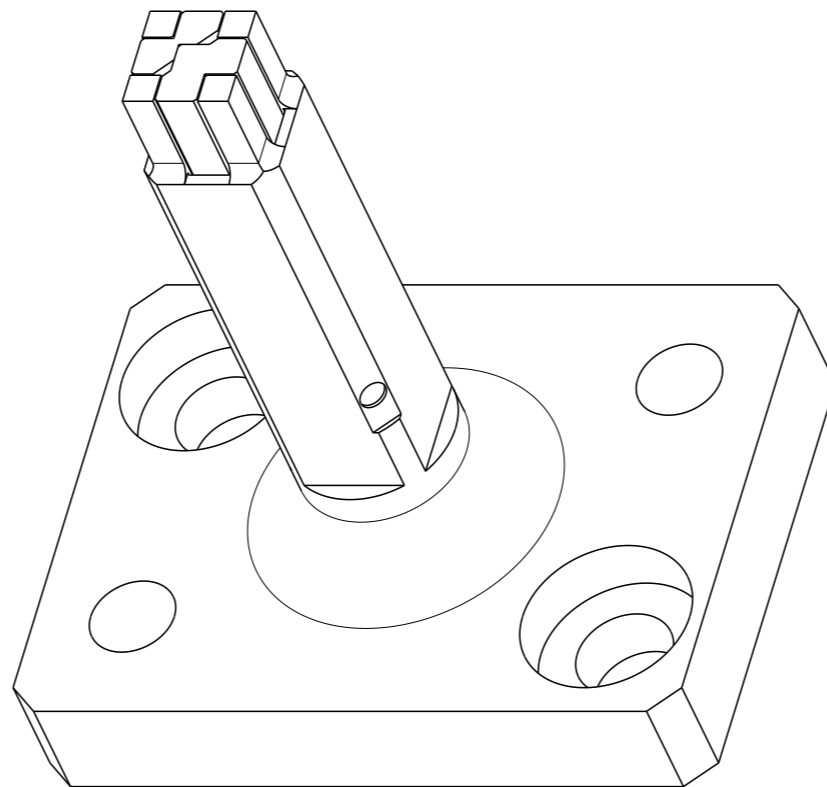
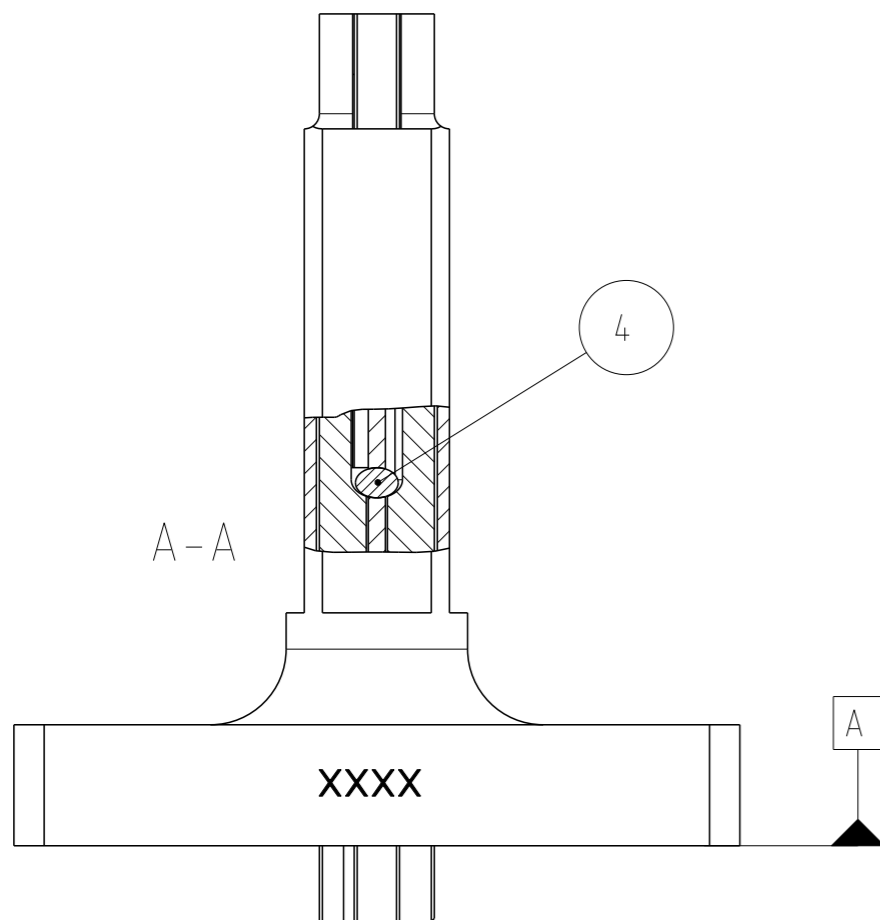
RELEASED FOR PUBLICATION

2013

REVISIONS

© COPYRIGHT 2013 BY Tyco Electronics AMP GmbH ALL RIGHTS RESERVED.

P	LTR	DESCRIPTION	DATE	DWN	APVD
	C	INITIAL RELEASE	16OCT2015	UR	SB
	D	REVISED PER ECR-16-003968	16MAR2016	GK	UR



XXXX marked by drawing number, revision & supplier symbol	XXXX Mit Zeichnungsnummer, Revision & Herstellerkürzel gekennzeichnet
---	---

POS	QTY	TE/PN	PART REV	DESCRIPTION	WEAR	SPARE
1	1	5-1372156-6	C	HUELSE sleeve	YES	YES
2	1	3-1372436-6	C	Stift Pinn	YES	YES
3	1	3-1372436-7	B	Stift Pinn	YES	YES
4	1	508368-8	A	Zyl.-Stift 1.0m6x5 DIN 6325 -	-	YES

THIS DRAWING IS A CONTROLLED DOCUMENT.		DWN G. Bilecki 12FEB2010				
DIMENSIONS: mm		CHK REUTER UWF 24JAN2013			NAME AMBOSSHUELSE ANVIL SLEEVE	
TOLERANCES UNLESS OTHERWISE SPECIFIED:		APVD SIEGFRIED B 24JAN2013				
		PRODUCT SPEC -			SIZE A3	
MATERIAL -		FINISH -	APPLICATION SPEC -	CAGE CODE -	DRAWING NO C-5-1372157-6	RESTRICTED TO -
Customer Drawing		WEIGHT -	SCALE 4:1	SHEET 1 OF 1	REV D	