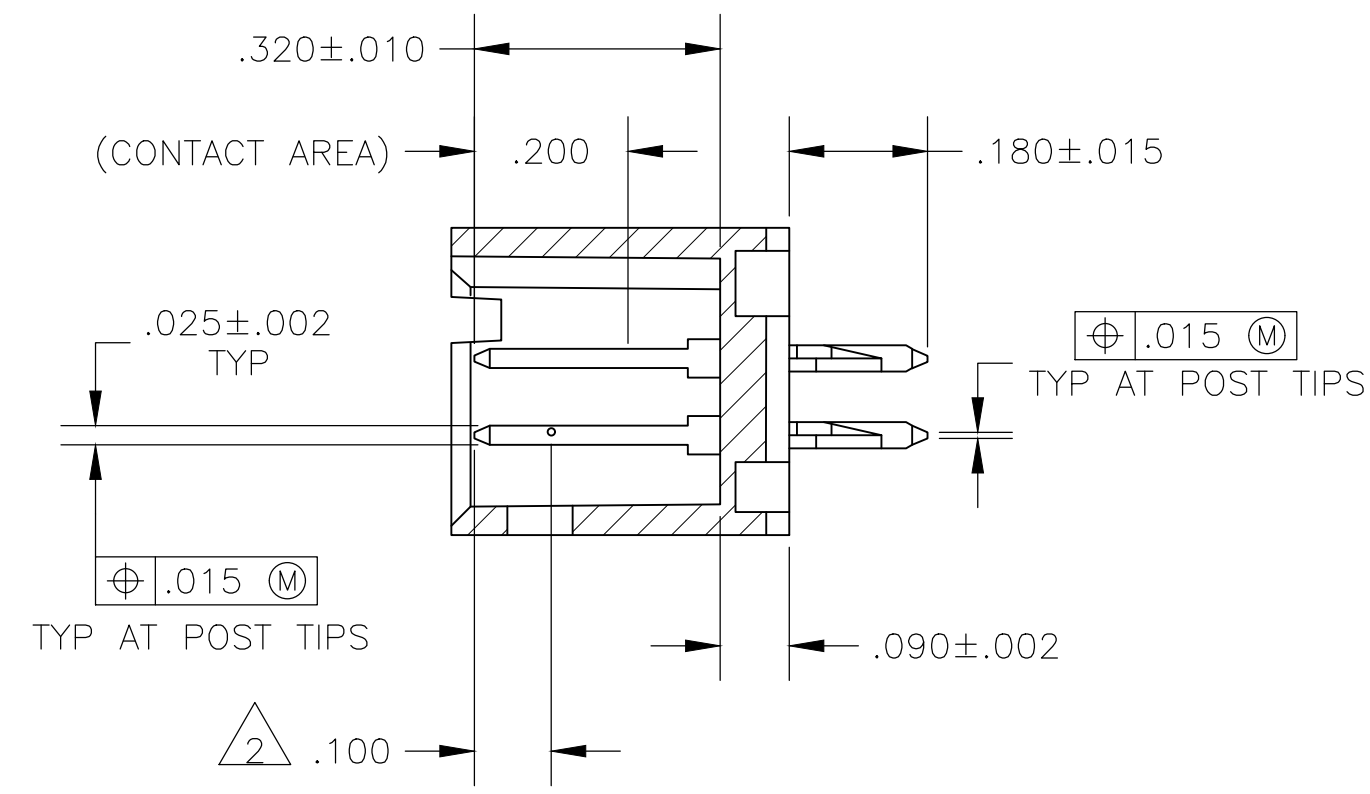
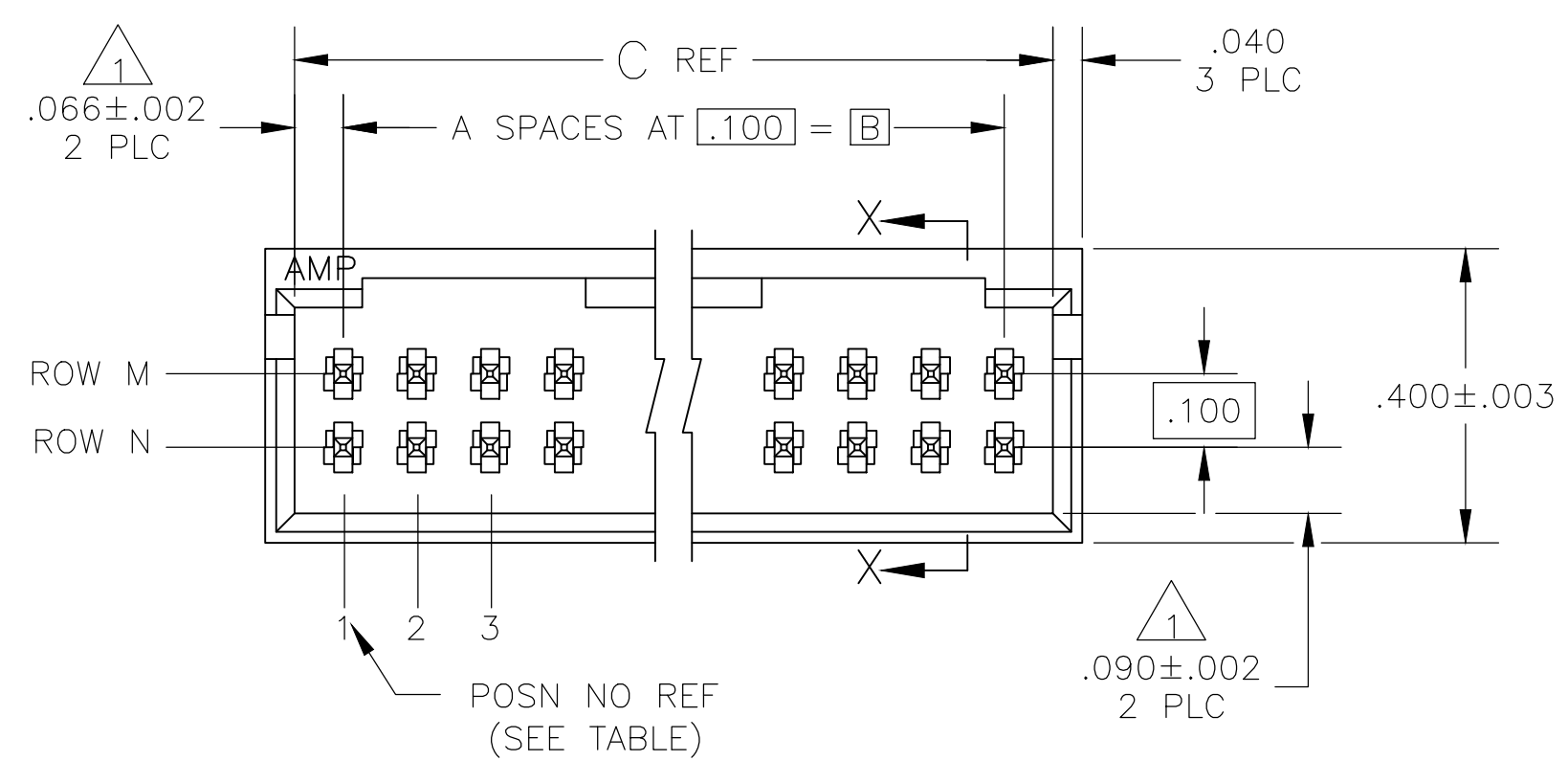
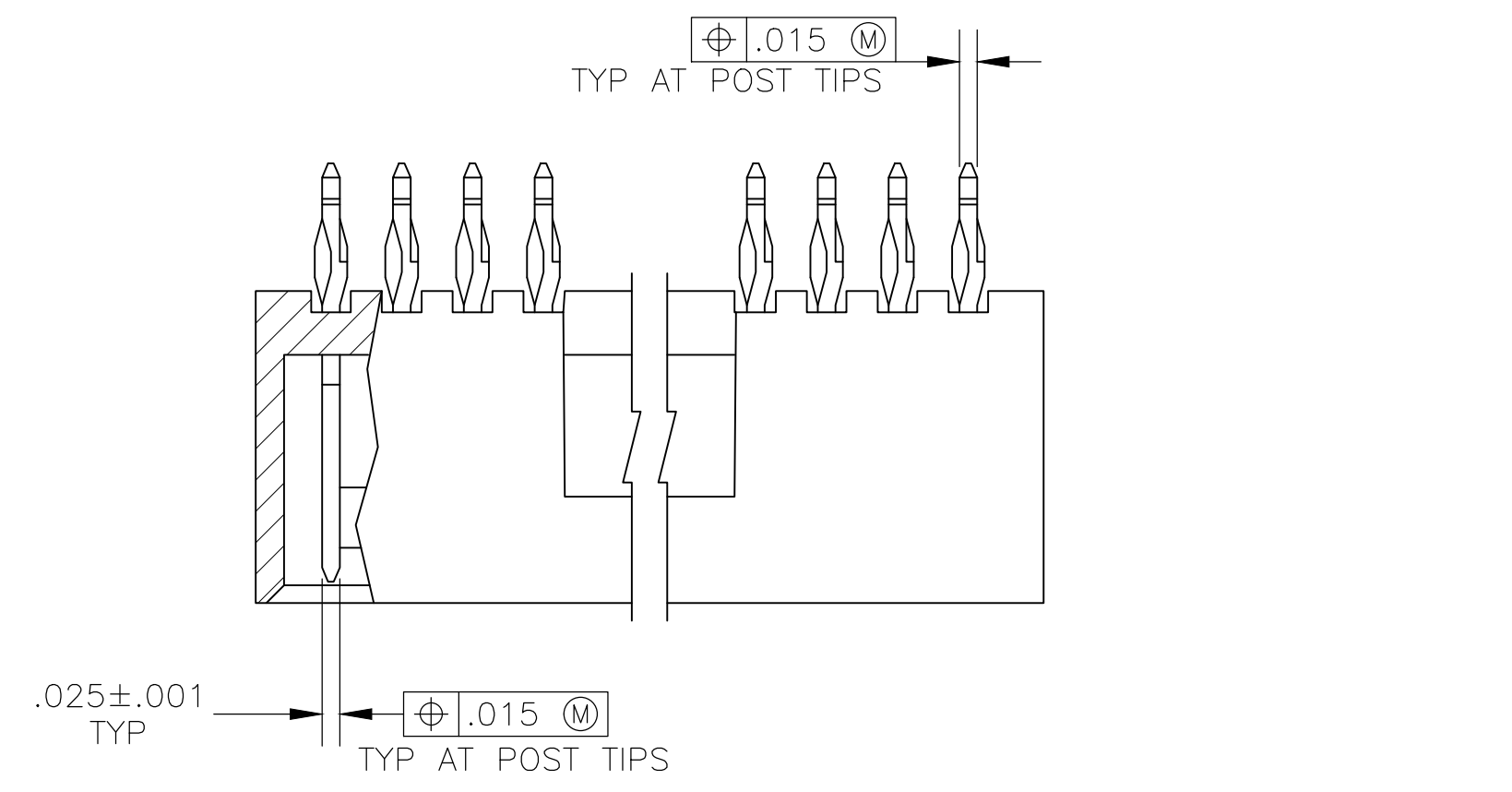
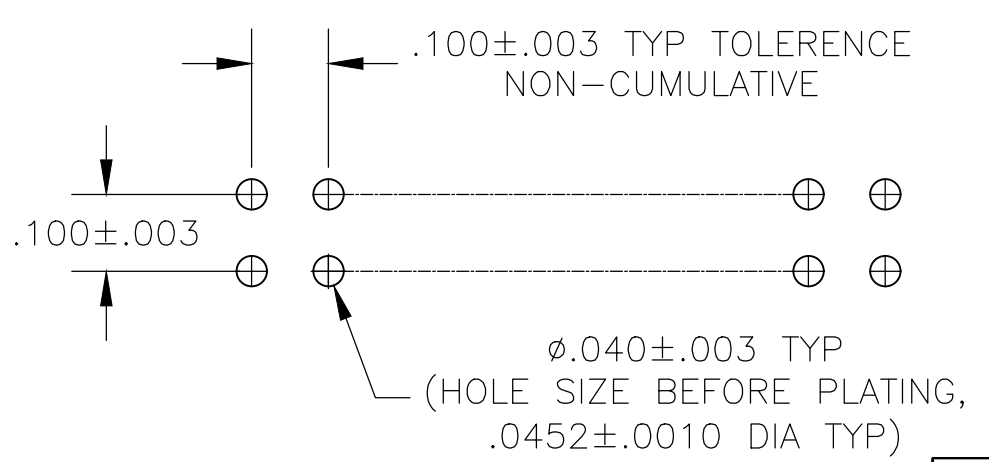
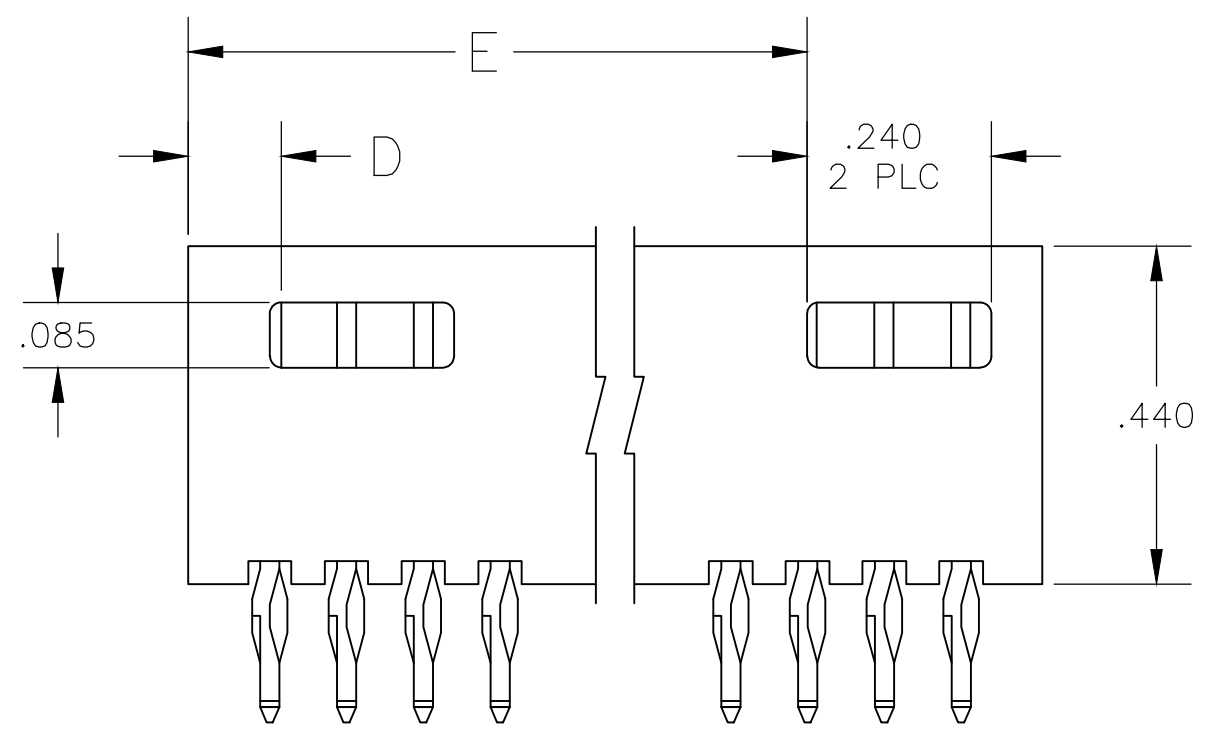


REVISIONS					
P	LTR	DESCRIPTION	DATE	DWN	APVD
C1		PART STATUS UPATED IN PART LIST TABLE	16FEB2018	SD	PS

- 1 THE NOTED DIMENSIONS APPLY AT THE INTERSECTION OF THE POST AND HOUSING.
- 2 POINT OF MEASUREMENT FOR PLATING THICKNESS.
- 3 FINISH: POSTS: 0.000030 GOLD ON CONTACT AREA, .000100 TO 0.000200 BRIGHT TIN LEAD ON SOLDER TAIL, ALL OVER .000050 NICKEL.
- 4 FINISH: POSTS: 0.000030 GOLD ON CONTACT AREA, .000100 TO 0.000200 MATTE TIN ON SOLDER TAIL, ALL OVER .000050 NICKEL.
- 5 OBSOLETE



SECTION X-X



RECOMMENDED HOLE LAYOUT

PLATING	ROW M	ROW N	E	D	C	B	A	NO OF POSN.	ASSEMBLY PART NUMBER
4	NONE	2	-	.106	.432	.300	3	8	5-1571731-1
3	NONE	2	-	.106	.432	.300	3	8	1571731-1

THIS DRAWING IS A CONTROLLED DOCUMENT.		DWN R BROWN 100CT03		
DIMENSIONS: INCHES		CHK J GESFORD 100CT03		
TOLERANCES UNLESS OTHERWISE SPECIFIED:		APVD J GESFORD 100CT03	NAME HDR ASSY, MOD II, COMPLIANT PIN, DR, .100 X .100 CL 4 SIDED SHROUD, SELECT LOAD	
0 PLC ± -		PRODUCT SPEC	SIZE A2	
1 PLC ± -		APPLICATION SPEC	CAGE CODE 00779	
2 PLC ± -		WEIGHT	DRAWING NO C=1571731	
3 PLC ± .005		FINISH SEE TABLE	RESTRICTED TO	
4 PLC ± -		MATERIAL HOUSING: FLAME RETARDANT THERMOPLASTIC COLOR-BLACK POST-Cu-Ni-Si.	SCALE 4:1	
ANGLES ± -		CUSTOMER DRAWING	SHEET 1 of 1	
FINISH		REV C1		