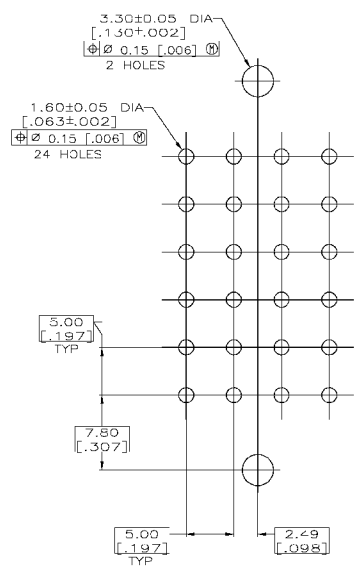
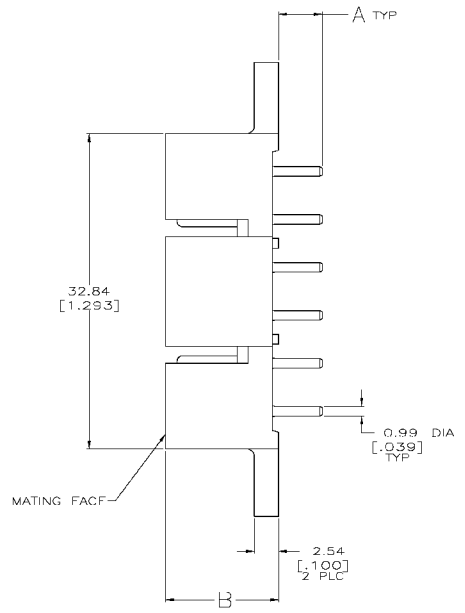
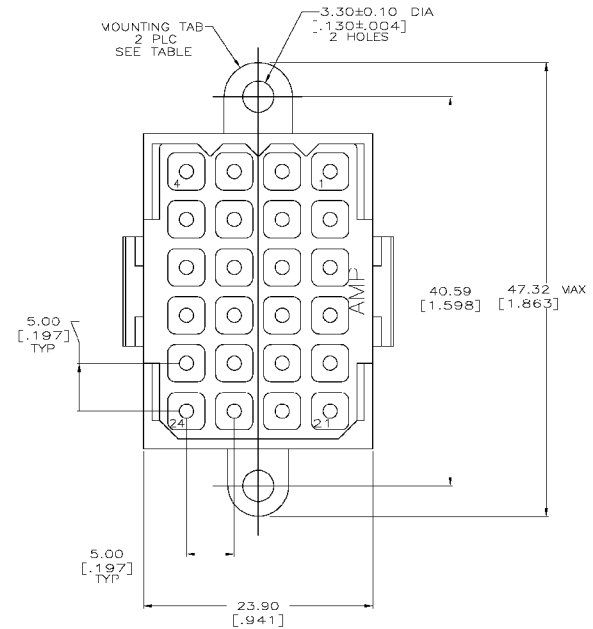
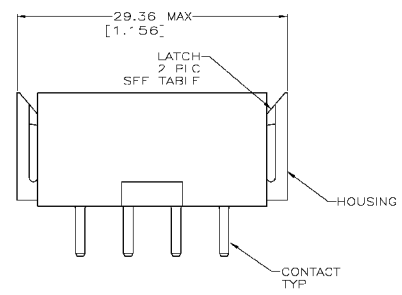


REV	DATE	DESCRIPTION	BY	CHK	APP
13					
W		CG3B-0356-03			



RECOMMENDED PC BOARD LAYOUT



- ▲ NYLON, UL 94V-0 RATED, RED.
- ▲ BRASS PER ASTM B36.
- ▲ 3.8 μm [.000150] MIN TIN OVER 2.54 μm [.000100] MIN COPPER.
- ▲ 0.76 μm [.000030] MIN GOLD FOR A LENGTH OF 5.08 [.200] FROM MATING END, 3.81 μm [.000150] MIN TIN FOR A LENGTH OF 4.83 [.190] MIN FROM OPPOSITE END, BOTH OVER 1.27 μm [.000050] MIN NICKEL.
- ▲ 0.38 μm [.000015] MIN GOLD FOR A LENGTH OF 5.08 [.200] FROM MATING END, 3.81 μm [.000150] MIN TIN FOR A LENGTH OF 4.83 [.190] MIN FROM OPPOSITE END, BOTH OVER 1.27 μm [.000050] MIN NICKEL.
- ▲ .000150 MIN TN OVER .000100 MIN COPPER OR .000050 MIN NICKEL.

	11.79 [.464]	4.60±0.64 [.181±.025]	YES	▲	NO	1-206763-2
	11.79 [.464]	4.60±0.64 [.181±.025]	YES	▲	YES	1-206763-1
OBSOLETE	11.79 [.464]	4.60±0.64 [.181±.025]	NO	▲	YES	206763-9
OBSOLETE	13.31 [.524]	3.05±0.38 [.120±.015]	YES	▲	NO	206763-8
	11.79 [.464]	4.60±0.64 [.181±.025]	YES	▲	NO	206763-4
	11.79 [.464]	4.60±0.64 [.181±.025]	YES	▲	YES	206763-3
	11.79 [.464]	4.60±0.64 [.181±.025]	YES	▲	NO	206763-2
	11.79 [.464]	4.60±0.64 [.181±.025]	YES	▲	YES	206763-1

THIS DRAWING IS A CONTROLLED DOCUMENT. DATE: 03/17/92. BY: TSP. TITLE: P/N Header Assembly, 24 Position, Metricmate.

DIVISION:	DESIGNER:	DATE:	SCALE:
INCHES:	BY:	3-17-92	4:1
0 PLC = -	108-10033		
2 PLC = -			
3 PLC = 0.12 [006]			
4 PLC = -			
5 HOLES = -			

MATERIAL: HOUSING: 1. FINISH: CONTACT: SEE TABLE. MECH: A1. 00779. CUSTOMER DRAWING. SCALE: 4:1. SHEET: 1 OF 1. REV: W.