

About Amphenol Commercial Products

Amphenol's commercial connector products are used in a variety of end user applications including networking, telecom, server & computer, storage & HDD, consumer electronics and entertainment, professional audio & Industrial & Military/Aerospace.

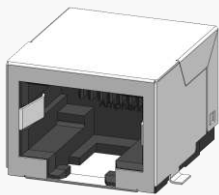
Related Products

FRJAE SERIES

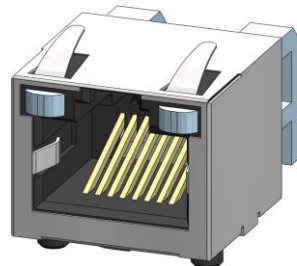


P/N FRJAE-418 SHOWN SINGLE PORT, 8P8C, WITH FERRITE FILTER AND SHIELD (FRONT TABS)

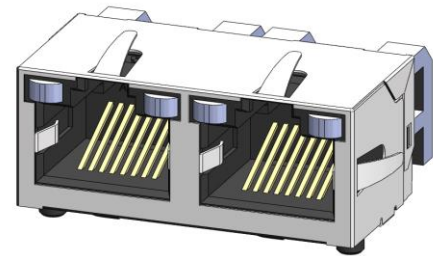
RJLSE SERIES



P/N RJLSE-41181-01 SHOWN SINGLE PORT, 8P8C, STANDARD SHIELD



P/N RJSSE-5381 SHOWN SINGLE PORT, 8P8C, WITH SHIELD AND LIGHT PIPE



P/N RJSSE-5381-02 SHOWN DOUBLE PORT, 8P8C, WITH SHIELD AND LIGHT PIPE

OVERVIEW

This product specification defines the general use and performance parameters for Amphenol's RJSSE Surface Mount series of inverted modular jacks.

Instead of LEDs this series utilizes light pipes to provide signal connectivity and visual feedback.

Availability: Single and multiport connectors, shielded and unshielded versions available with or without light pipe option. Light pipe available to purchase on their own; part number RJSSE-2485-01.

USAGE

The RJSSE Surface Mount modular jacks supports Ethernet Protocols. Shielding available for increased EMI performance and Light Pipes for Link Activity and Network Speed verification.

APPLICATIONS

Intended for use in applications such as:

Data

- Storage
- Servers
- Routers
- Switches
- Hubs

Consumer Goods

- Security Systems
- Set Top Boxes
- Video Game Systems
- PCs, Laptops
- Copiers, Printers

Industrial and Instrumentation

- Uninterruptible Power Supply (UPS)
- ATMs
- Vending Machines
- POS Terminals
- Industrial IoT Platforms

Networking & Telecom

- 5G Wireless
- Telephones
- Modems
- Fax Machines

Medical

- Analysis Equipment
- Mass Spectrometers

About Amphenol Commercial Products

Amphenol's commercial connector products are used in a variety of end user applications including networking, telecom, server & computer, storage & HDD, consumer electronics and entertainment, professional audio & Industrial & Military/Aerospace.

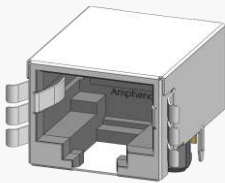
ELECTRICAL CHARACTERISTICS

| | | |
|--|---|-------------------------|
| Contact Resistance | 20 mΩ maximum | |
| Insulation Resistance | 500 MΩ minimum at 500V DC for 2 minutes maximum | |
| Current Rating | 1.5 Amps per contact | |
| Voltage Rating | 125 Volts AC | |
| DWV (Dielectric Withstanding Voltage) | Contact to Contact: | 1,000 VAC, 60 Hz, 1 min |
| | Contact to Shield: | 1,500 VAC, 60 Hz, 1 min |

Supports PoE Type1, Type2, Type 3, and Type 4 per IEEE PoE standards
 IP20 rated per IEC 60529
 TIA 1096 Compliant

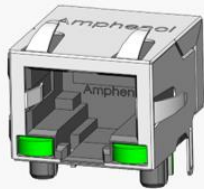
Related Products

RJULE SERIES



P/N RJULE-4X182-01 SHOWN
 SINGLE PORT, 8P8C, SHIELD
 WITH
 REAR PANEL MOUNT TABS

RJSBR SERIES



P/N RJSBR-5385-510-LT
 SHOWN
 THR, SINGLE PORT, 8P8C,
 WITH SHIELD AND GREEN
 LEDES

MECHANICAL CHARACTERISTICS

| | |
|--|---|
| Mating Connector Insertion Force | 5.0 lbs maximum |
| Mating Connector Pull Retention Force | 20.0 lbs minimum |
| Durability | 750 mating and unmating cycles for 50μ" gold plating |
| Recommended Soldering Temperature | Lead free reflow soldering up to 260°C for 10 seconds (refer to reflow profile below, maximum of 3 reflow passes permitted) |
| Operating Temperature | -55°C to +85°C |

UL File #: E135615

MATERIAL REQUIREMENTS

RJSSE connectors are RoHS compliant.
 Unless otherwise specified, the materials for each component shall be:

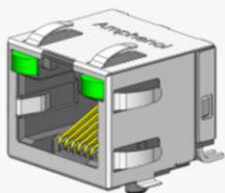
| | |
|-----------------------------------|--|
| Insulator | High temperature thermoplastic, flammability rating UL 94V-0 |
| Contacts | -Phosphor Bronze hard temper with gold thickness options (6μ", 15μ", 30μ", 50μ") over 50μ" minimum Nickel on contact mating area -100μ" minimum matte Tin over Nickel on soldering tail |
| Shield | Copper alloy, Nickel or matte Tin plating |
| Light Pipe | Optical grade polycarbonate, UL 94V-0 |
| Moisture Sensitivity Level | MSL-1 |

About Amphenol Commercial Products

Amphenol's commercial connector products are used in a variety of end user applications including networking, telecom, server & computer, storage & HDD, consumer electronics and entertainment, professional audio & Industrial & Military/Aerospace.

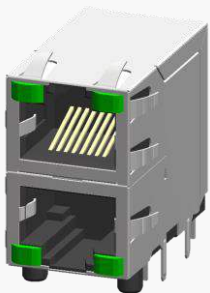
Related Products

RJCSE SERIES



P/N RJCSE-5381-01 SHOWN SINGLE PORT, 8P8C, WITH SHIELD AND GREEN LEDs

RJSAR SERIES



P/N RJSAR-5385-02 SHOWN THR, STACKED 2X1, 8P8C, WITH SHIELD AND GREEN LEDs

AVAILABLE DOCUMENTS

Below is a list of the most popular standard sales drawings:

Contact our website, sales, or an authorized Amphenol representation for additional drawings.

| | |
|-----------------------|--|
| RJSSE-24485-01 | Light Pipe |
| RJSSE-7060 | Single port, 6P6C, without shield, without light pipes |
| RJSSE-7061 | Single port, 6P6C, without shield, with light pipes |
| RJSSE-7061-01T | Single port, 6P6C, without shield, with light pipes, tape & reel package |
| RJSSE-7360 | Single port, 6P6C, shielded with top & bottom EMI tabs, without light pipes |
| RJSSE-7060-02 | Two port, 6P6C, without shield, without light pipes |
| RJSSE-7060-02T | Two port, 6P6C, without shield, without light pipes, tape & reel package |
| RJSSE-5080 | Single port, 8P8C, without shield, without light pipes |
| RJSSE-5080-01T | Single port, 8P8C, without shield, without light pipes, tape & reel package |
| RJSSE-5081 | Single port, 8P8C, without shield, with light pipes |
| RJSSE-5081-01T | Single port, 8P8C, without shield, with light pipes, tape & reel package |
| RJSSE-5380 | Single port, 8P8C, shielded with top and bottom EMI tabs, without light pipes |
| RJSSE-5380-01T | Single port, 8P8C, shielded with top & bottom EMI tabs, without light pipes, tape & reel package |
| RJSSE-5381 | Single port, 8P8C, shielded with top and bottom EMI tabs, with light pipes |
| RJSSE-5381-01T | Single port, 8P8C, shielded with top and bottom EMI tabs, with light pipes, tape & reel package |
| RJSSE-5580 | Single port, 8P8C, shielded with top EMI tabs, without light pipes |
| RJSSE-5580-01T | Single port, 8P8C, shielded with top EMI tabs, without light pipes, tape & reel package |
| RJSSE-5581 | Single port, 8P8C, shielded with top EMI tabs, with light pipes |
| RJSSE-5581-01T | Single port, 8P8C, shielded with top EMI tabs, with light pipes, tape & reel package |
| RJSSE-5F80 | Single port, 8P8C, shielded with no EMI tabs, with light pipes |
| RJSSE-5F80-01T | Single port, 8P8C, shielded with no EMI tabs, with light pipes, tape & reel package |
| RJSSE-5S80 | Single port, 8P8C, shielded with top and bottom EMI tabs, without light pipes |
| RJSSE-5S80-01T | Single port, 8P8C, shielded with top & bottom EMI tabs, without light pipes, tape & reel package |
| RJSSE-5S81 | Single port, 8P8C, shielded with top and bottom EMI tabs, with light pipes |
| RJSSE-5S81-01T | Single port, 8P8C, shielded with top and bottom EMI tabs, with light pipes, tape & reel package |
| RJSSE-5080-02 | Two port, 8P8C, without shield, without light pipes |
| RJSSE-5080-02T | Two port, 8P8C, without shield, without light pipes, tape & reel package |
| RJSSE-5380-02T | Two port, 8P8C, shielded with top & bottom EMI tabs, without light pipes, tape & reel package |
| RJSSE-5381-02 | Two port, 8P8C, shielded with top and bottom EMI tabs, with light pipes |
| RJSSE-5381-02T | Two port, 8P8C, shielded with top and bottom EMI tabs, with light pipes, tape & reel package |
| RJSSE-5580-02 | Two port, 8P8C, shielded with top EMI tabs, without light pipes |
| RJSSE-5580-02T | Two port, 8P8C, shielded with top EMI tabs, without light pipes, tape & reel package |
| RJSSE-5581-02 | Two port, 8P8C, shielded with top EMI tabs, with light pipes |

Amphenol Canada Corp.
605 Milner Avenue
Toronto, Ontario, Canada M1B 5X6

www.amphenol-icc.com
(416) 291-4401
sales@amphenolcanada.com

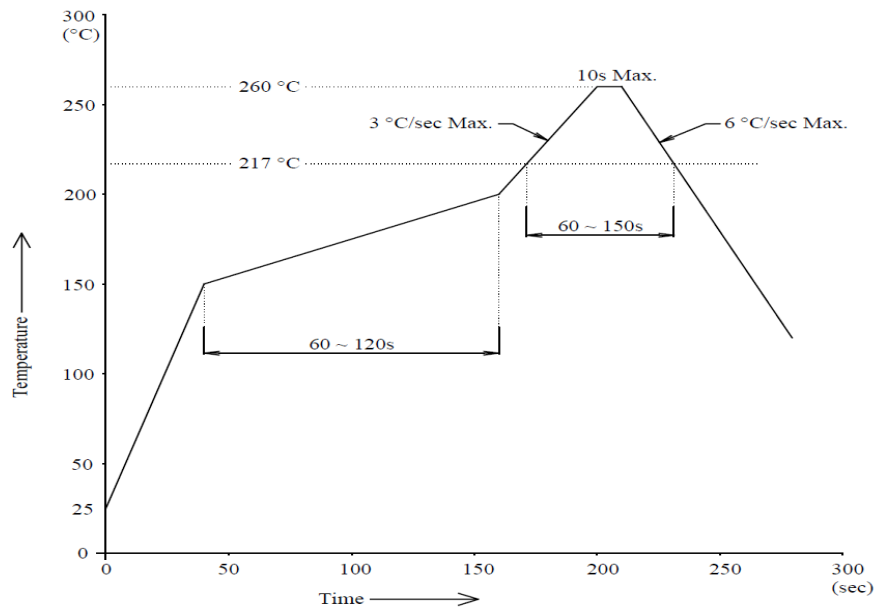
Copyright © Amphenol Corporation 2021 · All rights reserved

Page 3 of 4
Amphenol

About Amphenol Commercial Products

Amphenol's commercial connector products are used in a variety of end user applications including networking, telecom, server & computer, storage & HDD, consumer electronics and entertainment, professional audio & Industrial & Military/Aerospace.

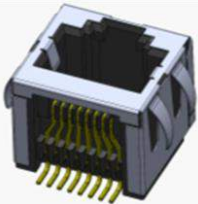
RECOMMENDED LEAD FREE REFLOW SOLDER PROFILE



Above solder profile only for reference, for more information, please refer to standard J-STD-020E

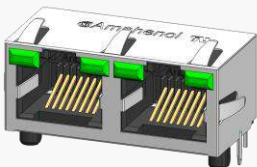
Related Products

RJE23 SERIES



P/N RJE23-188-3X10 SHOWN
SMT SINGLE PORT, 8P8C,
TOP ENTRY, WITH SHIELD

RJHSR SERIES



P/N RJHSR-5385-520-T SHOWN
THR, 8P8C, TWO PORT, WITH
STRAIGHT PEGS, WITH
SHIELD, AND GREEN LEDs

Amphenol Canada Corp.
605 Milner Avenue
Toronto, Ontario, Canada M1B 5X6

www.amphenol-icc.com
(416) 291-4401
sales@amphenolcanada.com

Copyright © Amphenol Corporation 2021 · All rights reserved

Page 4 of 4
Amphenol