

LTC7891 High Frequency Step-Down Supply with GaN FETs

DESCRIPTION

Demonstration circuit 2995A is a buck regulator featuring the [LTC®7891](#). The DC2995A operates from a 36V to 72V input voltage range and generates a 12V, 20A output. The LTC7891 has a precision voltage reference which can generate an output voltage with 2% tolerance over the full operating conditions. The 500kHz switching frequency operation results in a small and efficient circuit. The converter achieves over 96% efficiency with 20A load.

The demonstration circuit can be easily modified to regulate output voltages from 0.8V to 60V.

The DC2995A provides a high performance cost-effective solution for generating a 12V output. The LTC7891 data sheet gives a complete description of this part, its operation and application information and must be read in conjunction with this demo manual.

[Design files for this circuit board are available.](#)

All registered trademarks and trademarks are the property of their respective owners.

PERFORMANCE SUMMARY Specifications are at T_A = 25°C

PARAMETER	CONDITIONS	MIN	TYP	MAX	UNITS
Minimum Input Voltage	I _{OUT} = 0A to 20A		36		V
Maximum Input Voltage	I _{OUT} = 0A to 20A		72		V
Output Voltage	V _{IN} = 36V to 72V		12 ±2%		V
Output Voltage Ripple	V _{IN} = 48V, I _{OUT} = 20A		300		mV _{p-p}
Nominal Switching Frequency			500		kHz

DEMO MANUAL DC2995A

QUICK START PROCEDURE

Demonstration circuit 2995A is easy to set up to evaluate the performance of the LTC7891. For proper measurement equipment setup refer to Figure 1 and follow the procedure below.

NOTE: When measuring the input or output voltage ripple, care must be taken to minimize the length of oscilloscope probe ground lead. Measure the input or output voltage ripple by connecting the probe tip directly across the VIN or VOUT and GND terminals as shown in Figure 2.

1. With power off, connect the input power supply to VIN and GND.
2. Keep the load set to 0A or disconnected.

3. Turn the input power source on and slowly increase the input voltage.

NOTE: Make sure that the input voltage V_{IN} does not exceed 72V.

4. Set the input voltage to 48V and check for the proper output voltage of 12V. If there is no output, temporarily disconnect the load to make sure that the load is not set too high.
5. Once the proper output voltage is established, adjust the load, and observe the output voltage regulation, ripple voltage, efficiency, and other parameters.

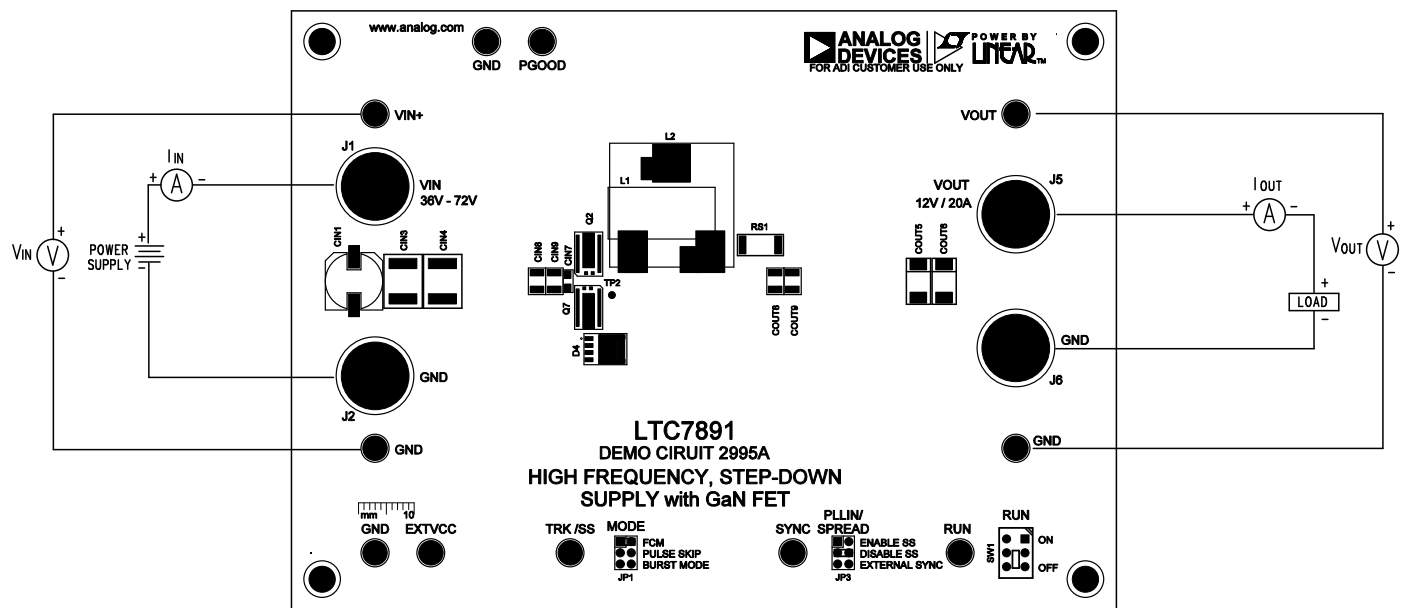


Figure 1. Proper Measurement Equipment Setup

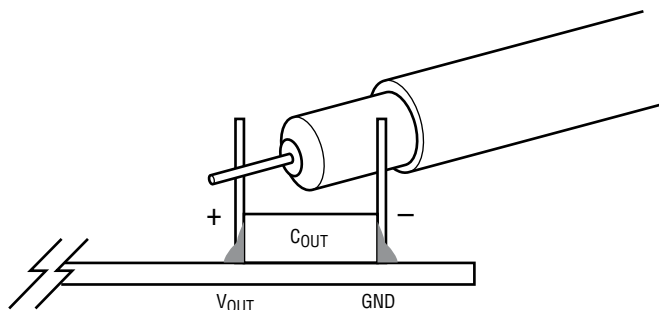


Figure 2. Measuring Input or Output Ripple

QUICK START PROCEDURE

Changing the Output Voltage

To change the output voltage from the programmed 12V, change the voltage setting resistors connected to LTC7891 FB pin (see Schematic Diagram section). Also, change all the power components required to meet the desired output voltage.

Converter Efficiency and Output Current

Typical performance of DC2995A is shown in Figure 3. The efficiency is high even at light loads thanks to Burst Mode® operation.

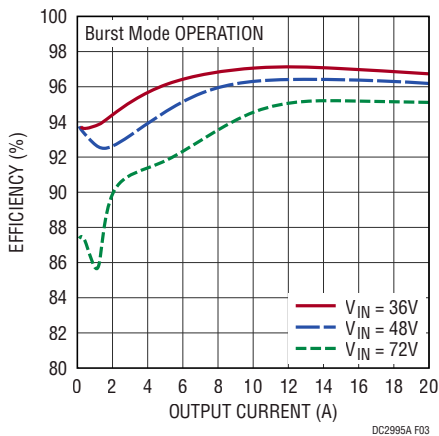


Figure 3. The 12V Output Efficiency is 96.1% with 20A Load

Output Load Step Response

The load step response of DC2995A is dependent on the amount and type of output caps used. For higher load steps more output capacitance can be added to keep the voltage transients at the desired level. The 10A load step transients with 48V input are shown in Figure 4. Other types of low ESR and high value capacitors can be used if space is available to reduce load transients to desired level.

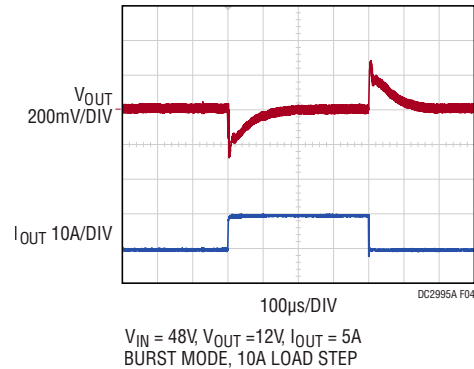


Figure 4. The LTC7891 Has Good Load Step Response with Small Output Capacitors

Start-Up and Soft-Start Function

The DC2995A features a soft-start circuit that ramps the output voltage up in monotonic fashion as shown in Figure 5. The soft-start circuit also prevents output voltage overshoot when output voltage ramp reaches regulation.

When RUN pin is enabled, the output voltage will start ramping up after 1ms delay that is required for INTV_{CC} pin to reach the internal UVLO level.

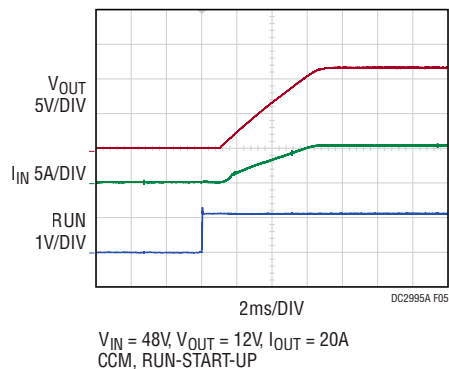


Figure 5. The DC2995A Ramps the Output Slowly at Start-Up without Output Voltage Overshoot

QUICK START PROCEDURE

Thermal Performance

The LTC7891 features excellent thermal performance due to high efficiency of synchronous buck circuit. The temperature rises of LTC7891 with 48V input and 20A load is shown in Figure 6.

The six-layer PCB layout features solid copper planes that provide heat spreading across the whole board.

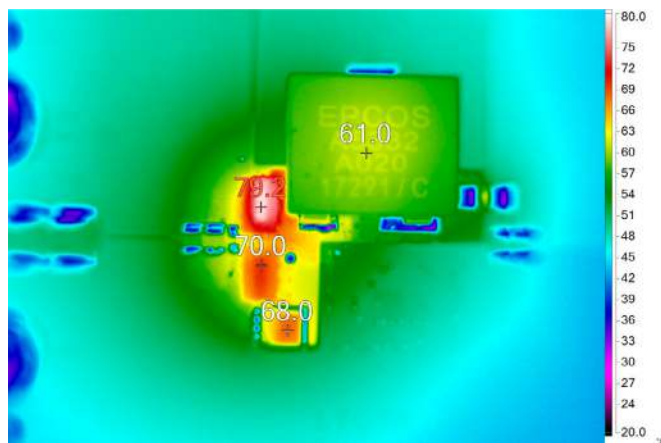


Figure 6. The LTC7891 Has Only 54.2°C Temperature Rise with 48V Input, 12V Output and 20A Load. ($T_A = 25^\circ\text{C}$, No Cooling Fan)

PARTS LIST

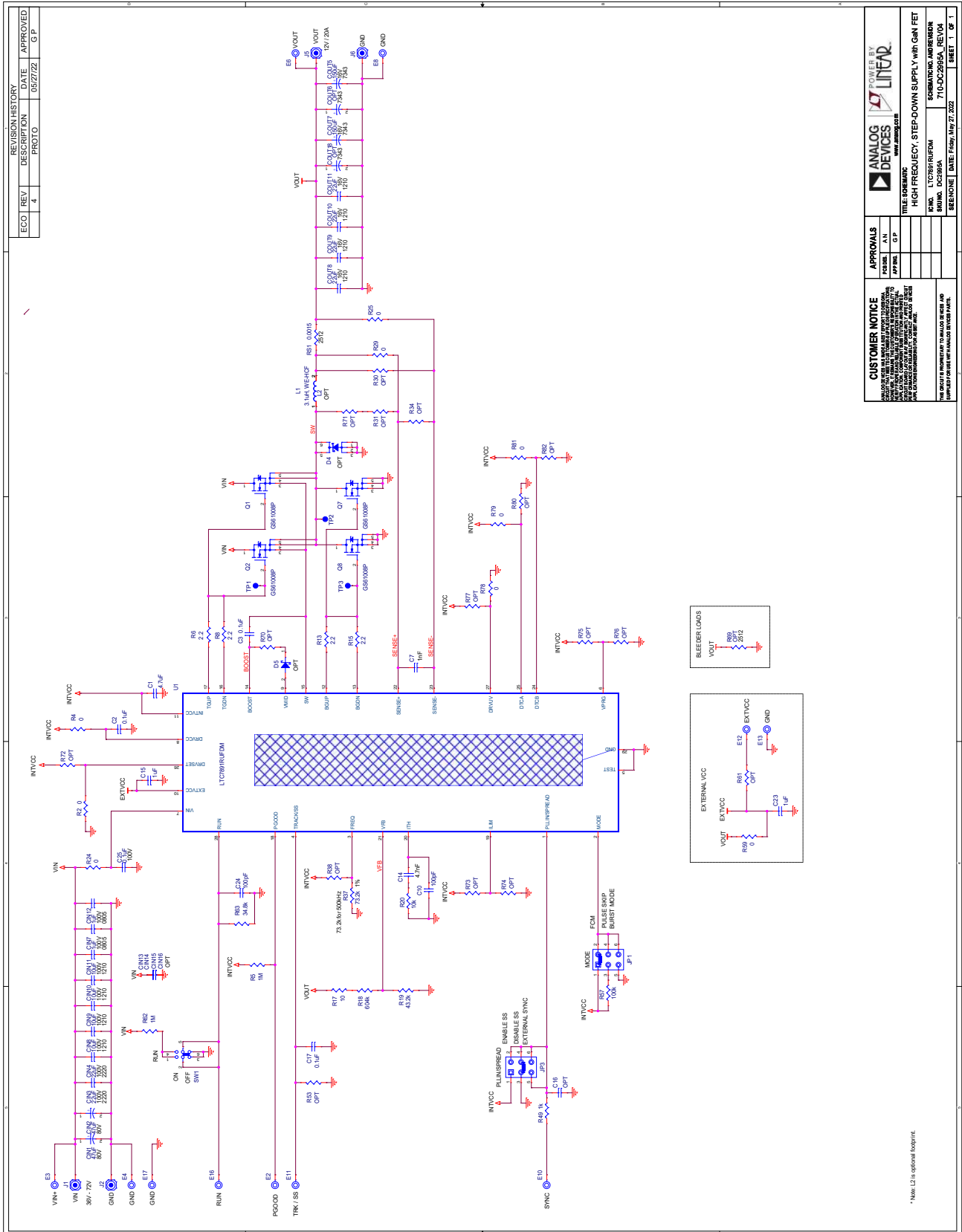
ITEM	QTY	REFERENCE	PART DESCRIPTION	MANUFACTURER/PART NUMBER
Required Circuit Components				
1	1	C1	CAP., 4.7 μ F, X5R, 25V, 10%, 0603	MURATA, GRM188R61E475KE11D
2	3	C2, C3, C17	CAP., 0.1 μ F, X7R, 25V, 10%, 0603	AVX, 06033C104KAT2A
3	1	C7	CAP., 1000pF, X7R, 25V, 10%, 0603	AVX, 06033C102KAT2A
4	2	C10, C24	CAP., 100pF, COG, 25V, 10%, 0603	AVX, 06033A101KAT2A
5	1	C14	CAP., 4700pF, COG/NPO, 50V, 5%, 0603	AVX, 06035A472JAT2A
6	1	C15	CAP., 1 μ F, X5R, 50V, 10%, 0603, AEC-Q200	MURATA, GRT188R61H105KE13D
7	1	C23	CAP., 1 μ F, X7R, 25V, 10%, 0603, AEC-Q200	MURATA, GCM188R71E105KA64D
8	1	C25	CAP., 0.1 μ F, X7R, 100V, 10%, 0603	AVX, 06031C104KAT2A
9	2	CIN1, CIN2	CAP., 47 μ F, ALUM. POLY. HYB., 80V, 20%, 10mm x 10.2mm SMD, RADIAL, AEC-Q200	PANASONIC, EEHZC1K470P
10	2	CIN3, CIN4	CAP., 22 μ F, X7S, 100V, 20%, 2220, STACKED	TDK, CKG57NX7S2A226M500JH
11	2	CIN7, CIN12	CAP., 1 μ F, X7S, 100V, 10%, 0805, SOFT TERM.	MURATA, GRJ21BC72A105KE11L
12	4	CIN8-CIN11	CAP., 10 μ F, X7S, 100V, 10%, 1210	MURATA, GRM32EC72A106KE05L
13	2	COU5, COU7	CAP., 150 μ F, TANT., 16V, 20%, 7343	PANASONIC, 16TQC150MYF
14	4	COU8-COU11	CAP., 22 μ F, X7R, 16V, 10%, 1210	MURATA, GRM32ER71C226KEA8L
15	1	L1	IND., 3.1 μ H, WE-HCF, PWR, 15%, 16A, 2.09m Ω , 2013	WURTH ELEKTRONIK, 7443630310
16	4	Q1, Q2, Q7, Q8	XSTR., MOSFET, N-CH, E-Mode, 100V, 90A, GaNPX-4, BOTTOM-SIDE COOLED	GAN SYSTEMS INC., GS61008P-MR
17	9	R2, R4, R24, R25, R29, R59, R78, R79, R81	RES., 0 Ω , 1/10W, 0603, AEC-Q200	VISHAY, CRCW06030000Z0EA
18	2	R5, R62	RES., 1M, 1%, 1/10W, 0603, AEC-Q200	VISHAY, CRCW06031M00FKEA
19	4	R6, R8, R13, R15	RES., 2.2 Ω , 5%, 1/10W, 0603, AEC-Q200	PANASONIC, ERJ3GEYJ2R2V
20	1	R17	RES., 10 Ω , 1%, 1/10W, 0603	VISHAY, CRCW060310R0FKEA
21	1	R18	RES., 604k, 1%, 1/10W, 0603, AEC-Q200	VISHAY, CRCW0603604KFKEA
22	1	R19	RES., 43.2k, 1%, 1/10W, 0603, AEC-Q200	PANASONIC, ERJ3EKF4322V
23	1	R20	RES., 10k, 1%, 1/10W, 0603, AEC-Q200	VISHAY, CRCW060310K0FKEA
24	1	R37	RES., 73.2k, 1%, 1/10W, 0603	NIC, NRC06F7322TRF
25	1	R49	RES., 1k, 1%, 1/10W, 0603	VISHAY, CRCW06031K00FKEA
26	1	R57	RES., 100k, 1%, 1/10W, 0603, AEC-Q200	VISHAY, CRCW0603100KFKEA
27	1	R63	RES., 34.8k, 1%, 1/10W, 0603	VISHAY, CRCW060334K8FKEA
28	1	RS1	RES., 0.0015 Ω , 1%, 3W, 2512, METAL, SENSE, AEC-Q200	VISHAY, WSLP25121L500FEA
29	1	U1	IC, STEP-DOWN CONTROLLER FOR GaN FETs, QFN-28	ANALOG DEVICES, LTC7891RUFDM#PBF

DEMO MANUAL DC2995A

PARTS LIST

ITEM	QTY	REFERENCE	PART DESCRIPTION	MANUFACTURER/PART NUMBER
Additional Demo Board Circuit Components				
1	0	C16	CAP. OPTION, 0603	
2	0	CIN13-CIN16	CAP., 10 μ F, X7S, 100V, 10%, 1210	MURATA, GRM32EC72A106KE05L
3	0	COU16, COU18	CAP. OPTION, 7343	
4	0	D4	DIODE, SCHOTTKY, 100V, 12A, SO-8FL, AEC-101	ON SEMICONDUCTOR, NTS12100EMFST1G
5	0	D5	DIODE, SCHOTTKY BARRIER 100V 200mA SOD-323	ON SEMICONDUCTOR, NSR02100HT1G
6	0	R30, R31, R34, R38, R53, R61, R70-R77, R80, R82	RES., OPTION, 0603	
7	0	R69	RES., OPTION, 2512	
8	1	SW1	SWITCH SLIDE DPDT 300MA 6V THROUGH HOLE	C&K, JS202011CQN
9	4	J1, J2, J5, J6	EVAL BOARD STUD HARDWARE SET, #10-32	ANALOG DEVICES, 720-0010
10	0	L1	IND., OPTION, 3.6 μ H, PWR, SHIELDED, 20%, 30A, 1.82m Ω , 19.69mm \times 19.56mm \times 12.95mm, SER2013, AEC-Q200	COILCRAFT, SER2013-362MLB

SCHEMATIC DIAGRAM

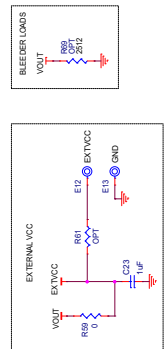


REVISION HISTORY			
ECO	REV	DESCRIPTION	DATE APPROVED
	4		05/27/22
		PROTO	G.P.

APPROVALS		POWER BY	
DESIGN	A.N.	ANALOG DEVICES	LINEAR
APP'N	G.P.	WWW.ANALOG.COM	WWW.LINEAR.COM
TITLE SHEET			
HIGH FREQUENCY STEP-DOWN SUPPLY WITH GEN FET			
PART NO. LTC3891F05M			
SCHEMATIC AND REVISION			
DRAWN: DC2995A			
DATE: Friday, May 27, 2022			
SHEET 1 OF 1			

CUSTOMER NOTICE
 ANALOG DEVICES AND LINEAR TECHNOLOGY CORP. (LINEAR) ARE PROVIDING THIS SCHEMATIC AS A SERVICE TO OUR CUSTOMERS. THIS SCHEMATIC IS NOT A CONTRACT. ANALOG DEVICES AND LINEAR TECHNOLOGY CORP. (LINEAR) SHALL NOT BE RESPONSIBLE FOR ANY DAMAGES, INCLUDING CONSEQUENTIAL DAMAGES, ARISING FROM THE USE OF THIS SCHEMATIC. THE SCHEMATIC IS PROVIDED AS IS, WITHOUT WARRANTY OF ANY KIND, EXPRESS OR IMPLIED, INCLUDING BUT NOT LIMITED TO THE WARRANTIES OF MERCHANTABILITY, FITNESS FOR A PARTICULAR PURPOSE AND NONINFRINGEMENT. ANALOG DEVICES AND LINEAR TECHNOLOGY CORP. (LINEAR) SHALL NOT BE RESPONSIBLE FOR ANY DAMAGES, INCLUDING CONSEQUENTIAL DAMAGES, ARISING FROM THE USE OF THIS SCHEMATIC.

CUSTOMER NOTICE
 THIS CIRCUIT IS PROPRIETARY TO ANALOG DEVICES AND LINEAR TECHNOLOGY CORP. (LINEAR). IT IS NOT TO BE REPRODUCED OR TRANSMITTED IN ANY FORM OR BY ANY MEANS, ELECTRONIC OR MECHANICAL, INCLUDING PHOTOCOPYING, RECORDING, OR BY ANY INFORMATION STORAGE AND RETRIEVAL SYSTEM, WITHOUT THE EXPRESS WRITTEN PERMISSION OF ANALOG DEVICES AND LINEAR TECHNOLOGY CORP. (LINEAR).



* Note: L2 is optional component.



ESD Caution

ESD (electrostatic discharge) sensitive device. Charged devices and circuit boards can discharge without detection. Although this product features patented or proprietary protection circuitry, damage may occur on devices subjected to high energy ESD. Therefore, proper ESD precautions should be taken to avoid performance degradation or loss of functionality.

Legal Terms and Conditions

By using the evaluation board discussed herein (together with any tools, components documentation or support materials, the "Evaluation Board"), you are agreeing to be bound by the terms and conditions set forth below ("Agreement") unless you have purchased the Evaluation Board, in which case the Analog Devices Standard Terms and Conditions of Sale shall govern. Do not use the Evaluation Board until you have read and agreed to the Agreement. Your use of the Evaluation Board shall signify your acceptance of the Agreement. This Agreement is made by and between you ("Customer") and Analog Devices, Inc. ("ADI"), with its principal place of business at One Technology Way, Norwood, MA 02062, USA. Subject to the terms and conditions of the Agreement, ADI hereby grants to Customer a free, limited, personal, temporary, non-exclusive, non-sublicensable, non-transferable license to use the Evaluation Board FOR EVALUATION PURPOSES ONLY. Customer understands and agrees that the Evaluation Board is provided for the sole and exclusive purpose referenced above, and agrees not to use the Evaluation Board for any other purpose. Furthermore, the license granted is expressly made subject to the following additional limitations: Customer shall not (i) rent, lease, display, sell, transfer, assign, sublicense, or distribute the Evaluation Board; and (ii) permit any Third Party to access the Evaluation Board. As used herein, the term "Third Party" includes any entity other than ADI, Customer, their employees, affiliates and in-house consultants. The Evaluation Board is NOT sold to Customer; all rights not expressly granted herein, including ownership of the Evaluation Board, are reserved by ADI. CONFIDENTIALITY. This Agreement and the Evaluation Board shall all be considered the confidential and proprietary information of ADI. Customer may not disclose or transfer any portion of the Evaluation Board to any other party for any reason. Upon discontinuation of use of the Evaluation Board or termination of this Agreement, Customer agrees to promptly return the Evaluation Board to ADI. ADDITIONAL RESTRICTIONS. Customer may not disassemble, decompile or reverse engineer chips on the Evaluation Board. Customer shall inform ADI of any occurred damages or any modifications or alterations it makes to the Evaluation Board, including but not limited to soldering or any other activity that affects the material content of the Evaluation Board. Modifications to the Evaluation Board must comply with applicable law, including but not limited to the RoHS Directive. TERMINATION. ADI may terminate this Agreement at any time upon giving written notice to Customer. Customer agrees to return to ADI the Evaluation Board at that time. LIMITATION OF LIABILITY. THE EVALUATION BOARD PROVIDED HEREUNDER IS PROVIDED "AS IS" AND ADI MAKES NO WARRANTIES OR REPRESENTATIONS OF ANY KIND WITH RESPECT TO IT. ADI SPECIFICALLY DISCLAIMS ANY REPRESENTATIONS, ENDORSEMENTS, GUARANTEES, OR WARRANTIES, EXPRESS OR IMPLIED, RELATED TO THE EVALUATION BOARD INCLUDING, BUT NOT LIMITED TO, THE IMPLIED WARRANTY OF MERCHANTABILITY, TITLE, FITNESS FOR A PARTICULAR PURPOSE OR NON-INFRINGEMENT OF INTELLECTUAL PROPERTY RIGHTS. IN NO EVENT WILL ADI AND ITS LICENSORS BE LIABLE FOR ANY INCIDENTAL, SPECIAL, INDIRECT, OR CONSEQUENTIAL DAMAGES RESULTING FROM CUSTOMER'S POSSESSION OR USE OF THE EVALUATION BOARD, INCLUDING BUT NOT LIMITED TO LOST PROFITS, DELAY COSTS, LABOR COSTS OR LOSS OF GOODWILL. ADI'S TOTAL LIABILITY FROM ANY AND ALL CAUSES SHALL BE LIMITED TO THE AMOUNT OF ONE HUNDRED US DOLLARS (\$100.00). EXPORT. Customer agrees that it will not directly or indirectly export the Evaluation Board to another country, and that it will comply with all applicable United States federal laws and regulations relating to exports. GOVERNING LAW. This Agreement shall be governed by and construed in accordance with the substantive laws of the Commonwealth of Massachusetts (excluding conflict of law rules). Any legal action regarding this Agreement will be heard in the state or federal courts having jurisdiction in Suffolk County, Massachusetts, and Customer hereby submits to the personal jurisdiction and venue of such courts. The United Nations Convention on Contracts for the International Sale of Goods shall not apply to this Agreement and is expressly disclaimed.