

DWG. NO.
SD-51164-**-05

8

7

6

5

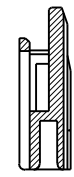
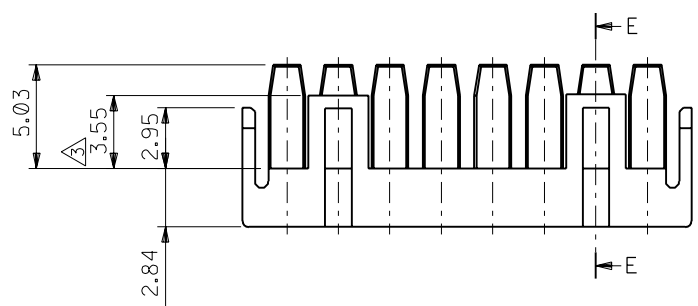
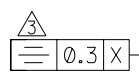
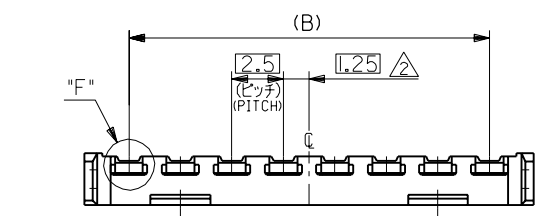
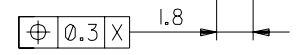
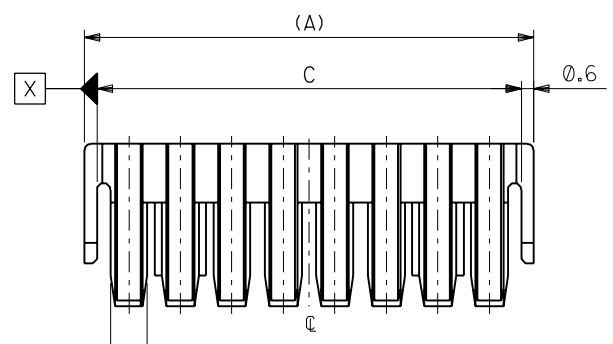
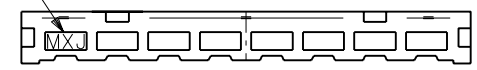
4

3

2

1

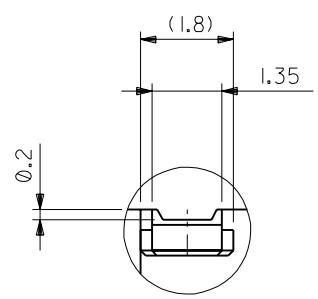
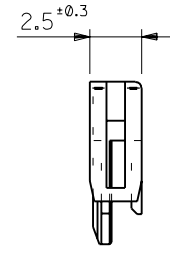
トレードマーク
TRADE MARK



断面 E-E
SECT.E-E
(8極以上)
(OVER 8CKT.)



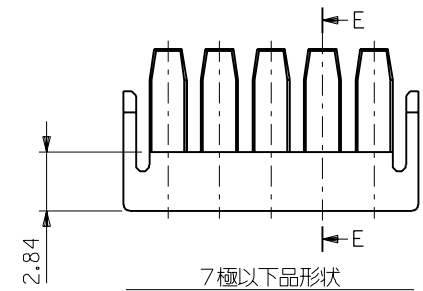
断面 E-E
SECT.E-E
(7極以下)
(UNDER 7CKT.)



拡大図 "F"
DETAIL F

注記 NOTES

1. 適合ターミナル : 50752-8*00
APPLICABLE TERMINAL : 50752-8*00
適合ハウジング : 51163-**-00
APPLICABLE HOUSING : 51163-**-00
2. 偶数極の製品に適用。
APPLY EVEN CIRCUIT PRODUCTS.
3. 8~15極品に適用。
APPLY 8~15 CKT PRODUCTS.



7極以下品形状
SHAPE OF UNDER 7CKT.

12.5	38.1	35	39.3	51164-1505	15
↑	35.6	32.5	36.8	↑	-1405
	33.1	30	34.3		-1305
	30.6	27.5	31.8		-1205
	28.1	25	29.3		-1105
	25.6	22.5	26.8		-1005
↓	23.1	20	24.3		-0905
12.5	20.6	17.5	21.8		-0805
X	18.1	15	19.3		-0705
	15.6	12.5	16.8		-0605
	13.1	10	14.3		-0505
	10.6	7.5	11.8		-0405
	8.1	5	9.3		-0305
	5.6	2.5	6.8	51164-0205	2
D	C	(B)	(A)	ENG. NO.	極数 NO. OF CKT.

:MM DIMENSIONS IN METRIC DO NOT SCALE DRAWING

角度 ANGLE	±3°				
30 以上 OVER	+0.3				
10 以上 OVER	+0.25				
30 未満 UNDER					
10 未満 UNDER	+0.2				
一般公差 GENERAL TOLERANCES	LTR	変更内容 REVISION RECORD	DR. CHK.	日付 DATE	
	0	新規作成 (JC80469)	S.A.T.	'97/11/27	

材料 MATERIAL	PBTP, UL94V-0 (灰色 GRAY)
仕上げ FINISH	—
適用電線範囲 WIRE RANGE	—
被覆外径 INS. RANGE	—
DRAWN BY '97/11/26	CHK'D BY '97/11/27
S.AIHARA	T.ITO
APP'D BY '97/11/27	尺度 SCALE 4 : 1
M.FUKUSHIMA	

MOLEX-JAPAN CO.,LTD. 日本モレックス株式会社	
REVISE ONLY ON CAD SYSTEM	
TITLE 名称 2.5 WIRE TO BOARD CONN. RETAINER	
DWG. NO.	REV
SD-51164-**-05	0

8

7

6

5

4

3

2

1

51164-05