

注記 NOTES

1. 使用材料 MATERIAL
- ハウジング : 液晶ポリマー (LCP)、ナチュラル(白色)、ガラス充填、UL94V-0  
 HOUSING LIQUID CRYSTAL POLYMER, NATURAL(WHITE), GLASS FILLED, UL-94V0
- アクチュエータ : ポリフェニレンサルファイド(PPS)、黒色ガラス充填、UL94V-0  
 ACTUATOR POLYPHENYLENE SULFIDE, BLACK, GLASS FILLED, UL-94V0
- ターミナル : リン青銅 (t=0.2)  
 TERMINAL PHOSPHOR BRONZE (t=0.2)
- 金具 : リン青銅 (t=0.2)、  
 FITTING NAIL PHOSPHOR BRONZE (t=0.2)
2. めっき仕様 PLATING
- ターミナル TERMINAL
- 錫銀ビスマスマッキ(1.0μm以上)  
 下地: ニッケルメッキ(1.0μm以上)  
 TIN SILVER BISMUTH PLATING (1.0 MICROMETER MINIMUM)  
 UNDER PLATE : NICKEL PLATING (1.0 MICROMETER MINIMUM)
- 金具 FITTING NAIL
- 錫メッキ(1.0μm以上)  
 下地: ニッケルメッキ(1.0μm以上)  
 TIN PLATING  
 TIN PLATING (1.0 MICROMETER MINIMUM)  
 UNDER PLATE : NICKEL PLATING (1.0 MICROMETER MINIMUM)
- △ R0.3はFPCの導体部にかからないこと  
 R0.3 MUST NOT BE OVERLAPED TO PATTERN OF FPC.
4. エンボステープ梱包時は、アクチュエータがロックした状態とする。  
 IN THE PACKAGE, ACTUATOR OF PART NO.54548-\*\*22 SHOULD BE LOCKED.

- △ ソルダータール半田付け面のズレ量、及び金具半田付け面のズレ量は、基準面 Z に対し上方向 0MAX.、下方向 0.15MAX.とし、相互のパラッキ量は0.1MAX.とする。  
 MISALIGNMENT OF SOLDER TAILS AND FITTING NAILS FROM UPPER DIRECTION: 0 MAX., LOWER DIRECTION: 0.15 MAX. OFFSET BETWEEN UPPER AND LOWER 0.1 MAX.
- △ 偶数極に適用。  
 APPLY FOR EVEN CIRCUIT.
- △ パターンはくり止め用金具  
 FITTING NAIL FOR PREVENTION OF PEELING OF P.C.B. PATTERN.
8. ELV及びRoHS適合品  
 ELV AND RoHS COMPLIANT

FPC/FFCについて ABOUT FPC/FFC

打ち抜き方向は導体側から補強板側を推奨します。  
 導体部については軟箔銅35μmまたは50μmを推奨します。  
 RECOMMENDED PUNCHING DIRECTION: FROM CONDUCTOR SIDE TO STIFFENER SIDE  
 RECOMMENDED CONDUCTOR SPEC: SOFT COPPER FOIL  
 RECOMMENDED CONDUCTOR THICKNESS: 35 MICROMETER OR 50 MICROMETER

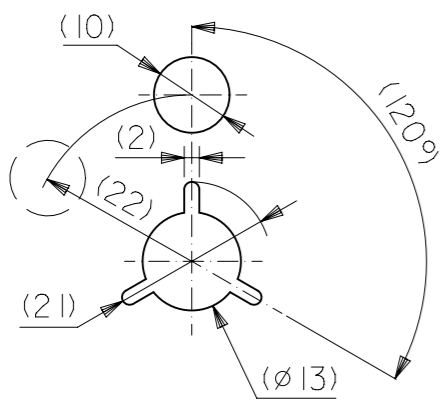
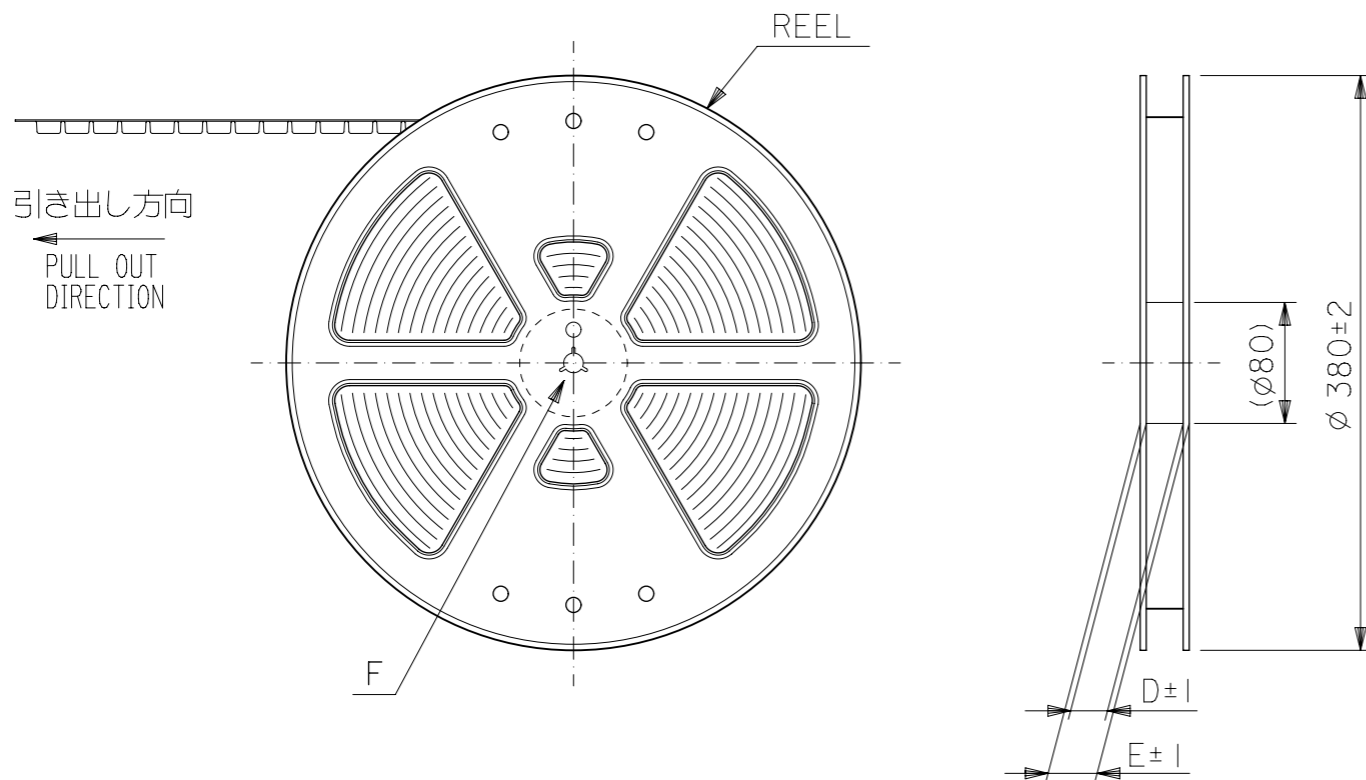
FPCについて ABOUT FPC

補強フィルム材質はポリイミドを推奨します。ベースフィルムは25μmを推奨します。  
 接着剤は熱硬化接着剤を推奨します。  
 尚、接着剤の接点部への付着は導通不良の原因になりますので、染み出しが無い様、お願い致します。  
 RECOMMENDED STIFFENER MATERIAL: POLYIMIDE  
 RECOMMENDED BASE FILM THICKNESS: 25 MICROMETER  
 RECOMMENDED ADHESIVE: THERMOSETTING ADHESIVE  
 NOTE: PLEASE PUT APPROPRIATE AMOUNT OF ADHESIVE ON ADHEREND BECAUSE THERE IS A POSSIBILITY THAT THE EXTRA ADHESIVE CAUSES THE DEFECT IN ELECTRICAL CONTINUITY.

54548-\*\*22 MODEL No.

THIS DRAWING CONTAINS INFORMATION THAT IS PROPRIETARY TO MOLEX ELECTRONIC TECHNOLOGIES, LLC AND SHOULD NOT BE USED WITHOUT WRITTEN PERMISSION		CURRENT REV DESC: OBSOLETE PART NUMBER	
DIMENSION UNITS	SCALE	EC NO: 636343	
mm	1:1	DRWN: AKUMAR19	2020/04/14
GENERAL TOLERANCES (UNLESS SPECIFIED)		CHK'D: GGA	2020/07/10
		APPR: GGA	2020/07/10
		INITIAL REVISION:	
		DRWN: JASANUMA	2013/12/04
		APPR: YNOGAWA	2014/01/10
		DRAWING	SERIES
		A3-SIZE	54548
		MATERIAL NUMBER	CUSTOMER
		SEE TABLE	GENERAL MARKET
		DOCUMENT NUMBER	DOC TYPE DOC PART REVISION
		SD-54548-043	PSD 001 A
		SHEET NUMBER	2 OF 2

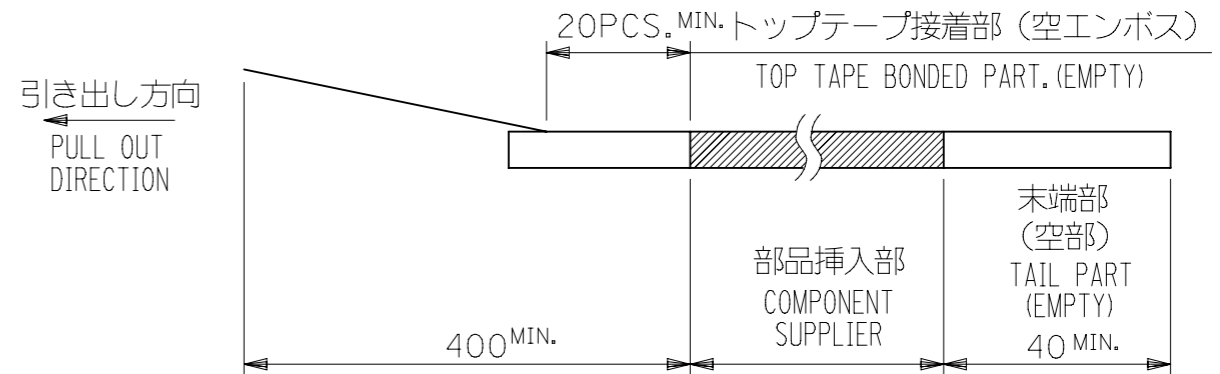
GENERAL TOLERANCES (UNLESS SPECIFIED)	
10 <sup>UNDER</sup>	±0.2
10 <sup>OVER</sup> 30 <sup>UNDER</sup>	±0.25
30 <sup>OVER</sup>	±0.3



DETAIL F

NOTES

- 製品詳細寸法については図面 SD-54548-043 を参照下さい。  
RE DETAILED DIMENSION, SEE SD-54548-043
- 梱包数量：3000個/リール  
NUMBER OF CONNECTORS : 3000PCS/REEL
- リードテープ長さ LEAD TAPE LENGTH



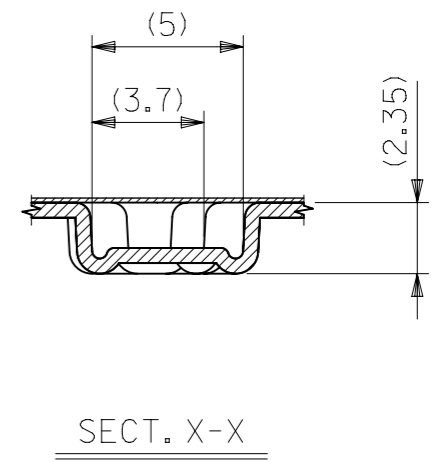
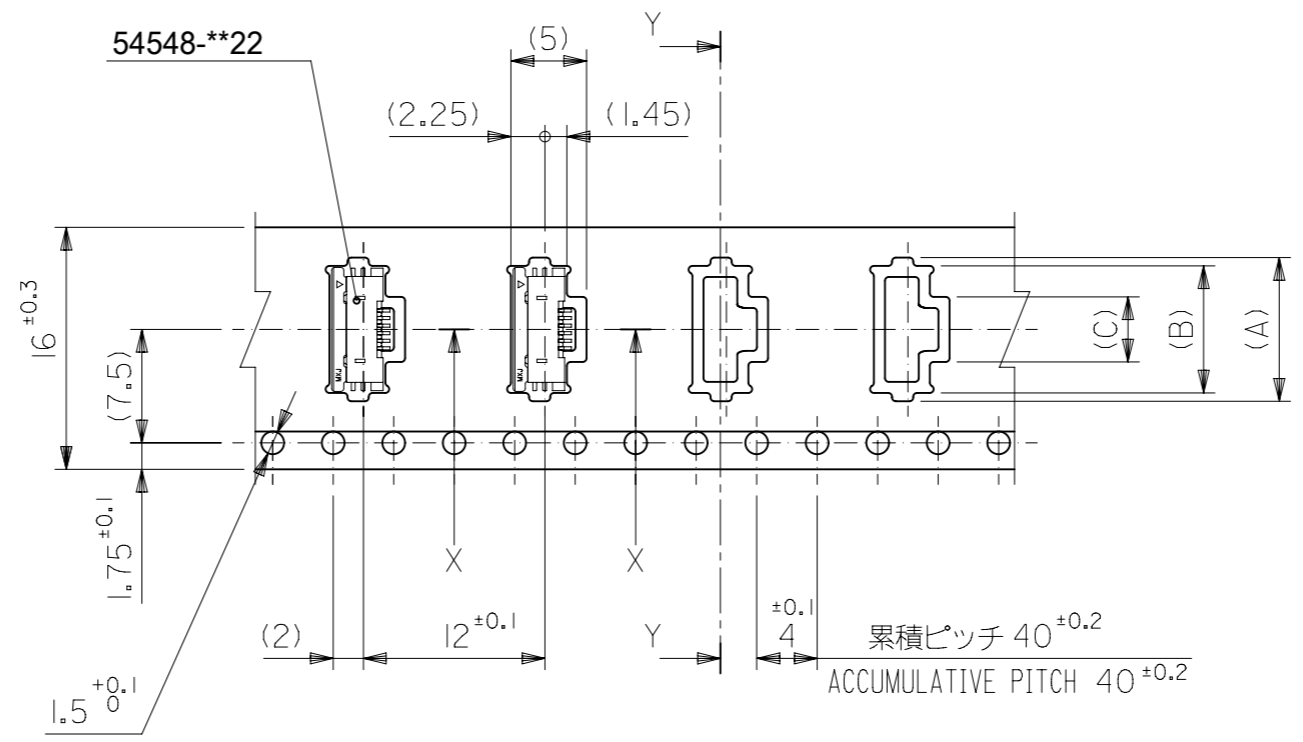
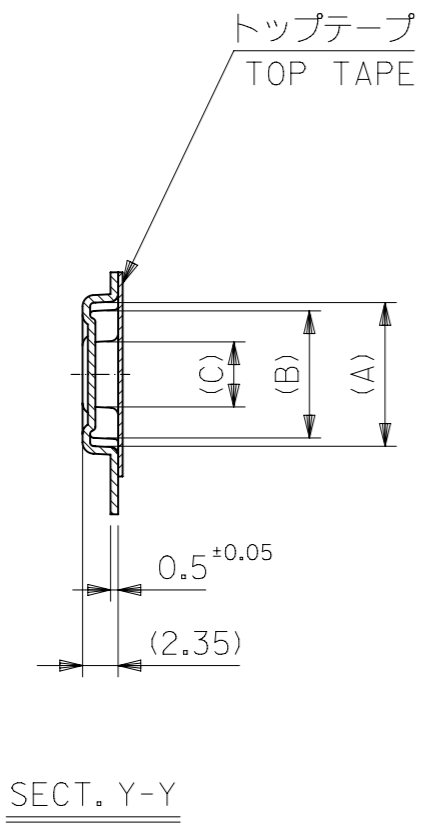
- カバーテープの剥離強度については、IEC60286-3に準拠。  
COVER TAPE PEEL FORCE IS DEFINED BY IEC60286-3.
- 材料(MATERIAL)  
キャリアテープ(CARRIER TAPE)：ポリプロピレン(POLYPROPYLENE)  
トップテープ(TOPTAPE)：PET, PE, PEF  
リール(REEL)：ポリスチレン (PS) <リサイクル材を含む>  
POLYSTYREN(PS) <RECYCLE MATERIAL CONTAINED>
- ELV及びRoHS適合品。  
ELV AND RoHS COMPLIANT.

54548-\*\*33

MODEL NO.

THIS DRAWING CONTAINS INFORMATION THAT IS PROPRIETARY TO MOLEX ELECTRONIC TECHNOLOGIES, LLC AND SHOULD NOT BE USED WITHOUT WRITTEN PERMISSION		CURRENT REV DESC: OBSOLETE PART NUMBER		<b>molex</b>	
GENERAL TOLERANCES (UNLESS SPECIFIED)		EC NO: 636343			
DIMENSION UNITS		SCALE		PRODUCT CUSTOMER DRAWING	
mm		1:1		DOCUMENT NUMBER	
GENERAL TOLERANCES (UNLESS SPECIFIED)		ANGULAR TOL ± 3.0°		SD-54548-044	
4 PLACES ±		DRAFT WHERE APPLICABLE MUST REMAIN WITHIN DIMENSIONS		DOC TYPE	
3 PLACES ±		THIRD ANGLE PROJECTION		PSD	
2 PLACES ±		DRAWING		DOC PART	
1 PLACE ±		A3-SIZE		001	
0 PLACES ±		SERIES		REVISION	
10 <sup>UNDER</sup>		54548		A	
10 <sup>OVER</sup> 30 <sup>UNDER</sup>		MATERIAL NUMBER		SHEET NUMBER	
±0.2		SEE TABLE		1 OF 3	
±0.25		CUSTOMER			
±0.3		GENERAL MARKET			

引き出し方向  
PULL OUT DIRECTION

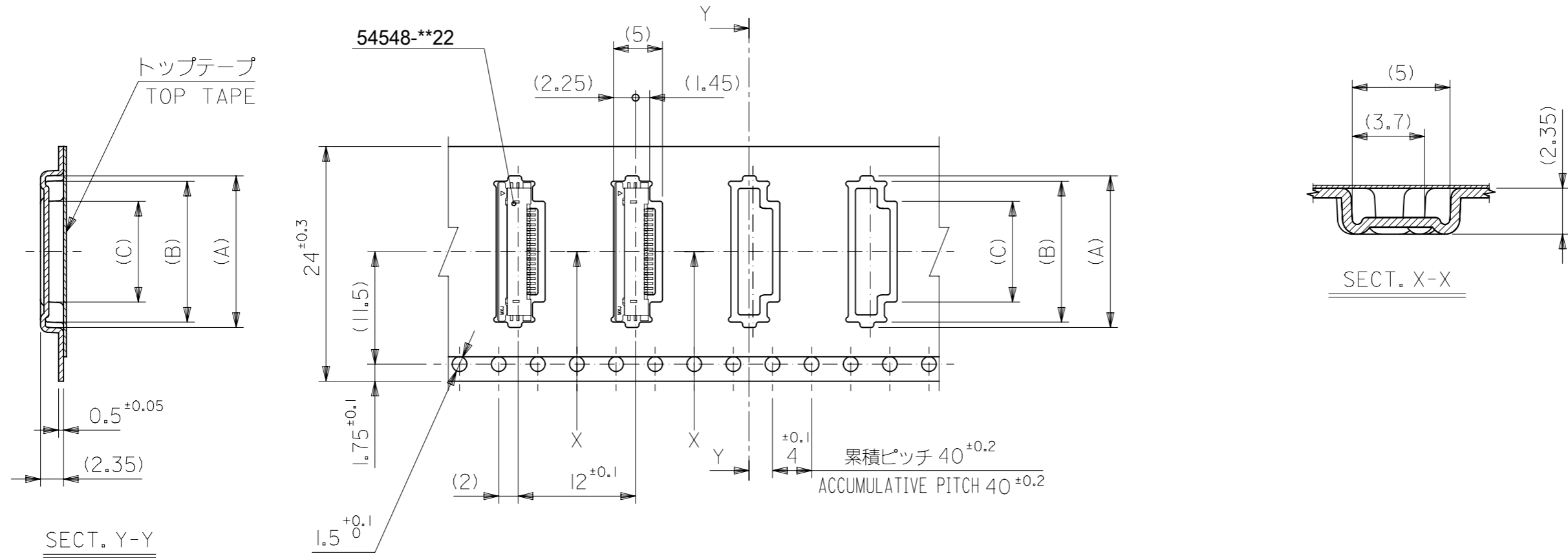


16mm幅キャリアテープ  
16mm WIDTH CARRIER TAPE

16	21.4	17.4	4.3	8.4	9.5	54548-0633	6
			3.8	7.9	9	54548-0533	5
			3.3	7.4	8.5	54548-0433	4
キャリアテープ幅 CARRIER TAPE WIDTH	E	D	(C)	(B)	(A)	製品番号 MATERIAL No.	極数 CIRCUIT
						54548-**33	MODEL NO.

THIS DRAWING CONTAINS INFORMATION THAT IS PROPRIETARY TO MOLEX ELECTRONIC TECHNOLOGIES, LLC AND SHOULD NOT BE USED WITHOUT WRITTEN PERMISSION DIMENSION UNITS: mm SCALE: 2:1 CURRENT REV DESC: OBSOLETE PART NUMBER		<b>molex</b> EMBSTP PKG FOR 0.5 FPC CONN ZIF HSG ASSY	
GENERAL TOLERANCES (UNLESS SPECIFIED) 4 PLACES ± 0.2 3 PLACES ± 0.25 2 PLACES ± 0.3 1 PLACE ± 0.4 0 PLACES ± 0.5 ANGULAR TOL ± 3.0° DRAFT WHERE APPLICABLE MUST REMAIN WITHIN DIMENSIONS			
DOCUMENT NUMBER: SD-54548-044 DOC TYPE: PSD DOC PART: 001 REVISION: A		PRODUCT CUSTOMER DRAWING	
MATERIAL NUMBER: SEE TABLE CUSTOMER: GENERAL MARKET		SHEET NUMBER: 2 OF 3	

引き出し方向  
PULL OUT DIRECTION



24mm幅キャリアテープ  
24mm WIDTH CARRIER TAPE

24	29.4	25.4	11.3	15.4	16.5	54548-2033	20
			8.3	12.4	13.5	54548-1433	14
			7.8	11.9	13	54548-1333	13
			7.3	11.4	12.5	54548-1233	12
			6.3	10.4	11.5	54548-1033	10
			5.3	9.4	10.5	54548-0833	8
			4.8	8.9	10	54548-0733	7
キャリアテープ幅 CARRIER TAPE WIDTH	E	D	(C)	(B)	(A)	製品番号 MATERIAL No.	極数 CIRCUIT

54548-\*\*33 MODEL NO.

THIS DRAWING CONTAINS INFORMATION THAT IS PROPRIETARY TO MOLEX ELECTRONIC TECHNOLOGIES, LLC AND SHOULD NOT BE USED WITHOUT WRITTEN PERMISSION

SCALE: 2:1

GENERAL TOLERANCES (UNLESS SPECIFIED)

DIMENSION UNITS	SCALE
mm	2:1
GENERAL TOLERANCES (UNLESS SPECIFIED)	
	MM INCH
4 PLACES	±
3 PLACES	±
2 PLACES	±
1 PLACE	±
0 PLACES	±

ANGULAR TOL ± 3.0°

DRAFT WHERE APPLICABLE MUST REMAIN WITHIN DIMENSIONS

THIRD ANGLE PROJECTION

EC NO: 636343  
DRWN: AKUMAR19  
CHK'D: GGA  
APPR: GGA

INITIAL REVISION:  
DRWN: JASANUMA  
APPR: YNOGAWA

2020/04/15  
2020/07/10  
2020/07/10

2013/12/04  
2014/01/10

DOCUMENT NUMBER: SD-54548-044  
DOC TYPE: PSD  
DOC PART: 001  
REVISION: A

PRODUCT CUSTOMER DRAWING

MATERIAL NUMBER: SEE TABLE  
CUSTOMER: GENERAL MARKET  
SHEET NUMBER: 3 OF 3

GENERAL TOLERANCES (UNLESS SPECIFIED)

10 <sup>UNDER</sup>	±0.2
10 <sup>OVER</sup> 30 <sup>UNDER</sup>	±0.25
30 <sup>OVER</sup>	±0.3