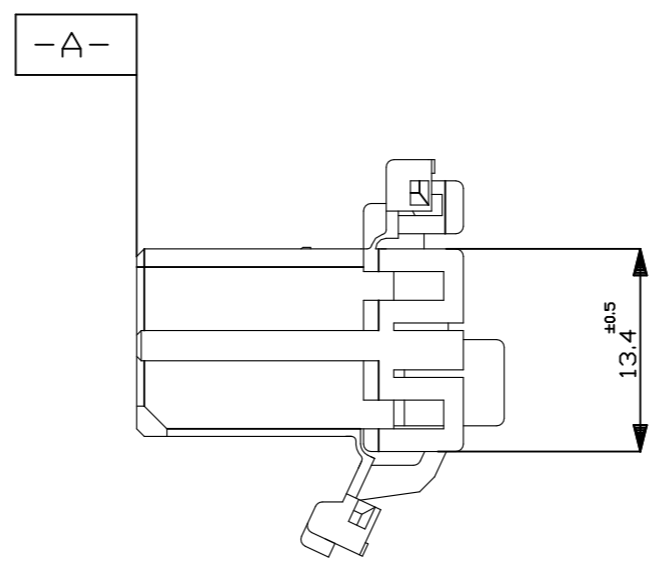
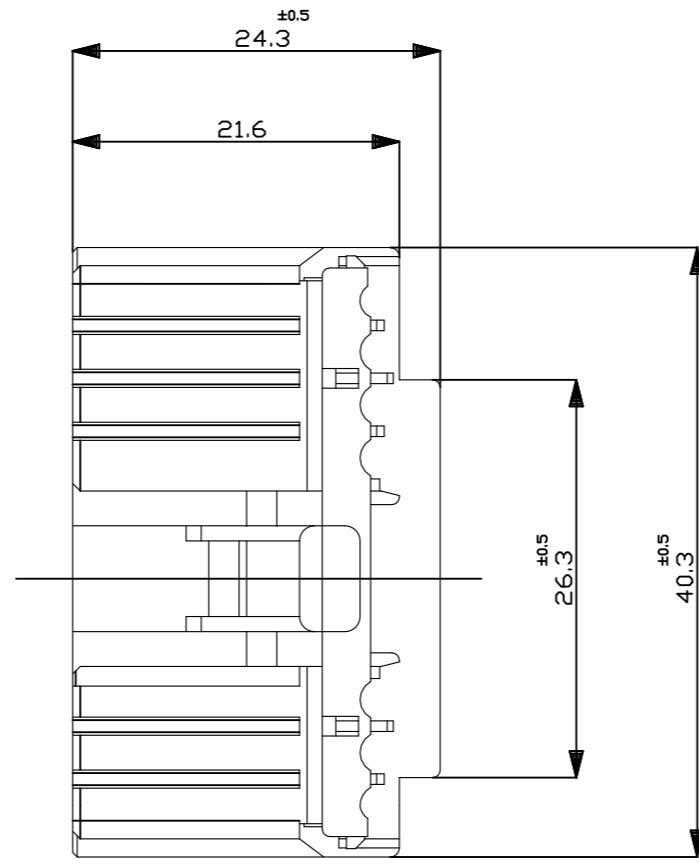
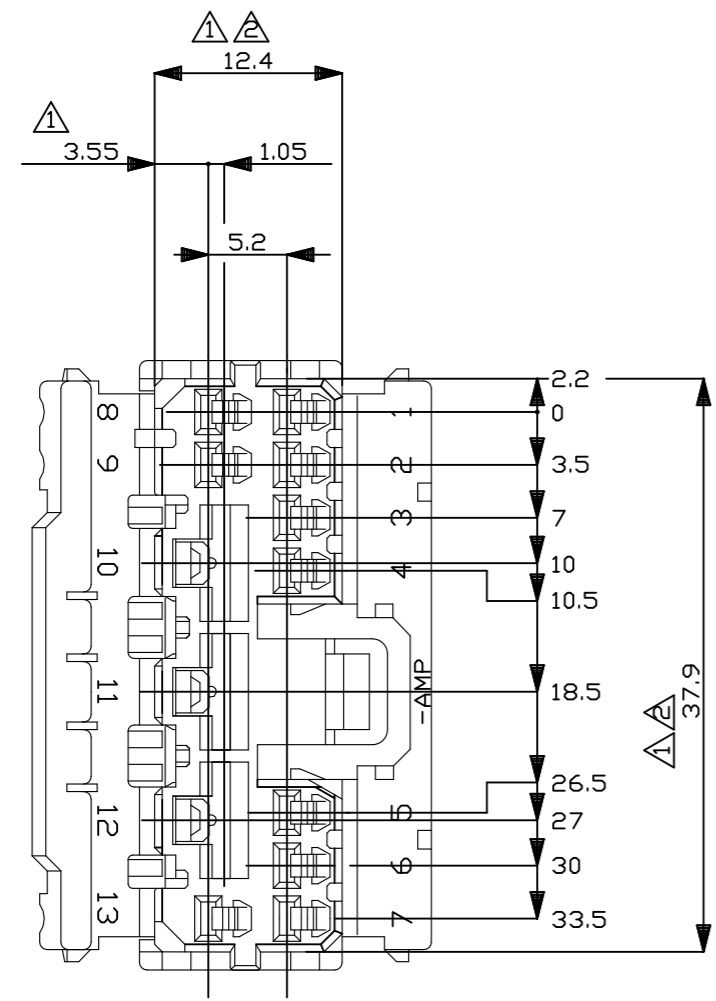


| P | LTR | DESCRIPTION | DATE | DWN | APVD |
|---|-----|---------------------------|-----------|-----|------|
| | B1 | REVISED PER ECR-23-165252 | 31JAN2023 | RK | MT |



注；

- ⚠ -A- 面より2mmの範囲で測定
- ⚠ 相手ハウジングと所定の機能を満足して嵌合できること
- 3 内装するリセプタクルコンタクトは、
.070シリーズ 型番 173630 及び 173631
.250シリーズ 型番 170032, 170258 及び 170384

NOTE；

- ⚠ TO BE MEASURED BETWEEN -A- AND 2
- ⚠ TO BE MATE WITH CAP HOUSING SMOOTHLY
- 3 APPLIED RECEPTACLE CONTACT PART NUMBERS
.070SERIES: 173630, 173631
.250SERIES: 170032, 170258, 170384

| 色 (COLOR) | 名称 (NAME) | 型番 (PART NUMBER) |
|-----------|-------------------------------------|------------------|
| 青 (BLUE) | 13極 プラグ ハウジング (13Pos. PLUG HOUSING) | 174926-5 |
| 緑 (GREEN) | 13極 プラグ ハウジング (13Pos. PLUG HOUSING) | 174926-4 |
| 白 (WHITE) | 13極 プラグ ハウジング (13Pos. PLUG HOUSING) | 174926-1 |

OBSOLETE

THIS DRAWING IS A CONTROLLED DOCUMENT.

| DIMENSIONS: | TOLERANCES UNLESS OTHERWISE SPECIFIED: |
|-------------|--|
| mm | |
| | 0 PLC ± - |
| | 1 PLC ± - |
| | 2 PLC ± - |
| | 3 PLC ± - |
| | 4 PLC ± - |
| | ANGLES ± - |
| | FINISH ± - |

一般公差 (GENERAL TOLERANCES)

| | |
|--------------|-------|
| 0 < * ≤ 10 | ±0.2 |
| 10 < * ≤ 30 | ±0.25 |
| 30 < * ≤ 100 | ±0.3 |
| ANGLES | ±3° |

MATERIAL PBT

| | | |
|------------------|---|-----------------|
| DWN | Y. KAKITANI | 31JAN2023 |
| CHK | A.MATSUSAKA | 3/9/'88 |
| APVD | A.MATSUSAKA | 3/9/'88 |
| PRODUCT SPEC | NAME .070/.250 HYBRID CONNECTOR 13Pos. PLUG HOUSING | |
| APPLICATION SPEC | - | |
| WEIGHT | - | - |
| SIZE | A3 | CAGE CODE 00779 |
| DRAWING NO | G=174926 | |
| RESTRICTED TO | - | |
| CUSTOMER DRAWING | SCALE 2:1 | SHEET 1 OF 1 |
| | | REV B1 |