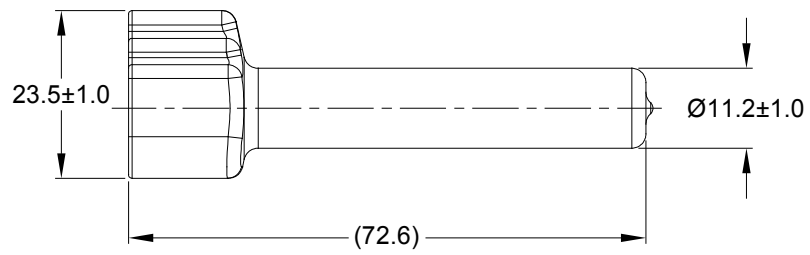
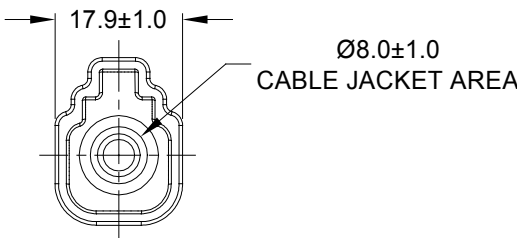
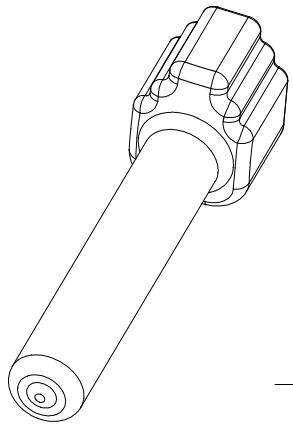


REVISIONS					
REV	ECO	DESCRIPTION	DATE	BY	APPR
A1	-	RELEASE NUMBER	13MAR20	BROOK	TOMMY



PART NUMBER CHART	
COLOR	PART NUMBER
GREY	ATM4S-BT
BLACK	ATM4S-BT-BK
YELLOW	ATM4S-BT-YW

SEE PART NUMBER CHART	REF: DTM4S-BT , DTM4S-BT-BK, DTM4S-BT-YW	
PART NUMBER	DESCRIPTION	ITEM

QUANTITY MATERIALS LIST

<p>UNLESS OTHERWISE SPECIFIED</p> <p>1) All dimensions are in metric(mm).</p> <p>2) Tolerances are as follows:</p> <p>1 PL DEC ±0.30 Fractions ±1/64</p> <p>2 PL DEC ±0.15 Angles ±1°</p> <p>3 PL DEC ±0.08</p> <p>3) Note reference = </p>	<p>SIGNATURES</p> <p>DRAWN: BROOK.DING</p>	<p>DATE</p> <p>13MAR20</p>	<p style="text-align: center;">Amphenol</p> <p>Sine Systems - www.amphenol-sine.com 44724 Morley Drive Clinton Township, MI 48036</p>		
	<p>CHECKED: ORION.LI</p>	<p>16MAR20</p>			
	<p>ENGINEER:</p>				
	<p>APPROVAL: TOMMY.XIE</p>	<p>17MAR20</p>			
<p>MATERIAL SPECIFICATIONS:</p> <p style="text-align: center;">PVC</p>	<p>CUSTOMER:</p>		<p style="text-align: center;">BOOT , ATM , 4 WAY , PLUG</p>		
<p>PROCESS SPECIFICATIONS:</p>	<p>THIS DRAWING IS SUPPLIED FOR INFORMATION ONLY. DESIGN FEATURES, SPECIFICATIONS AND PERFORMANCE DATA SHOWN HEREON ARE THE PROPERTY OF THE AMPHENOL CORPORATION. NO RIGHTS OF REPRODUCTION ARE IMPLIED. ALL DIMENSIONS ARE SUBJECT TO NORMAL MANUFACTURING VARIATIONS.</p>	<p>SIZE</p> <p style="font-size: 2em;">A</p>	<p>TYPE</p> <p style="font-size: 2em;">C-</p>	<p>DWG NO:</p> <p style="font-size: 2em;">ATM4S-BT-XX</p>	<p>REVISION</p> <p style="font-size: 2em;">A1</p>
<p>NEXT ASSY:</p>	<p>SCALE: NONE</p>		<p>SHEET 1 OF 1</p>		

- NOTES: UNLESS OTHERWISE SPECIFIED
- THIS PART IS USED ON ATM06-4S PLUG WITH ANY MODIFICATION THAT DOES NOT INCLUDE AN END CAP.
 - TEMPERATURE RATING : -29°C TO +100°C [-20°F TO +212°F]
 - ALL DIMENSIONS ARE FOR REFERENCE USE ONLY.