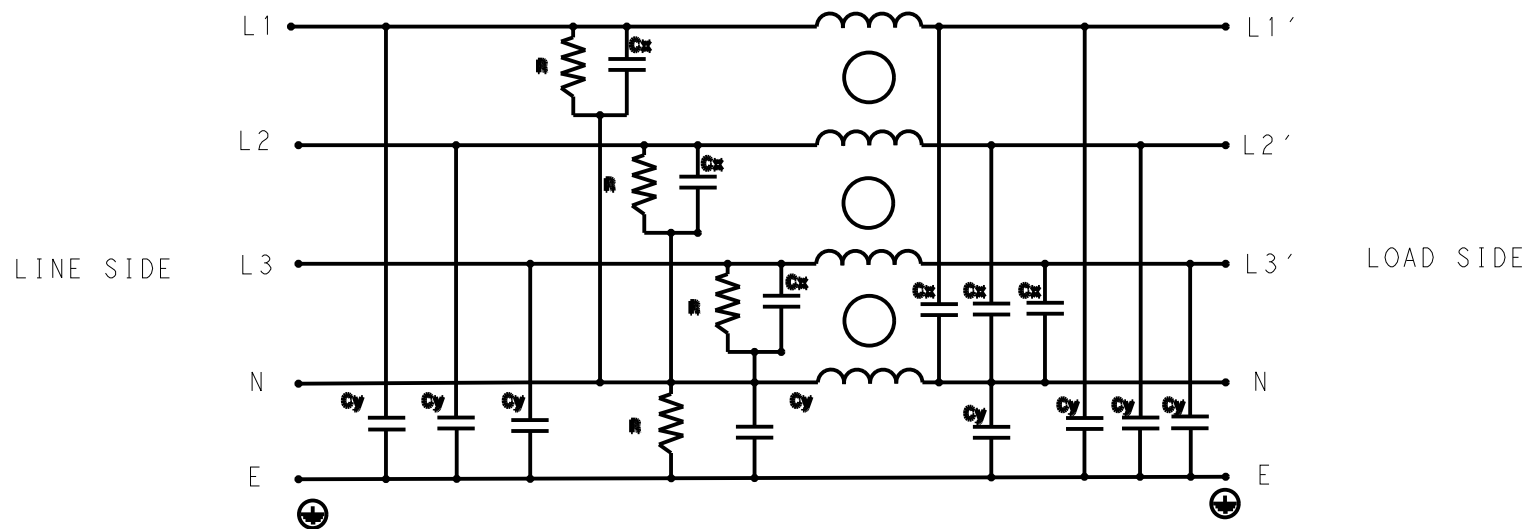


REVISIONS

| P | LTR | DESCRIPTION     | DATE      | DWN | APVD |
|---|-----|-----------------|-----------|-----|------|
|   | A   | INITIAL RELEASE | 12APR2021 | BS  | CB   |



SCHEMATIC

SAFETY ORGANIZATIONS

THIS FILTER WILL BE FORMALLY RECOGNIZED, CERTIFIED OR APPROVED BY THE LISTED AGENCY. THEREFORE, ALL TEST/REQUIREMENTS SPECIFIED IN THE LATEST REVISION OF THE FOLLOWING AGENCY STANDARDS WILL BE MET:

UL APPROVED 6A 520V 50Hz/60Hz 40°C  
 CSA PENDING 6A 520V 50Hz/60Hz 40°C

OPERATING SPECIFICATION

LINE CURRENT/VOLTAGE: 6A, 520VAC  
LINE FREQUENCY: 50/60Hz

MAXIMUM LEAKAGE CURRENT: 8.5mA @ 230VAC, 50Hz

OPERATING AMBIENT TEMPERATURE RANGE @ RATED CURRENT: -25°C TO +40°C

IN AN AMBIENT, T<sub>a</sub>, HIGHER THAN 40°C, THE MAXIMUM OPERATING CURRENT, I<sub>o</sub>, IS AS FOLLOWS:

$$I_o = I_r \sqrt{\frac{85 - T_a}{45}}$$

RELIABILITY SPECIFICATIONS

STORAGE TEMPERATURE: -40°C TO +85°C  
HUMIDITY: 21 DAYS @ 40°C AND 95% RH

TEST SPECIFICATIONS

INDUCTANCE, NOMINAL: 9.5mH

CAPACITANCE @ 1kHz

LINE TO GROUND, NOMINAL: 1.1µF  
NEUTRAL TO GROUND, NOMINAL: 2.2µF  
LINE TO NEUTRAL, NOMINAL: 2µF

DISCHARGE RESISTOR

L/L I.R. 2MΩ 1W  
 L/N I.R. 1MΩ 1W  
 L/G I.R. 2MΩ 1W  
 N/G I.R. 1MΩ 1W  
 IR (NO DISCHARGE RESISTOR) 20°C, 50% RH AND 100VDC, MIN: 6MΩ

RECOMMENDED RECEIVING INSPECITON HIPOT

LINE TO GROUND FOR 1 MINUTE: 2856VDC  
LINE TO LINE FOR 1 MINUTE: 2236VDC  
LINE TO NEUTRAL FOR 1 MINUTE: 1290VDC

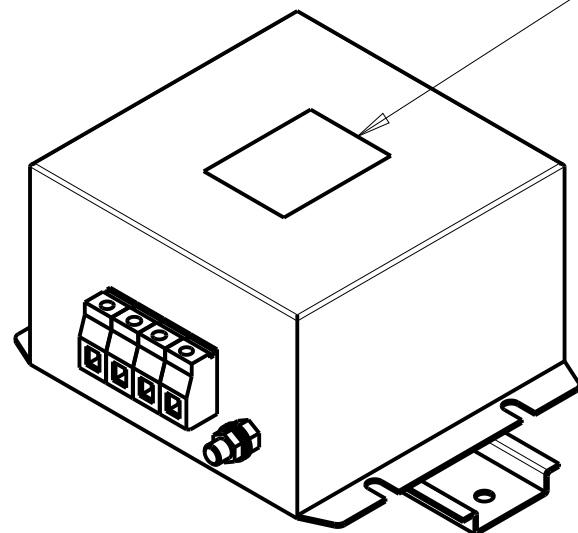
FILTER APPROVAL

THE BEST WAY TO SELECT AND QUALIFY A FILTER IS FOR YOUR ENGINEERING TO TEST THE UNIT IN YOUR EQUIPMENT.

TYPICAL INSERTION LOSS  
COMMON MODE 50/50Ω; DIFFERENTIAL MODE 50/50Ω

| MHz | 0.01 | 0.05 | 0.15 | 0.5 | 1  | 3  | 5  | 10 | 30 |
|-----|------|------|------|-----|----|----|----|----|----|
| CM  | 61   | 60   | 60   | 55  | 49 | 40 | 38 | 34 | 26 |
| DM  | 56   | 52   | 54   | 50  | 47 | 35 | 30 | 40 | 32 |

LABEL TO TE MARKING SPECIFICATION



|  |  |                               |  |                         |
|--|--|-------------------------------|--|-------------------------|
| THIS DRAWING IS A CONTROLLED DOCUMENT.   |  | DWN 12APR2021<br>BAPAT SAHAS  |  |                         |
| DIMENSIONS: mm   |  | CHK 12APR2021<br>CHRIS BOLLE  |  |                         |
| TOLERANCES UNLESS OTHERWISE SPECIFIED:   |  | APVD 12APR2021<br>CHRIS BOLLE | NAME<br>POWER LINE FILTER FOR<br>DIN 35 RAIL INSTALLATION<br>6KEPS10BFPWVM |                         |
| 0 PLC ±.5<br>1 PLC ±0.5<br>2 PLC ±0.40<br>3 PLC ±0.130<br>4 PLC ±0.0500<br>ANGLES ±. |  | PRODUCT SPEC                  | RESTRICTED TO  |                         |
| MATERIAL   |  | APPLICATION SPEC              | SIZE A300779   | CAGE CODE C-7-1609969-7 |
| FINISH   |  | WEIGHT                        | SCALE 1:2 SHEET 1 OF 2 REV A   |                         |
|  |  | CUSTOMER DRAWING              |  |                         |

© 2021 TE Connectivity. All Rights Reserved.

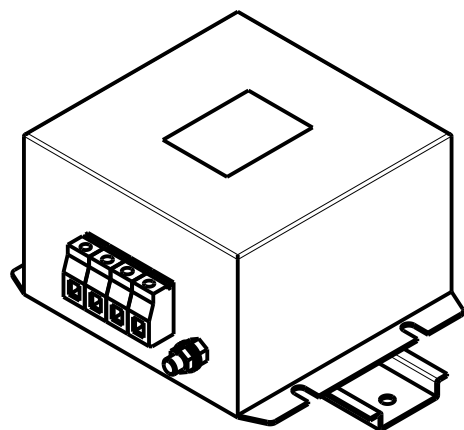
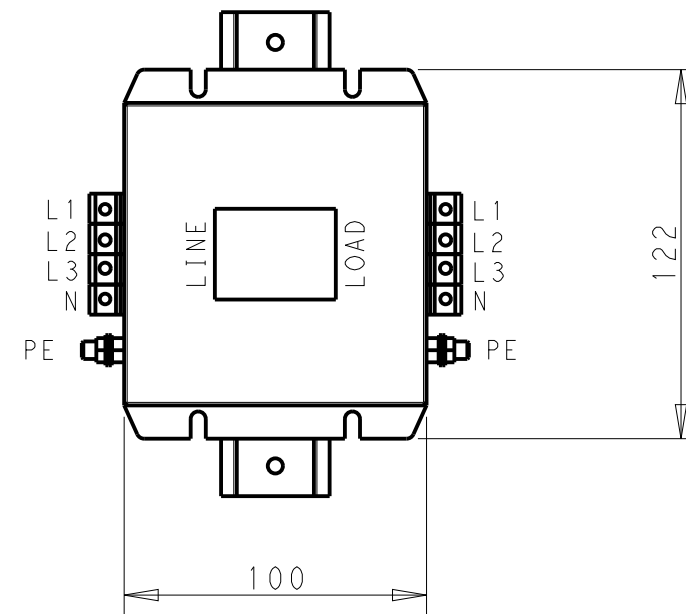
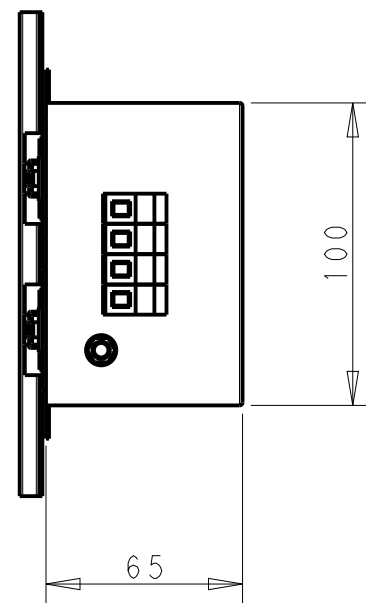
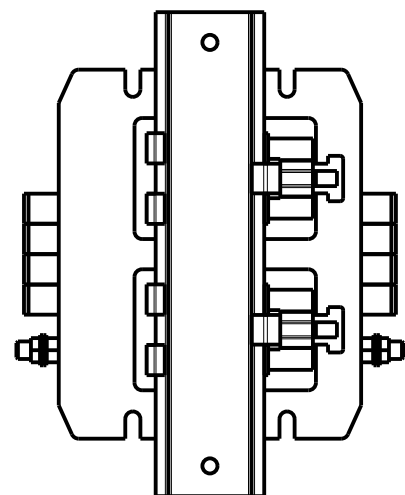
NOTE 1 GROUND CONNECTION:  
 FOR ELECTRICAL SAFETY AND FILTER PERFORMANCE  
 UNIT MUST HAVE A GOOD GROUND CONNECTION.  
 TORQUE OUTER TERMINAL SCREWS: 0.5Nm / 4.5 in.lbs  
 TORQUE GROUND NUTS: 2.5-3Nm

NOTE 2 INPUT OUTPUT CONNECTION TERMINAL  
 AWG SIZE: 26-12 AWG  
 WIRE SECTION: 4 mm<sup>2</sup>  
 THREADED BOLT SIZE FOR GROUND: M6

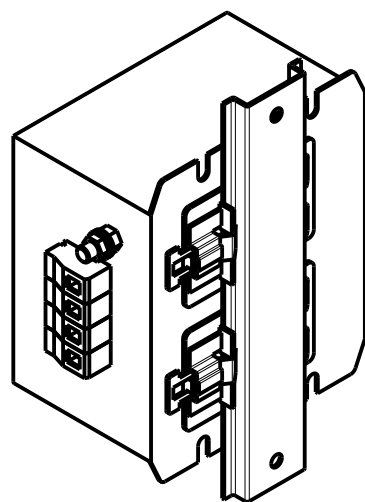
NOTE 3 SUPPLIED WITH DIN RAIL BRACKET

NOTE 4 DRAWINGS SHOWS DIN RAIL FOR REFERENCE ONLY

| REVISIONS |     |             |      |     |      |
|-----------|-----|-------------|------|-----|------|
| P         | LTR | DESCRIPTION | DATE | DWN | APVD |
|           |     | SEE SHEET 1 |      |     |      |
|           |     |             |      |     |      |
|           |     |             |      |     |      |



FRONT SIDE



REAR SIDE



DIN RAIL CHANNEL      DIN 35 BRACKET

|  |         |                  |                          |                           |
|--|---------|------------------|--------------------------|---------------------------|
| THIS DRAWING IS A CONTROLLED DOCUMENT. |         | DWN              | 12APR2021                | <b>TE</b> TE Connectivity |
|  |         | CHK              | 12APR2021                |                           |
|  |         | APVD             | 12APR2021                |                           |
|  |         | NAME             | CHRIS BOLLE              |                           |
| DIMENSIONS:                            |         | PRODUCT SPEC     | POWER LINE FILTER FOR    |                           |
| mm                                     |         | APPLICATION SPEC | DIN 35 RAIL INSTALLATION |                           |
|  |         | WEIGHT           | 6KEPS10BFPWVM            |                           |
| TOLERANCES UNLESS OTHERWISE SPECIFIED: |         | SIZE             |                          | RESTRICTED TO             |
| 0 PLC                                  | ±-      | A300779          |                          | -                         |
| 1 PLC                                  | ±0.5    | CAGE CODE        |                          |                           |
| 2 PLC                                  | ±0.40   | DRAWING NO       |                          |                           |
| 3 PLC                                  | ±0.130  | G-7-1609969-7    |                          |                           |
| 4 PLC                                  | ±0.0500 | SCALE            |                          | 2:5                       |
| ANGLES                                 | ±-      | SHEET            |                          | 2 OF 2                    |
| MATERIAL                               | FINISH  | REV              |                          | A                         |
| -                                      | -       | CUSTOMER DRAWING |                          |                           |